



**SCOTTISH CORRESPONDENCE CHESS ASSOCIATION**  
Office-Bearers 1992-93

President (Magazine Editor) (ICCF Delegate)	Alan P. Borwell 8 Wheatfield Avenue, Inchtute, Perthshire PH14 9RX	Tel No 0828-86556 Fax 0828-86004
Vice President	Philip Giuliani 10 Broomfield Ave, Newton Mearns, Glasgow G77 5HR	041-639-1234
Secretary	Alan Hind 6 Gordon Drive, Netherlee, Glasgow G44 3TF	041-637-4462
Treasurer	Iain S. Campbell, 32 Lomond Drive, Newton Mearns, Glasgow G77 6LR	041-639-3753
Assistant Secretary	Douglas M. Livie, 17 Whittliemuir Avenue, Muirend, Glasgow G44 3HU	041-637-1936
International Secy (& Games Editor)	George D. Pyrich, 53 Dunnikier Road, Kirkcaldy, Fife, KY1 2RL	0592-204133
Asst International Secretary	Colin A. Macgregor, Top Flat Left, 9 Argyle Street, Paisley PA1 2ET	041-887-6619
Grading Officer	Michael T. Dyer, 130 Millhouse Drive, Glasgow G20 0UF	041-946-5915
Asst Magazine Editor	Ian W.S. Mitchell, 54 Strathtay Road, Letham, Perth, PH1 2LZ	0738-38257
Publicity and Membership Officer	C. Richard Beecham, 28 Morris Road, Prestwick, Ayrshire, KA9 2JW.	0292-76984

**Index of Contents**

	Pages		Pages
Secretarial Notes/AGM Notice	1	Bits 'n' Pieces	61/65
Editorial	2	ICCF Congress 1992	66/67
Scottish CCA Magazine Tourney	3	ICCF Tournaments	68/69
SCCA Tournaments 1992	4/9	International Report	70
Championship/Candidates 1993	10	International Events	71/73
SCCA League 1992	11/12	Ladies Olympiad	74/75
SCCA Open Tourneys	12/13	New Olympiad Final/Prelims	76/77
Classic Games of Corres Chess	14/16	Olympiad XI Tables	78/79
100 Club	16	European TT Tables	80/83
Theory Corner	17/20	3rd NATT Tables	84/87
Candidates Tournament 1990/2	21/31	Winning Continuations	88/89
Book Reviews	32/36	Readers Letters	90/91
Games Section	37/60	Notices &c	92

**SCOTTISH C.C.A. MAGAZINE No. 42**

March 1993

**SECRETARIAL NOTES**

by Alan Hind

Another season underway. All results are finalised, new pairings made and cheques and medals despatched. Hopefully I can now get a little bit of respite before the AGM (see separate notice).

This is the first season with "new look" Premier and a new tournament - the Minor. We also have 2 Candidates sections. The new Rules Brochure has been issued and each member should have a copy (please advise me if not yet received).

Welcome to all those new to correspondence chess - I wish you every success and much enjoyment in 1993.

**RULES BROCHURE CLARIFICATIONS**

Since the issue of the Rules Brochure, the following two points have been raised:  
**General Principles of Play § 3**

Time controls for Premier, Major, Minor, Openings and League are now 20 days for first 10 moves and 10 days for each subsequent 5 moves. This is an attempt to get games completed within the 9/10 month time allocation. However, I would value comments once we have had a chance to see the effects this season.

**Playing Rules § 17 &c**

It is taken as implicit that, where 2 games are being played simultaneously against one opponent and play ceases in one of the games, the second game will continue without interruption.

**NOTICE OF ANNUAL GENERAL MEETING**

The Annual General Meeting of the Scottish CCA will be held at 4.00 p.m. on Sunday 6th June 1993 at Rhuallan House, Giffnock. The Agenda will be:

- |                            |                               |
|----------------------------|-------------------------------|
| 1. President's Remarks     | 6. Election of Office Bearers |
| 2. Minutes of previous AGM | 7. Election of Auditor        |
| 3. Secretary's Report      | 8. Subscriptions              |
| 4. Treasurer's Report      | 9. Any other business         |

If any member wishes to raise any item of business, notification should be in the hands of the Secretary by 31st May 1993 at the latest

# EDITORIAL

by Alan Borwell

March 1993

This edition sees the beginning of the switch from using an Amstrad word processor and dot matrix printer to a more sophisticated PC and laser printer. Chess pieces have been used for figurine notation for most games, although Ian Marks has expressed a strong preference for the retention of the more traditional lettering. (Readers' views would be appreciated!)

Maira is still learning and experimenting with the many options from the systems we now have available. However, we hope readers will appreciate the new format and presentation. Regrettably, we have had to defer the first "supplement" of the Scottish Centenary Tournament until we have converted the Magazine fully into the new format as it would be better for the supplements to be consistent.

On the playing front, Scotland has begun play in the Final of the CC Olympiad XI and in the Preliminaries of CC Olympiad XII - we wish our teams great success. Both Philip Giulian and David Kilgour were awarded their IMs at the ICCF Congress in Austria (see report) and David has qualified for the World CC 1/4 Final - a superb achievement! (See International Pages)

In domestic competitions, Paul McGowan is the new Scottish Champion and Knights of the Square Table and Streatham & Brixton tied for the Scottish League Championship. Congratulations also to Mr. W.D. Taylor (Desmond) on winning the Final of the 1st Scottish Open Tournament, with Nick Down a close runner-up (also undefeated!)

The Scottish CCA Magazine International Tournaments are nearing completion, with results also coming in steadily for the Ladies Section. Congratulations to Ferenc Fabri (HUN) 10 1/2/12 on winning Section A with Manfred Bauer (GER) 9/13 and J. Hartung Nielsen (DEN) 8 1/2/13 the other main prizewinners. Scotland's David Kilgour 8/14 and Philip Giulian 7 1/2/14 scored well and I need 1/2-point from my remaining game for an IM title. In Section B, A. Ros (NLD) and S. Teichmeister (AUS) tied for first place with 10/14 and our own George Pyrich scored an excellent 8 1/2/14, just one point short of the IM title norm (see page 3)

We would welcome more articles, games, letters etc from our readers (home and abroad) and would be pleased to include them in our Magazine. Although we are a little late again with this edition, we hope it will provide interesting reading. The next issues are planned for July and November 1993.

## SCOTTISH CCA MAGAZINE INVITATION TOURNAMENT

SECTION A	IM = 7 p		1	2	3	4	5	6	7	8	9	10	11	12	13	14	15	
1 D JENKINS	(SCO)	2385	0	1/2	0	0	0	0	1	0	0	1/2	0	0	-	1/2	0	
2 T de RUITER	(NLD)	2505	1/2	0	1/2	1	0	0	1	0	0	1/2	1	1/2	-	0	1/2	5 1/2
3 J HARTUNG-NIELSEN	(DEN)	2495	1	1/2	0	0	1/2	1	1/2	1	1/2	1/2	1/2	-	1/2	1		IM 8 1/2
4 O REBBERG	(NOR)	2425	1	0	0	0	1	0	0	0	0	0	1/2	1/2	-	0	0	3
5 A PRYSTENSKI	(CAN)	2405	0	1	1	0	0	1	1	1	1/2	0	0	-	1	1		
6 P FABRI	IM (HUN)	2515	0	1/2	1	1	1	1	1	1	1/2	1	1	1	-	1/2	1	
7 B CALLAGHAN Jar	(USA)	2500	1	0	0	1	0	0	1/2	1/2	1/2	1/2	0	-	1/2			
8 J KRISTINSSON	(ICE)	2430	0	1	1/2	1	0	0	1/2	0	1/2	0	0	1	-	1/2	1/2	
9 C CHANDLER	(ENG)	2445	1	1	0	1	1/2	1/2	1/2	1/2	1/2	0	0	-	1/2	1		7
10 P GIULIAN	(SCO)	2395	1/2	1/2	1/2	1	1	0	1/2	1	1/2	1/2	0	-	1/2	1		IM 7 1/2
11 D KILGOUR	(SCO)	2410	1	0	1/2	1/2	1	0	1/2	1	1/2	1	0	-	1	1		IM 8
12 M BAUER	(BRD)	2415	1	1/2	1/2	1/2	1	0	1	0	1	1	1	-	1/2	1		IM 9
13 G den BROEDER	(NLD)	2440	-	-	-	-	-	-	-	-	-	-	-	-	-	-		w/b -
14 A BORWELL	(SCO)	2295	1/2	1	1/2	1	0	1/2	1/2	1/2	1/2	0	1/2	-	1			
15 R VIKMAN	IM (FIN)	2365	1	1/2	0	1	0	0	1/2	1/2	0	0	0	-	0			3 1/2

SECTION B	IM = 9 1/2 p		1	2	3	4	5	6	7	8	9	10	11	12	13	14	15	
1 G PYRICH	(SCO)	2225	1	1	1/2	1/2	1/2	1/2	1/2	1	1	1	1/2	1/2	1	0		8 1/2
2 O RICKERS	(BRD)	2375	1/2	0	1/2	1	1/2	1	1/2	1	1/2	1	1/2	1/2	1/2	1/2		
3 Dr J VANDORFFY	(HUN)	2415	1/2	1/2	0	1/2	1/2	0	1/2	1/2	1	1/2	0	1/2	1/2			7 1/2
4 T GRINBERG	(USA)	2375	1/2	0	1/2	1/2	1/2	1/2	1/2	1/2	1/2	1/2	1	0	1/2	1		
5 Dr V KARLSSON	(ICE)	2375	1/2	1/2	1/2	1/2	0	0	1	1/2	1	1/2	1	1/2	0	1/2		
6 A ROS	(DEN)	2395	1/2	0	1	1/2	1	0	1/2	1/2	1	1/2	1	1/2	1	1		10 IM
7 A ROSKO KOIVISTO	(FIN)	2385	1/2	0	1	1/2	1	1/2	1/2	1	1	1/2	1/2	0	1/2			7
8 B MARTIN	(SCO)	2320	1/2	1/2	1/2	1/2	0	1/2	1/2	1/2	1	0	1/2	1	1/2			5 1/2
9 T CRAIG	(SCO)	2290	0	0	1/2	1/2	1/2	0	0	1/2	0	1	0	1/2	1/2	1/2		5
10 L PATTERSON	(CAN)	2290	0	1/2	0	1/2	0	1/2	0	1/2	0	1	1/2	1/2	1/2	0	1/2	4 1/2
11 I CAMPBELL	(SCO)	2310	0	0	1/2	0	1/2	0	1/2	0	1	1/2	1/2	1/2	0	1/2		10 IM
12 B TEICHMEISTER	(OST)	2395	1/2	1/2	1	1	1	1/2	1/2	1	1/2	1	1/2	1/2	1/2	1/2		
13 B BECHMAN	(SCO)	2280	1/2	1/2	1/2	1/2	0	1	1/2	1/2	1/2	1/2	1/2	1/2	1/2	1/2		
14 K KOISTINEN	(FIN)	2360	0	1/2	1/2	0	1	0	1/2	0	1/2	0	1	1/2	1/2	1/2		5 1/2
15 P VAGO	(AUS) (2200)		1	1/2	1/2	0	1/2	0	1/2	0	0	1/2	0	1/2	1/2			

LADIES SECTION	IM = 8 p		1	2	3	4	5	6	7	8	9	10	11	12	13	14	15	
1 M LJUBIČIĆ	(CRO)	(2175)	0	-	1	1/2										0		
2 R GIULIAN	(SCO)	(2050)	0	-														1/2
3 S DJURIC	(YUG)	2175	-	-	-	-	-	-	-	-	-	-	-	-	-	-	-	
4 B CSON-HEMETHNER	(HUN)	2115	0	-													0	
5 B HARTFORD	(SCO)	1900	1/2	-														
6 E CYNOLTER BOGMARNE	(HUN)	2005	-	-														
7 D COOPER	(VAL)	2250	-	-														0
8 M HORVATH	(HUN)	(1900)	-	-														
9 A SCHOL-GRIN	(NLD)	1910	-	-														
10 C HERRI	(AUS)	(1900)	-	-														
11 B D KRASIKOVA	(SU)	2100	-	-														
12 B MOZBA-NOJDAROVA	(CZR)	2340	-	-														1
13 R I NEVEDNITSCHAJA	(SU)	2320	-	-														
14 DR T HARGITAY	(HUN)	1900	1	-	1											0		
15 DR C ROSENFIELD	(USA)	2200	-	-														

**CHAMPIONSHIP 90-92**

Controller: A Maxwell

No.	1	2	3	4	5	6	7	Pts
1 G D PYRICH	*	0	1	1/2	1	1/2	1/2	3 1/2
2 J A B STEVENSON	1	*	1/2	1/2	1	1/2	1/2	4
3 C F BOYLE	0	1/2	*	0	0	0	0	1/2
4 A T HISLOP	1/2	1/2	1	*	1	0	1	4
5 M T DYER	0	0	1	0	*	1/2	0	1 1/2
6 P McGOVAN	1/2	1/2	1	1	1/2	*	1	4 1/2
7 G WALLWORK	1/2	1/2	1	0	1	0	*	3

**CANDIDATES 90-92**

Controller: C R Beechan

No.	1	2	3	4	5	6	7	8	9	Pts
1 T THOMSON	*	1	1/2	1	0	1/2	1/2	1	1	5 1/2
2 G BIRD	0	*	1	1	0	1/2	1/2	1	1	5
3 A V I CAMPBELL	1/2	0	*	1	1	0	0	0	0	2 1/2
4 V M COOK	0	0	0	*	1	1	0	1	1	4
5 D HARVEY	1	1	0	0	*	0	0	1	1/2	3 1/2
6 D HOLMES	1/2	1/2	1	0	1	*	1/2	1	1	5 1/2
7 W HULME	1/2	1/2	1	1	1	1/2	*	1/2	1/2	5 1/2
8 A MAXWELL	0	0	1	0	0	0	1/2	*	0	1 1/2
9 C C McKAY	0	0	1	0	1/2	0	1/2	1	*	3

**CHAMPIONSHIP 91-93**

Controller: A Maxwell

No.	1	2	3	4	5	6	7	8	9	Pts
1 T J CRAIG	●	1	0		1	1		1/2	1	
2 A T HISLOP	0	●		1/2	0	1		1		
3 N DOWN	1		●		1	1	1		1	
4 J STEVENSON		1/2		●	1/2	1/2		1/2		
5 G D PYRICH	0	1	0	1/2	●	1/2	1	1/2	1/2	4
6 I S CAMPBELL	0	0	0	1/2	1/2	●	1	0	1/2	2 1/2
7 M T DYER			0		0	0	●	0		
8 T THOMSON	1/2	0		1/2	1/2	1	1	●	1	
9 C F BOYLE	0		0		1/2	1/2		0	●	

**CANDIDATES 91-93**

Controller: C R Beechan

No.	1	2	3	4	5	6	7	8	9	10	11	12	13	Pts
1 V HULME	●		1	1		1	1	1/2	1/2		1	1	0	
2 V M COOK		●	1/2	1				1/2	0	1	0		0	
3 J HERRIES	0	1/2	●			1		1/2	1	1	1	1	0	
4 M SVYSTUN	0	0		●				1/2	1				0	
5 D HARVEY					●		1/2		1/2				0	0
6 R TURNER	0		0			●	0		1				0	
7 J WATSON	0				1/2	1	●	1/2	1/2	1		1	1	
8 C McKAY	1/2	1/2	1/2	1/2			1/2	●	1/2		1/2		1	
9 B GOODWIN	1/2	1	0	0	1/2	0	1/2	1/2	●	1		1/2	0	
10 D NEIL		0	0					0	0	●				
11 M H DUNN	0	1	0					1/2			●			
12 D SALTER	0		0		1		0	1/2	1/2			●	1	
13 V RUTHERFORD	1	1	1	1	1	1	0	0	1				0	●

# PREMIER TOURNAMENTS

Controller: I S Campbell

A	1	2	3	4	5	6	Pts
1 A WRIGHT	●	●	●	●	●	●	3
2 SA MURRAY	●	●	●	●	●	●	5½
3 A KILGARIFF	●	●	●	●	●	●	3½
4 AR WILSON	●	●	●	●	●	●	3½
5 SG MACKENZIE	●	●	●	●	●	●	W/O
6 DA HUGHSON	●	●	●	●	●	●	½

B	1	2	3	4	5	6	Pts
1 WS BOACH	●	●	●	●	●	●	6
2 MP ROBERTS	●	●	●	●	●	●	8
3 R DICKSON	●	●	●	●	●	●	6½
4 PJ CARROLL	●	●	●	●	●	●	½
5 V HARPER	●	●	●	●	●	●	5½
6 DV PENMAN	●	●	●	●	●	●	3½

C	1	2	3	4	5	6	Pts
1 D CRICHTON	●	●	●	●	●	●	3½
2 R COCHRANE	●	●	●	●	●	●	7
3 SR MITCHELL	●	●	●	●	●	●	2
4 A FEINSTEIN	●	●	●	●	●	●	8
5 V HARPER	●	●	●	●	●	●	5½
6 DV GIBBS	●	●	●	●	●	●	4

D	1	2	3	4	5	6	Pts
1 K SEYFRIED	●	●	●	●	●	●	2½
2 AG STALKER	●	●	●	●	●	●	6½
3 NR McEVAN	●	●	●	●	●	●	4½
4 A MACHILLEN	●	●	●	●	●	●	5½
5 MF PEARCE	●	●	●	●	●	●	W/O
6 B SUDJIC	●	●	●	●	●	●	1

B	1	2	3	4	5	Pts
1 K GORDON	●	●	●	●	●	4½
2 PR SMITH	●	●	●	●	●	0
3 R TURNER	●	●	●	●	●	4
4 J COPLBY	●	●	●	●	●	6½
5 JE WHIR	●	●	●	●	●	5

# MAJOR TOURNAMENTS

Controller: Sections A/C ; D Salter:

A	1	2	3	4	5	Pts
1 I SNEDDON	●	●	●	●	●	4
2 ND HOOD	●	●	●	●	●	1
3 G McKNIGHT	●	●	●	●	●	½
4 J STALLARD	●	●	●	●	●	½
5 AC BROWN	●	●	●	●	●	5½

B	1	2	3	4	5	Pts
1 B THOMPSON	●	●	●	●	●	0
2 B MILLIGAN	●	●	●	●	●	3
3 R DOWSON	●	●	●	●	●	5½
4 F HALL	●	●	●	●	●	4
5 J PARKER	●	●	●	●	●	7½

C	1	2	3	4	5	Pts
1 R BRACON	●	●	●	●	●	6½
2 M MAY	●	●	●	●	●	6½
3 DR CUMMING	●	●	●	●	●	5
4 CH BRINSON	●	●	●	●	●	0
5 J TAYLOR	●	●	●	●	●	2

Controller: Sections D/E ; J Anderson

D	1	2	3	4	5	Pts
1 I MACKINTOSH	●	●	●	●	●	5
2 RG EBDON	●	●	●	●	●	0
3 D COSGROVE	●	●	●	●	●	3
4 P McCREA	●	●	●	●	●	4
5 Z ZERKON	●	●	●	●	●	W/O

B	1	2	3	4	5	Pts
1 A ARMSTRONG	●	●	●	●	●	5½
2 A MacQUEEN	●	●	●	●	●	5
3 J CASSIDY	●	●	●	●	●	4
4 AC MORRIS	●	●	●	●	●	5
5 F ANDRES	●	●	●	●	●	½

# QUARTETS 1991

(Controller - Ian V S Mitchell)

Q160	1	2	3	4	Pts	Q161	1	2	3	4	Pts
1 V A McINTOSH	●	●	●	●	W/O	1 S J BACZKOWSKI	●	●	●	●	1
2 M P FORD	●	●	●	●	2	2 A GORDON	●	●	●	●	3
3 R BRACON	●	●	●	●	5	3 S GUNN	●	●	●	●	3½
4 J BELL	●	●	●	●	5	4 R TURNER	●	●	●	●	4½

# QUARTETS 1992

POSTAL KNIGHT	1	2	3	4	Pts	POSTAL SHIELD	1	2	3	4	Pts
1 R STOKES	●	●	●	●	W/O	1 J G BLENCOVE	●	●	●	●	3
2 A WRIGHT	●	●	●	●	3	2 S MACGILCHRIST	●	●	●	●	3½
3 D R CUMMING	●	●	●	●	1½	3 DG McROBERTS	●	●	●	●	1
4 R TURNER	●	●	●	●	1½	4 I MACKINTOSH	●	●	●	●	4½

Q162	1	2	3	4	Pts	Q163	1	2	3	4	Pts
1 I SNEDDON	●	●	●	●	4	1 A G B BIRD	●	●	●	●	5½
2 V CAMERON	●	●	●	●	0	2 J MERRIFIELD	●	●	●	●	2
3 A MacQUEEN	●	●	●	●	2	3 D FLEMING	●	●	●	●	0
4 Z ZERKON	●	●	●	●	W/O	4 T A H TAYLOR	●	●	●	●	4½

Q164	1	2	3	4	Pts	Q165	1	2	3	4	Pts
1 R DICKSON	●	●	●	●	4½	1 E A BAILEY	●	●	●	●	5
2 T McMORRAN	●	●	●	●	5	2 A ARMSTRONG	●	●	●	●	3
3 G PLANT	●	●	●	●	1	3 A TAYLOR	●	●	●	●	3
4 S R CAPSEY	●	●	●	●	1½	4 CA MACGREGOR	●	●	●	●	1

Q166	1	2	3	4	Pts	Q167	1	2	3	4	Pts
1 R J BURRIDGE	●	●	●	●	4	1 J McTAGGART	●	●	●	●	3
2 A ARMSTRONG	●	●	●	●	4	2 S M YOUNG	●	●	●	●	6
3 R PELLIS	●	●	●	●	2	3 J CASSIDY	●	●	●	●	2
4 F ANDRES	●	●	●	●	2	4 R B CROSSIE	●	●	●	●	1

Q168	1	2	3	4	Pts	Q169	1	2	3	4	Pts
1 M P FORD	●	●	●	●	2½	1 R BRACON	●	●	●	●	4½
2 J ANDERSON	●	●	●	●	4	2 CA MACGREGOR	●	●	●	●	3
3 D R R ELLIS	●	●	●	●	5½	3 S HILTON	●	●	●	●	4½
4 F R ROSS	●	●	●	●	0	4 J BELL	●	●	●	●	0

# QUARTETS/HANDICAP

Entries can be made at any time to Alan Hind. New pairings will be arranged when there are sufficient new players to do so.

Controller:  
Ian V S Mitchell  
54 Strathtay Road,  
Latham,  
Perth PH1 2LZ

# HANDICAP TOURNAMENT by Allan Hislop

The 1991/92 season ended in October with prizemonies going to the following: R. Crosby 7.8 pts; D. Cumming 7 pts; S. Young and B. Milligan 6 pts; A. Swann 4.2 pts and A. Armstrong 4.1 pts.

The following promotions took place:

D. Cumming to Class 1; G. McMaster, N. Talbot and B. Milligan to Class 3. Dr. A.C. Brown, P. McCrea and M. Dunn to Class 4; R. Crosby to Class 5.

As you will have read in the October issue of the Magazine, the season now starts at the beginning of January, hence the seeming delay to the start of this season. Seventeen players have entered the Handicap 1992/93 and here are the pairings which involve some 66 games :

Name	H/C No.	Pairings/Opponents H/C No.
J.P. Jack	41	188,197,176
R. Beacon	188	41,175,206
S. Young	175	230, 188, 206, 222
D.R. Cumming	197	41, 222, 224, 193 (awaiting 2 more)
A. Armstrong	176	41, 206, 222, 224, 193
T.N. Talbot	230	175, 224, 226
B. Milligan	206	188, 175, 176, 222, 193, 240, 241,242
Dr. A.C. Brown	222	176, 175, 197, 206
J. Cassidy	193	197, 242, 206, 130, 176
A. Wilson	224	176, 241, 197, 230
R. Crosby	226	230, 130, 240
S. Hilton	130	226, 193, 240, 228, 242
D. McGarva	240	206, 226, 130
J. Lange	221	228
G. Plant	228	130, 221, 241
M.A. May	241	224, 206, 242, 228
M. Ford	242	193, 206, 130, 241

The following results have been received since those printed in the October issue, ie. from 8/8/92 to 31/12/92 :

DR Cumming	½½	A Armstrong	½½	A Swann	2	R Ebdon	0
DR Cumming	2	J Walker	0	D Barlow	2	A Craig	0
B Milligan	1	J Lange	0	A Swann	2	A Armstrong	0
A Craig	1	R Beacon	1	A Swann	2	J Walker	0
R Crosby	0	B Milligan	1	Dr AC Brown	1	M Dunn	0
N Talbot	2	J Cassidy	0	A Armstrong	½	S Young	½

## Handicap Results contd

S Young	2	J Walker	0	G Plant	1½	J Dunnachie	½
B Milligan	0	A Armstrong	2	G Plant	1	R Crosby	0
B Milligan	1	A Armstrong	0	S Hilton	½	DR Cumming	½
J Taylor	2	B Milligan	0	S Hilton	2	F Andres	0
B Milligan	½½	G Plant	½½	A Angus	1	Ann McMonigle	0
G McMaster	2	PR Smith	0	JP Jack	1	A Swann	0
G McMaster	2	A Smith	0	A MacKay	2	J Dunnachie	0
B Milligan	1	F Andres	0	N Talbot	2	J McKenna	0
GA Morton	1	S Young	0	GA Morton	2	A Swann	0
DR Cumming	1½	J Cassidy	½	Dr AC Brown	1½	R Pells	½
DR Cumming	1	A Swann	0	N Talbot	1	A Armstrong	0

## OPENINGS TOURNAMENTS (Controller: Tom Thomson)

OT1 QP Irregular  
1 d4 Nf6 2 c4 Nc6

No	1	2	3	Pts	Pos
1 G WOOD	•	-	11	2	1
2 Z ZERKON	-	•	-	0	½b
3 J CASSIDY	••	-	•	0	2

OT2 - QP Blumenfeld  
1 d4 Nf6 2 c4 e6 3 Nf3 c5  
4 d5 b5 5 Bg5

No	1	2	3	4	Pts	Pos
1 J BLBNCOVR	•	•	•	•	4½	2
2 J HERRIFIELD	••	•	•	•	2	3r
3 F ANDRES	••	•	•	•	2	3c
4 J CASSIDY	••	•	•	•	4½	1

## SCOTTISH CCA TOURNAMENTS 1993

All of the competitions began in January, with the new structure of 2 Candidates Tournaments and the introduction of Minor Tournaments. The SCCA League has 3 Divisions and there are plenty of entries to the Quartets and Handicap events. There is not enough space in this magazine to include full details but the crosstables for the new Championship and Candidates Sections are shown on the next page. Full pairings for all 1993 events will be included in the next edition.

Remember, Quartets and Handicap tournaments can be entered at any time and will begin as soon as pairings can be arranged.

# CHAMPIONSHIP 1993/94

Controller: A. Maxwell

No		1	2	3	4	5	6	7	8	9	Pts
1	D M LIVIE	◆									
2	A T HISLOP		◆								
3	W HULME			◆							
4	J STEVENSON				◆						
5	G D PYRICH					◆					
6	G H BIRD						◆				
7	M T DYER							◆			
8	T THOMSON								◆		
9	C F BOYLE									◆	

# CANDIDATES 1993/94

Controller: C.R. Beecham

## SECTION A

No		1	2	3	4	5	6	7	Pts
1	R W M BAXTER	◆							
2	I A MARKS		◆						
3	A G STALKER			◆					
4	R TURNER				◆				
5	A FEINSTEIN					◆			
6	J E WEIR						◆		
7	D A HUGHSON							◆	

## SECTION B

No		1	2	3	4	5	6	7	Pts
1	J WATSON	◆							
2	J HENDERSON		◆						
3	J COPLEY			◆					
4	M P ROBERTS				◆				
5	S A MURRAY					◆			
6	R COCHRANE						◆		
7	A N MacMILLEN							◆	

# SCOTTISH CCA LEAGUE 1992

## DIVISION 1 (Controller - A. Swann)

A STREATHAN & BRITTON 7½		B KNIGHTS OF THE SQUARE TABLE 7½	
1	C A McNab 1 1 v E1	1	K Bowden ½ ½ v D1
2	S R Gillam ½ ½ v D2	2	J Cox ½ 1 v C2
3	R A Inglis 1 1 v C3	3	J Clarke 1 1 v F3
4	Mrs M Inglis 0 ½ v B4	4	B Powell 1 ½ v A4
5	R Haldane 1 1 v F5	5	J Ryan 1 ½ v B5

## C BLACK KNIGHT 2½

1	G R Sprott 1 0 v F1
2	I Reeman ½ 0 v B2
3	D R Reid 0 0 v A3
4	B Spencer 0 0 v E4
5	G Wood ½ ½ v D5

## D PERTH CORRESPONDENTS 6

1	A P Borwell ½ ½ v B1
2	D A Gibb ½ ½ v A2
3	V Rutherford ½ ½ v B3
4	E A Horn 1 1 v F4
5	J Falconer ½ ½ v C5

## E KIRKCALDY KINGS 5½

1	G D Pyrich 0 0 v A1
2	T Thomson 1 1 v F2
3	A Burnett ½ ½ v D3
4	I Marshall 1 1 v C4
5	M C Grayson 0 ½ v B5

## F HEDGANE 1

1	C R Beecham 0 1 v C1
2	R V Stokes 0 0 v B2
3	A Kilgariff 0 0 v B3
4	M B McGhee 0 0 v D4
5	D McRoberts 0 0 v A5

## DIVISION 2 (Controller - A. Nisbet)

### A FLYING TRAPOTS 4

1	P Cassar 0 0 v E1
2	D V Gibbs ½ ½ v D2
3	R D Hirsch 0 1 v C3
4	M Nesbitt 1 1 v B4
5	R Thornhill 0 0 v F5

### B KIRKINTILLOCH 5

1	S Rettle 0 0 v D1
2	A Swann ½ ½ v C2
3	R Turner 1 1 v F3
4	P McConnell 0 0 v A4
5	V Harper 1 1 v B5

### C BRUTAL REALISM 5

1	J S Murray ½ ½ v F1
2	P Coffield ½ ½ v B2
3	A Thomson 1 0 v A3
4	B Keenan ½ ½ v E4
5	S R Capsey ½ ½ v D5

### DUNDEE & VICTORIA "A" 6½

1	J King 1 1 v B1
2	F Stevenson ½ ½ v A2
3	J Anderson 1 0 v B3
4	R Burnett 1 ½ v F4
5	G Mackenzie ½ ½ v C5

### E HAVICK SUPERKINGS 4

1	D Kilgour 1 1 v A1
2	A Armstrong 0 0 v F2
3	J Taylor 0 1 v D3
4	B Milligan ½ ½ v C4
5	L Kilday 0 0 v B5

### F WANDERING DRAGONS 5½

1	D Crichton ½ ½ v C1
2	J Konareki 1 1 v B2
3	C Donkia 0 0 v B3
4	C Dowle 0 ½ v D4
5	C Stewart 1 1 v A5

**DIVISION 3 (Controller - M.C. McQueen)**

<b>A DUNDEE &amp; VICTORIA "B" 5 1/2</b>	<b>B KNIGHT SAC 6 1/2</b>
1 C McLellan 0 0 v 11	1 T Tait 11 v A1
2 B McLafferty 0 1/2 v D2	2 R Holland 01 v C2
3 B Malcolm 11 v C3	3 I McKechnie 01 v D3
4 K Boyack 1/2 1/2 v C4	4 P Tait 1 1/2 v D4
5 M Ferrie 11 v D5	5 A Bennigan 1/2 1/2 v C5

<b>C EDINBURGH WEST 3</b>	<b>D ANYBODY ELSE 5</b>
1 V McGhee 0 0 v D1	1 D M Livie 11 v C1
2 V M Grant 1 0 v B2	2 A T Hislop 1 1/2 v A2
3 G Mackay 0 0 v A3	3 A Maxwell 1 0 v B3
4 B McBwan 1/2 1/2 v A4	4 A Hind 0 1/2 v B4
5 S Young 1/2 1/2 v B5	5 I V S Mitchell 0 0 v A5



**3rd SCOTTISH OPEN TOURNAMENT**

There are three sections and the top two players in each section qualify for the Final:

Section 1	1	2	3	4	5	6	7	8	9	Pts
1 VD TAYLOR	●	1	1	1	1	0	1	1	1	7
2 V HARPER	0	●	1/2	0	1	1/2	1	1	0	4
3 DR CUMMING	0	1/2	●	0	1	1/2	1/2	1	1/2	4
4 A MORRIS	0	1	1	●	1	1/2	1	1	1	6 1/2
5 D FLEMING	0	0	0	0	●	0	0	1	0	1
6 GD PYRICH	1	1/2	1/2	1/2	1	●	1/2	1	1	6
7 SR MITCHELL	0	0	1/2	0	1	1/2	●	1	0	3
8 F ANDRES	0	0	0	0	0	0	0	●	0	0
9 A MacHILLAN	0	1	1/2	0	1	0	1	1	●	4 1/2

Section 2	1	2	3	4	5	6	7	8	9	Pts
1 GR NIXON	●	0	1	1/2	0	1	0	0	0	2 1/2
2 AD ARCHIBALD	1	●	1	1	1	1/2	1	1/2	1	7 1/2
3 SM YOUNG	0	0	●	1/2	1/2	1	1	1/2	0	3 1/2
4 AD KILGARIFF	1/2	1/2	●	0	1/2	1	1/2	0	1	4 1/2
5 JM HERRIES	1	1/2	1	●	1/2	1	0	1	0	6 1/2
6 AGE BIRD	0	1/2	0	1/2	1/2	●	1	0	0	2 1/2
7 HF PEARCE	0	0	0	0	0	0	●	0	1/2	1/2
8 RF TURNER	1	1/2	1/2	1/2	1	1	1	●	1/2	6 1/2
9 B LYBURN	1	1	1	1	0	1	1/2	1/2	●	7 1/2

Section 3	1	2	3	4	5	6	7	8	9	Pts
1 D SALTER	●	0	1/2	1/2	1/2	1	0	0	1	3 1/2
2 GE WALLWORK	1	●	1	0	1	1	1/2	1	1	6 1/2
3 R MONTGOMERY	1/2	0	●	0	1	1	1	0	1	4 1/2
4 IF REENAN	1/2	1	1	●	1	1	1/2	0	1	6
5 SF DRUNSFIELD	1/2	0	0	0	●	1	0	0	1	2 1/2
6 F PARK	0	0	0	0	0	●	0	0	1	1
7 MA MAY	1	1/2	0	1/2	1	1	●	1/2	1	5 1/2
8 I MACKINTOSH	1	0	1	1	1	1	1/2	●	1	6 1/2
9 JS CAIRNEY	0	0	0	0	0	0	0	0	●	0

SCOTTISH OPEN CONTROLLER:

D.M. Livie,  
58 Elmore Avenue,  
Slinhill,  
GLASGOW G44 5AY.

**1st SCOTTISH OPEN TOURNAMENT FINAL**

	1	2	3	4	5	6	7	8	9	Pts
1 GE WALLWORK	●	0	1	0	1	1/2	1	1	0	4 1/2
2 M DOWN	1	●	1	1/2	1	1	1/2	1	1/2	6 1/2
3 N KILGARIFF	0	0	●	0	1/2	0	0	1	0	1 1/2
4 VD TAYLOR	1	1/2	1	●	1	1	1	1	1/2	7
5 RG WALKER	0	0	1/2	0	●	0	0	0	0	1 1/2
6 CP BOTHAM	1/2	0	1	0	1	●	0	0	1	3 1/2
7 J TIMPERLEY	0	1/2	1	0	1	1	●	1	1/2	5
8 V DILWORTH	0	0	0	0	0	1	0	●	1/2	1 1/2
9 RVH BAXTER	1	1/2	1	1/2	1	0	1/2	1/2	●	5 3/4

**2nd SCOTTISH OPEN TOURNAMENT**

**SBMI-FINAL**

(Controller: Sections A & C - DM Livie)  
(Controller: Section B - A Hind)

SECTION A	1	2	3	4	5	6	Pts
1 D SALTER	●	0	0	0	1	0	1
2 CJ LENNOX	1	●	1	1/2	1	1	4 1/2
3 A HIND	1	0	●	1/2	1	0	2 1/2
4 J McLEAD	1	1/2	1/2	●	1	1	4
5 A MacMILLAN	0	0	0	0	●	1	1
6 R GIULTAN	1	0	1	0	0	●	2

SECTION B	1	2	3	4	5	6	7	Pts
1 C McKay	●	0	0	0	0	0	0	0
2 P McCONNELL	1	●	0	0	0	0	0	1
3 J McLEAD	1	1	●	1/2	1/2	0	1	4
4 DM LIVIE	1	1	1/2	●	1/2	0	1	4
5 T THOMSON	1	1	1/2	1/2	●	1	1	5
6 N MITCHELL	1	1	1	1	0	●	1	5
7 HF PEARCE	1	1	0	0	0	0	●	2

**SECTION C**

	1	2	3	4	5	6	Pts
1 A MUKHERJEE	●	1				1	
2 J COPLBY	0	●	1	0		1	2
3 CR BEECHAN		0	●				
4 GE WALLWORK		1		●		1/2	
5 R STOKES					●		w/d
6 A McMILLAN	0	0	1/2			●	

OPEN TOURNAMENT  
CONTROLLER:

D.M. Livie,  
58 Elmore Avenue,  
GLASGOW G44 5AY.



# CLASSIC GAMES OF CORRESPONDENCE CHESS

by John Hawkes

## TAL'S KNIGHT-SAC IN THE ALEKHINE B04

The featured game involves someone not unknown in Scotland: Danny Kopec was around Edinburgh in the 70s.

Here he is on Board 5 for the USA in the 3rd NATT.

White: D. Kopec (USA)  
Black: P.J. Sowray (ENG)

1	e4	♟f6
2	e5	♞d5
3	d4	d6
4	♞f3	dxe5

Of course there are alternatives, and good ones too; 4 ... g6 was a comfortable draw for Black in Charushin (RUS)-Cordovil (POR), WCCC 3/4 Final, Sect. 1, 1987/92 which went: 5 ♟c4 ♞b6 6 ♟b3 ♟g7 7 a4 a5 8 0-0 0-0 9 h3 ♞c6 10 ♞e2 dxe5 11 dxe5 ♞d4 12 ♞xd4 ♞xd4 13 ♞e1 ♟e6 14 ♞d2 ♞d7 15 ♞c4 ♞xc4 16 ♟xc4 ♞fd8 17 ♞a3 ♟xc4 18 ♞xc4 ♞d5 19 ♞e2 ♞e6. And a relative novelty 4 ... ♞b6! more than held for Black in the high-level encounter Sabel (FIN)-Honfi (HUN) in the XI Olympiad Prelims, going: 4 ... ♞b6 5 a4 a5 6 ♟b5+ c6 7 ♟d3 ♟g4 8 h3 ♟xf3 9 ♞xf3 dxe5 10 dxe5 e6 11 0-0 ♞8d7 12 ♞g3 ♞c7

13 ♞e1 g6! and White was outplayed and lost in 36.

5	♞xe5	♞d7
6	♞xf7	♞xf7
7	♞h5+	♞e6
8	c4	

Maybe the strongest, but 8 g3 is also a load of trouble for Black, eg. 8 ... ♞7f6 9 ♟h3+ ♞d6 10 ♞e5+ ♞c6 11 ♟g2 b5 12 a4! b4 13 c4....., as in Utkin-Hrantz, CC 1971.

8	.....	♞5f6
9	d5+	♞d6
10	♞f7	♞b8

The Frenchman Hauchard rates Black's chances of survival by 10 ... ♞e5 and in the game Ziatdinov-Hauchard (Parthenay 1992) he was proved correct: 10 ... ♞e5 11 ♟f4 c5 12 ♞c3 a6 13 0-0-0 g6 14 ♟xe5+ ♞xe5. A juicy proposition for a CC game ... White to mate in how many? 15 d6 ♟h6+ 16 ♞c2 (16 ♞b1 ♞f8!) ... ♞e8 17 ♟d3! (flashissime) ♞xf7 18 ♞he1+ ♞xd6 19 ♟xg6+ ♞c7 20 ♟xf7 ♟f8 and his King was in relative safety, the Queens were off and he was material up. According to Bagirov's theory (1987), White should hit Black with 13 b4! b6 14 ♞b1! and

entertain-mating possibilities via 14 ... g5 15 ♟g3 ♟h6 16 bxc5+ bxc5 17 ♞b7!! ♟d7 18 ♟d3 ♞e8 19 ♟f5!! ♞xf7 20 ♞e4+ ♞xe4 21 ♞d7++ Phew!

However, a 1991 CC game Elburg (NLD)-Krantz (GER) went 13 b4 ♞b6 14 ♞c1 g5 15 ♟g3 h5 16 ♞g6 ♞b4 17 ♞g5 ♞fg4 18 ♞g6+ ♞d7! and 0-1 in 32.

11	c5+	♞d7
12	♟f4	♞e8
13	♞e6+	♞d8
14	♞e5	♞d7
15	♞c3	



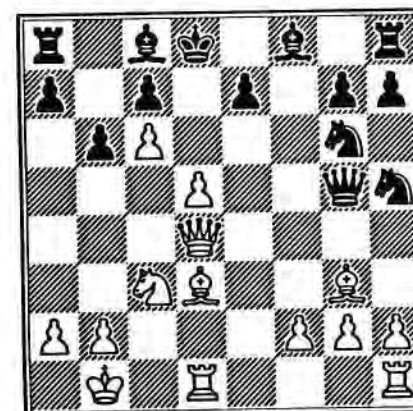
Worth the sacrifice of two pawns.

15	.....	♞g4
16	♞e2	♞f5
17	♞d2	

Getting castled long pronto. Yearbook 4 carries the game Maier-De Veij, CC 1985, going: 17 ♟g3 g6 18 h3 ♞f6 19 ♞c4

♟h6 20 ♟d3 ♞g5 21 0-0 ♞h5 22 ♞e4 ♞f5 23 d6! and White won.

17	.....	♞e5
18	0-0-0	♞bd7
19	c6	♞f6
20	♞d4	♞g6
21	♟g3	♞h5
22	♟d3	♞g5+
23	♞b1	b6



24 ♟xc7+

And the black King sets off on a fatal trip to the east!

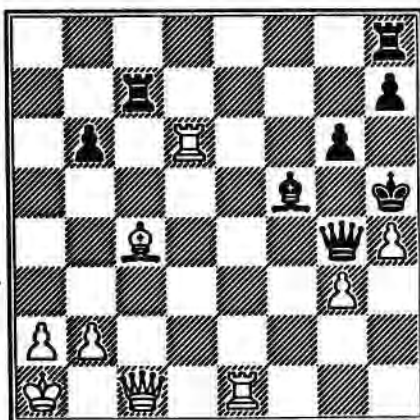
24	.....	♞xc7
25	♞b5+	♞d8
26	d6	exd6
27	♞xd6	♟xd6
28	♞xd6+	♞e8
29	♟c4	♟f5+
30	♞a1	♞f6
31	♞he1+	♞e7
32	♞c7	♞c8
33	♞xa7	♞f4
34	c7	g6

35 g3 ♖h3  
 36 ♗a4+ ♜f8  
 37 ♗a3 ♜g7  
 38 ♜d6 ♗g5  
 39 ♗c3+ ♜h6  
 40 f4 ♜xf4  
 41 h4! ♗g4  
 42 ♜xe7 ♜h5

White threatened ♗g7+ followed by ♗xh7+!

43 ♗e3 ♜g2  
 44 ♗c1 ♜e1  
 45 ♜xe1 ♜xc7

Almost =. It's on material and a threat ..... b5.



46 ♜d4! 0

A very nice finishing touch. 46 ... ♗xg3 47 ♜e2+ ♜g4 48 ♗g5 mate.

### 100 CLUB

This is a club for members who really would like to help with the development of the Scottish Correspondence Chess Association. Currently there are almost 80 units issued but we need to increase this to 100 - please help us!

The subscription is only £1 per month per unit, with two prizes each month currently approx £24 and £16 respectively - members may apply for more than one unit if they so wish!

A monthly bankers order form can be obtained from our Treasurer, Iain Campell, 32 Lomond Drive, Newton Mearns, Glasgow G77 6LR. If you return it to him before the 10th of the month, then you will be eligible to be in the draw for that month.

Recent winners:

September GE Wallwork  
 AD Kilgariff  
 October KB McAlpine  
 GWG Livie  
 November A Grant  
 GWG Livie  
 December IA Mackintosh  
 GD Pyrich

## THEORY CORNER

by Ted Greiner

Whenever I hear or read a story of a confidence man cheating people in some get-rich-quick scheme, I shake my head and wonder how people can be so gullible. However, when I was scanning my bookshelf recently, it struck me that I had a lot of books with titles like Beating the Sicilian, Winning with 1 d4, and Opening Repertoire for the Attacking Player. Looking at all these chess versions of the get-rich-quick scheme, I realised I wasn't so world-wise as I thought I was. Most of my opponents weren't so easily crushed by these winning ideas as the advertising blurbs promised.

To be honest, many of these books aren't really bad, it's just that the promises of winning advantages out of the opening have had me constantly changing my opening systems with White.

The result is that I don't have a feel for any of the positions I get out of the opening. My openings with Black have not changed much in 20 years, so even if I'm playing a supposedly inferior variation, I feel more comfortable in a familiar position.

When the B group of the 10th Anniversary Scottish CCA Magazine Tournament began, I was a 1 d4 player. Despite being armed with secret moves in the Gruenfeld and Nimzo-Indian, the following examples will show that I lost most of the opening battles.

QGD, Semi-Slav (D47)

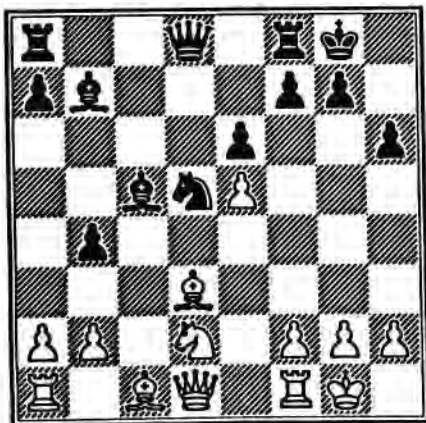
White: T. Greiner (USA)  
 Black: G. Rickers (GER)

	12	♜xc5	♜xc5
	13	dxc5	♜xc5
	14	0-0	h6
	15	♜d2	
1	d4	d5	
2	c4	c6	
3.	♜f3	♜f6	
4	♜c3	e6	
5	e3	♜bd7	
6	♜d3	dxc4	
7	♜xc4	b5	
8	♜d3	♜b7	
9	e4	b4	
10	♜a4	c5	
11	e5	♜d5	

What is White planning with this move? Is the Knight going to c4 or e4? None of my references were helpful in explaining the idea of 15 ♜d2. The subsequent continuation didn't help either because Black immediately cuts across White's plan with 15 ... ♜c3 leading eventually to a

position where "White is better". But why does Black have to play 15 ... ♖c3? Why not something like 15 ... 0-0? After looking at the position for a while I could not find anything concrete for White, maybe 16 ♗e4 looking for a K-side attack. But what are the chances he would play 15 ... 0-0 anyway, so I went ahead with 12 ♗xc5. Needless to say 15 ... 0-0 was exactly what Black played and I never did solve the problem. The game continued:

15 ..... 0-0



16 ♗e4 ♖d4  
17 ♗h5 f5  
18 exf6 e.p.

18 ♗xh6 was not good.

18 ..... ♗xf6  
19 ♗e2? ♗d5

And White had to fatally weaken f2 with 20 ♖fe1. What should White do after 15 ... 0-0, any ideas?



Nimzo-Indian Defence (E46)

White: T. Greiner (USA)  
Black: V. Karlsson (ICE)

1 d4 ♗f6  
2 c4 e6  
3 ♗c3 ♖b4  
4 e3 0-0  
5 ♗e2 ♖e8  
6 a3 ♗f8

I could not remember having ever seen this variation before. I was surprised that my opening books granted Black easy equality and in the few master games I could find, White was soon struggling to maintain the balance. However, I found a game reference in Chess Informant and I thought I could improve on it.

7 d5 exd5  
8 cxd5 a5  
9 ♗g3 ♗a6  
10 ♗e2 ♗c5  
11 0-0 d6

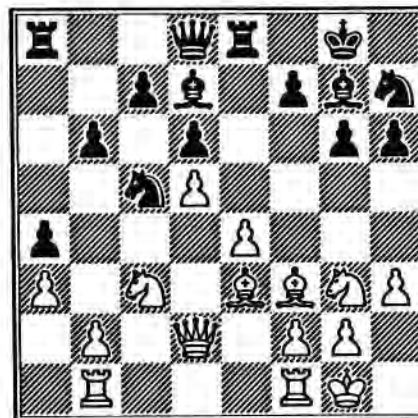
But Black varies first. Gurevic-Shabtal, Inf. 47, #689 (note) went 11 ... c6 12 ♗f3 a4 13 ♖b1 (I wanted to try 13 ♖e1) 13 ... ♗c7 14 e4 ♗d6 15 ♗g5 ♗e5 unclear.

12 ♗f3 a4

13 ♖b1

Here I stuck with Gurevic's move because the d5 pawn has not been challenged. 13 ... ♗b3 is met by 14 ♗xa4.

13 ..... ♗d7  
14 e4 g6  
15 ♗g5 h6  
16 ♗e3 b6  
17 h3 ♗g7  
18 ♗d2 ♗h7!

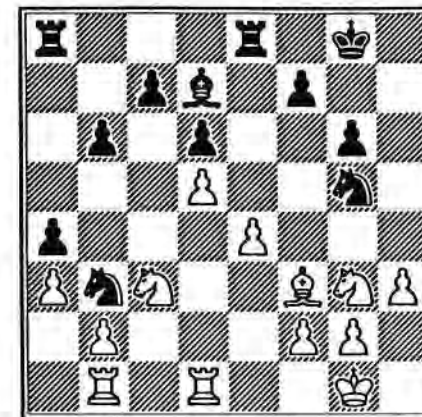


19 ... ♗g5 would either force White to part with a Bishop or cause him to back off (ie. 19 ♗e2 ♗g5 20 f3 ♗b3 21 ♗d1). So I decided that I had to accept the pawn.

19 ♗xh6 ♗b3  
20 ♗e3 ♗xh6!

I thought Black might try to trap the Bishop with 20 ... ♗d4 21 ♗d3 g5 (♗♗g7) 22 ♗g4! ♗xg4 23 hxg4 ♗f6 24 ♗f5 (♗♗g7).

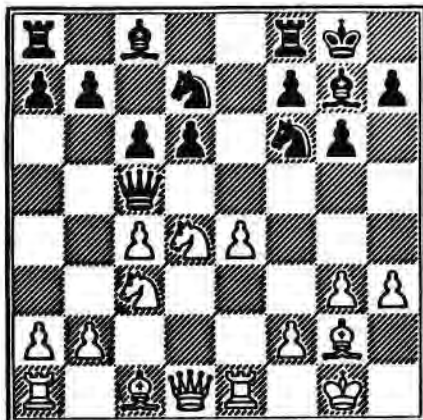
21 ♗xh6 ♗g5  
22 ♗xg5 ♗xg5  
23 ♖fd1 ½ ½



King's Indian Defence (E69)

White: T. Greiner (USA)  
Black: T.J. Craig (SCO)

1 d4 ♗f6  
2 c4 g6  
3 ♗c3 ♗g7  
4 g3 0-0  
5 ♗g2 d6  
6 ♗f3 c6  
7 0-0 ♗bd7  
8 e4 e5  
9 h3 ♗b6  
10 ♖e1 exd4  
11 ♗xd4 ♗c5



12 ♖f1

This move is given by Geller in his book on the King's Indian. Several months after I played 12 ♖f1, the revised edition of ECO "E" was issued and the recommended line for White was 12 b3 ♘e8 13 ♗e3 ♖a5 14 ♖c2 a6 15 ♗ab1 (Smejkal - Mrda, Baden-Baden 1985).

12 ..... ♘g4  
13 ♘ce2 ♘ge5  
14 b3 ♖a5!

Threatens 15 ... c5.

15 ♗g2 ♘d3!  
16 ♗f1

White's pieces march backward.

16 ..... ♘xc1  
17 ♗xc1 ♗e8

If 17 ... ♖xa2 18 ♗a1 ♖b2  
19 ♖d3, with the idea 20 ♗fb1.

18 ♖c2 a6  
19 a3 ♘c5  
20 ♗b1

White has a space advantage, but I could make nothing of it and the game was soon drawn. What White needs is a black-squared Bishop.



Another one of my 1 d4 games was a Catalan against FIDE IM Nokso-Koivisto which ended in a draw. I was going to include that opening in my article, but I figured why just give that information away? A lot of people would pay £5 for "How to Draw with an International Master", right? All I need is a publisher!

Please send games (preferably annotated to Games Editor:

George Pyrich,  
53 Dunnikier Road,  
Kirkcaldy,  
Fife, KY1 2RL.



#### Address Changes?

Members are asked to advise changes of address promptly to their opponents, the tournament secretary, the Scottish CCA Secretary and the Editor of the SCCA Magazine.

## CANDIDATES TOURNAMENT 1990-92 A RETROSPECTIVE

by Richard Beecham

Nº		1	2	3	4	5	6	7	8	9	Pts.	(S.B.)
1	W. Hulme	□	½	½	½	1	1	½	1	½	5½	20.25
2	T. Thomson	½	□	½	1	1	0	1	½	1	5½	20.25
3	D. Holmes	½	½	□	½	0	1	1	1	1	5½	18.50
4	G. Bird	½	0	½	□	1	0	1	1	1	5	
5	W. M. Cook	0	0	1	0	□	1	1	0	1	4	
6	D. Harvey	0	1	0	1	0	□	½	0	1	3½	
7	C. C. McKay	½	0	0	0	0	½	□	1	1	3	
8	A. W. I. Campbell	0	½	0	0	1	1	0	□	0	2½	
9	A. Maxwell	½	0	0	0	0	0	0	1	□	1½	

The tournament ended in a triple tie for first place with Tom Thomson and William Hulme edging out Donald Holmes on S.B. Graham Bird put in his usual solid performance, while Bill Cook's uncompromising play of 4 wins and 4 losses added to the enjoyment of the tournament. Doug Harvey can beat the best but was a little inconsistent, while Messrs. McKay, Campbell and Maxwell had their problems. Chris McKay moved house four times and Alistair Maxwell was house-hunting and getting married during the tournament!

We start with a little gem from Graham Bird, annotations are by myself as Graham has little time with his university lifestyle!

White: G.H. Bird  
Black: W. Cook

Pirc Opening B08

1 e4 d6  
2 d4 ♘f6  
3 ♘c3 g6

4 ♗e2 ♗g7  
5 ♗e3 c6  
6 ♖d2 ♖a5  
7 ♘f3 ♘bd7  
8 0-0 0-0

9 a3

A useful little move, in similar positions White usually plays the pawn to a4 to restrain Black's b5 but after pawn a6 the move cannot be prevented. The move played secured the Knight at c3 for as long as White requires. I could find no similar move order in ECO, Batsfords BCO1 and 2 or John Nunn's "The Complete Pirc as a model."

9 ..... ♖c7

An odd waste of tempo. 9 ... b5, ♖e8 and e5 all suggest themselves as candidate moves.

10 ♗h6 e5  
11 ♗xg7 ♘xg7  
12 ♖ad1 ♗b6?!

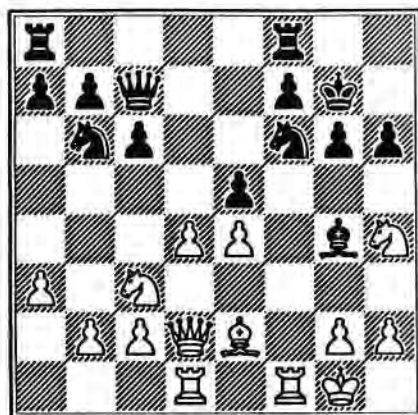
Dubious. Better would have been 12 ... ♖e8 threatening to win the e-pawn. White must now play 13 dxe5 dxe5 and then choose between 14 ♖d6 or 14 ♗c4 ♗c5 15 ♗g5!?

13 ♗h4 h6?

This is just bad (sorry, Bill!) 13 ... d5!?

comes into consideration viz 14 dxe5 ♖xe5 15 f4 ♖e7 and Black has the discovered attack on (♗h4).

14 f4 ♗g4  
15 fxe5 dxe5



16 ♖xf6!!

Graham was not sure about this move. He told me the sacrifice may or may not be correct but felt (sixth sense!) there was something in the position, so sac and see. Being a Professor of Philosophy, he would appreciate the words of Claude Adrien Helvetius, "He who invariably restrains himself is constantly unhappy upon fear of being unhappy sometimes."

16 ..... ♗xe2  
17 ♗xe2 ♘xf6  
18 ♖xh6 ♗d7

I could find no better move, after 18 ... ♘e7 19 ♖g7 threatening ♗xg6 wins. The same fate befalls 18 ... ♖h8 19 ♖f1+ ♘e6 20 ♖g7 ♖xh4 21 ♖f6+ and the Queen is lost.

The move 18 ... ♖ad8 looked OK, but 19 ♖f1+ ♘e6 (19 ... ♘e7 20 ♗xg6+ fxg6 21 ♖g7+ ♘d6 22 ♖xe5+ ♘d7 23 ♖g7+ ♘c8 24 ♖xf8!! wins) 20 ♗xg6! fxg6 21 ♖xg6+ ♘d7 22 ♖g7+ ♘c8 23 ♖xf8!! ♖xf8 24 ♖xf8+ ♖d8 25 ♖xd8+ is an easy win.

19 dxe5+ ♗xe5  
20 ♗f5! ♖g8

Once again 20 ... ♖d8 fails. 21 ♖g7+ ♘e6 22 ♗f4 mate!

21 ♖d6+ Resigns

△ △ △ △ △

To redress the balance, Bill Cook's win against Donald Holmes, who was by far the strongest OTB player in the tournament, is an excellent achievement. This is only Bill's second season at CC. He played at the Edinburgh Chess Club for a number of years before moving to the Highlands and with no chess clubs within reasonable distance, he has turned to correspondence chess. The annotations are by Bill Cook.

White: W.M. Cook  
Black: D.A. Holmes

Sicilian Defence B66

1 e4 c5  
2 ♗f3 d6  
3 d4 cxd4  
4 ♗xd4 ♗f6

5 ♗c3 ♗c6  
6 ♗g5 e6  
7 ♖d2 a6  
8 0-0-0 h6  
9 ♗e3 ♗e7  
10 f4 ♗d7  
11 h3

Preparing g5 and preventing ♗g4.

11 ..... b5  
12 ♗d3 ♗xd4  
13 ♗xd4 b4  
14 ♗e2 e5

A pawn offer, but after 13 fxe5 dxe5 14 ♗xe5 White's queenside is vulnerable. At e3 the white Bishop is pointing at h6.

15 ♗e3 ♖a5  
16 ♘b1

Until now the game has been following Adams - Shirov, 1990 Groningen, which ended in an exciting draw after 34 moves following a Knight sacrifice by Black. Of course, I didn't see that game until halfway through this one!

16 ..... exf4

Shirov played 0-0.

17 ♗xf4 ♗e6  
18 b3 ♗d7

Freeing f6 for the Bishop.

19 ♗d4 ♖c8

20 ♖xe6 fxe6  
 21 e5 0-0  
 22 exd6 ♗f6

For the second time in the game, a pawn is offered on the e5 square, and again declined. 21 ... dxe5 22 ♗g6+, or 21 ... ♖xe5 22 ♗xe5 dxe5 23 ♗g6+ and Black's King is exposed.

23 ♖e2 ♖e5  
 24 ♗xe5 ♗xe5  
 25 ♖e4 ♖f5



31 ♖a1

For such a horrible-looking move, this is surprisingly strong. It keeps control of d4 and e5, allows the essential ♖e1, and forces Black to lose time extricating his Queen.

31 ..... ♖b5  
 32 ♖e1 ♖a5  
 33 ♖d4 ♖b6?

The losing move. ♖c7 and ♖bb8 are both better.

34 ♗f5!

Neither piece can be taken. 34 ... ♖xd4 35 ♖e8+ mates, 34 ... ♖xf5 loses the Queen. In addition the e-file is cleared and the Bishop can head for g6.

34 ..... ♖g8  
 35 ♖xb6 ♖xb6  
 36 ♖e8 ♖bb8  
 37 ♗g6 ♖f8

The only move. If 27 ♗xe6+ ♖h8 28 ♗xc8 or f5 allows mate.

27 ..... ♗xd4  
 28 ♖xd4 ♖h8  
 29 d7

The tempting 29 ♗xe6 which seems to win a pawn and the exchange fails to ♖xc2!, and White is caught in a mating net. Now Black has to move off the c-file and White can win another pawn.

29 ..... ♖d8  
 30 ♗xe6 ♖a5?

30 ... ♖b5 is better. The text temporarily imprisons the Queen.

38 c4 0  
 1

38 ... bxc3 39 ♖xf8 ♖xf8 40 ♗e8 and the pawn queens as the black rook cannot now get to d1. Other moves allow c5.

△ △ △ △ △

William Hulme was the only player to go through the tournament undefeated. He plays some exciting and solid chess. Here is his effort against one of the other joint winners, Donald Holmes. Donald will unfortunately not be taking up his place in the Championship. He informs me he is turning "professional", aiming at an OTB Master title and teaching chess; a loss to our Association, but we wish him well. To the game.....  
 (The annotations are by William Hulme)

White: Donald Holmes  
 Black: William Hulme

Nimzo-Indian E32

1 d4 ♖f6  
 2 c4 e6  
 3 ♗c3 ♗b4  
 4 ♖c2 0-0  
 5 a3 ♗xc3  
 6 ♖xc3 b6  
 7 ♗g5 ♗b7  
 8 f3 h6  
 9 ♗h4 d5  
 10 e3 ♖bd7  
 11 cxd5 ♖xd5

12 ♗xd8 ♖xc3  
 13 ♗h4!

13 ♗xc7 ♖d5 14 ♗d6 ♖e3  
 15 ♖f2 ♖c2 16 ♖d1 = (Karpov).

13 ..... ♖d5  
 14 ♖d2!

14 ♗f2 c5 15 e4 ♖e7 16 ♗b5 ♖c6 17 ♖e2 ♖fc8 18 0-0 cxd4 19 ♖xd4 ♖c5 20 ♖c6 - Gurevic ½ ½ Polugaevsky New York 1989.

14 ..... c5

Preparing to harass the white King down the c or d-files.

15 ♗b5 ♖5f6  
 16 ♗xf6 ♖xf6  
 17 dxc5 ♖fd8+  
 18 ♖e2 ♖ac8  
 19 ♖c1 a6

19 ... ♖d5 20 c6 ♗a8 (20 ... ♖b5? 21 cxb7 ♖b2 22 ♖d1 ♖c1 23 ♖c1 and the white pawn can't be stopped) 21 a4 a6 22 ♗a6 ♖c6 23 ♖h3 and White is a clear pawn up.

20 ♗a4 bxc5

20 ... ♖d5! 21 c6 (21 b4 bxc5 22 ♗b3 ♖g5 gaining a tempo by hitting the g-pawn) ... ♗a8 22 ♗b3 ♖g5 23 g4 - unclear.

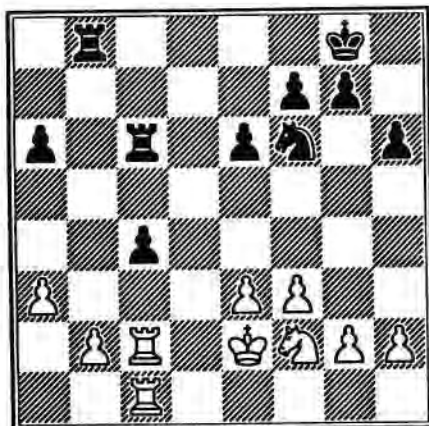
21 ♖h3 ♗c6  
 22 ♗xc6 ♖xc6  
 23 ♖f2 c4

24 ♖c2 ♜b8

Black must play actively!

25 ♖hc1

25 b4 a5 =.



25 ..... c3!!

26 b4

26 bxc3 ♜b3 27 a4 ♖d5 (27 ... ♜a3!?) 28 ♖d1 ♜a3 29 c4 ♖b6 =

26 ..... a5

27 ♖d3

27 ♜c3 ♜c3 28 ♜c3 axb4 29 ♜b3 ♖d5; 27 bxa5 ♖d5 28 ♖d1 ♜b3.

27 ..... ♖d5

28 bxa5

28 e4 ♖b4 29 axb4 axb4 30 ♜b1 b3 31 ♜cc1 b2 32 ♜c2 ♜a8 33 ♖b2 ♜b8 =.

28 ..... ♜b3

29 e4?!

29 ♖b4 ♜c5 30 ♖d5 exd5 31 ♖d3. I thought this line offered White more chances to play on for a win than the game.

29 ..... ♖c7

30 ♖e5 ♜c5

31 ♖d7 ♜c6

32 ♖e5

32 ♖b6?! ♜a3. I felt Black may be better here, although ♖b5 ♖d3 looks alright for White. At the worst, Black has the safe draw with 33 ♖d3 ♜a5 34 ♜c3 =.

Drawn by repetition.

△△△△△

In the battle of the Alistairs, it was the Maxwell clan who came out on top. "Maxi" essays 7 ♖g4 against the French Winawer, a move that Nigel Short says is a "nice move" and one variation that might refute the French Winawer. Let's see.....

White: Alistair Maxwell  
Black: Alistair Campbell

French Defence C18

1 e4 e6  
2 d4 d5  
3 ♖c3 ♖b4  
4 e5 c5  
5 a3 ♖xc3+  
6 bxc3 ♖e7

7 ♖g4 ♖c7

Another alternative in this position is castling, eg. 7 ... 0-0 8 ♖f3 ♖bc6 9 ♖d3 f5 10 exf6 ♜xf6 11 ♖g5 e5! as in Maliutin-Piskov, USSR CCC 1988.

8 ♖xg7 ♜g8

9 ♖xh7 cxd4

10 ♖e2 ♖bc6

11 f4 ♖d7

12 ♖d3 dxc3

13 ♖xc3

The alternatives here are many, ♜b1, ♖e3, ♖g3 and ♖xc3. "Maxi" plays the most popular.

13 ..... a6

Also possible is 13 ... ♖a5 14 ♖b5 ♖xb5 15 ♖xb5+ ♖ec6 16 ♖d2 as in Motwani-Levitt played in the Watson Farley & Williams tournament, London 1988.

14 ♖d2 ♜c8

15 h4 ♖f5

16 ♜h3 ♖a5?!

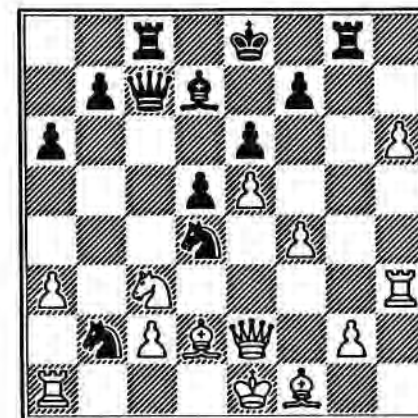
I think Black goes wrong here. 16 ... ♖ce7! followed by ♖h6 and ♖ef5 looks better.

17 h5 ♖c4?!

The ♖h6 move is a must as White's h-pawn becomes the winner!

18 h6 ♖b2

19 ♖e2 ♖d4



20 h7! ♜h8

21 ♖g4 ♖xc2+

22 ♖e2 ♖b5+

23 ♖xb5 axb5

24 ♖g7 ♖xa1

24 ♖xh8+ ♖d7

White winds things up rather nicely with ...

26 ♖xc8+! ♖xc8

27 h8 (♖) ♖c4+

28 ♖f2 ♖d4+

29 ♖g3 ♖xd2

30 ♖b8 ♖c3+

31 ♖g4 Resigns

1 0

△△△△△

In the following game, Graham Bird comes up with an opening innovation then he begins to drift; Alistair Campbell opens up the game and Graham punishes him for leaving the King in the centre.

White: Prof. Graham Bird  
Black: Alistair Campbell

French Defence C06

1 e4 e6  
2 d4 d5  
3 ♟d2 ♟f6  
4 e5 ♟fd7  
5 ♞d3 c5  
6 c3 ♟c6  
7 ♟ge2 cxd4  
8 cxd4 ♟b6

A more popular alternative is 8 ... f6; here Black tries to hamper White's activity by putting pressure on pawns at d4 and b2.

9 ♟b3!?

A new move. Prof Bird has always been a "free spirit" in the openings and this move looks as though it is well worth further study, especially if it is followed up with a recommendation at move 10.

9 ..... f6

Worth considering was 9 ... g6 with the idea of ♞g7, 0-0 and then f6!

10 f4

Very committal. I like the look of 10 ♟f4! A few possibilities 10 ... fxe5 11 ♟xe6 ♟xd4 12 ♟h5+ or 10 ... ♟dxe5 11 dxe5 ♟xe5 12 ♟h5+ and finally 10 ... ♟xd4

11 ♟xd4 fxe4 12 ♟h5+ ♟e7  
13 ♟f5!

10 ..... ♞e7  
11 ♟f1

Castling would be a mistake -  
11 0-0? fxe5 12 fxe5 ♟dxe5!

11 ..... a5  
12 a4 ♟b4  
13 ♟f3

The alternatives of 13 ♞b5 and ♞b1 also look attractive.

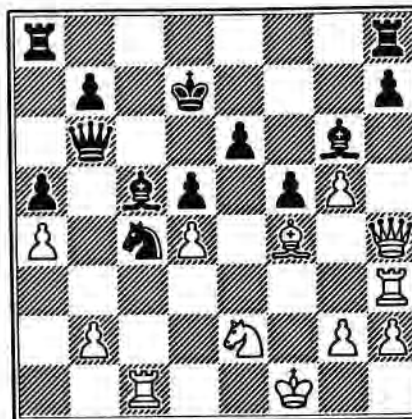
13 ..... ♟xd3+  
14 ♟xd3 ♟b8  
15 ♞d2 ♟c6  
16 ♟h3 f5  
17 ♟f2

Why not 17 ♟f1! Perhaps White was keeping the possibility of ♟ag1 and pawn g4 at some stage.

17 ..... ♞d7  
18 ♟f3 g5!

After 18 ... 0-0-0! and then g5!! Black's game is to be preferred. White's ♟h3, Queen and King look misplaced, while Black's pieces are well co-ordinated.

19 ♟h5+ ♟d8  
20 fxe5 ♟xe5  
21 ♟f1 ♞e8  
22 ♟h4 ♟c4  
23 ♞f4 ♞g6  
24 ♟c1 ♟d7  
25 ♟c5+! ♞xc5



26 b3! ♞xd4  
27 bxc4 e5  
28 ♟d3 dxc4  
29 ♟xc4 ♟b1+  
30 ♟c1 ♟ac8

With the black King in the centre of the board, White wraps the game up nicely with ...

31 ♟dxd4+! exd4  
32 ♟xd4+ ♟e7  
33 ♟e1+ ♟f8  
34 ♞d6+ ♟g7  
35 ♟e5+ Resigns  
1 0

△ △ △ △ △

Finally, I annotate a game by the joint winner of the tournament, Tom Thomson, who missed the theoretically winning position at move 13! Thankfully he did, as otherwise we would not have this interesting game!

White: Tom Thomson  
Black: Prof. Graham Bird

Grünfeld Defence D88

1 d4 ♟f6  
2 c4 g6  
3 ♟c3 d5  
4 cxd5 ♟xd5  
5 e4 ♟xc3  
6 bxc3 ♞g7  
7 ♞c4 0-0  
8 ♟e2 c5  
9 0-0 ♟c6  
10 ♞e3 cxd4  
11 cxd4

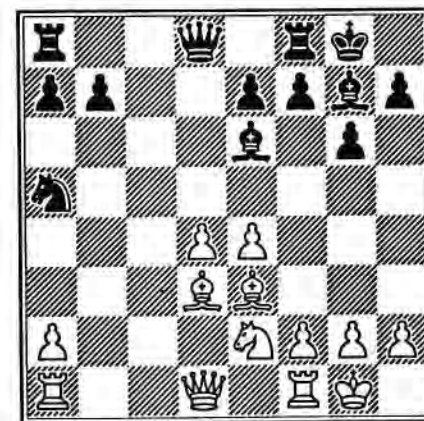
All seen many times before!

11 ..... ♟a5

It is more usual to play 11 ... ♞g4 12 f3 and then ♟a5.

12 ♞d3 ♞e6?

A mistake which Tom fails to punish.



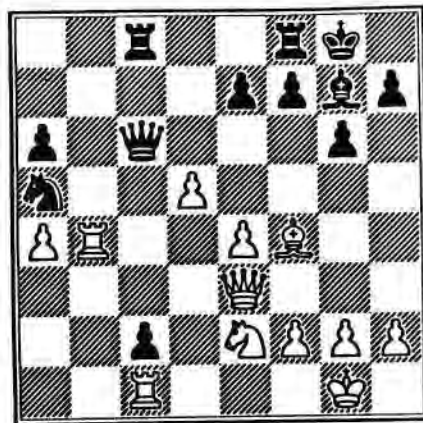


The refutation to 12 ... ♗e6 was known as far back as 1944! A game played between Sokolsky and Tolush in the Semi-Final 13th USSR Championship in Omsk. I was fortunate enough to essay the same line in the 1974-75 Scottish Championship against Allan Hislop.

It goes 13 d5! ♗xa1 14 ♖xa1 f6 15 ♗h6 ♖e8 16 ♗f4 ♗d7 17 e5 e6 (in Beecham - Hislop, Black played 17 ... a6? 18 ♖b1 ♗f5 19 ♗xf5 gxf5 20 ♖xf5 ♖h8 21 ♗e6, Black resigns) 18 dxe6 ♗xe6 19 ♗b5 ♗d7 20 exf6 ♖f7 21 ♗xd7 ♖xd7 22 ♗h3 ♖e6 23 f7 ♖ed8 24 ♖e1+ Black resigns.

Back to the game!

13	.....	a6
14	♖b4	b5
15	a4	♗c4
16	♗xc4	bxc4
17	♖ab1	♖ab8
18	♖c3	♖c8
19	♖b4	♖c7
20	♗f4	♖c6
21	♖e3	c3
22	♖c1	c2
23	d5	



23 ..... ♖fd8!  
24 h3

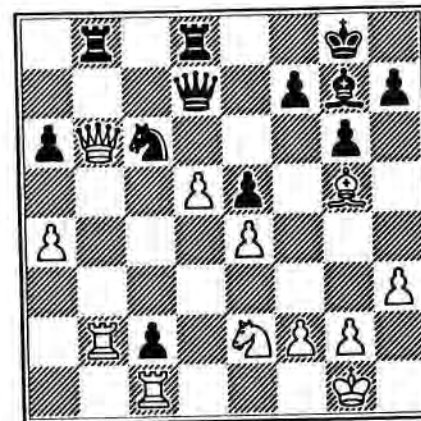
Not 24 dxc6?? ♖d1+ and mate next move.

24 ..... ♖d7  
25 ♖b6 e5?

A good alternative to 25 ... e5 was 25 ... ♗c6! 26 ♖c4 ♗e5 27 ♖xc8 ♖xc8 28 ♖xa6 (28 ♗d4 ♗d3!) ♖c4! 29 ♗xe5 ♖xa4 30 ♖b6 ♗xe5 31 ♖xc2 ♖xe4 and Black is well placed.

26 ♗g5 ♗c6  
27 ♖b2 ♖b8

Please send games (preferably annotated to Games Editor:  
George Pyrich,  
53 Dunnikier Road,  
Kirkcaldy,  
Fife, KY1 2RL.



28 ♗xd8!

White picks up a pawn, 2 rooks and a passed QP for his Queen. More than enough for the win!

28 ..... ♖xb6  
29 ♗xb6 ♗e7  
30 ♗c3 ♗h6  
31 ♖cxc2 ♖g7  
32 ♗c5 ♗c8  
33 ♖b4 ♖c7  
34 ♗b5! ♖d7

Black loses his Queen to 34 ... axb5 ♗f8+.

35 ♗c7 a5  
36 ♖b8 ♗f4  
37 ♗b5 ♗e7  
38 ♗d6 ♗xd5

Desperation! It was time to resign.

39 exd5 ♖f5  
40 ♗f8+ ♖f6  
41 ♖c6+ ♖g5  
42 ♗e7+ ♖h6

43 ♗d6 Resigns  
1 0

△ △ △ △ △

To those who go forward to the Championship, we wish them luck; to those who did not do so well, it must be remembered that there is no-one more likely to show us our shortcomings than our opponents!



Address Changes?

Members are asked to advise changes of address promptly to their opponents, the tournament secretary, the Scottish CCA Secretary and the Editor of the SCCA Magazine.

READ SCOTTISH CHESS

including  
Games and Positions  
annotated by  
PAUL MOTWANI, G.M.  
Endgame articles by  
COLIN McNAB, G.M.  
Test your Chess by  
RODDY McKAY, L.M.  
Feature articles by various authors

Q. How much does it cost?  
A. £6 per annum or £1.50 per copy.  
  
Q. How do I subscribe?  
A. Send your name, address and fee to Chess Suppliers (Scotland) Ltd.

## NEW BOOKS

by Alan Borwell

**Winning with the King's Gambit**  
by Joe Gallagher  
Figurine notation, paperback £13.99

This opening was very popular in the 19th century but has been neglected in Grandmaster chess until recently. It is now being used again with success and many new ideas have been introduced.

This book is a very useful addition to the series on specialist openings, with nearly 200 pages covering all of the main variations. There are 58 well-analysed games. Ideal for anyone looking to play exciting and creative chess!

**Secrets of Chess Tactics**  
by Mark Dvoretsky  
Figurine notation, paperback £14.99

Following his useful book on Chess Training, this Russian trainer has now produced this interesting insight into chess tactics. Its 275 pages are packed with ideas and there are questions and tests to assess your strengths and weaknesses.

Highly recommended by GM John Nunn as the "best book of 1992".



## Batsford

4 Fitzhardinge Street  
London, W1H 0AH.  
Tel. 071 486 8484

**Beating the Grünfeld**  
by Anatoly Karpov  
Figurine notation, paperback £12.99

World Champion Garry Kasparov has not been very successful with the Grünfeld Defence, particularly against the author of this excellent book.

Most of the principal variations are covered in depth, featuring 25 illustrative games with many others in the detailed notes.

There are original ideas and tips from the former World Champion on his approach to countering this popular defence.

**The Complete French**  
by Lev Psakhis  
Figurine notation, paperback £14.99

Another fine volume in the "Complete" series covering popular openings. Its 272 pages are packed with deeply analysed games in all major variations.

This book is an essential for all serious exponents of the French Defence (includes 1991 games references).

**Fischer-Spassky II**  
**The Return of a Legend**  
by Raymond Keene  
Figurine notation, paperback £9.99

This book celebrates the famous rematch, 20 years after Bobby Fischer became World Chess Champion when he defeated Boris Spassky in Reykjavik.

There is a good introduction, including all the Reykjavik games, followed by all 30 of the recent match in Serbia/Montenegro.

As it was released very soon after the conclusion, some of the games are not analysed in depth. However, they provide much interest and some glimpses of the genius of the legendary Bobby Fischer.

**Secrets of Rook Endings**  
by John Nunn  
Figurine notation, paperback £17.99

Over 300 pages specialising in all types of R+P v R endings written by one of the World's top endgame theoreticians.

Every move has been validated by computer database!

A useful reference work if you ever need to find the best moves in these notoriously tricky endings!

**Winning with the Bishops Opening**  
by Gary Lane  
Figurine notation, paperback £12.99

After the King's Gambit, we have the Bishop's Opening - a nice choice! Featuring selected games in all main variations, Gary Lane has produced another excellent and interesting book. Like the King's Gambit, the Bishop's Opening enables the e4 player to focus on one main opening in response to 1 ... e5.

**New Ideas in the Four Knights**  
by John Nunn  
Figurine notation, paperback £10.99

This revitalised opening has been transformed into a potent weapon in the repertoire of English GMs.

This book of 128 pages and 46 featured games contains detailed analyses and cross-references.

**Winning with the Petroff**  
by Anatoly Karpov  
Figurine notation, paperback £10.99

This defence has the reputation for being an ideal choice for Black to secure a draw against 1 e4. The ex-World Champion features some of the more aggressive ideas for Black and suggests that it can be used by attacking players!

Only 114 pages and 25 main games but containing plenty of new ideas.

**How to Play the King's Indian Attack**  
by Angus Dunnington  
Figurine notation, paperback £10.99

Specialising in 1 d3, this book considers all main replies and features 50 illustrative games. Demonstrates the key concepts and explains the theory for both White and Black.

Unlike some of the other books reviewed, I like the inclusion of a players' index of completed games.



## Batsford

4 Fitzhardinge Street,  
London W1H 0AH  
Tel. 071 486 8484

## THE OXFORD COMPANION TO CHESS

by David Hooper and Kenneth Whyld

This new second edition covers all aspects of chess from the laws and strategies to the representation of chess in philately, literature, art, theatre, films, etc.

Its 496 pages contain 580 chess diagrams, photographs etc.

The Companion is intended to provide an overview, with a historical coverage ranging from the origins of chess right up to the 1993 World Championship Cycle. There are 2600 entries arranged alphabetically with a network of cross-references.

This hardback book is beautifully reproduced and illustrated by Oxford University Press, price £25.00.

**Tactics in the Sicilian**  
by Gennady Nesis  
Figurine notation, paperback £12.99

This ambitious book endeavours to enhance readers' tactical awareness of this ever popular and dynamic defence (or attack!?)

With over 200 pages, its 60 selected games cover a wide range of variations and examples of many different "themes".

Worthy of in-depth study by Sicilian exponents, particularly in the Dragon, Scheveningen, Sozin and Paulsen variations.

## CHESS & BRIDGE LTD

369 EUSTON ROAD, LONDON NW1 3AR

### CADOGAN CHESS BOOKS

**Bobby Fischer**  
**The \$5m Comeback**  
by Davies, Pein & Levitt  
Figurine notation, paperback £8.99

Published by Cadogan Chess, this book covers the rematch between Fischer & Spassky in Autumn 1992.

There is a comprehensive 50-page introduction, with each of the 30 games of the match introduced and then well annotated.

An excellent companion to the books produced on the original World Championship match 20 years earlier!

**Mastering the Endgame: Volume 2**  
by Shereshevsky & Slutsky  
Figurine notation, paperback £14.95

This second volume covers endings derived from the Q Gambit, Indian Defence, English Opening and other Closed Games.

They are not arranged by opening classification but according to pawn formations, eg. Moroczky Bind, isolated central pawn, blocked pawn centres, majority/minority structures.

Spacious print, excellent diagrams and good index.

**Rate your Endgame**  
by Mednis & Crouch  
Figurine notation, paperback £9.95

An attractive cover and excellent presentation are features of this 240-page book, which is based on the 1970 classic "Practical Endgame Lessons" by Mednis.

Practical guidance is given on how to handle endgames and readers can rate their skill through a series of over twenty exercises.

Various types of endgames are included and it would be of great assistance to young players wishing to develop their technique.

**Bobby Fischer**  
**His Approach to Chess**  
by Elie Agur  
Figurine notation, paperback £12.95

This is a study of the preparation, tactical alertness and technique of, arguably, the finest chess player of all time.

Like Capablanca before him, Fischer is the master of converting small advantages into winning positions. One section of the poetry of empty squares, I feel is very appropriate! Highly recommended.



S1 EDITRICE

### CORRESPONDENCE CHESS YEARBOOKS & OPENINGS MONOGRAPHS

published by S1 Editrice,  
Via Marsala 45,  
40126 Bologna,  
Italy.

The sixth and seventh editions of the excellent CC Yearbooks have been published since our last Magazine and each contain 350 correspondence games. The Editors indicate that the number of games to be included in 1993 will be increased, along with more theoretical articles.

The games are arranged using Informator Opening References and many are analysed in depth. The sixth edition contained Theoretical articles on the Sicilian Dragon (B76) and Blumenfeld Gambit (E10). The ICCF Rating List is reproduced (top 3000 players) for ease of reference.

In addition to the CCYB's, the publishers are producing some excellent books in a monographic series, featuring specific openings. So far the Kings Indian Defence (Sämisch), Queens Gambit (Keres Defence), Ruy Lopez (Birds), Sicilian (Najdorf) and Caro Kann (4 ... ♘f6) have been covered and more are planned.

Subscribers to the CCYB can obtain these openings monographs at a 25% discount, but their cover price ranges between Lire 15.000/17.000 (approx £7-£8 each). There are 100-125 pages in each, with approx 100 completed games, well indexed under specific lines.

*Any reader who may be interested in subscribing to CCYB (approx £15 per issue) or the opening monographs, should let me know and I will endeavour to set up an appropriate arrangement with the Italian publishers. CCYB is also available on disks compatible with the ChessBase program [Editor]*

#### WHY NOT TRY INTERNATIONAL POSTAL CHESS?

You could start with a couple of games in friendly international matches. Just let Colin Macgregor know and he will arrange!

♦ Mr. C.A. Macgregor, Top Flat Left, 9 Argyle Street, Paisley, PA1 2ET  
☎ 041-887-6619



## GAMES SECTION

Selected by  
**GAMES EDITOR**  
George D. Pyrich,  
53 Dunnikier Road,  
Kirkcaldy,  
Fife, KY1 2RL.

Please send games  
(preferably  
annotated)  
to Games Editor)

Whilst attending the ICCF Congress at Graz, Austria, last September, I had the privilege of meeting one of the great veterans of Correspondence Chess, Sture Nyman from Falkenberg, Sweden, a participant in three World Championship Finals (including 4th place in the 4th Final in 1965). Following our meeting, Sture kindly sent me two annotated games played in an ICCF Thematic Tourney. (Notes based on Sture's comments)

**White:** Finn Gasseholm (DEN)

**Black:** Sture Nyman (SWE)

Benko Gambit A57

1 d4 ♘f6  
2 c4 c5  
3 d5 b5  
4 cxb5 a6

5 bxa6

Most commonly played but 5 ♘c3 and 5 b6 are acceptable alternatives. The game Wiedersich (Ger) - Nyman from the same event went 5 ♘c3 axb5 6 e4 b4 7 ♘b5 d6 8 ♙f4 ♘a6 9 ♙c4 g6 10 e5 ♘h5? (better 10... dxe5 11 ♙xe5 ♙g7) 11 ♗a4! ♙d7 12 e6 fxe6 13 dxe6 ♙c6 14 ♙d5 ±

5 ..... ♙xa6  
6 ♘c3 d6  
7 ♘f3 g6  
8 g3 ♙g7  
9 ♙g2 0-0

The other plan is to defer castling and immediately pressure the d5 pawn with ♘bd7/♘b6 and ♙c4.

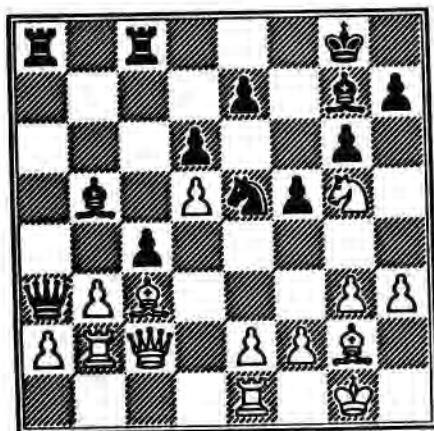
10 0-0 ♘bd7  
11 ♗c2 ♗a5  
12 ♖ab1 ♖fb8  
13 ♖e1

White has chosen an unusual set-up for his rooks. It was better to play this rook to d1 on move 12 and defer development of the

Queen's rook, in preference to h3 to stop Black's next.

- |    |       |      |
|----|-------|------|
| 13 | ..... | ♗g4! |
| 14 | ♗d2   | ♗ge5 |
| 15 | ♗xe5  | ♗xe5 |
| 16 | b3    | c4   |
| 17 | h3    | ♖a3  |
| 18 | ♗e4   | ♗c8  |
| 19 | ♗c3   | ♗b5! |
| 20 | ♗b2   | f5   |
| 21 | ♗g5!  |      |

A surprise. I had expected 21 ♗xe5 ♗xe5 22 ♗c3 (better for Black).



- |    |       |      |
|----|-------|------|
| 21 | ..... | ♗d3! |
| 22 | ♗xg7  |      |

Obviously 22 exd3 cxd3 pinning the Bishop is bad for White.

- |    |       |       |
|----|-------|-------|
| 22 | ..... | ♗xe1  |
| 23 | ♖d2   | ♗xg7  |
| 24 | ♖d4+  | ♗g8   |
| 25 | ♗e6   | ♖xb2! |
| 26 | ♖xb2  | c3    |

- |    |     |    |
|----|-----|----|
| 27 | ♖c1 | c2 |
| 28 | ♗h2 |    |

28 ♖h6 looks plausible but meets 28 ... ♗f3+! 29 ♗xf3 c1=♖+ winning.

- |    |         |      |
|----|---------|------|
| 28 | .....   | ♗d7  |
| 29 | ♗d4     | ♗xa2 |
| 30 | ♗c6     | ♗xc6 |
| 31 | ♖xe1    | ♗d7  |
| 32 | ♖c1     | ♗a1! |
| 33 | Resigns |      |

△ △ △ △

The corresponding game was also of interest.

White: Sture Nyman (SWE)  
Black: Finn Gasseholm (DEN)

Benko Gambit A57

- |    |      |      |
|----|------|------|
| 1  | d4   | ♗f6  |
| 2  | c4   | c5   |
| 3  | d5   | b5   |
| 4  | cxb5 | a6   |
| 5  | bxa6 | ♗xa6 |
| 6  | ♗c3  | d6   |
| 7  | ♗f3  | g6   |
| 8  | e4   | ♗xf1 |
| 9  | ♗xf1 | ♗g7  |
| 10 | g3   | 0-0  |
| 11 | ♗g2  | ♗bd7 |
| 12 | ♗e1  | ♗g4  |
| 13 | ♗e2  | ♖a5  |
| 14 | ♗c2  |      |

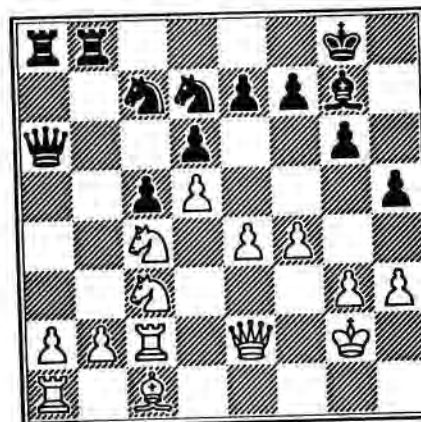
I think that this is necessary here and better than 13 ♖c2. (Probably best is 14 ♗g5 ♗fe8 15 ♗c1! ♗b8 16 h3 ♗e5

17 ♗xe5 ♗xe5 18 ♖d3 ± Spassky - Vaganian, Linares 1985).

- |    |       |      |
|----|-------|------|
| 14 | ..... | ♗fb8 |
| 15 | ♗d2   | h5?! |

15 ... ♗gf6 was more prudent.

- |    |     |      |
|----|-----|------|
| 16 | h3  | ♗gf6 |
| 17 | ♖e2 | ♗e8  |
| 18 | f4  | ♗c7  |
| 19 | ♗c4 | ♖a6  |



- |    |     |  |
|----|-----|--|
| 20 | e5! |  |
|----|-----|--|

The thematic breakthrough.

- |    |       |      |
|----|-------|------|
| 20 | ..... | ♗b4  |
| 21 | b3!   | dxe5 |
| 22 | fxe5  | ♗xb3 |
| 23 | axb3  | ♖xa1 |
| 24 | ♗b2!  |      |

Consolidating the White position.

- |    |       |      |
|----|-------|------|
| 24 | ..... | ♖a6  |
| 25 | ♖e4   | ♖b7  |
| 26 | ♗d2   | ♗b8? |

The defensive 26 ... ♗f8 was required. 26 ... ♖xb3? lost immediately to 27 d6.

- |    |       |      |
|----|-------|------|
| 27 | e6    | ♗f6  |
| 28 | exf7+ | ♗xf7 |
| 29 | ♗e5+  | ♗g8  |
| 30 | ♖xg6  | e6   |

The d5 pawn was untouchable - 30 ... ♗fxd5 31 ♖f7+.

- |    |      |       |
|----|------|-------|
| 31 | ♗c6! | ♗f8   |
| 32 | ♗e7+ | ♗h8   |
| 33 | ♗e4! | ♗cxd5 |

33 ... exd5 34 ♗xf6 d4+ 35 ♗e4 ♗f6 36 ♖xh5+ ♗h6 37 ♖f5 was no better.

- |    |       |         |
|----|-------|---------|
| 34 | ♗xd5  | ♗xe4    |
| 35 | ♖h6+! | ♗g8     |
| 36 | ♖xe6+ | ♗h8     |
| 37 | ♗xg7+ | Resigns |

△ △ △ △ △

Next, one of our own internationalists, Simon Gillam, provides annotations to a hard-fought struggle played in a recent International.

John Kellner Memorial, Section B, 1989-92

White: S. Gillam (SCO)  
Black: K Dehmelt (USA)

Ruy Lopez - Zaitsev C92

- |   |     |     |
|---|-----|-----|
| 1 | e4  | e5  |
| 2 | ♗f3 | ♗c6 |
| 3 | ♗b5 | a6  |

4 Δa4 ♖f6  
 5 0-0 Δe7  
 6 ♖e1 b5  
 7 Δb3 0-0  
 8 c3 d6  
 9 h3 Δb7  
 10 d4 ♖e8  
 11 ♖bd2 Δf8  
 12 a3

The main line is 12 a4, as played in several Timman v Karpov and Kasparov v Karpov match games in 1990. For example, 12 ... h6 13 Δc2 exd4 14 cxd4 ♖b4 15 Δb1 c5 16 d5 ♖d7 17 ♖a3 in KvK (Lyon) games 20 and 22.

As I was in semi-retirement from chess, reading fewer chess magazines, I wanted to reduce the risk of running into a Karpov TN. 12 a3 was played in several games in the mid-80s, but has gone out of fashion.

12 ..... g6  
 13 Δa2 Δg7  
 14 d5 ♖e7  
 15 c4 ♖h5?

This is new to me. The only previous game I could find went instead 15 ... c8 16 b4 bxc4 17 dxc6 ♖xc6 18 ♖xc4 ♖d4 19 Δg5 h6 20 Δxf6, with a good game for White.

16 b4 ♖f4  
 17 ♖f1 bxc4  
 18 Δxc4 c6  
 19 dxc6 ♖xc6

If 19 ... Δxc6 20 Δxf4 exf4 21 ♖c1 looks fine for White. The same plan would also have been reasonable against 19 ... ♖xc6.

20 Δb2 ♖c8  
 21 ♖b3 ♖f8  
 22 ♖ad1 ♖e7  
 23 ♖g3 ♖h8  
 24 a4?

The white position looks pretty, but after this I am not sure where it is going. The follow-up of b4-b5 is difficult to achieve because of the reply ... ♖a5, while Black has the obvious plan of hitting e4. Instead 24 ♖d2 looks better, planning to play down the d-file.

24 ..... f5  
 25 Δd5?! ♖xd5  
 26 exd5 ♖d8  
 27 b5 axb5  
 28 axb5 Δa8

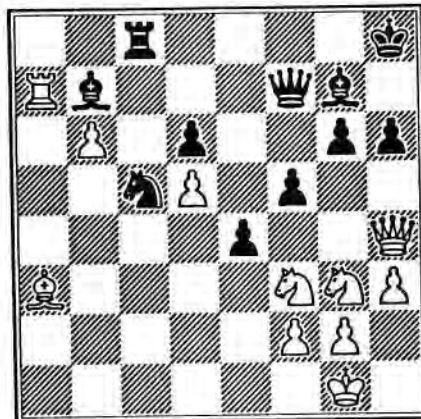
I now realised that things have not gone well, with potentially weak b and d pawns. I would like to play ♖f3-d4-c6, but now 29 ♖d4 ♖b7 30 ♖c6 ♖xc6 31 dxc6 ♖xc6. Alternatively, I could try 29 Δa3, to pin the d-pawn, with the possible continuation 29 ... ♖d7 30 ♖xe5 dxe5 31 Δxf8 Δxf8 32 ♖xe5 Δd6 33 ♖e3 ♖c5 34 ♖b2+ ♖g8 35 ♖f6! with attacking chances. My chosen move also threatens the cheapo on e5, but it is easily answered.

29 ♖a3? ♖d7

30 b6 ♖b7  
 31 ♖c1 h6  
 32 ♖b4 ♖xc1  
 33 ♖xc1 ♖c8  
 34 ♖a1 ♖c5  
 35 ♖a7

I was not convinced that I would gain anything with this rook on the 7th, but it seemed the best indirect protection for the d-pawn.

35 ..... Δb7  
 36 Δa3 ♖f7  
 37 ♖h4 e4



If instead 37 ... ♖xd5, then 38 ♖e7 with plenty of play for the pawn. However, the move played looks winning for Black, as 38 ♖g5 ♖xd5 39 Δb2 ♖g8 would lead nowhere.

38 Δxc5 dxc5

If 38 ... ♖xc5 39 ♖d8+ ♖h7 40 ♖b8 keeps White alive. In this line, I was pleased to see that in the endgame after 40 ... exf3

41 ♖xb7 ♖xb7 42 ♖xb7 ♖xd5 43 ♖d7 fxg2 44 ♖xg2 White has a pawn down, but has all the winning chances. However, the game move looks a killer; surely the knight must retreat, allowing 39 ... ♖xd5 with a clear advantage to Black.

39 ♖e5!7 Δxe5  
 40 ♖xh6+ ♖g8  
 41 ♖xb7 ♖xb7  
 42 ♖xg6+ Δg7  
 43 ♖xf5

This is as far as I had analysed when I planned the sacrifice 6 moves earlier. White only has 3 pawns for the rook, but the knight is well-placed and combines well with the Queen.

43 ..... ♖f8  
 44 g4 ♖f6?

The immediate 44 ... ♖xf5 would gain 1 or 2 tempi on the game after 45 ♖xf5 ♖xb6 46 ♖xe4. However, I could try 45 gxh5, when 45 ... ♖xd5 46 ♖e8+ draws, while 45 ... ♖f7 46 d6! is rather vicious.

45 ♖e8+ ♖h7  
 46 ♖xe4 ♖h8

If 46 ... ♖xb6 47 ♖e7+ ♖h8 48 g5 and the threat of ♖h4+ is winning a piece.

47 g5

I was reluctant to allow Black to give back the exchange, but I could see nothing else clear. For example 47 ♖e8+ (47 ♗e7 ♗xb6 48 g5 ♗d4 49 ♖h4+ ♖g7 looks OK for Black) 47 ... ♖h7 48 ♗e7 (48 d6 ♖xb6 49 d7 ♗f8) 48 ... ♗f8! (48 ... ♗f8 49 ♖h5+ ♗h6 50 ♖g6+ wins, or 48 ... ♖xb6 49 ♖g8+ ♖h6 50 g5+ ♖xg5 51 ♖xg7+ wins) 49 d6 ♖xb6 50 d7 ♖b1+ and the white King is in trouble.

47 ..... ♗xf5

Black has to return the exchange. If 47 ... ♗f8 48 ♗e7 with ♖h4+ to follow. Or 47 ... ♗xb6 48 ♖e8+ ♖h7 49 ♗e7 ♖b8 50 ♖h5+ wins more. In this latter line, the counter-attack fails after 49 ... ♗b1+ 50 ♖g2 ♗g1+ 51 ♖xg1 ♖b1+ 52 ♖g2 ♖e4+ 53 f3 ♖e2+ 54 ♖g3 ♗e5+ 55 ♖g4 heading for safety on e6.

48 ♖xf5 ♖xb6  
49 h4 ♖d8

Attempts to roll the c-pawn are unsuccessful, eg. 49 ... ♖b4 50 h5 c4 51 h6, or 49 ... c4 50 ♖c8+ ♖h7 51 ♖xc4.

50 ♖e6

It looked as if I might have been able to head for a Q and P ending by 50 h5 c4 51 h6 ♗d4 52 g6 c3 53 g7+ ♗xg7 (not 53 ... ♖g8 54 ♖g6) 54 hxg7+ ♖xg7. However if 50 h5 ♖f8! intending

... ♗d4 would have secured the draw.

50 ..... ♗d4!

If 50 ... c4 51 d6 wins in all variations, eg. 51 ... ♗f8 52 d7 ♖e7 (52 ... c3 53 ♖e8 c2 54 ♖xd8 c1=♖ 55 ♖g2 ♖c6+ 56 f3 wins) 53 ♖d5 ♖d8 54 ♖e5+ ♖h7 55 ♖e8 ♗e7 56 ♖f7+ ♖h8 57 g6 wins. Or 51 ... ♗d4 52 d7 ♗b8 53 g6 ♖xh4 54 ♖e8+ ♖g7 55 ♖f7+ ♖h6 56 ♖h7+ ♖g5 57 ♖xh4+ and the g-pawn queens.

51 ♖g2

Black's last move would allow him to answer 51 d6 with 51 ... ♖f8, so I have to waste a tempo to deal with the threat on f2.

51 ..... ♖f8

I was hoping for something like 51 ... c4 52 d6 c3 53 ♖e7 ♖a8+ 54 f3 ♖a2+ 55 ♖g3 ♖f2+ 56 ♖g4 ♖g2+ 57 ♖h5 ♖xf3+ 58 ♖h6, winning. However, even in this line, Black can vary with 52 ... ♖a8+, when there is nothing clear.

52 f3 ♖f4  
53 ♖e8+

Now 53 d6 could be answered by 53 ... ♖xh4 threatening an unpleasant check on f2.

53 ..... ♖g7

My last hope was that he would choose to defend by 53 ... ♖h7 54 ♖e7+ ♗g7, when I get winning chances with 55 d6.

54 ♖e7+ ♖g6  
55 ♖e8+  
Draw agreed

There is nothing better than the perpetual. After a Queen swap, the Bishop would hold the pawns with little difficulty.

△ △ △ △ △

Now, Richard Cochrane provides something a little lighter, with a nice attacking game from one of our Premier events. Annotations are provided by Richard.

SCCA Premier "C" 1992

White: R. Cochrane  
Black: W. Harper

Caro Kann Defence,  
Fantasy Variation B12

1 e4 c6  
2 d4 d5  
3 f3

The Fantasy Variation, as used by Smyslov in his heyday.

3 ..... e6

Black adopts the soundest line, his two main alternatives being 3 ... dxe4 and 3 ... g6.

4 ♗e3

This is the most aggressive move for White, which offers a pawn sacrifice.

4 ..... dxe4  
5 ♗d2 exf3  
6 ♗gxf3 ♗f6  
7 ♗c4 b5

Until this move, the game had followed theory, but now Black goes his own way. His plan of kicking the knight around with his pawns seemed too loosening but I couldn't find any immediate way to exploit it.

8 ♗ce5 ♗d5  
9 ♗d2 f6  
10 ♗d3 ♗d6  
11 ♗f2 0-0  
12 ♗e4 ♗a6!?

An interesting move, intending to exchange off his less effective Bishop.

13 ♗d3 ♗f4?

But this inconsistent move leads to trouble. Better would have been 13 ... b4 14 ♗xa6 ♗xa6 15 ♖e2 ♗ac7 to guard the e6 pawn), when 16 ♖c4 is unclear. After his move, Black is troubled by the (now) poor placing of his a6 Bishop.

14 ♗xf4 ♗xf4  
15 ♖e2 ♗e8  
16 0-0 e5

17 g3 Δh6

To be considered by Black was 17 ... exd4 18 gxf4 f5, but after 19 Qf5 fxe4 20 Qh5 h6 (20 ... exd3 21 Qxh7+ Qf8 22 Qh8+ Qe7 23 Qxg7+ Qd6 24 Qf7+) 21 Δxe4 hxg5 (as good as anything) 22 Δh7+ Qf8 23 fxg5+ Qe7 24 Bae1+ Qd7 25 Δf5+ followed by Bxe8, Black is being shredded.

18 dxe5 fxe5

18 ... Qb6+ at once might have been possible, when White's King might be more exposed on the long white diagonal, if the a6 Bishop could get back into the game.

19 h4!

This marks the beginning of a very strong attack. In addition to giving the g5 square to his knights, White gains a safer spot for his King on h2.

19 ..... Qb6+  
20 Qh2 Qe3

Black relied on this move to solve his problems and give him time to develop his queenside, but White's advantage in development simply becomes more pronounced.

21 Qxe3 Δxe3  
22 Bae1 Δb6

22 ... Δh6 may have been better, but after 23 Qd6 Bxe6 24 Qxe5 Bxd6 (The try 24 ... Qd7 25 Qxd7 Bxd6 to clear his back rank fails to 26 Qc5 when the a6 Bishop [remember him?] can't go back to c8 and so is lost) 25 Qf7 Bf8 26 Qxh6+ Qf8 27 Δxh7 with an extra pawn and a healthy king-side majority, White has a clear advantage.

23 Qeg5 g6

23 ... h6 24 Δh7+ Qh8 (24 ... Qf8 25 Qxe5+ Qe7 26 Qef7+ +-) 25 Qxe5! (threat Qg6++) 25 ... hxg5 26 Qf7+ Qxh7 27 Qxg5+ Qg6 28 Bxe8 Δb7 (to try and release the knight) 29 Bff8! (At this point, I was reminded of a Tal-Fischer game from a Candidates Tournament, but I can't remember which one) 29 ... Δc7 30 Be6+ Qh5 31 Qh3! +-

24 Qxe5

White regains his pawn and with five pieces threatening the black King, something has to give.

24 ..... Δa5  
25 Be4 Δb4!

A good try. Since 26 Bxb4 Bxe5 is not clear, Black is able to guard his sensitive e7 and f8 squares.

26 Qef7 Bxe4  
27 Qh6+! Qh8

27 ... Qg7 28 Bf7+ Qxh6  
29 Qxh7++.

28 Δxe4 Qd7  
29 Δxc6

Seemingly fatal, due to 29 ... Bd8 30 Qhf7+. However, Black has a last throw of the dice.

29 ..... Bc8!??

Now if 30 Δxd7 Bxc2+ 31 Qh3 Δb7 32 Bf7 Δg2+ 33 Qg4 Bc4+ 34 Bf4, White should win, but I felt uncomfortable about my King position in this line. As it turned out, I had a safer, and more elegant, win. Indeed Black's play from now on is forced and I worked out the winning line to the point of Black's resignation and beyond, but I thought sending an 11-move conditional was a bit too vicious!

30 Bf7! Qf8  
31 Bxa7!

Again the a6 Bishop comes back to haunt Black. Here the trapping of the piece forces Black's hand.

31 ..... Bxc6  
32 Qgf7+ Qg7  
33 Qe5+ Bc7

First point: 33 ... Qxh6 34 Qxc6 hitting both Bishops, leaves White the exchange and 2 pawns ahead.

34 Bxc7+ Qxh6

And now the second point...

35 Qg4+ Qh5  
36 Qf6+ Qh6  
37 Qg8+! Qh5

Black's King staggers back and forth on the h-file, like a boxer trapped on the ropes, reeling under blow after blow from White's knight.

38 Qh3!!

Point 3: Closing the net round the black King. To use another boxing analogy, at this point, the towel came in from Bill's corner to save his position from any further punishment. He played...

38 ..... Δc8+

How ironic, after all the problems that this piece caused, that it is the last black piece to move.

Black resigned

Without waiting for my reply. The final point of White's combination (begun with 30 Bf7!) comes after 38 ... g5 39 g4+ Qg6 40 h5++! An unusual and very pleasing pure mate.

Δ Δ Δ Δ Δ

**QUARTETS/HANDICAP**

Entries can be made at any time to Alan Hind. New pairings will be arranged when there are sufficient new players to do so.



Next, our top board in the NATT 3, Andy Muir, displays some of the fine play which has enabled him to achieve the excellent score of 7/9 against a very strong field.

Annotations by Andy.

3rd North Atlantic Team Tournament

White: Dag Orseth IM (2495)  
(NOR)  
Black: Andrew Muir IM (2540)  
(SCO)

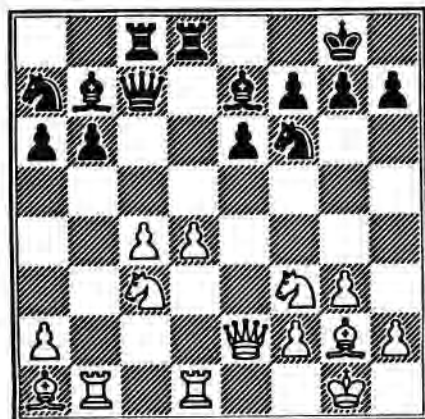
Reti Opening A14

1	♖f3	♗f6
2	g3	d5
3	♗g2	e6
4	0-0	♗e7
5	c4	0-0
6	b3	b6
7	♗b2	♗b7
8	e3	c5

This tournament was an unusual one for me opening-wise. I had four Nimzo-Indians as white and three Reti openings as black! In order to test out new opening ideas, I varied in each game.

Against Mike Thomas (Wales), I played here 6 ... c5 7 ♗b2 ♗c6 8 e3 d4 9 exd4 cxd4 10 ♞e1 ♞e8 11 d3 ♗c5 12 ♗bd2 h6 13 a3 a5 14 ♗e5 ♗xe5 15 ♞xe5 ♞c7 16 f4 ♞b8 17 ♞e2 ♗d7 18 ♞h5 ♗f6 19 ♞e5 ♗d7 - draw by repetition.

9	♞e2	♗c6
10	♞d1	♞c7
11	♗c3	dxc4
12	bxc4	a6
13	♞ab1	♞ab8
14	♗a1	♞fd8
15	d3	♗a7
16	d4	cxd4
17	exd4	♞bc8?



This was my experimental idea to attack the c-pawn. I. Sokolov then recommends 18 ♞b2 but then 18 ... ♗d7 and 19 ♗f6 looked good. 17 ... b5 is better. My opponent found a much stronger move.

18 d5! exd5

If 18 ... ♞xc4 19 ♞xc4 ♞xc4 20 ♗e5 and ♞xb6±.

19	♗xd5	♗xd5
20	cxd5	♗xd5
21	♗d4!!	

Not 21 ♞xa6 with equality as I expected. Now 21 ... ♗xg2

22 ♗f5 ♗f8 23 ♞g4 is too strong so...

21	.....	♗f6
22	♗f5!	♗c4

Forced. If 22 ... ♗xa1 23 ♗e7+.

23	♞e3	♞e8
----	-----	-----

Again 23 ... ♗xa1 24 ♗e7+.

24	♞xb6	
----	------	--

Calmly winning back the pawn. White stands better due to the poor black knight on a7.

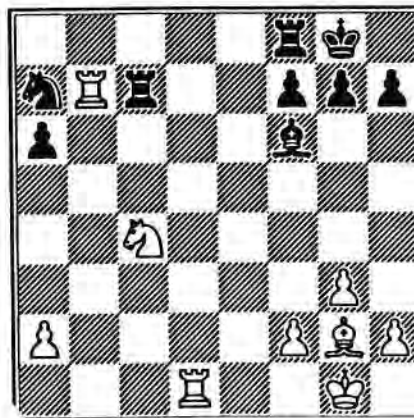
24	.....	♗xa1
25	♞xc7	♞xc7
26	♗d6!	♞f8

Forced because of back rank problems.

27	♗xc4!	
----	-------	--

27 ♞xa1 is less accurate.

27	.....	♗f6
28	♞b7	



This position is uncomfortable for Black. If 28 ... ♞xb7 29 ♗xb7 wins the a-pawn.

28	.....	♞fc8
29	♗e3	♗b5!

I have to activate the knight despite what follows.

30	♗d5	♞xb7
31	♗xf6+	gxf6
32	♗xb7	♞c2
33	♞d7!	

Not 33 ♗xa6 ♗c3 =.

33	.....	♞xa2
34	♗d5	♞c2
35	♞xf7!	

35 ♗xf7+ ♞f8 36 ♗b3 ♞c7 is equal.

In this position, White is threatening deadly discovered checks so I must keep attacking the Bishops along the a2-g8 diagonal, and be able to maintain the attack. If now 35 ... ♗c3? 36 ♗e6 ♞e2 37 ♗c4 ♞e4 38 ♗b3 ♞b4 39 ♞b7+ wins. I must decide between 35 ... ♞d2 and 35 ... ♞c5. The situation with the Bishop on a2, b3, d5, e6 doesn't make much difference to my rook moves but I must not allow ♗c4 and then play ♞c2 eg. 35 ... ♞d2 36 ♗c4 ♞c2? 37 ♞c7+! (a) 37 ... ♞f8 38 ♞c6 wins because of the double threat of 39 ♗xb5 and 39 ♞xf6+ ♞ moves 40 ♞f4 and the ♗ on c4

stops the a-pawn; (b) 37 ... ♖h8  
38 ♖xh7+! ♗xh7 39 ♜d3+ ♗g7  
40 ♜xc2 a5 41 ♗f1 ♜c3 42 ♗e1  
a5 43 ♗d2 and wins.

35 ..... ♜c5!!  
36 ♜a2!

Not the immediate 36 ♜e6?  
♜d4! 37 ♖xf6+ ♗g7 38 ♖f7+  
♗g6 39 ♖e7 ♗f6.

36 ..... ♜c2!

Again 36 ... ♜c3 37 ♖c7+ wins.

37 ♜e6 ♜e2!

If now 38 ♜c4 ♜e4! 39 ♖c7+  
♗h8! 40 ♖xh7+ ♗xh7 41 ♜d3  
♗g7 42 ♜xe4 a5 43 ♜c2 ♜c3  
44 ♗f1 a4 and drawn. Because  
my rook was captured on e4 and  
not c2, White must lose a vital  
tempo on 43 ♜c2 - see note (b)  
before my 35th move.

38 ♖xf6+ ♗g7  
39 ♖f7+ ♗g6  
40 ♜c4?

40 ♜b3 ♖b2 41 ♜c4 was trickier.  
Now I can force a draw.

40 ..... ♜e4!  
41 ♜d5 ♜d4  
42 ♜a2 ♜a4

I now attack along the 4th rank.

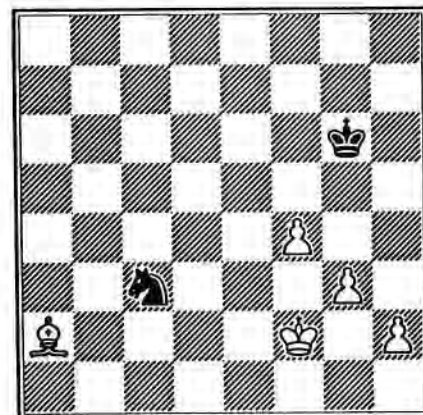
43 ♜e6 ♜e4  
44 ♜f5+

White has nothing better.

44 ..... ♗xf7  
45 ♜xe4 a5!

45 ... h6 loses to 46 ♜c2.

46 ♜xh7 a4  
47 ♜c2 a3  
48 f4 ♜c3  
49 ♗f2 a2  
50 ♜b3+ ♗g6  
51 ♜xa2



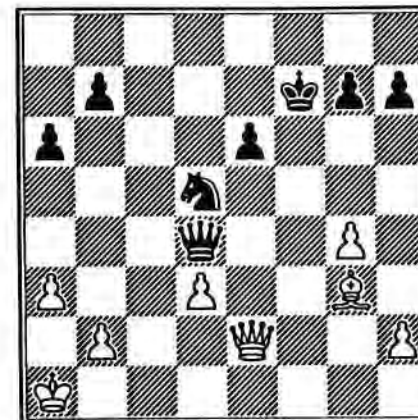
If White can force two of his  
pawns to the 5th rank, then he  
wins, but my knight can just get  
back to stop the pawns in time,  
eg. 51 ... ♜xa2 52 g4 ♜c3 53 h4  
♜d5 54 ♗g3 ♜e3! (54 ... ♜f6??  
55 h5+ ♗h6 56 ♗h4 N-moves  
57 g5+ wins) 55 h5+ ♗h6  
56 ♗h4 ♜g2+ =.

50 ½ ½

After the opening stages of my  
games I thought I might score  
about 50% but the following is  
another game which turned in my  
favour:

Position after 33 ... ♗d4.

A. Muir (Scotland)



J.M. Masurel (France)

I was expecting a draw here with  
a perpetual check of some sort  
possible but my opponent played  
too hard for a win.

34 g5!?

This threatens 35 ♗h5+ and  
35 ♗xh7 so I am obliged to  
weaken my ♗ position. However,  
the g-pawn might be weak later.

34 ..... g6  
35 ♗f1+! ♗e8!

If 35 ... ♗e7 36 ♗h3 ♗xd3??  
37 ♜d6+ so I have to play the

passive 37 ... ♗g7. Another  
reason for 35 ... ♗e8 is to free e7  
for my knight. Then my ♗ goes  
to d5 with perpetual check  
possibilities on h1 and d5.

36 ♗c1 ♜e7!  
37 ♗c3

If 37 ♗c7 ♗d5! =.

37 ..... ♗g1+

No point strengthening his pawn  
structure with 37 ... ♗xc3?

38 ♗a2 ♗g2  
39 ♗d4?

Better 39 ♗a1 ♗h1+ =. Now  
White has a prospectless ending.

39 ..... ♗d5+!  
40 ♗xd5

If 40 ♗c4 b5!

40 ..... exd5

It was difficult to decide between  
this and 40 ... ♜xd5, but after  
40 ... ♜xd5 41 ♗b3 b5 42 d4  
♗d7 43 ♗c2 ♗c6 44 ♗d3, it is  
hard for my King to penetrate. If  
here 44 ... ♜b6 45 ♗e4, White  
has a direct route e5-f6-g7 to my  
pawns. I worked this out to a  
draw! With 40 ... exd5 and ♜c6 I  
have complete control of all the  
white King entry squares.

41 ♗b3 ♜c6  
42 ♗c3 ♗d7

43 ♖f4?

I felt ♖d2 to head off my King was better.

43 ..... ♖e6  
44 h3 ♖f5  
45 ♗e3 b5!

I can't break through with my King but this helps with the plan ... ♖e5 and ... d4 since the c5 square is protected.

46 b4?

Yuk! I didn't expect this move from a Board 1 player, putting another pawn on the same colour square as his Bishop.

46 ..... ♖e5  
47 ♖c2 d4  
48 ♗c1 ♗d8  
49 ♗d2 ♗e6

Now 50 ♖d1 ♗f5 or 50 ♗c1 ♖f5 51 h4 ♖g4 so....

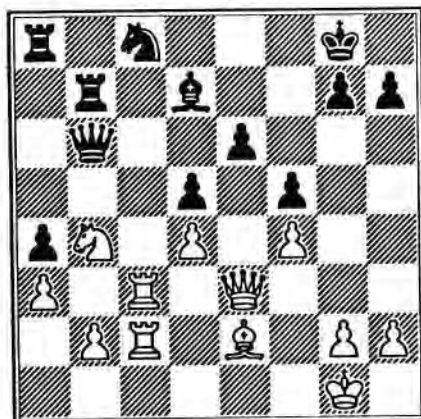
0 1

Please send games (preferably annotated to Games Editor:

George Pyrich,  
53 Dunnikier Road,  
Kirkcaldy,  
Fife, KY1 2RL.

The following was a pleasant surprise too!

A. Oliveira (POR)



A. Muir (SCO)

Black has just played 31 ... ♗e7/c8 eyeing d6 and then e4. He was expecting me to play 32 ♗d3 to c5 but instead I found:

32 ♗xd5!! exd5  
33 ♖xc8+ ♖xc8  
34 ♖xc8+ ♖f7

If 34 ... ♗xc8 35 ♖e8 mate.

35 ♗h5+

Much better than 35 ♖h8 ♖e6 36 ♗h5+ ♖e7 and the ending is more difficult.

35 ..... g6  
36 ♖h8!!

Now if 36 ... gxf5 37 ♖e5 wins eg. (a) 37 ... ♖xb2 38 ♖xh7+ K-moves 39 ♖h8 mate; (b) 37 ...

♖f6 38 ♖xh7+ ♖g6 39 ♖h6+; (c) 37 ... ♖g6 38 ♖xd5+ ♖e6 39 ♖h7+ ♖g8 40 ♖xe6+ ♗xe6 41 ♖xb7; (d) 37 ... ♖g6 38 ♖g8+ ♖h6 39 ♖g7 mate.

36 ..... ♖d6  
37 ♖xh7+ ♖f8

If 37 ... ♖g8 38 ♖h6.

38 ♗f3

38 ♖h6 isn't so good after 38 ... ♖b3, eg. 39 ♖d2 ♗e8! or 39 ♖e2 ♖xf4. It is no longer check on g6!

38 ..... ♖xb2

What else

39 ♗xd5!

Now if 39 ... ♖xd5 40 ♖e7+ ♖g8 41 ♖g7 mate and 39 ... ♖b1+ 40 ♖f2 ♖b2+ 41 ♖g3, so...

Black resigns

(Andrew Muir's current score in NATT 3 is 7/9)

△ △ △ △ △

Now, a nice double effort from another of our internationalists, Richard Beecham, who annotates two recent games.

II Scottish Open Semi-Final 1991-93

White: C Richard Beecham  
Black: George Wallwork

Trompowski Opening A45

1 d4 ♗f6  
2 ♗g5 ♗e4  
3 ♗f4 d5

In an offhand game played last summer OTB, the Polish CC team captain, Jerzy Jablonski who was visiting me for a second time, played 3 ... g5?! but after 4 ♗c1! h6 5 f3 ♗f6 6 e4 White was better.

4 f3

The quiet-looking 4 ♗d2 was played in the Bernard Freedman Memorial Tournament between G C van Perlo-B Vukcevic and continued 4 ... ♗xd2 5 ♖xd2 ♗f5 6 e3 e6 7 ♗d3 ♗xd3 8 ♖xd3 ending in a draw.

4 ..... ♗f6  
5 e4 dxe4  
6 ♗c3

It is interesting to note that we now have a Blackmar-Diemer Gambit with an extra tempo for White. The Czech Champ game 1956 between Opocensky-Holas continued with the immediate recapture and White gained fine attacking chances with 6 fxe4 ♗xe4 7 ♗f3 e6 8 ♗d3 ♗d6 9 ♗e5 ♗f6 10 ♖f3 ♗bd7

11 ♖c3 ♜b4 12 0-0 0-0 13 a3  
 ♜e7 14 ♞ad1.

6 ..... ♜d5

Given as the main line in ECO A but 6 ... exf3 7 ♜xf3 e6 8 ♜c4 c6 9 ♜e2 ♜bd7 10 0-0-0 ♜b6 11 ♜b3 is Archives.

7 ♜xd5 ♜xd5  
 8 c4

Florian gives 8 ♜xc7 ♜c6 as unclear.

8 ..... ♜a5+  
 9 ♜d2 ♜f5  
 10 ♜e2!?

Forcing Black into a gambit line, the book gives 10 f4! based on 10 ... ♜c6 11 ♜e2 e6 12 ♜b3 ♜e7 13 0-0-0 a5? 14 a3 0-0 15 ♜e3 ♜g6 16 g4 ±, Horvath-Rövid, Hungary 1976 (1-0, 28); but 13 ... ♜d7! 14 ♜xb7 ♞b8 15 ♜xc7 ♜d8, Black draws, eg. 16 ♜d6 ♜e7..

10 ..... exf3  
 11 ♜xf3 c5  
 12 0-0-0

Not the best. 12 ♜e3 was more forcing and keeps more "bits" on the board. It's hard to believe but the Russian GM, Yuri Averbak, playing in a tournament in Australia, did not realise it was possible to castle long in a similar situation!

12 ..... ♜c6  
 13 ♜e3 cxd4  
 14 ♜xd4 ♜xd4  
 15 ♜xd4

White is now threatening 16 ♜d8+! ♜xd8 17 ♜a5++ ♜e8 18 ♞d8 mate.

15 ..... ♜d7

Defending against the threat but Black's best was 15 ... e5! 16 ♞e1 f6 17 ♜d3 ♜e6 and White has to prove his position is worth a pawn.

16 ♜e4 ♜a4?!

It would have been better to try 16 ... ♜f5! 17 ♜d4 e5! as before. Black was probably tempted by 17 ♜b1? ♜xd1+! or 17 a3 weakening my King's position and giving Black a possible ♜xa3 etc at some stage in the game.

17 ♜d3 ♜xa2  
 18 ♞he1 ♜a1+  
 19 ♜b1

Clearing the d-file and played in preference to 19 ♜c2 ♜a4+ 20 ♜b1 ♜c6 when Black's Queen is back in the game.

19 ..... ♜a6  
 20 ♜c3 ♜e6

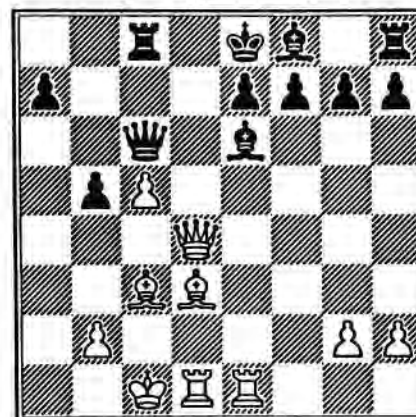
On 20 ... ♜d7 I had planned 21 ♜xg7!! ♞g8 22 ♜xf8 ♜xf8 23 ♜xe7+ etc.

21 c5 ♞c8  
 22 ♜d3 b5

Black's other move, 22 ... ♜c6, is met by 23 ♜b4!

23 ♜d4 ♜c6

Best. On 23 ... ♜d7 24 ♜xd7+! ♜xd7 25 ♜xb5++ ♜c7 26 ♞d7+ ♜b8 27 ♜xa6 wins.



24 ♞xe6! fxe6

Avoiding the obvious 24 ... ♜xe6 25 ♜xb5+ and the less obvious 24 ... ♜xc5 25 ♜xb5+! ♜xb5 26 ♞e5 ♜c6 (26 ... ♜b7 27 ♜a4++ ♜c6 28 ♞c5! ♜xa4 29 ♞xc8 mate) 27 ♞c5 ♜h6+ 28 ♜b1 ♜e6/a6 29 ♞xc8+ ♜xc8 30 ♜a4+ wins.

25 ♜g4

With the lovely threat of 26 ♜g6 and mate next move.

25 ..... ♜f7!

The only move.

26 ♞f1+ ♜e8  
 27 b4 ♞d8  
 28 ♜e4 ♜a6  
 29 ♜b2 e5  
 30 ♜f3 ♜f6  
 31 ♜c6+

Offering 31 ... ♞d7 32 ♜xd7+ ♜xd7 33 ♜b7+ or 31 ... ♜f7 32 ♜e2, both winning the black Queen.

Black resigns

△ △ △ △ △

SCCA League Div.1 - 1992

White: George R. Sprott  
 Black: C Richard Beecham

Leningrad Dutch A88

(George and I played a draw in our only other meeting in the Championship a couple of years ago.)

1 d4 f5

George likes to play a Trompowski and Torre, eg. anything with an early ♜g5,

hence a Dutch - it was only later that I thought he could have played 2 ♖g1!

2 c4 ♘f6  
3 ♘c3 g6

The Leningrad was made popular in the post-war era from about 1936 onwards by players such as Korchnoi, Kuzminikh and Kopilov, who defeated Botvinnik in the 19th USSR Championship of 1951.

4 g3

I expected 4 ♖g5 when Black can go wrong with 4 ... d6? 5 ♖xf6 exf6 6 g3 c6 7 ♖g2 ♖g7 8 h4 h5 9 ♘h3 0-0 10 ♘f4 with a big advantage to White, or play 4 ... ♖g7 5 ♖d2 h6 6 ♖xf6 ♖xf6 7 e4, with play in the centre of more relevance than Black's two Bishops.

4 ..... ♖g7  
5 ♖g2 d6  
6 ♘f3 0-0  
7 ♖g5 ♘bd7  
8 ♖d2 c6  
9 0-0 e5

Also possible was 9 ... ♖c7, the "model game" for the line being Vsachy-Stein, Ukraine Ch. 1957. Grab a pocket chess set and play it through! 10 ♖ad1 e5 11 dxe5 dxe5 12 ♖h6 ♖xh6! 13 ♖xh6 e4 14 ♘d4 ♘e5 15 ♖c1 ♖d7 16 b3 ♖ae8 17 ♘c2 ♘h5 18 ♖d4 ♖c8

19 ♖(1)d1? ♖g4 20 ♖f1 (20 h3 ♖xf2!) f4 21 ♖xe4 c5 22 ♖d5 ♖f5 23 ♖xc5 ♖e7 24 ♖xf5 gxf5 25 ♘c3 fxc3 26 hxc3 f4 27 ♘d5 ♖e5 28 gxf4 ♖xf4 29 ♘(d5)e3 ♖e4 30 ♖xg4 ♖xg4 31 ♘e3 ♖h4 32 ♖d5+ ♖h8 33 ♖a1 ♘f4 34 ♖e1 ♖xd5 (0-1).

10 dxe5

White can also play 10 ♖h6, when Black can transpose into the Stein game above or play along quieter lines with 10 .. ♖e7 11 ♖xg7 ♖xg7 12 dxe5 dxe5 13 ♖ad1 ♘c5 14 ♖d6 ♖xd6 15 ♖xd6 ♘(f6)e4 and a level position as in Abroshin-Liebert, USSR-E.Germany Corres. 1957.

10 ..... dxe5  
11 ♖fd1 ♖e8!

An unexpected move perhaps! From here the Queen is unpinned and may exert pressure on the f-file from f7, travel to g6 or h5 after g6-g5.

CC IM Roy de Vault (USA), who played in an earlier NATT, has written an article on ♖e8 as early as move 7 in the "Chess Correspondent" and "Fernschach No. 6 1991" but without any lines with ♖g5 for White.

12 b4 e4  
13 ♘d4 ♘e5  
14 ♖xf6 ♖xf6

15 c5 ♖g4

Threatening 16 ... e3! 17 fxe3 ♖h6.

16 e3 g5  
17 h3

White must chase the knight - the threats of ♖h5 and ♖h6 are gaining gigantic proportions.

17 ..... ♘e5  
18 ♘(c3)e2 ♖h5  
19 ♖f1!

With the defensive idea of protecting the h-pawn by 20 ♖g1.

19 ..... ♖d7  
20 ♖g1 ♖af8  
21 ♖e2 ♖g6  
22 ♖ab1 h5

The fast time control of 10 in 20 does not allow for deep analysis - I wanted to play ♘d3, ♖xf2 and f4 and wins - hurray! Time would not permit, hence the safe 22 ... h5!

23 b5 h4  
24 f4 exf3 e.p.

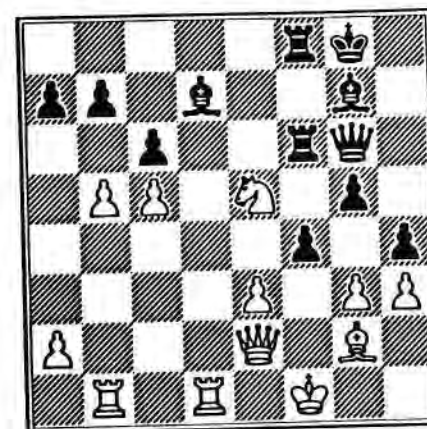
Also possible was 24 ... gxf4 25 gxf4 ♘d3 followed by ♖g3 with ideas of ♖g6, ♖h6 and sacrificing on f4!

25 ♘(d4)xf3 ♖xf3  
26 ♖xf3 f4!!

This is a move which sets a diabolical trap! It's not the 27 ♖xd7? ♖xb1+ but the win of the knight after 27 ♖e5! One of the many threats Black has is 27 ... ♖xh3 followed by g4.

27 ♖e5

It is difficult to criticise this move, attacking the Queen and Bishop and the possible fork on the black rooks! Both 27 ... fxc3/e3+ fail to 28 ♖g1! but...



27 ..... f3!  
28 ♖xf3

The only move! 28 ♖xg6 fxe2++ 29 ♖xe2 ♖f2+ 30 ♖d3 (♖e1 ♖c3+) ♖f5+ wins, or 28 ♖xd7? ♖xb1+ or 28 ♖xf3 g4!

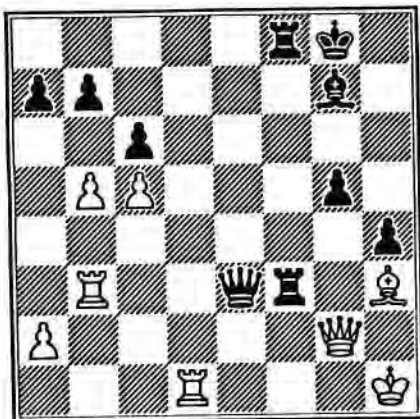
28 ..... ♖xh3+  
29 ♖g1 ♖e8  
30 ♖g4 ♖xe5  
31 ♖xh3 ♖xg3+

32 ♖g2 ♗xe3+  
33 ♜h1 ♜f3!

A sloppy move. The idea was if 34 ♠d7 (34 ♠g4? ♜g3 35 ♖e2 ♜h3+ wins) ♜g3 35 ♖c2 ♜f2. Better was 33 ... ♖xc5 and Black is three pawns to the good.

34 ♜b3!

The best move! George fights to the very end. We reached adjudication here.



I proposed 34 ... ♠c3! keeping the heavy pieces on and forcing 35 ♠d7 ♜g3 36 ♖c2 ♜h3+!! 37 ♠xh3 ♖xh3+ 38 ♜g1 ♠d4+!! winning.

George came back 2 days later with 34 ... ♠c3 35 ♜xc3!! ♖xc3 36 ♖xg5+ ♖g7 37 ♖xh4! is a draw. White threatens 38 ♜g1 or ♠e6+; Black must give back the exchange.

After all this, we go back to the diagram. Black moves the Queen and.....

White resigns

♠ ♠ ♠ ♠ ♠

Next, another game from our Premier Sections, annotated by a long-standing contributor, Walter Roach.

SCCA Premier "B", 1992

White: W.S. Roach  
Black: D. Penman

Sicilian, Scheveningen B80

1 e4 c5  
2 ♠f3 d6  
3 d4 cxd4  
4 ♠xd4 ♠f6  
5 ♠c3 e6  
6 g3

I have tried this OTB, but this is a first in a postal game.

6 ..... ♠c6  
7 ♠g2 ♠e7  
8 0-0 0-0

8 ... ♠d7 is better.

9 ♠xc6 bxc6  
10 e5 dxe5  
11 ♖xd8 ♜xd8  
12 ♠xc6 ♜b8  
13 ♜d1

My plan is to exchange as many pieces as I can, putting faith in my queenside pawn majority.

13 ..... ♠b7  
14 ♜xd8+ ♠xd8  
15 ♠xb7 ♜xb7  
16 ♠a4

I like this move. white can move his Bishop and the c-pawn is ready to march.

16 ..... ♠d5

This move assists White with his plans. But Black would also like to start a kingside pawn advance with an eventual ... f5.

17 c4 ♠b6  
18 ♠xb6 ♠xb6  
19 ♜f1 ♠d4  
20 ♜b1 ♜f8

Black has done well but I believe White has a slight advantage.

21 b3 ♜e8  
22 ♜e2 ♜b6

Not quite sure what Black intends here. 22 ... f5 had to be considered.

23 ♠e3

Development complete at last!

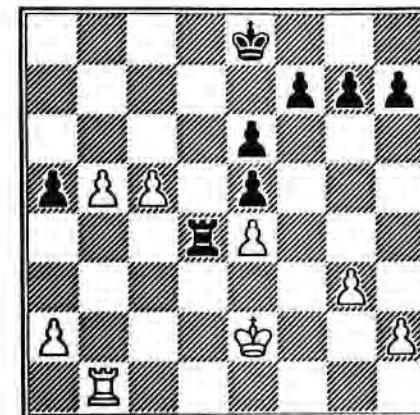
23 ..... ♜d6  
24 c5! ♜d5  
25 b4 ♠xe3  
26 fxe3 a5?

The losing move in a critical position. In view of what follows 26 ... e4 was best.

27 e4!

A pawn sacrifice which sets up winning connected passed pawns

27 ..... ♜d4  
28 b5



28 ..... ♜xe4+

Black takes up the challenge. The alternative is 28 ... ♜b4. There follows 29 ♜xb4 axb4 30 ♜d3 f5 (on 30 ... ♜d7, White has time to capture on b4 eg. 31 ♜c4 f5 32 ♜xb4 f4 [32 ... fxe4 33 a4] 33 ♜c4 and wins.) 31 ♜c4 f4 32 c6! ♜e7! (32 ... ♜d8 33 b6 g5 34 ♜c5 f3 35 ♜d6 ♜c8 36 b7+ ♜b8 37 ♜d7 f2 38 c7+ ♜xb7 39 c8=♖+ and wins) 33 ♜c5 f3 34 c7 ♜d7 35 ♜b6 f2 (And not 35 ... ♜c8 36 ♜c6! f2 37 b6 f1=♖ 38 b7 mate) 36 ♜b7

f1=♖ 37 c8=♗+ ♔e7 38 ♗c5+ and wins.

29 ♔d3! ♖d4+

Or 29 ... ♖b4 30 ♖xb4 axb4 31 ♔c4 e4 32 ♔xb4 f5 33 ♔c3 e5 34 a4 f4 35 a5 ♔d8 36 a6 ♔c8 37 c6 ♔b8 38 b6 and wins.

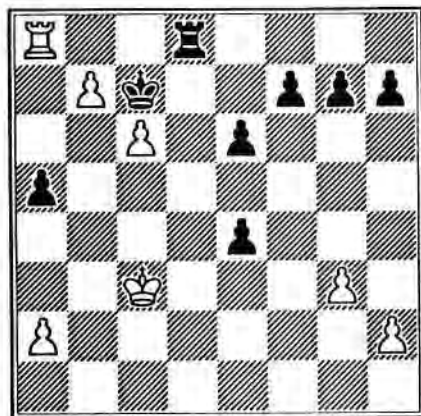
30 ♔c3 ♔d7  
31 b6 ♔c8

Or 31 ... ♖b4 32 ♖xb4 axb4+ 33 ♔xb4 ♔c6 34 a4 e4 35 a5 e3 (35 ... f5 36 a6 e3 37 a7 ♔b7 38 ♔b5 e2 39 c6+ ♔a8 40 ♔a6 e1=♗ 41 b7 mate) 36 ♔c3 ♔b7 (36 ... f5 37 a6 g5 38 a7 ♔b7 39 c6+ ♔a8 40 c7 ♔b7 41 a8=♗+ ♔a8 42 c8=♗ mate) 37 ♔d3 f5 38 ♔xe3 e5 39 h4 g6 40 ♔d3 e4+ 41 ♔c4 h6 42 ♔b5 e3 43 a6+ ♔a8 44 a7 e2 45 ♔a6 e1=♗ 46 b7 mate.

32 c6 ♔b8!  
33 b7 ♖d8  
34 ♖b6 e4?

This hastens the end. The game can be prolonged with 34 ... ♔c7 35 ♖a6 ♖d6! 36 ♔b3 ♖d3+ 37 ♔a4 ♖d4+ 38 ♔a5 ♖d5+ 39 ♔b4 ♖d4+ 40 ♔c3 ♖d6 41 a4 e4 42 ♖b6! and wins.

35 ♖a6 ♔c7  
36 ♖a8 Resigns  
1 0



My opponent resigned when I pointed out the following continuation, 36 ... ♖b8 37 ♔c4 e3 38 ♔c5 e2 39 ♖xb8 ♔xb8 (or 39 ... e1=♗ 40 ♖c8 mate) 40 ♔b6 e1=♗ 41 c7 mate.

△ △ △ △ △

We end this time with a piece from Nick Down, who annotates a hard-fought tactical struggle played in the SCCA League.

SCCA League Div I 1990-91

White: Paul Rodger  
(Crowwood "A")

Black: Nick Down  
(Knights of the Square Table)

Sicilian Def. Razuvaev Var. B52

This game illustrates the merits and demerits of league chess with a fast time control: adventurous chess, in which even Black strives to win - accompanied by

inaccuracies caused by over-ambition.

1	e4	c5
2	♗f3	d6
3	♔b5+	♔d7
4	♔xd7+	♗xd7
5	0-0	♗g6
6	♗e2	e6
7	b3	♔e7
8	♔b2	0-0
9	d4	cxd4
10	♗xd4	a6
11	c4	♗b6
12	♔h1	♖fe8
13	♖d1	♖ad8
14	♗c3	♗c5
15	f4	d5
16	cxd5	exd5
17	e5	♗fe4
18	♖ac1	♔h4

A position characteristic of this "Anti-Sicilian" line has been reached. Black continues sharply, despite having found a line in which White gains a pawn, reasoning (suspectly) that there are several ways for White to go astray, and the critical line is tenable, albeit inferior. White however demonstrates the way to slight advantage.

19 ♗xe4

19 ♖f1 ♗f2+ 20 ♖xf2 ♔xf2  
21 ♗xf2 ♗d3 and the ♗d4 is attacked.

19 ..... ♗xe4  
20 ♖f1 f6

20 ... ♔g3 is simply met by 21 ♔g1.

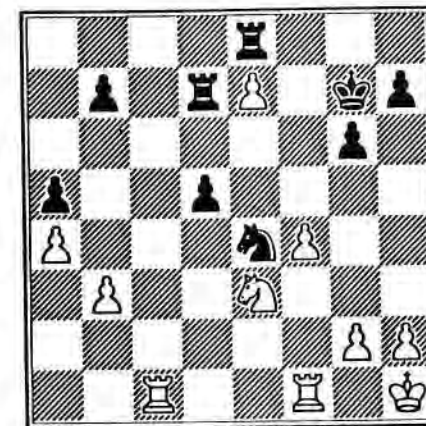
21 e6 f5  
22 ♗xf5 ♔f6

The long diagonal must be contested, e.g.. 22 ♗f2+  
23 ♖xf2 ♔xf2 24 ♗xg7 threatening ♗g4.

23 ♔xf6 ♗xf6  
24 e7 ♖d7  
25 a4 a5  
26 ♗e5 g6  
27 ♗h6+ ♔g7  
28 ♗g5 ♗e4  
29 ♗f5+?

Now it is White's turn to overplay his hand. 29 ♗g4 forces Black to repeat position.

29 ..... ♔h8  
30 ♗h6 ♗f6  
31 ♗e3 ♗g7  
32 ♗xg7+ ♔xg7



An endgame has been reached in which White's e-pawn will fall, albeit at the cost of the a5 pawn, allowing the d5 pawn to advance, bisecting White's forces which cannot adequately blockade it. For me, as for the patient d5-pawn, the game now really came alive.

33 ♖cd1 d4  
 34 ♗c4 ♖exe7  
 35 ♗xa5 ♗c5  
 36 ♘g1 ♖e3

A white rook must be displaced from the d-file in order to defend the b-pawn. Otherwise, White can regroup with ♗c4-e4 after 36 ... d3 37 ♗c4, or 36 ... ♖e2 37 ♖f2 d3 38 ♖xe2 dxe2 39 ♖xd7+ ♗xd7 40 ♘f2.

37 ♖b1 ♖e2  
 38 f5

Now, without the d-file pin, 38 ♖fe1 can be met by 38 ... d3 39 ♖xe2 dxe2 40 ♖e1 ♗e4 41 ♖xe2 ♖d1+ 42 ♖e1 ♖xe1++. Or 38 ♗c4 ♗e4 39 ♗e5 ♖c7 threatening ... ♗c3 controlling c1 through the possibility of discovered ... ♖xe5 attack via ... ♗e2+.

38 ..... d3  
 39 fxg6 d2  
 40 ♗c4

40 gxh7? ♗e4.

40 ..... ♗e4

41 ♗b2 hxg6  
 42 b4 ♖d5

The second rook provokes further weaknesses from the fifth rank. White must concede material.

43 ♖bd1 ♖g5  
 44 g3 ♖h5  
 45 h4 ♗c3  
 46 ♖a1 ♖he5  
 47 ♗d1 ♖e1  
 48 ♗xc3 ♖xa1  
 49 ♖xa1 ♖e1+  
 50 ♘f2 ♖xa1  
 51 ♘e2 d1=♗+  
 52 Resigns  
 0 1

#### ALGERIAN INVITATION TOURNAMENT

1	Prof R Reynolds	USA	2660
2	Dr F Baumbach	GM GER	2530
3	JS Morgado	GM ARG	2505
4	J Krzyszton	GM POL	2605
5	GK Sanakoev	GM RUS	2595
6	AJ Chasin	GM RUS	2620
7	DA Kilgour	IM SCO	2490
8	S Brilla-Banfalvi	GM HUN	2480
9	R Gasiorowski	IM POL	2480
10	A Zanetti	IM ITA	2480
11	Dr CA McNab	SCO	2500
12	K Douaouria	ALG	2435
13	P Stigar	IM NOR	2520
14	G Osterman	IM FIN	2545
15	GC van Perlo	GM NLD	2455

GM norm 8½ pts, IM norm 6 pts



# BITS 'n' PIECES



by Ian Marks

*Beauty is an experience, nothing else. It is not a fixed pattern or an arrangement of features. It is something felt.*

D.H. Lawrence.

This game contains a combination of rare power and beauty. Former OTB Champion Michael Fallone was one of the finest attacking players this country has ever produced, and the wizardry he conjures up in the following game gives merely a glimpse of what his immense creative talent was capable of. Unfortunately for the cause of chess art, I caught whiff of a rat in the nick of time, so Mike's artistry exists only "in the notes".

But don't let that put you off. And don't just read through the game. Get out your set and enjoy what might have been. I guarantee you won't be disappointed.

White: Ian Marks  
 Black: Michael Fallone

to play 5 ... Qc8!, lost a pawn and was duly crushed.

SCCA Quartets Q41 1974-75

3 Qb3!??

Not-Quite-A-Retil A09

1 Nf3

Played mainly in anticipation of Black's reply.

1 ..... d5  
 2 c4 Bf5

As expected. A similar thing occurred in McKay-Fallone in the 1968 Glasgow Open. A confirmed e4-player at the time, Roddy "improved" with 1 g3! d5 2 Bg2 Bf5 3 c4 c6 4 cxd5 cxd5 5 Qb3. Mike now failed

In the footsteps of McK-F. In the Reti proper, Black usually attends to his d-pawn with 2 ... c6, e6, d4 or dxc4. Nowadays I'd jump at the chance to play 3 cxd5 Bxb1 (Nf6 4 d3) 4 Rxb1 Qxd5 (Nf6 5 e4), when White has all the long-term advantages: 2Bs, extra centre pawn and prospects of play on the c-file. In addition, the absence of Black's QB only serves to accentuate his anaemic light squares. The extra "?" is because the Q move is a bad choice psychologically. In view of Mike's ingenious tactical style, only a lunatic would invite the ensuing complications and take him on at his



own game. Ah well, we all get older and wiser.....

3 ..... e5!?



"Nowadays the tremendous advance in theory is sometimes alleged to be reducing the scope for original thought. However, it seems to me that there is little danger of chess being stifled in this way. There are whole fields in the openings still relatively unexplored."

Mikhail Tal

It's positions like this which make me wonder why the extent of some people's chess philosophy seems to be to memorise - and regurgitate - 40 moves of Ruy Lopez theory.

I had half-expected 3 ... dxc4, but 4 Qxc4 is a safe +=. True to his style, Mike aims for maximum complications.

4 Qxb7!?

Again, 4 cxd5! I wonder what Mike had in mind against 4 Nxe5? Maybe 4 ... Nc6 (Bd6!?) 5 Nxf7?! [5 Qxb7; 5 d4!?] Kxf7 6 Qxb7! [6 cxd5!?] Nd7 7 Qxd5+ Be6 8 Qf3+ [8 Qe4 Ngf6 9 Qc2!?] Ngf6 is an unforced piece of fantasy!) 5 Qb5! (5 Nxc6 bxc6 gives Black open lines) Ne7, and if 6 cxd5 a6 7 Nxc6 (Qa4 Qxd5, or the more adventurous 7 ... b5!?) 8 Nxc6 Nxc6 with ... Nd4 to follow) bxc6! followed by a capture on d5 might be OK for a pawn, but it's awfully messy. Anything else in there?

4 ..... Nd7  
5 cxd5 Bc5  
6 d3

To limit the scope of Black's QB, inhibit e5-e4 (but see move 8!) and to threaten e2-e4 as and when necessary.

6 ..... Ne7

Threatening ... Bb6 and ... Nc5, so.....

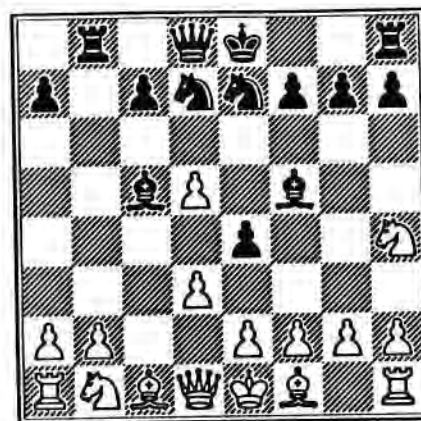
7 Qb3 Rb8  
8 Qd1

I wanted the c-file eventually for a R, and, besides, I didn't fancy the line up Qc2/Bf5. Black is almost fully developed. Do you think it's worth 2 pawns? I didn't think so at the time. Now I'm not so sure! Anyway, I'm now ready to consider e2-e4 so Mike lights the blue touch paper.

8 ..... e4

Remember the note to move 6!?

9 Nh4!



! for artistic impression! h4! What more could a N ask for? 9 dxe4 Bxe4 10 Nc3 Bb4 11 Bd2 Bxf3 12 exf3 (12 gxf3, idea e2-e4 looks a bit rigid to me) Nb6 picks up one of the pawns, although the 2 Bs are a useful trump for White.

9 ..... exd3

9 ... Bg4 10 h3 Bh5 11 dxe4 Nxd5 12 Qxd5 Qxh4 13 g3 wins a piece. However, since Black has been sacrificing pawns all over the place, maybe 9 ... e3! is worth a look.

10 Nxf5 Nxf5

10 ... dxe2? 11 Qxe2 wins a piece.

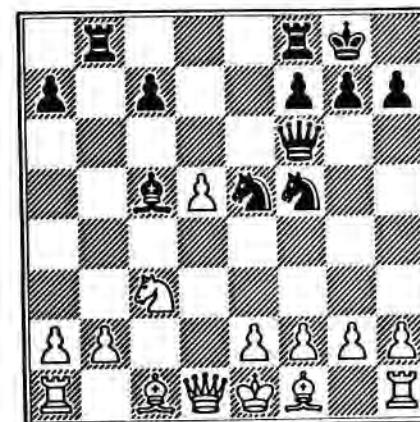
11 Qxd3 Qf6  
12 Nc3

12 ... Rxb2 was a threat, eg. 12 e4 Rxb2 13 Bxb2 Qxb2 14 Qc3 Bb4.

12 ..... Ne5

No worthwhile discovered checks after 12 ... Bxf2+ 13 Kxf2, so Mike gets another piece into action.

13 Qd1 0-0



More or less the critical stage of the game. Black has everything out; White has 2 extra Ps. It's a bit like a football match: you're 2-0 up, but the other lot are having a good spell. You're pinned back in your own penalty area; everyone's behind the ball, and all the time at the back of your mind you're telling yourself that if you can just weather the storm, you *should* be all right....

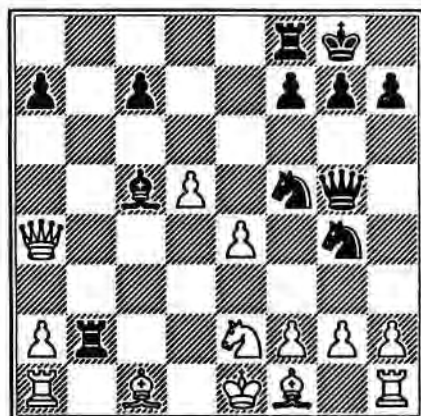
Black's 13th sets up 14 ... Ng3, which on this turn fails to 14 Qa4+, vacating d1 for the K. I must admit, though, that the additional attack on f2 after ... Nf5-g3xh1 appeals to me!

14 e3 Qg5!?

Ingenious, but losing an important tempo. 14 ... Qg6 at once was preferable.

15 g3!

This little move spoils all the fun. The real point of Mike's idea is revealed if I rise to the bait. If we try the fork with 15 f4, then White will never get out alive after 15 ... Qh4+ 16 Ke2 Nc4, while the discovered attack 15 e4 leads to a stunning display of pyrotechnics, starting with the tremendous shot 15 ... Rxb2!!! Now the easy moves to reject are 16 Bxg5 Bxf2 mate and 16 Bxb2 Bxf2+ and mate on e3 next move, but what if White tries to block the second rank? 16 Be2 looks reasonable, but is squashed by 16 ... Qxg2 17 Rf1 Nf3+! 18 Bxf3 Bxf2+! 19 Rxf2 Qxf2 mate, a beautiful combination of attraction and line-opening. So that's no use. Let's move the other B: 16 Bd2 Bxf2+! 17 Kxf2 Qe3 mate! (17 Ke2 Qe3 mate is even nicer. Look at the pin on that B!) So neither B move will do. That leaves the N: 16 Ne2 Ng4! 17 Be3 Nfxe3 18 fxe3 (18 Qc1 Nc2+) Bxe3 and White is belly up (19 Qa4 Bd2+ 20 Kd1 Nf2 mate!), but the real power and beauty of the combination is revealed in this line if I try to give my K a flight square, viz. 16 Ne2 Ng4! 17 Qa4 Qxc1+!!!



Analysis diagram before 17 ... Qxc1+!!!

18 Rxc1 Bxf2+ 19 Kd1 Nfe3 mate!

*"If beauty isn't genius it usually signals at least a high level of animal cunning."*

Peter York

Even today, writing this up for publication, I shake my head in wonder at the way in which all the elements of Mike's idea dovetail so elegantly together. (And, incidentally, look at how safe HIS K is!)

Now back to the game!

15 ..... Qg6  
16 Be2

Better here than on g2. I need to keep an eye on d3 and c4.

16 ..... Nd6  
17 0-0

So we've managed to break out of our penalty area. The tactics are over and White is safe. Suddenly it's at least ±, maybe even +-, providing I don't play a short pass-back to my goalie.

17 ..... f5  
18 Na4

A humorous echo of move 9.

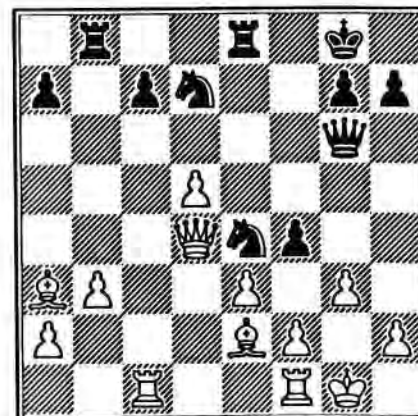
18 ..... Ne4  
19 Nxc5 Nxc5  
20 Qd4 Ned7

The flashy 20 ... Ncd3 achieves nothing providing White avoids 21 Bxd3??

21 b3 Rfe8

Preparing a small combination which I was quite happy to allow (this time!), since it falls in with my plans.

22 Ba3 Ne4  
23 Rac1 f4



And here it is. It doesn't achieve much, but, realising that the game is running away from him, Mike is quite right not to "come quietly".

24 exf4 Nxg3  
25 hxg3 Rxe2  
26 Qc4!

Gains a tempo whatever Black does.

26 ..... Rxa2  
27 d6+ Qf7

If 27 ... Kh8, then just 28 Qxc7.

28 dxc7 Rc8  
29 Qa6 Nb6

29 ... Qe8 30 Rfe1, the point of wanting the e-file open.

30 Rfd1 Qf5  
31 Qxa7 Nd5

Allows a quick finish, but if 31 ... Nd7 32 Qd4 Nf6 (Rxa3 33 Qxd7 Qxd7 34 Rxd7 Raa8 35 Rcd1) 33 Qc4+ Kh8 35 Rd8+ wins.

32 Qb8 Resigns



#### Address Changes?

Members are asked to advise changes of address promptly to their opponents, the tournament secretary, the Scottish CCA Secretary and the Editor of the SCCA Magazine.

## ICCF CONGRESS - GRAZ 1992

by Alan Borwell

Scotland was well represented at the Congress in Austria (20-27th September 1992) by George Pyrich (our International Secretary), Ian Mitchell (International Committee Member) and myself (as Scotland's Delegate and ICCF Treasurer). Fifty representatives from 25 member countries attended, including the new Ladies World CC Champion Ljudmila Belavenez (Russia).

The participants were welcomed by the President of the Austrian Chess Federation, Professor K. Jungwirth. The ICCF President, Henk Mostert (NLD), responded and had special greetings for those delegates representing federations who were to become members of ICCF at the Congress. The ten countries accepted as full ICCF members in Graz were Croatia, Estonia, Latvia, Lithuania, Malta, Russia, Slovenia, Ukraine, South Africa and Wales. Three countries were excluded for non-payment of fees, namely Bulgaria, Cuba and Yugoslavia. Postal arrangements had also been an unresolved problem with Cuba and some countries had "ceased to exist" (eg. East Germany, Soviet Union and Yugoslavia).

In his Report as Tournament Director, Ragnar Wikman (FIN), reported that three sections of the World Individual 3/4 Final would begin later in 1992 and the next World Championship Final and World Semi-finals likely to start in late 1993. Although David Kilgour was on the verge of qualifying for the 3/4 Final, it was likely that he would not be allocated a place until the next series. The next World Cup was likely to begin in early 1994, providing an organising federation could be found. It is likely that the next European Team Tournament will begin in Autumn 1994. It was also decided to organise two Telefax tournaments to begin in 1993 which would be used as the basis for future development of this method of playing chess.

New titles were awarded to 4 CC Grandmasters, 87 International CC Masters, including Scotland's Philip Giulian and David Kilgour, 6 International Lady CC Masters and 5 International CC Arbiters.

After extended discussions, it was decided that the next Olympiad Final XI should have 13 participants. This exception was made due to the radical changes in the World which had affected normal qualification procedures. Scotland had finished in third place in its Preliminary Group behind Hungary and Czechoslovakia but the latter had already pre-qualified in the X Final. Therefore, Scotland achieved the distinction of joining the elite countries of correspondence chess in the draw which was: 1. USA; 2. Denmark; 3. Netherlands; 4. Canada; 5. Poland; 6. Scotland; 7. Sweden; 8. Romania; 9. Hungary; 10. Czechoslovakia; 11. Germany; 12. England; 13. Russia.

There was a record entry of over 50 teams for the new Preliminary Groups and a provisional draw was made for the four sections as the situation for a few countries had not been resolved (see elsewhere in Magazine for teams in Scotland's group).

Norms were established for new individual and team tournaments organised by recognised CC organisations and member countries. Changes were made to norms for some invitation tournaments where there had been withdrawals. These included the Scottish CCA Magazine event where in Group A the IM norm is now 7/13 pts and in the Ladies Section now 8/13 pts.

The next ICCF Congress will be held in Poland in September 1993 and Scotland will be the hosts in 1994 (arrangements will be made by the SCCA's new International Committee). Future meetings would be held in Norway (1995) and Germany (1996) with an invitation received from Argentina for 1997.

The ICCF President concluded the meeting with warm thanks to the Austrian hosts who organised sightseeing excursions to the Riegersburg and the City of Graz and a reception by the Governor of Styria.

In the Blitz tournament, George did extremely well and led the event until he ran out of time against Ladies World CC Champion Ljudmila Belavenez when he was a piece up. Leading scores were: 1. Mrs. L. Belavenez 10 pts; 2. George Pyrich 9½ (better SB); 3/4. Herman Heemsoth IM (GER) and K.H. Podzielnny (GER) 9½, well ahead of 12 other players scoring 7 pts or less. There was a match against Styria Graz Chess Club over 22 boards in which ICCF was narrowly defeated. On top board Dr. Baumbach lost to W. Wittman, but both George Pyrich and I managed to win interesting games.

The ICCF Banquet was held on the Saturday evening and we then returned via Salzburg, where we had a couple of days sightseeing before returning to Glasgow from the new Munich Airport.

Scotland is firmly established as a full ICCF member country and is playing a significant part in the development and promotion of international correspondence chess. It was particularly appropriate that we should have been well represented in Austria with 1994 approaching and George, Ian and I enjoyed the experience, making many new friends.

### "YOUR" ASSOCIATION

If you have any ideas or suggestions about improving or developing the Scottish CCA, we would be very pleased to hear from you. Just write to one of the Office Bearers (addresses on inside of front cover).

## ICCF INDIVIDUAL TOURNAMENTS

Members of the Scottish Correspondence Chess Association are eligible to compete in ICCF promotion tournaments, which are structured to encourage participation by C.C. players of all standards. You can choose between World or European-only sections ranging upwards from Third Class, Second Class to First Class. Higher Class and Master Class events require evidence of C.C. playing strength with entries.

Tournaments are organised in 7 or 15 player sections, except World III Class which is 7-player only. Normally they begin as soon as entries have been received from seven different countries, although sometimes there are two players from the same country. After you have selected a Class, you need to win a Section to be promoted.

The entry fee of £4 (for 7-player groups) or £5 (for 15-player groups) should be made payable to Scottish CCA and sent to Mr. George D. Pyrich, 53 Dunnikier Road, Kirkcaldy, Fife, KY1 2RL.

## FRIENDLY INTERNATIONALS

Members wishing to play in further friendly internationals should advise our Assistant International Secretary, Colin Macgregor.

## ICCF THEMATIC TOURNAMENTS

Sections of 5-7 players, two games against each opponent. Top two players qualify for each Final.

Entries by 1/6/93

Start on 1/8/93

TW/3/93: Sicilian Defence

1 e4 c5 2 ♘f3 ♘c6 3 d4 cxd4  
4 ♘xd4 ♘f6 5 ♘c3 d6 6 ♠g5 e6  
7 ♜d2 ♠e7 8 0-0-0 0-0 9 ♘b3 a6  
10 ♠xf6 gxf6 11 h4 ♘h8 12 g4

TI/3/93: Caro Kann: 1 e4 c6 2 d4  
d5 3 ♘c3 dxe4 4 ♘xe4 ♘d7 5 ♘g5

TO/3/93: From's Gambit: 1 f4 d5  
2 ♘f3 ♘f6

TG/2/93: Falkbeer Counter Gambit  
1 e4 e5 2 f4 d5 3 exd5 e4 4 d3 ♘f6

△ △ △

Entries by 1/9/93

Start on 1/11/93

TO/4/93: Van Geet Opening:  
1 ♘c3 d5 2 e4 d4 3 ♘cc2

TI/4/93: King's Indian Defence:  
1 d4 ♘f6 2 c4 g6 3 ♘c3 ♠e7 4 e4  
d6 5 ♘ge2 c6

TWW/4/93: Q-Gambit Accepted  
1 d4 d5 2 c4 dxc4 3 e4 ♘f6 4 e5  
♘d5 5 ♠xc4 ♘b6

TI/5/93: French Defence: 1 e4 e6  
2 d4 d5 3 ♘c3 ♠b4 4 e5 c5 5 a3  
♘xc3 6 bxc3 ♘e7 7 ♘f3 b6 8 ♠b5  
♠d7 9 ♠d3 ♠a4

Entry fee is £4 per group (payable to Scottish CCA) to:

Mr. George D. Pyrich, 53 Dunnikier Road, Kirkcaldy, Fife, KY1 2RL.

## ICCF INDIVIDUAL TOURNAMENTS

Detailed below are earlier entrants who have now been allocated to sections and commenced play (Nos. 19, 23-28) and new entries received up to 31/12/92. The total for the year of 41 represents a healthy increase over the previous year's (26).

No	Name	Tournament Class/Players	ICCF Tourney Ref
19	S Hilton	World 2nd 15	WT/II/GT/24
23	AN MacMillen	Euro 1st 7	EU/I/1742
24	T Thomson	World 1st 15	WT/I/GT/32
25	MT Dyer	World 1st 7	WT/I/1330
26	MT Dyer	World 1st 7	WT/I/1331
27	IS Campbell	World Master 15	WT/M/GT/318
28	R Cochrane	World 1st 15	WT/I/GT/31
29	I Sneddon	Euro 1st 15	EU/I/GT/309
30	PM Giulian	World Master 15	WT/M/GT/314
31	I Mackintosh	World 1st 7	WT/I/1329
32	I Mackintosh	Euro 1st 7	EU/I/1746
33	IA Marks	Euro Master 7	EU/M/1021
34	CA Macgregor	World 3rd 7	WT/III/894
35	CC McKay	Euro Higher 7	EU/II/1140
36	RF Turner	World 1st 15	
37	S Hilton	Euro 2nd 15	EU/II/GT/175
38	S Hilton	TO/1/93 6	TO/1/93
39	AC MacMillen	World 1st 7	
40	AN MacMillen	Euro 1st 7	EU/II/1753
41	A Armstrong	World 1st 7	

Also a fair number of final results since last time. Once again, special mentions to T. McMorran, achieving another shared first place in a World 1st Class event and Phil Giulian with an impressive score in a World Master Class tourney.

Name	Tournament Class	Final Place	Name	Tournament Class	Final Place
I Sneddon	WT/II/121	4=	G D Pyrich	WT/M/501	5
T McMorran	WT/II/1233	1=	P M Giulian	WT/M/GT/218	2=
M J Macleod	TO/6/86/51	6	C A Strong	WT/II/824	5
M A Hammett	EU/II/926	3	I A Marks	EU/M/291	5
I Sneddon	EU/II/GT/262	7	I W S Mitchell	EU/III/1014	3=
M J Macleod	TO/7/88/4	3	AM McMennie	EU/III/GT/133	5=

Our best wishes for success to Elaine Hartford who sets off in quest of the Ladies World Championship in Semi-Final Group 3 of L/WC/VI and Mike Macleod who plays in the Semi-Final of Thematic Tourney 1/87.

# INTERNATIONAL REPORT

As mentioned in the Editorial, Scotland's players are very active in International events. Pride of place goes to David Kilgour, who has qualified for the World 3/4-Final by scoring 10/12 (2 more to finish) in World Semi XVIII - a superb achievement.

Our Olympiad Teams have begun play, with particularly strong opposition in Final XI (see pages 76/77). Elaine Hartford is our representative in the new Ladies World Champ Semi-Finals.

In the European Team Championship Preliminaries, most of our games have been completed. Although Scotland will not qualify for the Final, there have been some good individual performances. In the 3rd North Atlantic Team Tournament, Andy Muir, Colin McNab, David Kilgour, George Livie and Jim Stevenson have all scored well.

Colin Macgregor has arranged some very interesting friendly internationals (remember these games count for ICCF rating purposes!)

## WORLD CHAMPIONSHIP 3/4-FINAL XVI (SECTION 3)

1	C Haessler	USA	2335
2	AW Kamenez	UKR	2495
3	J Pálsson	IM	ISD 2455
4	V Conti	ITA	2510
5	M Lecroq	IM	FRA 2595
6	W Schlachetka	IM	GER 2520
7	SU Pinkowezkij	RUS	2475
8	IA Kopylow	IM	RUS 2615
9	R Chapman	IM	NZD 2475
10	K Josefsson	IM	SVE 2410
11	CAB Gramajo	GUA	2445
12	Z Sek	IM	POL 2570
13	H-M Elwert	GER	2620
14	JK Footner	IM	ENG 2520
15	IW Samarin	RUS	2530
16	D Mohrlök	IM	GER 2465
17	DA Kilgour	IM	SCO 2490

## FRIENDLY INTERNATIONALS by Colin Macgregor

It is hoped to begin new matches soon against France, Estonia, Slovenia and the BCCA. In other matches, the current scores are:

Scotland	6	Algeria	4
-do-	5½	Iceland	3½
-do-	5	Luxembourg	6
-do-	9	New Zealand	3
-do-	7	Poland	11
-do-	3½	Portugal	4½

No results so far in our match against Latvia.

It is intended to include a full set of pairings for each of the above matches in the next two editions of the Magazine.

## WORLD CHAMPIONSHIP XIV 3/4 FINAL

Section 3				01	02	03	04	05	06	07	08	09	10	11	12	13	14	15
1	V-N ANTON	BRD	2615 GM		1	1	1	1	1	1	1	1	1	1	1/2	1/2	1	1
2	B N BRYSON	SCO	2565 GM	0		1	0		0	1	1	1/2	1/2	1	0	1	1	1/2
3	V B RUKLIN	URS	2475 -	0	0		1/2	0	1/2	1/2	1/2	0	1/2	1/2	1/2	1/2	0	0
4	J E STEINSAPIR	URS	2515 -	0	1	1/2		0	0	1	1/2	1/2	1	1	1	1/2	1	1
5	A P BODISKO	URS	2430 -	0		1	1		1/2		1	1/2	1	1/2	1	1		0
6	S V PEDERSEN	DEN	2550 IM	0	1	1/2	1	1/2		1	1/2	1/2	1/2	1/2	1/2	1	1	1/2
7	C A BLANCO	GM	2440 -	0	0	1/2	0		0					1/2		1		0
8	J GARRIGA	ESP	2665 IM	0	0	1/2	1/2	0	1/2			1/2	0	1/2	1/2	1	0	0
9	Y V SADOVOJ	URS	2330 -	0	1/2	1	1/2	1/2	1/2		1/2		1/2	1	0	1		1/2
10	L V CNEPURNIČ	URS	2475 -	0	1/2	1/2	0	0	1/2		1	1/2		1/2	1/2	1	1	1/2
11	J SORRI	FIN	2510 GM	1/2	0	1/2	0	1/2	1/2	1/2	1/2	1	1/2		1/2	1	1	0
12	N LECROQ	FRA	2590 IM	1/2	1	1/2	0	0	1/2		1/2	0	1/2	1/2		1/2	1	1
13	N M SHER	URS	2500 IM	-	-	1/2	1/2	-	-	-	-	-	-	-	-	-	-	1/2
14	G C v PERLO	NLD	2510 GM	0	0	1	0		0		1	0		0	0	1		
15	V A ANTONOV	URS	2530 -		1/2	1	0	1	1/2	1	1	1/2	1/2	1	0	1/2		

## WORLD CHAMPIONSHIP XVIII SEMI-FINAL

Section 8				01	02	03	04	05	06	07	08	09	10	11	12	13	14	15
1	D NILSSON	(SVE)	2045		0	0	1/2	1	1/2	0	1/2	0	0		0	0	1/2	0
2	T RESOY	(NOR)	2380	1		1/2	0	1/2	1/2	1/2	1/2	1	1/2	0	1/2	1	0	
3	D A KILGOUR	(SCO)	2415	1	1/2		1	1	1	1/2		1		1	1/2	1	1/2	1
4	C TEICHMANN	(CSR)	2370	1/2	1	0		1	1/2	1/2		1/2	1/2	0		1	1/2	1
5	A A SWEREV	(URS)	2455	0	1/2	0	0		1/2	0	1/2	1/2	0	0	0		1	0
6	L T TOLONEN	(URS)	2485	1/2	1/2	0	1/2	1/2		1/2	0	1/2	1/2	0			1/2	
7	D L HANSEN	(DEN)	2280	1	1/2	1/2	1/2	1	1/2		1	0	1	1	1/2	1/2	1/2	1/2
8	V P SIROTKIN	(URS)	2500	1/2	1/2			1/2	1	0					1/2	1	1	1/2
9	H PEREIRA	(POR)	(2200)	1	0	0	1/2	1/2	1/2	1							1/2	
10	B LOEFFLER	(BRD)	2385	1	1/2		1/2	1	1/2	0				0		1/2	1/2	
11	K GRAESER	(BRD)	(2200)		1	0	1	1		0			1		1/2			
12	E OSBUN	(USA)	2475	1	1/2	1/2	1/2	1	1	1/2	1/2			1/2		1		
13	A KOBAYASHI	(JAP)	2390	1	0	0	0			1/2	0		1/2	0		0	0	0
14	A J BANGIEV	(URS)	2445	1/2	1	1/2	1/2	0	1/2	1/2	0	1/2	1/2			0	0	1/2
15	B P DONNELLY	(BAH)	2335	1		0	0	1	1/2	1/2	1/2					1	1/2	

**FEDOR BOHATIRCHUK MEMORIAL CANADIAN CC TOURNAMENT**

	01	02	03	04	05	06	07	08	09	10	11	12	13	14	15	
1 W GROSS (OST) 2410		1/2	1	1/2	0	1	1/2	1/2	1/2	1/2	1/2	1/2	1/2	0	1/2	
2 Y GELEMEROV (BUL) 2440	1/2		1	1	0	1	1	1/2	0	1/2	1/2	1/2	0		0	
3 D GERASSIMOV (BUL) 2415	0	0		0		1	1	1/2	1/2	0	0	0	0		1	
4 M HEITMANN (BRD) 2425	1/2	0	1		1	1/2	1	1/2	1	1	1	1			1	
5 W TÖNNEMANN (BRD) 2435	1	1		0		0	1	1/2	1/2	1	1/2	1/2	0	0		5
6 S CHOUINARD (CAN) 2445	0	0	0	1/2	1		1/2	1/2	1	1/2	0	0	0	0	1	
7 R SIEMMS (CAN) 2355	1/2	0	0	0	0	1/2		0	0	0	0	0	0	0	0	1
8 P SPINATH (CAN) 2360	1/2	1/2	1/2	1/2	1/2	1/2	1		1/2	1/2	1/2	1/2	1	1/2	1/2	8
9 W MATHES (BRD) 2375	1/2	1	1/2	0	1/2	0	1	1/2		0	1/2	0	0	1/2	1	6
10 D ERIKSEN (DEN) 2390	1/2	1/2	1	0	0	1/2	1	1/2	1		0	0	1/2	0		
11 J PRATS (ESP) 2370	1/2	1/2	1	0	1/2	1	1	1/2	1/2	1		1/2	1/2			
12 PM GIULIAN (SCO) 2395	1/2	1/2	1	0	1/2	1	1	1/2	1	1	1/2		1/2	1	1	10
13 W BOOM (NLD) 2455	1	1	1	0	1	1	1	0	1	1/2	1/2	1/2		1/2		
14 R CHAPMAN (NZD) 2485	1/2				1	1	1	1/2	1/2	1		0	1/2			
15 J PREGAL (ARG) 2375	1	0	0		0	1	1/2	0			0					

**HOROWITZ MEMORIAL INTERNATIONAL TITLE TOURNAMENT**

1M norm - 6 1/2 pts.

	01	02	03	04	05	06	07	08	09	10	11	12	13	14	15	
1 K DEHMELT (USA) 2450		0	1	1	1	1	0	1/2	0		0	-	1/2	0	0	
2 J de MAURO (USA) 2540	1		1	1	1	1	1		1/2	1	1/2	-			1	
3 A DUNNE (USA) 2435	0	0		1/2	0	0	1/2	0	0	1	0	-	0	0	0	2
4 I GOLYAK (USA) 2430	0	0	1/2		1/2	1/2		0	1/2	1	-	1		1		
5 J JUNTUNEN (FIN) 2420		0	1	1/2		0	0	1/2	0	1	0	-	0	1	0	
6 A D KARASON (ISD) 2430	0		1	1/2	1		1	1/2	1/2	1/2	1/2	-	1/2	1/2	1/2	
7 D A KILGOUR (SCO) 2410	1	0	1/2	1/2	1	0		1/2	1/2	1	1/2	-	1/2	1	1/2	7 1/2
8 P KINDL (BRD) 2525	1/2		1		1/2	1/2	1/2		1	1/2	1	-	1/2	1	1	
9 B KUBACH (USA) 2435	1	1/2	1	1	1	1/2	1/2	0		1	1	-	0		1/2	
10 O NEUVONEN (FIN) 2530		0	0	1/2	0	1/2	0	1/2	0			-	1/2	1/2	1	
11 E OSBUN (USA) 2455	1	1/2	1	0	1	1/2	1/2	0	0			-	0	1	1/2	
12 P SPINATH (CAN) 2360	-	-	-	-	-	-	-	-	-	-	-	-	-	-	-	wd
13 H SKARKE (BRD) 2475	1/2		1	0	1	1/2	1/2	1/2	1	1/2	1	-			1	
14 T TRONHJEM (DEN) 2500	1		1		0	1/2	0	0		1/2	0	-	0		1	
15 G WALKER (SWZ) 2405	1	0	1	0	1	1/2	1/2	0	1/2	0	1/2	-	0	0		5

**JOHN KELLNER MEMORIAL AUSTRALIAN CCL TOURNAMENT**

Section "A"

	01	02	03	04	05	06	07	08	09	10	11	12	13	14	15	
1 M J READ (ENG) 2440		1/2	1/2	1/2	0	1/2	1/2	1	1	1	1	1/2	1/2	1	0	
2 P STIGGAR (NOR) 2475	1/2		1	1	0	1/2	1/2	1	1	1	1	1/2	1	1/2	1	10
3 C B JONES (USA) 2555	1/2	0		1	1/2	1	0	1	1	1	1	1/2	1	1/2	0	8 1/2
4 D W LOVEJDY (AUS) 2240	1/2	0	0		1	0	1/2	1	1	0	0	1	1/2	1/2	1/2	6 1/2
5 A PRYSTENSKI (CAN) 2405	1	1	1/2	0		1	0		1	1	0	1	0	1/2	0	7
6 G WEST (AUS) (2200)	1/2	1/2	0	1	0		1	1/2	1	1/2	1/2	1	1	1/2	1/2	8 1/2
7 P M GIULIAN (SCO) 2395	1/2	1/2	1	1/2	1	0		0	1	1	1/2	1/2	1/2	1/2	1/2	8
8 R WIKMAN (FIN) 2385	0	0	0	0		1/2	1		1	1/2	1/2	0		1/2		
9 J-G ESTIOT (AUS) (2200)	0	0	0	0	0	0	0	0	0	0	0	0	0	0	0	
10 G PELI (ISL) 2460	0	0	0	1	0	1/2	0	1/2	1			1	1/2			
11 J de MAURO (USA) 2540		1/2	1/2	1	1	1/2	1/2		1				1	1/2		
12 K J HARRISON (AUS) 2330	1/2	0	0	0	0	0	1/2	1/2	1	0	0		1/2	0	0	3
13 V PEDERSEN (AUS) (2200)	1/2	1/2	1/2	1/2	1	0	1/2	1	1	1/2	1/2		1/2	1/2	1/2	8 1/2
14 R CHAPMAN (NZD) 2485	0	0	1	1/2	1/2	1/2	1/2		1				1	1/2	0	
15 C PARE (CAN) 2395	1	1/2	1/2	1/2	1	1/2	1/2	1/2	1		0	1	0	1		

**JOHN KELLNER MEMORIAL AUSTRALIAN CCL TOURNAMENT**

Section "B"

	01	02	03	04	05	06	07	08	09	10	11	12	13	14	15	
1 BKD DEHMELT (USA) 2450		1	1/2	1/2	1/2	0	1/2	0	1	1	1	1/2	1/2	1	1	
2 A HARIMAN (AUS) (2200)	0		0	0	0	0	0	0	0	0	0	0	0	0	0	0
3 S CHOUINARD (CAN) 2445	1/2	1		1	0	0	0	1/2	1	0	0	1	1/2	1/2		
4 S J HENRI (AUS) 2355	1/2	1	0			0		1/2	1/2			1/2	1/2	1	1/2	
5 M PRIZANT (ENG) 2535	1/2	1	1			0	0	1	1/2	1	1		1/2	1/2	1	
6 E FLACKER (BRD) 2435	1	1	1	1	1		1		1	1	1	1/2	1	1	1/2	
7 H J LASSEN (DEN) 2490	1/2	1	1	1	1	0		1/2	1	0	0	1	1/2	1/2	1/2	
8 M EBELING (FIN) 2460	1	1	1	1/2	0		0	1	1/2	1/2	1/2	1	1/2	1	1	
9 P DEWAR (AUS) (2200)	0	1	1/2	1/2	1/2	0	1/2	0		0	1/2	1/2	0	0	0	4
10 S R GILLAM (SCO) 2395		1	0		0	0	1/2	1		0	1/2	1/2	1	0		
11 M F NOBLE (NZD) 2280	1/2	1	1	1/2	0	1/2	1	1/2	1/2	1		1/2	1/2	1/2	1/2	8 1/2
12 H F GLASER (SIN) 2435	1/2	1	1	1/2		0	1	1/2	1/2	1/2	1/2		1/2	1	0	
13 G METTYEAR (AUS) (2200)	0	1	0	0	1/2		0	0	1	1/2	1/2	1/2		1		5 1/2
14 A M LEVINE (USA) 2390	1/2	1	1/2	1/2	1/2	0	1/2	1/2	1	0	1/2	0	0		0	
15 J KOLENBRANDER (NLD) 2420	0	1	1/2	1	0	1/2	1/2	0	1	1	1/2	1		1		

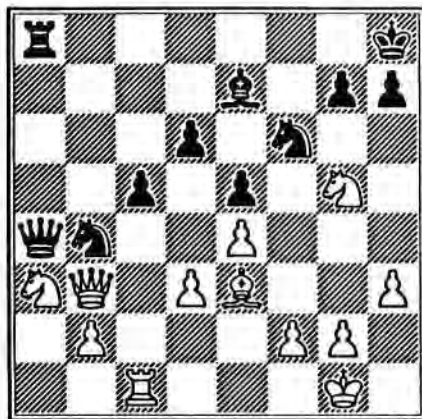
# LADIES OLYMPIAD

by Philip Giulian

After a year's play, the results are just beginning to come in from Scotland's section. For some reason, few women are attracted to chess play, either over-the-board or by correspondence. In the present Olympiad there are only 7 teams in each section. This shortage inevitably means relatively tougher opposition for our women than for our men, simply because it seems only the stronger chess-playing nations are willing or able to enter Ladies teams. Selecting a Scottish team for this Olympiad was easy. There are four players in each team and the SCCA has only four lady members! Unfortunately, Morag McGhee was unable to play and for a while it looked as if we would be unable to field a team. Eventually Alison Coull was persuaded to participate and we ended up with a good side, although the strength of the opposition will make qualification for the Final difficult.

The first game to finish was on Board 4 where Elaine Hartford outmanoeuvred Anja Pietilainen (Finland) to win a pawn. Then, after 26 moves, the following position was reached and Elaine produced a nice combination to win quickly. In case you haven't seen the theme before I will leave the final moves to the end of this article.

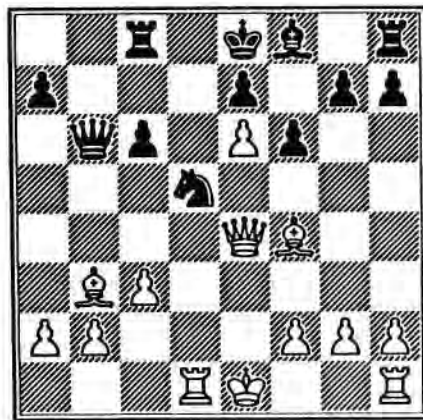
Black: Anja Pietilainen (Finland)



White: Elaine Hartford (to play)

Not to be outdone, Rosie Giulian also had a quick win against Finland. By move 9, she established a "monster" pawn on e6 which crippled Black's development. By move 16, Rosie was ready for the killer punch. (Again final moves at end of article).

Black: Liisa Vayrynen (Finland)



White: Rosie Giulian (to play)

So, an encouraging two wins to start Scotland's campaign. The only games to finish since these are Elaine Hartford's loss against Germany and Alison Coull's loss also against Germany.

How the games ended:

Hartford-Pietilainen: 27 ♖f7+ ♔g8  
28 ♖h6+ ♚h8 29 ♗g8+!! followed by ♖f7 mate.

Giulian - Vayrynen: 17 ♜xd5 cxd5  
18 ♙a4+ ♚d8 19 ♗xd5+

## LADIES WORLD CHAMPIONSHIP SEMI-FINAL VI Section 3

1	Nika-Gavrilaki	Katerina	GRG
2	Roynet	Sylvie	FRA
3	Horácková	Vlasta	CSR
4	Radzikowska	Krystyna	POL
5	Bergh	Kerstin	SVE
6	Gasjunas	Natalja	UKR
7	Tilk	Maie	EST
8	Hammerstad	Liv	NOR
9	Baumann	Claude	SWZ
10	Hund	Juliane	GER
11	Henri	Carmelita	AUS
12	Lezczano	Maria	ARG
13	Tanni	Johanna	FIN
14	Hartford	Elaine	SCO
15	vacant		

## WORLD CHAMPIONSHIP XII SEMI-FINAL

### Section 2

1	P HERTEL	(GER)	2550
2	A P BORWELL	(SCO)	2320
3	J KRISTINSSON	(ISD)	2435
4	J GARCIA-GUT	(ESP)	2300
5	F TEARS	(USA)	2380
6	V NIEMINEN	(FIN)	2375
7	I MÖLLNER	(HUN)	2555
8	W W YARKOV	(RUS)	(2200)
9	JV ALMING PRINS	(NLD)	2295
10	G SZEWCZYK	(POL)	2405
11	H KERN	(GER)	2485
12	C A McNAB	(SCO)	(2425)
13	H BROCKBANK	(ENG)	(2200)
14	A V WOJNA	(RUS)	(2200)
15	B J BENDANA	(NIC)	2340

	01	02	03	04	05	06	07	08	09	10	11	12	13	14	15
1		1/2	1/2			1	1/2	1/2			1/2	1/2			
2										1/2					
3	1/2								1/2						
4	1/2					1/2									
5															
6	0		1/2							1		1/2			
7	1/2									1/2	1/2				
8	1/2													1/2	
9			1/2								1/2	0	1/2		
10									0	1/2	1/2	1/2	1/2	1/2	
11										1	1/2			1/2	
12															
13										1/2	1/2	1/2	1/2		
14															
15										1/2					

WT/M/GT/218	WORLD MASTER CLASS															P.
	1	2	3	4	5	6	7	8	9	10	11	12	13	14	15	P.
1 A. Dokschin (CIS)	-	0	1/2	1	0	1	1	1	1	1	1	1	1	1	1	11 1/2
2 F. Boudreaux (USA)	1	-	1/2	1/2	1/2	1/2	1	1	1/2	1/2	1	1/2	1	1	1	10 1/2
3 P. Giulian (SCO)	1/2	1/2	-	1/2	1	1/2	1/2	1	1	1	1/2	1/2	1	1	1	10 1/2
4 K. Burger (USA)	0	1/2	1/2	-	1	1/2	1	1/2	1	1	1/2	1	1	1	1	10 1/2
5 G. Schwertel (GER)	1	1/2	0	0	-	1	1/2	1	1	1/2	1	1	1	1	1	9
6 B. Budlevskis (AUS)	0	1/2	1/2	1/2	0	-	1	0	1	1	1	1/2	1	1	1	9
7 R. Süß (GER)	0	0	1/2	0	1/2	0	-	1/2	1	1	1	1	1	1	1	8 1/2
8 A. Schwichtenberg (GER)	0	0	0	1/2	0	1	1/2	-	1/2	0	1/2	1/2	1	1	1	6 1/2
9 H. v. Jüchen (GER)	0	1/2	0	0	0	0	0	1/2	-	1	1/2	1	1	1	1	6 1/2
10 S. Sagström (SVE)	0	1/2	0	0	1/2	0	0	1	0	-	1/2	1	1/2	1	1	5 1/2
11 Z. Holovsky (CSR)	0	0	1/2	1/2	0	0	0	1/2	1/2	1/2	-	1/2	1/2	1	1	5 1/2
12 Dr. W. Wittmann (OST)	0	1/2	1/2	0	1/2	1/2	0	1/2	0	0	1/2	1/2	1/2	1	1	5
13 H. Sieber (GER)	0	0	0	0	1	0	0	0	0	1/2	1/2	1/2	-	0	1	3 1/2
14 H. Schulz (GER)	0	0	0	0	0	0	0	0	0	1/2	0	1/2	1	-	1	3
15 G. Pawinski (POL)	0	0	0	0	0	0	0	0	0	0	0	0	0	0	-	0

## ICCF OLYMPIAD XI FINAL

### Board 1

1	Zilberberg	AS	IM	2580	USA
2	Sloth	J	GM	2635	DEN
3	Ballon	GJ	IM	2465	NLD
4	Herbert	J	GM	2500	CAN
5	Krzyszton	J	GM	2605	POL
6	Bryson	DM	GM	2580	SCO
7	Hammar	B		2525	SVE
8	Breazu	M	GM	2500	ROM
9	Honfi	K	IM	2475	HUN
10	Zapletal	J	IM	2505	CSR
11	Burger	H	IM	2570	GER
12	Webb	S	GM	2615	ENG
13	Sanakojev	GK	GM	2595	RUS

### Board 2

1	Abram	G	IM	2580	USA
2	Poulsen	A	IM	2630	DEN
3	v Oosterom	JJ	IM	2575	NLD
4	Berry	J	GM	2570	CAN
5	Matlak	M	(IM)	(2420)	POL
6	Muir	AJ	IM	2540	SCO
7	Andersson	G	GM	2505	SVE
8	Rotariu	G	GM	2415	ROM
9	Meleghegyi	C	GM	2605	HUN
10	Lanc	A	IM	2570	CSR
11	Palm	H	IM	2560	GER
12	Hollis	A	GM	2545	ENG
13	Korolev	SI	IM	2615	RUS

### Board 3

1	Maillard	WE	IM	2550	USA
2	Jensen	VN	IM	2500	DEN
3	Weijerstraas	R	IM	2415	NLD
4	Wright	J	IM	2490	CAN
5	Sek	Z	IM	2570	POL
6	McNab	CA	(IM)	2500	SCO
7	Carlsson	I	IM	2455	SVE
8	Suta	M	IM	2455	ROM
9	Glatt	G		2505	HUN
10	Privara	I	IM	2570	CSR
11	Maeder	K-H	GM	2585	GER
12	Povah	N	GM	2595	ENG
13	Umanskij	MM	IM	2690	RUS

### Board 4

1	DeMauro	JA	IM	2615	USA
2	du Jardin	J		2505	DEN
3	Idema	AA	IM	2540	NLD
4	Widmann	K		2530	CAN
5	Bieluczyk	B	IM	2500	POL
6	Kilgour	DA	IM	2490	SCO
7	Korman	U	IM	2305	SVE
8	Mititelu	G		2350	ROM
9	Fabri	F	IM	2545	HUN
10	Mraz	M	IM	2505	CSR
11	Baumbach	F	GM	2530	GER
12	Thomas	T	IM	2485	ENG
13	Stoljar	SE		2535	RUS

### Board 5

1	Kubach	GL	IM	2510	USA
2	Sorensen	T	IM	2480	DEN
3	Sprenger	EH		2410	NLD
4	Pineault	D	IM	2470	CAN
5	Mularczyk	J		2460	POL
6	Giulian	PM	IM	2395	SCO
7	Lindgren	M		2540	SVE
8	Miron	C		2660	ROM
9	Györkös	L	(IM)	(2410)	HUN
10	Trapl	J	IM	2510	CSR
11	Anton	VM	GM	2620	GER
12	Timson	P		2550	ENG
13	Korelov	AP	IM	2590	RUS

### Board 6

1	Camaratta	FA		2260	USA
2	Hyldkrog	L	IM	2475	DEN
3	van Perlo	GC	GM	2455	NLD
4	MacLeod	D	IM	2520	CAN
5	Konca	D		2455	POL
6	Borwell	AP		2320	SCO
7	Hjort	B		2495	SVE
8	Hang	Ing E		2120	ROM
9	Keszi	J		2485	HUN
10	Göth	J	IM	2460	CSR
11	Kreuzer	M	IM	2660	GER
12	Sowray	P		2380	ENG
13	Bloch	M		2590	RUS

## ICCF OLYMPIAD XII PRELIMINARIES SECTION 4

### Board 1

1	Camilleri	H		2395	MLT
2	Markauss	J		2545	LAT
3	Chia	C-S	(2200)		SIP
4	Portilho	GF		2410	BRS
5	Har-Even	A		2500	ISL
6	Leonardo	JP		2430	POR
7	Wolny	R		2450	POL
8	Cayford	T		2420	USA
9	Miskovsky	P		2505	CSR
10	Gillam	SR		2365	SCO
11	Thorbergsson	B		2525	ISD
12	Keglevic	P		2305	CRO

### Board 2

1	Attard	W		2110	MLT
2	Vitomskis	J		2505	LAT
3	Teo	B		2260	SIP
4	de Cresce	SH		2450	BRS
5	Granski	M		2495	ISL
6	Oliveira	A		2290	POR
7	Dors	R		2500	POL
8	Callaghan	RS		2485	USA
9	Spodny	J		2460	CSR
10	Pyrich	GD		2335	SCO
11	Palsson	JA		2455	ISD
12	Klaic	P		2450	CRO

### Board 3

1	Sollars	C	(2200)		MLT
2	Pulkis	V		2500	LAT
3	Williams	W	(2200)		SIP
4	Felicio	C		2350	BRS
5	Kuperman	B		2325	ISL
6	Moura	AB		2415	POR
7	Matlak	J	(2200)		POL
8	Dehmelt	K		2430	USA
9	Manduch	M		2450	CSR
10	Craig	TJ		2335	SCO
11	Kristinsson	J		2440	ISD
12	Paravic	Z	(2200)		CRO

### Board 4

1	Camilleri	S	(2200)		MLT
2	Strautinsh	U		2485	LAT
3	Teo	K-C		2310	SIP
4	Ferraz	RA	(2200)		BRS
5	Azar	P		2455	ISL
6	Almeida	MC	(2200)		POR
7	Marcinkiewicz	A		2405	POL
8	Martinowsky	E		2380	USA
9	Danek	L		2545	CSR
10	Stevenson	JAB		2330	SCO
11	Gudmundsson	K		2385	ISD
12	Movre	D		2345	CRO

### Board 5

1	Sammut	R	(2200)		MLT
2	Strautinsh	V		2470	LAT
3	Wang	M-L	(2200)		SIP
4	Amori	GS		2455	BRS
5	Eljakhim	D	(2200)		ISL
6	Demetrio	AR		2285	POR
7	Haag	D		2460	POL
8	Embrey	K		2500	USA
9	Marczell	P		2475	CSR
10	Shaw	AJ		2365	SCO
11	Thorsteinsson	E		2360	ISD
12	Krivic	D		2245	CRO

### Board 6

1	Mifsud	T	(2200)		MLT
2	Dauga	Z		2450	LAT
3	Yeo	V	(2200)		SIP
4	Barata	HAG	(2200)		BRS
5	Oren	I		2410	ISL
6	Morais	VM		2375	POR
7	Sapa	W		2240	POL
8	Owen	L		2420	USA
9	Laurenc	P		2445	CSR
10	Jenkins	DM		2310	SCO
11	Halldorsson	JA	(2200)		ISD
12	Strucic	I	(2200)		CRO



# C C OLYMPIAD XI PRELIMINARIES

(Section 2)

1 CZECHOSLOVAKIA		1	2	3	4	5	6	7	8	9	10
1	A LANC WIN 2430		1	1/2	1/2	1	1	1/2	1	1	1/2
2	J AMBROZ -		1	1/2	1/2	1	1	1/2	1/2	1	0
3	M VBIHER IM 2435		1/2	1	1	1/2	1	1/2	1/2	1/2	0
4	R NACHALA 2380		0	1		1/2	1/2		1/2	1	1/2
5	J KOLIN 2335		1/2	0	0	1/2	1	1/2	1	1/2	0
6	P NISKOVSKY 2480		1	1	1	1/2	1	1	1	1/2	0

2 BELGIUM		1	2	3	4	5	6	7	8	9	10
1	A VAN OSNABL WIN 2530	0		1		1	1/2	0	1	1/2	
2	J ROOSE 2330	0		1/2	0	1/2	0	0	1/2	0	1/2
3	B VAN LERUWEN 2140	1/2		1	1/2	1	1/2	1/2	1	1	0
4	D VEYNS -	1		1		0	1	1	1/2	1/2	
5	V LBROY 2265	1/2		1		0	1/2	1	0	1/2	0
6	H VEBN -	0		1	1/2	0	1	1/2	0	0	0

3 SINGAPORE		1	2	3	4	5	6	7	8	9	10
1	H P GLASER 2380	1/2	0			0	1/2	0	1/2	0	0
2	A CHIA -	1/2	1/2			0	1/2	1/2	1/2	0	0
3	K-S TEO -	0	0			0	0	0	1/2	0	0
4	C-V LEONG -	0	0			1/2	0	0	1	1/2	1/2
5	N-Y VONG -	1	0			1/2	0	1/2	1	1/2	0
6	B TEO -	0	0			0	0	0	1	0	0

4 ARGENTINA		1	2	3	4	5	6	7	8	9	10
1	J S MORGADO GN 2475	1/2				1/2	1	1/2		0	1/2
2	B MARCUSSI IM 2470	1/2	1	1		1	1			0	1/2
3	P BUJ IM 2445	0	1/2	1		0		0	1	1	0
4	R A REDOLFI IM 2385			1/2				0	0	0	1
5	A LAURENCENA 2405	1		1/2		1/2	0		1/2	1/2	1/2
6	C O PAPIER IM 2315	0	1/2	1		1		1/2	1/2	1/2	1/2

5 PORTUGAL		1	2	3	4	5	6	7	8	9	10
1	P SILVA WIN 2280	0	0	1	1/2		1/2	1/2	1/2	1/2	1/2
2	R SILVA PEREIRA WIN -	0	1/2	1/2	0		1/2	1/2	1/2	1/2	0
3	H NETO WIN -	1/2	0	1	1		1/2	0	1	0	1
4	J D DE SOUSA -	1/2	1	1			0	1	1/2	1	0
5	A OLIVEIRA WIN -	1/2	1	1	1/2		1	1/2	1/2	1/2	1/2
6	C QUARESMA -	1/2	1	1	0		0	1	1	1/2	0

6 FINLAND		1	2	3	4	5	6	7	8	9	10
1	T PERMAN WIN 2355	0	1/2	1/2	0	1/2					
2	H SABEL 2395	0	1	1/2	0	1/2					
3	K TANNI -	0	1/2	1		1/2					
4	S SJÖMAN 2420	1/2	0	1		1					
5	K KAUNONEN IM 2405	0	1/2	1/2	1	0					
6	R VIKMAN IM 2405	0	0	1		1					

7 BRAZIL		1	2	3	4	5	6	7	8	9	10
1	G FRAGA PORTILHO 2355	1/2	1	1	1/2	1/2	1				
2	S HOWCH DE GRESCH -	1/2	1	1/2		1/2	1				
3	M SILOS BIAVA WIN 2440	1/2	1/2	1	1	1	1/2				
4	A PACINI/SOUSA WIN 2360		0	0	1	0	1/2				
5	O ALCANTARA SOARES 2350	1/2	0	0		1/2					
6	P A GUEBZ BRIOO -	0	1/2	0	1/2	0	0				

8 NORWAY		1	2	3	4	5	6	7	8	9	10
1	T STRAND WIN 2370	0	0	1/2		1/2	0				
2	K V STRAND IM 2445	1/2	1/2	1		1/2	1/2	1/2			
3	F LARSEN 2325	1/2	0	1/2	0	0	1/2	1/2			
4	P STIGAR -	1/2	1/2	1/2	1	1/2	1	1/2			
5	O HJERTHES -	0	1	1/2	1/2	1/2	1/2	1/2			
6	O BRØKKE -	0	1	1	1/2	0	1	0			

9 SCOTLAND - 32 1/2		1	2	3	4	5	6	7	8	9	10
1	D W BRYSON GN 2565	0	1/2	1	1	1/2	1	1	1/2		
2	C A MCNAB (FIDE) IM(2435)	0	1	1	1	1/2	1	1/2	1		
3	A J MORRIS / A.P. BORWELL	1/2	0	1	0	1	0	1	1/2		
4	T S VICKERS / G.D. PYRICH	0	1/2	1/2	1	0	1/2	1	0		
5	P M GIULIAN 2370	1/2	1/2	1	1/2	1/2	1/2	1/2	1/2		
6	A KILGOUR 2365	1/2	1	1	1/2	1/2	1	1	1		

10 HUNGARY		1	2	3	4	5	6	7	8	9	10
1	S BRILLA-BANFALVI GN 2545	1/2	1	1	1/2	1/2	1				
2	J PÖLDI / HONFI IM 2450	1	1/2	1	1/2	1	1	1/2	1/2	1/2	
3	F FABRI 2550	1	1	1	1	0	1	1/2	1/2	1/2	
4	I MULLNER 2345	1/2		1	0	1	1/2	1	1/2	1	
5	T FLORIAN / HAAG 2415	1	1	0	1/2	1/2	1	1/2	1/2	1/2	
6	I FODOR WIN 2195	1	1	1	1/2	1	1/2	1	1	1	

IV EUROPEAN TEAM CHAMPIONSHIP PRELIMINARIES

BOARD 1 - A J NUIR

De Bu Sc Po Sw CS Sp Ir Au

De	Bu	Sc	Po	Sw	CS	Sp	Ir	Au			
Den Sorensen, B	2575	●	1	0	1	0	1	1/2	1/2	1/2	4 1/2
Bul Kostadinov, K	2445	0	●	0	1/2	0	0	0	0	0	
SCO Nuir, A J	(2225)F	1	1	●	1	1/2	1/2	1	1	1	7 km
Por Ferreira/ Almeida	(2300)F	0	1/2	0	●	1	1	1/2	0	1	4 1/2
Swe Carlsson, I	2455	1		1/2	0	●	1/2	1	1/2	1/2	
CS Bulla, Dr J	2435	0	1	1/2		1/2	●	1/2	1/2	1/2	
Spa Lanz Calavia, J M	2355 M	1/2		0	1/2	0		●	0	1/2	
Ire Ludgate, A T	2465	1/2	1	0	1	1/2	1/2	1	●	1/2	5
Aus Fleischhanderl, F	2470	1/2	1	0	0	1/2	1/2	1/2	1/2	●	3 1/2

BOARD 2 - A P BORWELL

De Bu Sc Po Sw CS Sp Ir Au

De	Bu	Sc	Po	Sw	CS	Sp	Ir	Au			
Den Christensen, B	2555	●	1/2	1/2	1/2	0	1/2	0	0	1/2	2 1/2
Bul Metchkarov, V	2200	1/2	●	1/2	1/2	0	1/2	1/2	1/2	1	4
SCO Borwell, A P	2280	1/2	1/2	●	1	0	1	1	1/2	0	4 1/2
Por Costa, F V L B	2200	1/2	1/2	0	●	0	1/2	0	1/2	0	2
Swe Lundholm, Dr S G	2450 M	1	1	1	1	●	1	1	1	1/2	7 1/2 km
CS Krecmer, Ing M	2440	1/2	1/2	0	1/2	0	●	1	1/2	0	3
Spa Garriga Nualart, J	2570 M	1	1/2	0	1	0	0	●	0	0	2 1/2
Ire Harding, T D	2270	1	1/2	1/2	1/2	0	1/2	1	●	1/2	4 1/2
Aus Teichmeister, Dr B	2395	1/2	0	1	1	1/2	1	1	1/2	●	5 1/2 km

BOARD 3 - S R GILLAN

De Bu Sc Po Sw CS Sp Ir Au

De	Bu	Sc	Po	Sw	CS	Sp	Ir	Au			
Den Lassen, H J	2495	●	1/2	1/2	1/2	1/2	1	1	1	0	5
Bul Petrov, V	(2270)F	1/2	●	1/2	1/2	1/2	1/2	1/2	1/2	1/2	
SCO Gillan, S R	2395	1/2	1/2	●	0	0	1/2	1	1/2	0	3
Por Quaresma, L M T	2200	1/2	1/2	1	●	1/2	1/2	1	1	1	6 1/2
Swe Gustafsson, G	2405	1/2		1	1/2	●			1	1	
CS Kolin, J	2340	0	1/2	1/2	1/2		●	1/2	0		
Spa Padros Simon, A	2340	0	1/2	0	0			●	0	0	
Ire Gibson, J P	2395	0	1/2	1/2	0	0	1/2	1	●	0	2 1/2
Aus Aigwüller, Ing M	2360	1	1/2	1	0	0	1	1	1	●	5 1/2

BOARD 4 - D M JENKINS

De Bu Sc Po Sw CS Sp Ir Au

De	Bu	Sc	Po	Sw	CS	Sp	Ir	Au			
Den Sorensen, T	2450	●	1	1/2	1	1/2	1	1	1	1/2	
Bul Sergiew, B	2310	0	●	0	1/2	1/2	1/2	1	1	1	
SCO Jenkins, D M	2385	1/2		●	1/2	0	0	0	1	0	
Por Castro, F A P B	2200	0	1/2	1/2	●	0	1	1/2	1	0	
Swe Enterfeldt, L	2385	1/2	1/2	1	1	●	1/2	1	1/2	1	6
CS Machala, Dr R	2395	0	1/2	1	0	1/2	●	0	1		
Spa Paredes Prats, J	2370			1	1/2	0		●	1/2		
Ire O'Siochru/ Griffin	2200	0	0	0		1/2	1	1/2	●	0	
Aus Hipfl, V / Schwab, R.	2350	1/2		1	1	0	0	1	1	●	

BOARD 5 - G D PYRICH

De Bu Sc Po Sw CS Sp Ir Au

De	Bu	Sc	Po	Sw	CS	Sp	Ir	Au			
Den Jensen, IB V N	2440	●	1	1/2	1	1	1	1	1	1	7 1/2
Bul Kostakiev, D	2200	0	●	1	0		1/2			1/2	
SCO Pyrich, G D	2205	1/2	0	●	1/2	0	1	1	1/2	0	3 1/2
Por Cordiero, V L	2200	0	1	1/2	●		1	1	0	0	
Swe Becker, J	2390	0		1		●	1	1	1	1/2	
CS Marecek, Ing M	2340	0	1/2	0	0	0	●	1		1/2	
Spa Bonay Toscan, S	2375	0		0	0	0	0	●		1/2	
Ire Montgomery, R	2345	0		1/2	1	0			●	1/2	
Aus Venger, Dr K	2200	0	1/2	1	1	1/2	1/2	1/2	1/2	●	4 1/2

BOARD 6 - T J CRAIG

De Bu Sc Po Sw CS Sp Ir Au

De	Bu	Sc	Po	Sw	CS	Sp	Ir	Au			
Den Vefling, G	2430	●	1/2	1	1	0	0	1/2	1	1	5
Bul Parvanov, L	2300	1/2	●	1/2	1/2	0	0	1/2	1/2	1/2	3
SCO Craig, T J	2290	0	1/2	●	1	1/2	1	0	1	1/2	4 1/2
Por Palhares/Figueiras	2200	0	1/2	0	●	1	1/2	1/2	1/2	1	4
Swe Nilsson, J	2200	1	1	1/2	0	●	1	1	1	1	6 1/2
CS Novotny, Ing J	2415	1	1	0	1/2	0	●	1/2	1	1	5
Spa Ivanez Rico, F	2420	1/2	1/2	1	1/2	0	1/2	●	1	1	5
Ire Brady, L B	2265	0	1/2	0	1/2	0	0	0	●	1/2	1 1/2
Aus Koller, H	2200	0	1/2	1/2	0	0	0	0	1/2	●	1 1/2

continued ....

**BOARD 7 D H DEMPSTER**

De Bu Sc Po Sw CS Sp Ir Au

Den Sogaard, O	2440	●	1/2	1	1	1	1/2	1/2	1	1/2	6
Bul Gentchev/Kossatchiev	2220	1/2	●			1	0	1	1	1/2	
SCO Dempster, D H	2135	0		●	0	1	1/2	0	1/2	0	
Por Demetrio, A B R	2200	0		1	●	1/2	1	1	1	1	
Swe Friberg, B	(2265)F	0	0	0	1/2	●	1	0	1	0	2 1/2
CS Rosenzweig, V	2365	1/2	1	1/2	0	0	●	1/2	1	0	3
Spa Montecatine Nies, R	2390	1/2	0	1	0	1	1/2	●	1	0	4
Ire Thomson, A	2200	0	0	1/2	0	0	0	0	●	1/2	1
Aus Strauss, Prof A	2200	1/2	1/2	1	0		1	1	1/2	●	5 1/2

**BOARD 8 - B J MARTIN**

De Bu Sc Po Sw CS Sp Ir Au

Den Berggreen, A J	2400 M	●	1/2	1/2	1	1/2		0	1	1/2	
Bul Minkov, I	2200	1/2	●	1	1	1/2		0	1		
SCO Martin, B.J.	2290	1/2	0	●	0	1	1/2	0	1	1/2	3 1/2
Por Flores/Figueiras	2200	0	0	1	●	0	1/2	0	1/2	1	3
Swe Brilandsson, C-B	2310	1/2	1/2	0	1	●		0			
CS Lizan, Ing L	2380			1/2	1/2		●		1	1/2	
Spa Bernal Casmano, J	2200	1	1	1	1	1		●	1	1	
Ire Killane, J/Thomson	2200	0	0	0	1/2		0	0	●	0	
Aus Steinwender, V	2200	1/2		1/2	0		1/2	0	1	●	

**BOARD 9 - A J SHAW**

De Bu Sc Po Sw CS Sp Ir Au

Den Nielsen, M	2395	●	1	1	1/2	0	1	1/2	1	0	5
Bul Atanasov, B P	2425	0	●	1/2		1	1	1/2			
SCO Shaw, A J	2200	0	1/2	●	0	1/2	1/2	0	1	1/2	3
Por Moraes, V M	2200	1/2		1	●	1	1/2	1/2	1	1	
Swe Rydholm, L	2215	1	0	1/2	0	●	1	0	1	1/2	4
CS Stodola, J	2200	0	0	1/2	1/2	0	●		1	1	
Spa Casares Ripoll, F	2200	1/2	1/2	1	1/2	1		●	1	0	
Ire Gallacher, B	2200	0		0	0	0	0	0	●	0	
Aus Roth, P	2300	1		1/2	0	1/2	0	1	1	●	

**BOARD 10 G V G LIVIE**

De Bu Sc Po Sw CS Sp Ir Au

Den Petersen, B	2345	●	1/2	1/2	1/2	1	0	0	1	1/2	4
Bul Techankov/Solimov	2200	1/2	●	0	0		0			0	
SCO Livie, G V G	2200	1/2	1	●	1	0		0	1	1/2	
Por Costa, L M C M	2200	1/2	1	0	●		1/2	0	1	1/2	
Swe Seger, G	2295	0		1		●	0	1/2		1	
CS Hadraba, Ing V	2420	1	1		1/2	1	●	0	1/2	1/2	
Spa Gude Fernandez, A	2420	1		1	1	1/2	1	●	1/2	0	
Ire Humphrys, F J	2200	0		0	0		1/2	1/2	●	1/2	
Aus Vodep, O	2280	1/2	1	1/2	1/2	0	1/2	1	1/2	●	4 1/2

**BOARD 11 - J BEYFRIED**

De Bu Sc Po Sw CS Sp Ir Au

Den Kleininger, P	2200	●		1	1/2	0	1		1	1/2	
Bul Tenev, T	2200		●	0		1	0	1		0	
SCO Beyfried, J	2200	0	1	●	0		0	1	1	0	
Por Pinto, H M F B	2200	1/2		1	●	1			1	0	
Swe All, V	2400	1	0		0	●	0		1	0	
CS Necessary, Z	2320	0	1	1		1	●	1	1	0	
Spa Gil Matilla, C	2200		0	0	0		0	●	1	0	
Ire Shaw, J	2200	0		0	0	0	0	0	●	0	
Aus Tarnowiecky, Dr H	2340	1/2	1	1	1	1	1	1	1	1	7 1/2

**BOARD 12 - G R SPROTT**

De Bu Sc Po Sw CS Sp Ir Au

Den Danstrup, M	2535	●	1	1/2	1	1		1	1	1/2	
Bul Mintchev, V	(2230)F	0	●	0	1	1/2	1/2	1	1	1/2	4 1/2
SCO Sprott, G R	2200	1/2	1	●	1	0	0	1/2	1	1	5
Por Fonseca, A V V	2200	0	0	0	●	1/2	0	0	1	1/2	2
Swe Olsson, B	2200	0	1/2	1	1/2	●	1/2	1/2	0	1	4
CS Malac, M	2200		1/2	1	1	1/2	●	1	1	1/2	
Spa Guillen Marco, J	2200	0	0	1/2	1	1/2	0	●	1	0	3
Ire Shouldice, A	2200	0	0	0	0	1	0	0	●	1/2	2 1/2
Aus Urban, Prof F	2290	1/2	1/2	0	1/2	0	1/2	1	1/2	●	3 1/2

3rd NORTH ATLANTIC TEAM TOURNAMENT

BOARD 1			1	2	3	4	5	6	7	8	9	10	11	Pts
1	DM MacLeod	Can	*	0	1	0	0	0	1	1	0	0	0	5 1/2
2	JM Masurel	Fra	0	*	0	1	0	0	1	1	0	0		
3	AJ Muir	SCO	1	1	*	1	0	0	1	0	1	0		
4	R Crusi	Spa	0	0	0	*	0	0	0	0	0	0		
5	K Dehmelt	USA	0	0	0	0	*	0	0	0	0	0		
6	MW Wills	Eng	0	0	0	0	0	*	0	0	0	0		
7	D Orseth	Nor	1	1	0	0	0	0	1	1	0	0		
8	AO Karason	Ice	0	0	0	0	0	0	0	0	0	0		
9	M Thomas	Wal	0	0	0	1	0	0	0	0	0	0	3	
10	A Oliveira	Por	0	0	0	0	0	0	0	0	0	0	3 1/2	
11	AT Ludgate	Irl	0	0	0	0	0	0	0	0	0	0		

BOARD 2			1	2	3	4	5	6	7	8	9	10	11	Pts
1	Z Sarosy	Can	*	0	0	0	0	0	0	1	0	0	0	
2	S Vinot	Fra	1	*	0	1	0	0	0	1	1	1	1	7 1/2
3	CA MacNab	SCO	1	0	*	1	0	0	0	1	0	0	0	
4	F Ivañez	Spa	0	0	0	0	0	0	0	1	0	0	0	
5	EE Liebowitz	USA	0	0	0	0	0	0	0	1	0	0	0	
6	T Thomas	Eng	1	0	1	0	0	0	1	1	1	1	1	7 1/2
7	KW Strand	Nor	1	0	0	1	0	0	0	1	1	1	1	
8	B Thorbergsson	Ice	0	0	0	0	0	0	0	0	0	0	0	
9	M Williams	Wal	0	0	0	0	0	0	0	0	0	0	0	0
10	C Quaresma	Por	0	0	0	0	0	0	0	1	0	0	0	
11	TD Harding	Irl	0	0	0	0	0	0	0	1	0	0	0	

BOARD 3			1	2	3	4	5	6	7	8	9	10	11	Pts
1	K Widmann	Can	*	0	1	0	1	1	0	1	1	1	1	
2	J de Lagontrie	Fra	0	*	0	0	0	0	1	1	1	1	0	
3	PM Giulian	SCO	0	0	*	0	0	0	1	1	1	1	0	
4	JL Bernal	Spa	0	0	0	0	0	0	1	1	1	1	0	
5	E Osbun	USA	0	0	0	0	0	0	0	1	1	1	0	
6	AM Stewart	Eng	0	0	0	0	0	0	0	1	1	1	0	4 1/2
7	T Strand	Nor	0	0	0	0	0	0	0	1	1	1	0	
8	G Halldorsson	Ice	0	0	0	0	0	0	0	0	0	0	0	1 1/2
9	G Sinnett	Wal	0	0	0	0	0	0	0	0	0	0	0	0
10	C Santos	Por	0	0	0	0	0	0	0	0	0	0	0	0
11	E Gibney	Irl	0	0	0	1	0	0	0	1	1	0	0	

BOARD 4			1	2	3	4	5	6	7	8	9	10	11	Pts
1	S Boyd	Can	*	0	0	0	0	0	0	0	0	0	0	
2	A Wallyn	Fra	0	*	0	1	0	0	0	1	1	1	0	6
3	DA Kilgour	SCO	0	0	0	0	0	0	0	0	0	0	0	
4	R Montecatine	Spa	0	0	0	*	0	0	0	0	0	0	0	
5	ES Martinovsky	USA	0	0	0	0	*	0	0	0	0	0	0	
6	PF Timson	Eng	0	0	0	0	0	0	0	0	0	0	0	
7	V Taksrud	Nor	0	0	0	0	0	0	0	0	0	0	0	
8	B Gislasen	Ice	0	0	0	0	0	0	0	0	0	0	0	
9	GH Phillips	Wal	0	0	0	0	0	0	0	0	0	0	0	2
10	F Cleto	Por	0	0	0	0	0	0	0	0	0	0	0	
11	JF Gibson	Irl	0	0	0	0	0	0	0	0	0	0	0	

BOARD 5			1	2	3	4	5	6	7	8	9	10	11	Pts
1	J Armstrong	Can	*	0	0	0	0	0	0	0	0	0	0	
2	JL Maurel	Fra	0	*	0	1	0	0	0	1	1	1	1	
3	TJ Craig	SCO	0	0	0	0	0	0	0	0	0	0	0	
4	A Gude	Spa	0	0	0	0	0	0	0	0	0	0	0	
5	D Kopec	USA	0	0	0	0	0	0	0	0	0	0	0	
6	PJ Sowray	Eng	0	0	0	0	0	0	0	0	0	0	0	8 1/2
7	E Iversland	Nor	0	0	0	0	0	0	0	0	0	0	0	4 1/2
8	E Thorsteinsson	Ice	0	0	0	0	0	0	0	0	0	0	0	
9	MJ Griffiths	Wal	0	0	0	0	0	0	0	0	0	0	0	4 1/2
10	F Mendes	Por	0	0	0	0	0	0	0	0	0	0	0	0
11	R Montgomery	Irl	0	0	0	0	0	0	0	0	0	0	0	

BOARD 6			1	2	3	4	5	6	7	8	9	10	11	Pts
1	M Edelstein	Can	*	0	0	0	0	0	0	0	0	0	0	
2	P Danzanvilliers	Fra	0	*	0	0	0	0	0	0	0	0	0	
3	GR Sprott	SCO	0	0	0	0	0	0	0	0	0	0	0	3
4	F Casares	Spa	0	0	0	0	0	0	0	0	0	0	0	
5	I Golyak	USA	0	0	0	0	0	0	0	0	0	0	0	
6	M Read	Eng	0	0	0	0	0	0	0	0	0	0	0	7
7	H Theting	Nor	0	0	0	0	0	0	0	0	0	0	0	9
8	A Karlsson	Ice	0	0	0	0	0	0	0	0	0	0	0	
9	D Guy	Wal	0	0	0	0	0	0	0	0	0	0	0	1 1/2
10	J Gonçaves	Por	0	0	0	0	0	0	0	0	0	0	0	
11	F Coll	Irl	0	0	0	0	0	0	0	0	0	0	0	

BOARD 7		1	2	3	4	5	6	7	8	9	10	11	Pts	
1	L Neubauer	Can	*	1	½		1		1		½			
2	A Negre	Fra	0	*	½	½	½	½	½	½	0	½	4	
3	GD Pyrich	Sco	½	½	*	½		½	0	1	0	½		
4	M Suárez	Spa		½	½	*			0		1			
5	CA Haessler	USA	0	½			*	0	0	0			1	
6	DJR Barnes	Eng		½	½		1	*	0	1	1		1	
7	T Johansen	Nor	0	½	1	1	1	1	*	1	1	½	1	8
8	B Magnusson	Ice		½	0		1	0	0	*	0	½	1	
9	CJ Grier	Wal	½	½	1	0		0	0	1	*	½	½	
10	P Sampaio	Por							½	½	½	*		
11	J Killane	Irl		½	½		0	0	0	0	½		*	

BOARD 10		1	2	3	4	5	6	7	8	9	10	11	Pts	
1	H King	Can	*	0		½	0	½	0	½	0			
2	J Derouineau	Fra	1	*	0	1	½	0	0	½	1	0	1	5
3	JAB Stevenson	Sco		1	*			1	1		1		1	
4	C Gil	Spa	½	0		*	½	1	½		1			
5	RD Weiss	USA	1	½			½	*		½		½		
6	MW Wood	Eng	½	1	0	0		*	½		½		½	
7	A Larsen	Nor	1	1	0	½	½	½	*	0	1	½	½	5½
8	JA Halldorsson	Ice	½	½					1	*	1			
9	P Bowers	Wal	1	0	0	0	½	½	0	0	*	0	1	3
10	JJ Neves	Por		1					½		1	*		
11	I Cantwell	Irl		0	0				½	½	0		*	

BOARD 8		1	2	3	4	5	6	7	8	9	10	11	Pts	
1	AB de Vriendt	Can	*	½	1		1		½					
2	VM Goasdoue	Fra	½	*	0	0	½	1	0	0	½	1	1	4½
3	GWG Livie	Sco	0	1	*	0	½	½	1	½	1	1	1	6½
4	P Garcia	Spa		1	1	*	1		½			1	1	
5	JP Voth	USA	0	½	½	0	*		0	0	0			
6	AJ Slinger/Morris	Eng		0	½			*	1		1		1	
7	ET Gullaksen	Nor	½	1	0	½	1	0	*	1	½	1	1	6½
8	G Hannesson	Ice		1	½		1		0	*	1	½		
9	K Scantlebury	Wal		½	0		1	0	½	0	*		½	
10	J Bray	Por		0	0	0			0	½		*		
11	B Gallagher	Irl		0	0	0		0	0		½		*	

BOARD 9		1	2	3	4	5	6	7	8	9	10	11	Pts	
1	J Pouliot	Can	*		½	1	0	1	0		1	1		
2	D Troffiguer	Fra		*	1	½	1	½	1	½	1	1		
3	IS Campbell	Sco	½	0	*	1	0	0	0	0	½	1	0	3
4	F Pérez	Spa	0	½	0	*	0		1	½	1	1	1	
5	LB Owen	USA	1	0	1	1	*	1	1	1	1	1	½	8½
6	PW Hempson	Eng	0	½	1		0	*	1		1	1	1	
7	M Klingen	Nor	1	0	1	0	0	0	*	½	1	1	1	5½
8	B Sigurjonsson	Ice		½	1	½	0		½	*	½	1	1	
9	J Whittaker	Wal	0	0	½	0	0	0	0	½	*	1	0	2
10	C Bajouco	Por	0	0	0	0	0	0	0	0	0	*	0	0
11	F Humphrys	Irl			1	0	½	0	0	0	1	1	*	

### 3rd NORTH ATLANTIC TEAM TOURNAMENT

Full cross-tables for this event appear above. The current totals for each team, as provided by Tournament Secretary, Carlos Flores (Spain), are:

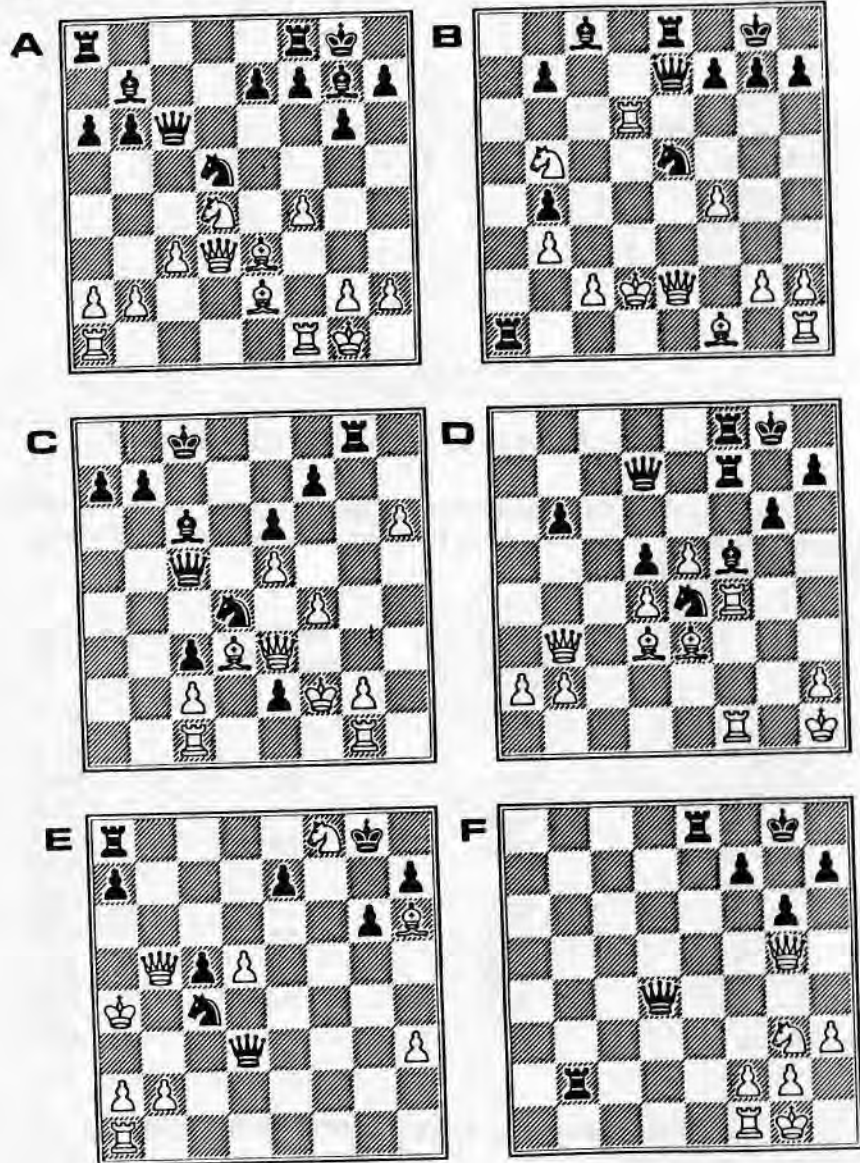
	Points scored	Games completed	%
1. England	56	83	67.5
2. Norway	55	90	61.1
3. Iceland	42	71	59.1
4. Canada	43½	74	58.8
5. Scotland	49½	87	56.9
6. France	50	90	55.5
7. USA	42½	79	53.8
8. Spain	33½	65	51.5
9. Ireland	25½	75	34.0
10. Portugal	20½	74	27.7
11. Wales	24	96	25.0

Total number of games per team = 100

# WINNING CONTINUATIONS

Selected by John Hawkes

ALL BLACK TO MOVE

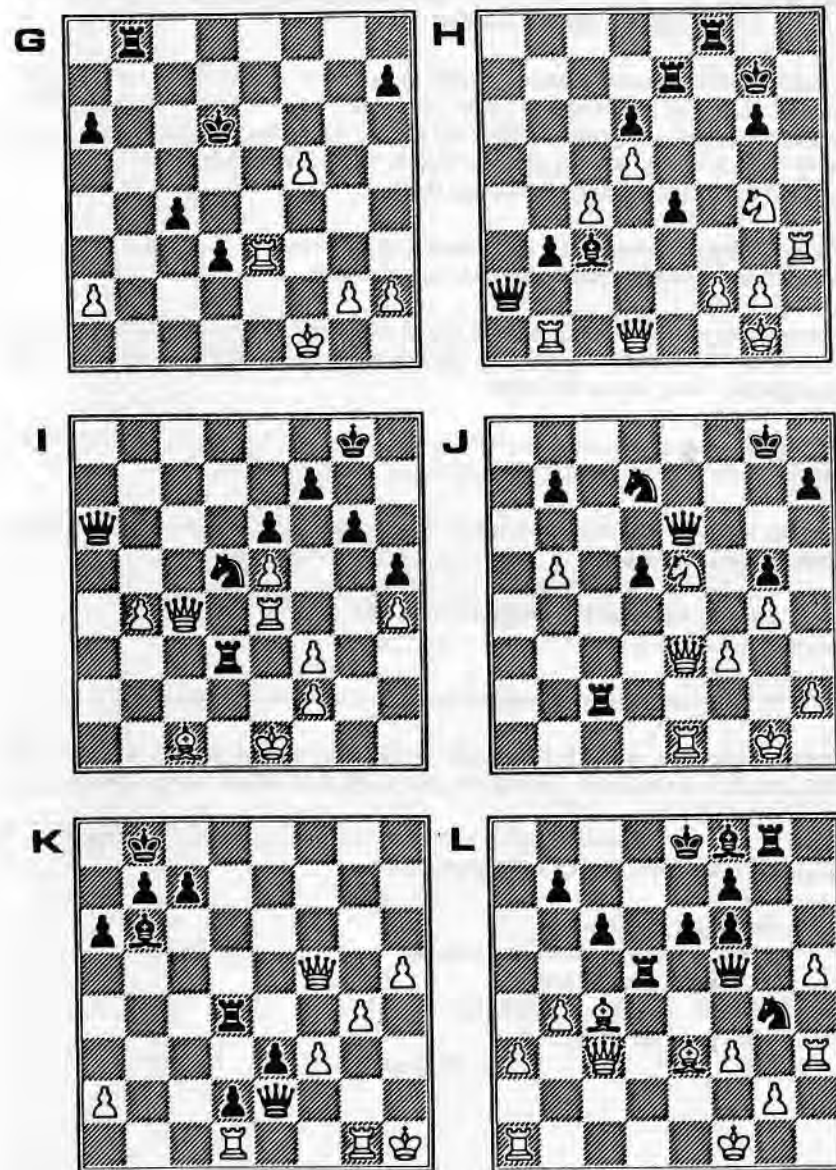


# WINNING CONTINUATIONS

(continued)

ALL BLACK TO MOVE

Solutions on Page 92



## READERS LETTERS

*Extract from letter received from Andy Muir:*

"I have never been able to agree my ICCF rating so I asked the Chief Grader to explain how it was calculated and he kindly did this for me. The grading formula is very complicated and for me it contained 16 different variables!

All games in ICCF tournaments are graded as ungraded players are given provisional ratings based on their results against graded players in the tournament. For players with at least 30 games their new grading is their old grading +K (actual - expected scores in that season). This is similar to OTB gradings with K = 20 for old grades of 2000 and below, going down to 10 for old grades of 2400 and above.

There are further adjustments to K if you have played less than 80 games in total or if there is a big difference between your actual and expected scores.

For players like myself with less than 30 games completed, your ICCF grade is calculated differently and inaccurately. If you don't play many games, this inaccuracy can show up in your grades for a long time in the future.

The first inaccuracy is that an average of your opponents' grades is taken when calculating expected scores and they are not taken separately as they should be.

**Example:** You play 2 games - one against someone the same rating as you and another against someone 400 less.

**Correct method:** Expected score =  $0.5 + 0.92 = 1.42$

**Averaging method:** Expected score =  $2(0.76) = 1.52$

Thus in only 2 games there is a significant difference between expected scores already.

The second inaccuracy is that to stop players coming in at too high or low a level, full credit is not given for wins or losses. For my case, only 86% of my add-on for wins was credited.

A third inaccuracy - common to all players - is that games, although completed by the required date, were not reported to the grader in time.

My calculations are as follows:

Grading performance on games to date	2595
Average of grades taken	- 25
86% of win add-on credited only	- 25
One game not reported	- 5
ICCF grade	2540

*Andrew Muir's letter contd..*

This is a significant inaccuracy which all players might have at some time. Given these, it seems wrong that SCCA grades be the same as ICCF grades for all players. These inaccuracies could be eliminated easily by an SCCA grader, giving more accurate grades.

Also, members with ICCF grades might play games in Scottish tournaments which don't count for ICCF grades. These games would, for them, not count for SCCA grades which seems wrong."

*Nol van 't Riet's comments on the above:*

"In his letter Mr. Muir suggests that there is only one rating system. I suppose that he refers to the system which he knows from the FIDE.

It is not true that there is only one rating system. In his book "Past and Present. The Rating of Chessplayers", Prof Elo describes all kinds of rating systems. From 1975 until 1987 ICCF has been working on the construction of a rating system for international correspondence chess.

When constructing a rating system, one has to make several choices. These choices should be made in such a way that the system is adequate for the specific kind of sports which it has to serve.

Referring to ratings, there is a big difference between over the board chess and correspondence chess. In over the board chess, it never happens that a new player comes on the stage for the first time, scoring for instance 75% against 20 opponents with an average rating of, let's say, 2360.

In correspondence chess, this is very possible. Mr. Muir for instance did it this way. He could do it this way as he learned the game in over the board chess or in national correspondence chess. And in the past there have also been many, many other players scoring very high in their first games against rather strong players.

When we were constructing the ICCF rating system, we had to find a way to handle these kind of specific situations. Situations in which for instance it would not be possible that a player winning two EU/M/GT sections with a score of let's say 26 points out of 28 games would have a rating far above 2600. This should have been the case if we had taken over exactly and thoughtless the FIDE system.

So we constructed our own rating system for ICCF. And according to the rules of this system Mr. Muir has a rating of 2540. This has nothing to do with inaccuracy. His rating is very accurate, according to the rules of the ICCF system. So I will not comment on Mr. Muir's detailed remarks because he is comparing things that can't be compared."

**WINNING CONTINUATIONS**  
from Pages 88/89  
**SOLUTIONS**

**A** 1 ... ♠xd4 2 ♣xd4 ♠xf4  
3 ♠f2 ♠h3+ 0:1  
Basso - K. Johansson,  
Sweden 1984.

**B** 1 ... ♠g4! 0:1  
Zhuravlev - Slavchev,  
EU/M/GT/169.

**C** 1 ... ♠g3! 2 h7 ♠xe3  
3 h8=♣+ ♠c7 4 ♣f6 ♠b5  
5 ♣xf7+ ♠b6 0:1  
McCue-Lawton, USA 1986.

**D** 1 ... ♠g3+! 2 hxg3 ♠xd3  
3 ♠f3 ♠xf4 0:1  
B. Popov-Gomiak, VII Euro  
Champ.

**E** 1 ... ♠xb2+! 2 ♣xb2 ♣a6+  
3 ♠b3 ♠b8+ 4 ♠c2 ♣e2+  
0:1  
S. Rittweger-P. Kindl, BRD  
FSM 1981-84.

**F** 1 ... ♠e1! 0:1  
H-J Siewert-K. Andersen,  
BdF-Tournament 1984.

**G** 1 ... ♠b1+ 2 ♠e1 c3! 0:1  
Ahlbohm-Nordström, CC  
1968/69.

**H** 1 ... ♠xf2! 2 ♠xf2 e3 3 ♣c1  
exf2+ 4 ♠h2 ♠d2! 0:1  
Negoescu-Nielsen, EU TT P.

**I** 1 ... ♠c3! 2 ♠f1 ♠d1+  
3 ♠g2 ♣a1 4 ♠d4 ♠xc1 0:1  
Wallwork-Lumley, II BPCF  
Open Final.

**J** 1 ... ♣h6! 0:1  
On 2 ♠e2 ♠xe2 3 ♣xe2  
♣e6 wins the ♠. Or 2 h3  
♣h4!  
Palmo-Harrison, XIV Semi W  
Champ

**K** 1 ... ♣xd1 2 ♠xd1 e2 3 ♣b1  
♠a5! 0:1  
Danzanvilliers(FRA)-Read  
(ENG), III NATT Bd 6.

**L** 1 ... ♣c2! 0:1  
Ivanov-Dolgov, Central CC  
Champ, 1989/91

Please send games (preferably  
annotated to Games Editor:  
George Pyrich,  
53 Dunnikier Road,  
Kirkcaldy,  
Fife, KY1 2RL.

**OVERSEAS SUBSCRIBERS**  
Subscription for one year's editions  
of the Scottish CCA Magazine can  
be obtained from the Editor for £7  
p.a. (inclusive of postage)

Honorary  
Life Member

Bernard B. Partridge

Life Members

D G Anderson, G M Anderson, K D Anderson, C R Beecham,  
P G Bennett, Prof G H Bird, A P Borwell, S Brady, D M Bryson,  
B W Chalmers, G G Chalmers, J Cox, T J Craig, D Crichton,  
D H Dempster, R Dickson, J Eadie, R Gibson, P M Giulian,  
A B Glass, J R Gracie, B W Grant, Dr M C Grayson,  
M A Hammett, Mrs E Hartford, A T Hislop, W J Hutchison,  
R M Innes, J P E Jack, R Jackson, D M Jenkins, A Kilgariff,  
D A Kilgour, D M Livie, G W G Livie, J P L Lumsden,  
K B McAlpine, J M MacArthur, A J McClelland, P McConnell,  
D McCracken, A McFadyen, Mrs. M McGhee, M E McGhee,  
D McKerracher, I Mackintosh, T McMorrان, J N McNeill,  
D G McRoberts, J McTaggart, I A Marks, I Marshall,  
I W S Mitchell, R Mitchell, G A Morton, A J Muir, J S Murray,  
DR V A Nye, A J Norris, T Paterson, A Pearcey, V A Proudler,  
D R Reid, W S Roach, T Russell, D J Savage, J Seyfried,  
A J Shaw, G R Sprott, Dr K W C Stewart, M A Swystun,  
A Taylor, T A H Taylor, I Thompson, T Thomson,  
H M Walker, J Watson, W P Watson, T S Wickens, A Wilson.

**POSTAL CHESS SUPPLIES**

The Scottish CCA is currently considering whether it should provide a comprehensive service to postal chess players for stationery, magazines and books etc.

In the meantime, the following items are available:

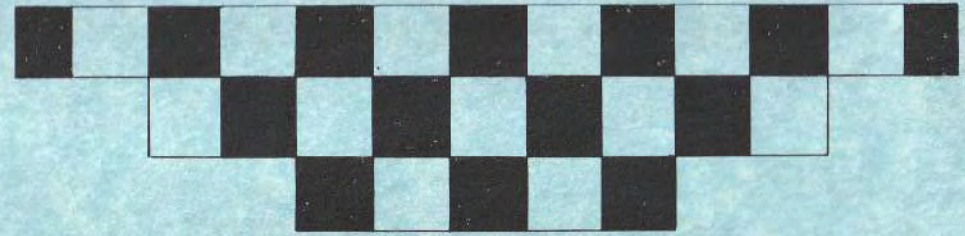
		Excl postages	Incl postages
International CC cards	per 100 cards	£3.50	£3.95
Scottish CCA Chess cards	per 10 cards	£1.20	£1.50
Window envelopes	per 100 envelopes	£1.75	£2.25

Arrangements can also be made for Fernschach, CC Informator (both from Germany) and CC Yearbook (from Italy) subscriptions and for specialist CC tournament booklets etc.

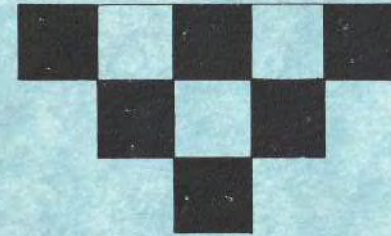
Orders and/or information from:

Alan P. Borwell, 8 Wheatfield Avenue, Inchture, Perthshire, PH14 9RX  
Tel 0828-86556 Fax 0828-86004





**MAKE THE RIGHT  
MOVE**



**WE CAN HELP**



**General Accident**

World Headquarters, Pitheavlis, Perth, Scotland PH2 0NH