

SCOTTISH CORRESPONDENCE CHESS ASSOCIATION

Office-Bearers & Life Members 1992-93

President	Alan P. Borwell	Tel.No,
(Magazine Editor)	8 Wheatfield Avenue, Inchture, Perthshire PH14 9RY	0828-86556
(ICCF Delegate)		Fax 0828-86004
Vice President	Philip Giulian	
	10 Broomfield Ave, Newton Mearns, Glasgow G77 5HR	041-639-1234
Secretary	Alan Hind	
	6 Gordon Drive, Netherlee, Glasgow G44 3TF	041-637-4462
Treasurer	Iain S. Campbell,	
	32 Lomond Drive, Newton Mearns, Glasgow G77 6LR	041-639-3753
Assistant Secretary	Douglas M. Livie	
	17 Whittliemuir Avenue, Muirend, Glasgow G44 3HU	041-637-1936
International Secy (& Games Editor)	George D. Pyrich	
	53 Dunnikier Road, Kirkcaldy KY1 2RL	0592-204133
Asst International Secretary	Colin A. Macgregor	
	Top Flat Left, 9 Argyle Street, Paisley PA1 2ET	041-887-6619
Grading Officer	Michael T. Dyer	
	130 Millhouse Drive, Glasgow G20 0UF	041-946-5915
Asst Magazine Editor	Ian W.S. Mitchell,	
	54 Strathtay Road, Letham, Perth, PH1 2LZ	0738-38257
Publicity and Membership Officer	C. Richard Beecham,	
	28 Morris Road, Prestwick, Ayrshire, KA9 2JW.	0292-76984
Honorary Life Member	Bernard B. Partridge	
Life Members	D G Anderson, G M Anderson, K D Anderson, C R Beecham, P. Bennett, Prof G H Bird, A P Borwell, D M Bryson, B W Chalmers, G G Chalmers, T J Craig, D Crichton, D. Dempster, R Dickson, J Eadie, R Gibson, P M Giulian, A B Glass, J R Gracie, B W Grant, Dr M C Grayson, M A Hammett, Mrs E Hartford, A T Hislop, W J Hutchison, R M Innes, J P E Jack, R Jackson, D M Jenkins, A Kilgariff D A Kilgour, D M Livie, G W G Livie, J P L Lumsden, K B McAlpine, J M MacArthur, A J McClelland, P McConnell, D McCracken, A McFadyen, Mrs M McGhee, M E McGhee, D McKerracher, I Mackintosh, T McMorran, J N McNeill, D G McRoberts, J McTaggart, I A Marks, I Marshall, I W S Mitchell, R Mitchell, G A Morton, A J Muir, J S Murray, Dr V A Nye, A J Norris, T Paterson, A Pearcey, V A Proudler, D R Reid, W S Roach, T Russell, D J Savage, J Seyfried, A J Shaw, G R Sprott, W S Smerdon, Dr K W C Stewart, M A Swystun, A Taylor, T A H Taylor, I Thompson, T Thomson, H M Walker, J Watson, W P Watson, T S Wickens, A Wilson	

SCOTTISH C.C.A. MAGAZINE No. 41

EDITORIAL

(by Alan Borwell)

October 1992

This bumper edition will be the last magazine this year (as explained on page 3) - we hope readers will appreciate the reasoning!

The new season will see the introduction of a modified range of domestic tournaments (see pages 4/5 for more details). It is also hoped to attract more teams in the SCCA League and encourage even more Scottish players to participate in ICCF events and International Friendly matches.

George Pyrich, Ian Mitchell and myself will have attended the ICCF Congress in Graz when this Magazine is ready for distribution and I will enclose a newsletter for all members on the significant events of the Congress. A full report will be contained in the next Magazine, early in 1993.

INDEX OF CONTENTS

	Page(s)		Page(s)
Editorial/Index of Contents	1	SCCA Grading List 1/7/92	29/32
Secretarial Notes	2	Games Section	33/46
SCCA Magazine/Openings Tourney	3	Bits 'n' Pieces	47/50
New Look SCCA Tourneys	4/5	100 Club	51
SCCA AGM Minutes	6/9	ICCF Tournaments	52/54
SCCA Accounts	10/13	Selection Committee	55
SCCA Tournaments	14/19	SCCA Magazine Tournaments	56/57
Scottish Centenary Tourney Book	19	Friendly International	57
Winning Continuations	20	International Tournaments	58/61
SCCA League	21/22	CC Olympiad Tables	62/63
Scottish Open Tourney	22/23	European TT Tables	64/67
Book Reviews	24/25	3rd North Atlantic TT	68/71
ICCF Ratings 1/7/92	26/28	Winning Cont, Notices	72

Subscription Rates Life Member - £50, Annual Member - £9 (incl Magazine)
1993 SCCA Magazine only - £5 per annum (incl postage)

SECRETARIAL NOTES (by Alan Hind)

We are now coming to my busy time of the season. Most of the tournaments are reaching their conclusion and it's time to see how many adjudications are required. For those not sure of the procedure, it's relatively simple:

- (i) Try to agree a result with your opponent
- (ii) If you can't, then make a claim to the Controller enclosing:
 - position of the game (who to play etc)
 - game score (in case of error in above)
 - your claim (ie. win or draw)
 - £5 for each game to be adjudicated (returnable if claim is upheld).

Players should note that a full copy of the game score should be submitted for a win or draw to be recorded.

Entry forms and notes are with this magazine and I would again plead for support to get more members. If you know of anyone, recruit them. Richard Beecham, our Publicity & Membership Officer, will be devoting a lot of time to involving more players this coming season - and this can only be for the best. More new players, more games, more friends, in accordance with the ICCF motto "Amici Sumus"!

Scottish CCA International Committee

The Executive Committee, at its meeting on 30th August 1992, appointed the following members:

- A.P. Borwell (ICCF Delegate)
- G.D. Pyrich (International Secretary)
- C.A. Macgregor (Assistant International Secretary)
- I.W.S. Mitchell (Assistant Magazine Editor)
- I.S. Campbell (Treasurer)

This Committee will be responsible for all international matters concerning ICCF and its other member countries. One of its first main duties will be to organise the 1994 ICCF Congress to be held in Scotland.

Scottish CCA Magazine
(by Alan Borwell, Editor)

After further consideration of the advantages/disadvantages of either a quarterly or four-monthly production schedule, we have decided, with some reluctance, to revert to three editions per annum. These will be issued in February, June and October each year. It is our objective to produce each magazine in sufficient time to have it ready for posting early in the planned month providing, of course, that there are no significant delays with printing.

The cover sale price will continue to be £2 per edition but, for members, the annual cost will remain at only £5 inclusive of postage, and only £7 per annum for overseas subscribers.

One reason for reverting to three editions per annum has been the shortage of material, particularly annotated games, to justify more issues. Despite the excellent arrangements which have been agreed with General Accident for the continued printing of covers and total-copying of the pages, other production and distribution costs inevitably have increased. It can be seen from the accounts that a loss was made on the Magazine and this would increase significantly if we continued with 4 editions per annum, without increasing the subscription.

The next edition of the magazine therefore will be in early February 1993 and will include the final tables for this season's completed competitions and crosstables for the new season. It will also contain a full report on the 1992 ICCF Congress and up-to-date International News.

OPENINGS TOURNAMENTS
(Controller: Tom Thomson)

OT1 QP Irregular
1 d4 Nf6 2 c4 Nc6

- No
- 1 G WOOD
- 2 Z ZERKON
- 3 J CASSIDY

1	2	3	Pts	Pos
•	-			
-	•		0	1/2
		•		

OT2 - QP Blumenfeld
1 d4 Nf6 2 c4 e6 3 Nf3 c5
4 d5 b5 5 Bg5

No	1	2	3	4	Pts	Pos
1 J BLENCOVE	•	•	•			
2 J MERRIFIELD		•				
3 F ANDRES	•		•			
4 J CASSIDY				•		

NEW LOOK TO SCCA TOURNAMENTS!

After a review of our range of events, the Executive Committee has decided to introduce some modifications for the new season. The objectives can be summarised as follows:

1. to give existing members more choice and to encourage OTB and new chess players to try correspondence chess.
2. to provide a wider range of tournaments for all standards of player from beginner to expert.
3. to develop even stronger and more competitive Scottish Championships and Candidates tournaments (both levels for inclusion in ICCF rating calculations).

Scottish Championship

An 11-player all-play-all event (1 game against each opponent). Eligible players will be those finishing in the top 4 places in a previous Championship, the top two players from Candidates Tournaments and then any entries from members with an ICCF fixed rating over 2300.

Candidates Tournaments (normally 2 sections)

9-player all-play-all events (1 game against each opponent). Eligible players will be those relegated from a previous Championship, those finishing in places 3 to 6 of previous Candidates Tournaments and then any entries from members with an ICCF/SCCA published rating over 2000.

Premier Tournaments

7-player all-play-all sections (1 game against each opponent). Open to previous Championship, Candidates or Premier participants, winners (and joint winners) of Major sections and players with ICCF/SCCA or OTB ratings over 1700.

Major Tournaments

5-player all-play-all sections (2 games against each opponent). Open to previous participants, winners/runners-up of Minor sections and players with ICCF/SCCA or OTB ratings over 1400.

Minor Tournaments

5-player all-play-all sections (2 games against each opponent). Open to all players not eligible for higher standard events.

Notes

1. Scottish Championship and Candidates Tournaments will be commenced in January each year and extend for a 21-month playing period, with ICCF rules and time limit (10 moves in each 30 days).
2. Premier, Major and Minor Tournaments will begin each January and conclude in the October of the same year. The time limit will be 10 moves in 20 days.
3. There will be no compulsory relegation from Premier or Major Tournament levels, provided players maintain SCCA membership and have not withdrawn from a previous tournament (without an acceptable explanation).
4. Second class mail will be used throughout (except where normal postal transmission time exceeds 3 days, when first class mail must be used).

*We bring the chess world
to your door!*

write or phone today to:

CHESS DIRECT Ltd.

P.O. Box 18, Mexborough.

South Yorks. S64 9AR

Tel. 0709 873653

- computers, stationery, sets, clocks, boards...
- We stock the widest selection of chess books from the U.K. and overseas
- Second-hand and bargain books available.

Send a 10"x7" s.a.e. for lists.

(please quote ref. SCCA with your request)

SCOTTISH CORRESPONDENCE CHESS ASSOCIATION

Minutes of the Annual General Meeting held in Chess Suppliers (Scotland) Ltd., 15 Hope Street, Glasgow on Sunday 14th June 1992 at 4.00 pm.

Present: A.P. Borwell (President), C.R. Beecham, I.S. Campbell, P.M. Giulian, A. Hind, D.M. Livie, C.A. Macgregor, I.W.S. Mitchell, G.D. Pyrich, A.J. Shaw.

Apologies: G.W.G. Livie, G. McKnight, R.S. Montgomery.

President's Remarks

- The President welcomed all those attending. It was with regret that he informed the meeting of G.W.G. Livie's resignation as Vice President. George had served the Association in a formal capacity since 1978 as Grading Officer and since 1982 as Vice President (shortly after the ICCF meeting in London at which Scotland first made progress towards independence). Other considerable achievements were as Sub-Committee Chairman organising the highly successful Peebles ICCF Congress in 1985, member of the ICCF Telechess and Rules Committees, fund-raising via lotteries and 100 Club, and controller of prestigious ICCF events and team captain of Scottish teams. He had also been highly supportive of others throughout the period. It was hoped he would remain involved and the President asked D.M. Livie to officially convey our appreciation.
- On more general terms, the year had been momentous. Our formal ICCF recognition had been followed up by continued success in the Olympiad. We were very hopeful of achieving third place in the Preliminaries and almost certainly gaining a place in the next Finals. We were reasonably well placed in the current European and NATT.
- Individual success had come to P.M. Giulian and D.A. Kilgour who had gained IM title norms this year and these would be formally ratified in Austria by the 1992 ICCF Congress.

The Minutes of the last Annual General Meeting held on 2nd June 1992, which were published in Magazine No. 36, were approved.

Secretary's Report

The Secretary's Report made the following points:

- Membership had improved slightly despite postal increases. We were pleased to co-opt Richard Beecham onto the Executive during the year and he would be co-ordinating membership this coming year.
- The Magazine was now published quarterly and many thanks to Alan and Moira Borwell and Ian Mitchell - the editorial and production committee. George Pyrich had taken over the Games Column from Douglas Bryson. High standards had continued and many thanks to all involved. General Accident had agreed to continue production into the future, including production of the covers, at cost.
- Full ICCF membership had been achieved and there had been an encouraging response in tournament entries. With a new BPCF committee recently formed and Wales likely to secure full ICCF membership this year, it was hoped that we could all work amicably together in the best interests of the members of the respective national associations.
- Finance was still healthy and the Treasurer would report later.
- SCCA Rules had been re-examined in Committee and it was hoped that a new Rules Brochure would be available for the start of next season. As ever, though, there must be reliance on players' honesty and integrity.
- The updated Constitution would be published in a future Magazine (early 1993).
- We would probably start a match against the BCCA soon.
- We had received two invitations to a GM tournament organised by Algeria to start in 1993.

Treasurer's Report

The Treasurer circulated copies of the audited accounts for the year ended 31st March 1992 (see pages 10-13)

Minor comments were made and comparatives explained. Specific items mentioned were:

- The loss attributable to the Magazine this year is a direct result of publishing 4 editions in the last financial year, without an increase in subscription/cover price.
- We have received our final instalment of income from sale of postcards.
- Minor understatement of loss as net accrual for medals and engraving (£86).

The accounts were accepted unanimously and appreciation was shown to George Pyrich for his work as Treasurer over the last 6 years.

Election of Office-Bearers

The following were elected to the Executive Committee:

President	A.P. Borwell
Vice President	P.M. Giulian
Secretary	A. Hind
Treasurer	I.S. Campbell
Assistant Secretary	D.M. Livie
International Secretary	G.D. Pyrich
Assistant International Secretary	C.A. Macgregor
Grading Officer	M.T. Dyer
Assistant Magazine Editor	I.W.S. Mitchell
Publicity & Membership Officer	C.R. Beecham

Thanks to those re-elected for previous efforts and welcome to new members.

Election of Auditor

It was agreed that the present Auditor, Mr. Hamish Bell, be re-elected for the ensuing year.

Subscriptions

After many years of membership at £3 per annum, it was unanimously agreed to increase this to £4. Magazine subscription and tournament fees would remain unchanged.

Any Other Business

It was agreed that a sub-committee of the full Executive be formed called the International Committee with remit wider than the Selection Committee. Full details to be agreed at the next Executive meeting.

QUARTETS/HANDICAP
Entries can be made at any time to Alan Hind. New pairings will be arranged when there are sufficient new players to do so.



S1 EDITRICE

CORRESPONDENCE CHESS YEARBOOK
No. 5 August 1992

published by S1 Editrice,
Via Marsala 45, 40126 Bologna,
Italy.

Now available from Chess Suppliers
(Scotland) Ltd.

The fifth edition of this excellent CC journal contains 383 games and historical articles on A. O'Kelly and A. Alekhine. There is theoretical analysis on Alapins Variation (Sicilian) and the Russian variation (Ruy Lopez). There are results tables of international CC tournaments and the accuracy of games and references improves with each edition.

This Yearbook, with its Informator style publication of CC games, deserves worldwide support.

SCOTTISH CORRESPONDENCE CHESS ASSOCIATION
FINANCIAL ACCOUNTS FOR THE YEAR ENDED 31st MARCH 1992

1991		GENERAL ACCOUNT	1992	
£	£	INCOME	£	£
		MEMBERSHIP FEES		
345.00		Annual (125)	375.00	
<u>131.26</u>		Life Members Fund	<u>137.57</u>	
476.26			512.57	
<u>44.00</u>	432.26	less Discount	<u>44.00</u>	468.57
		COMPETITION FEES		
470.00		Individual	510.00	
<u>123.00</u>		League	<u>87.00</u>	
593.00			597.00	
302.35		less Prizes	281.40	
<u>52.48</u>	238.17	Medals & Engraving	<u>22.25</u>	293.35
		MAGAZINE		
800.00		Sales	1010.36	
<u>110.00</u>		Adverts/Leaflets	<u>175.00</u>	
910.00			1185.36	
<u>786.47</u>	123.53	less Expenses	<u>1283.51</u>	(98.15)
		3rd OPEN TOURNEY		
-	-	Entry Fees	162.00	
-	-	less Accrued Prizes	<u>89.10</u>	72.90
		GRANT		
	410.00	Scottish Chess Association		300.00
		ADJUDICATIONS		
108.00		Fees Received	32.00	
<u>37.50</u>	70.50	Fees Paid	<u>30.00</u>	2.00
	135.00	DONATIONS		152.00
		MISCELLANEOUS		
260.00	-	Sales of Postcards	240.00	
<u>14.50</u>	274.50	Other	-	240.00
	<u>1683.96</u>			<u>1430.67</u>

1991	GENERAL ACCOUNT	1992
	EXPENDITURE	
12.00	SCA AFFILIATION FEE	12.00
25.00	CONTRIBUTION TO BPCF	25.00
40.00	ICCF	63.00
188.46	CONTROLLERS EXPENSES	172.61
293.06	SECRETARIAL EXPENSES	568.50
11.04	BANK CHARGES	44.59
3.18	INTEREST CHARGES	3.09
48.50	CORPORATION TAX (provision)	50.00
30.00	AUDITOR'S FEE	40.00
-	ADVERTS/STATIONERY	50.00
20.00	MISCELLANEOUS	60.00
<u>671.24</u>		<u>1088.79</u>
<u>1012.72</u>	SURPLUS FOR YEAR	<u>341.88</u>
	LIFE MEMBERS ACCOUNT	
50.00	Membership Fees	50.00
<u>230.37</u>	Interest Received	<u>194.34</u>
	less transferred to	
	General Fund	<u>137.57</u>
<u>149.11</u>	SURPLUS FOR YEAR	<u>156.77</u>

1991		INTERNATIONAL ACCOUNT		1992	
£	£	INCOME		£	£
	54.00	INTERNATIONAL MATCH FEES		46.00	
	504.23	INTEREST RECEIVED		417.78	
		100 CLUB			
886.00		Subscriptions	964.00		
<u>403.60</u>	482.40	less Prizes	<u>478.30</u>	485.70	
	-	MISCELLANEOUS		12.00	
	<u>1040.63</u>			<u>961.48</u>	
EXPENDITURE					
		ACCRUED PRIZES			
	-	Anniversary Tourney		1600.00	
	-	EXPENSES - LADIES TOURNEY		75.00	
12.50		LOTTERY LICENCE		17.50	
110.21		CENTENARY OPEN TROPHY/MEDALS		-	
459.49		ICCF CONGRESS		815.58	
50.00		CENTENARY INTERNAT. BOOK		-	
129.04		INTERNATIONAL SECY EXPENSES		183.89	
	-	MISCELLANEOUS		50.00	
	<u>761.24</u>			<u>2741.97</u>	
<u>279.39</u>		SURPLUS/(DEFICIT) FOR YEAR		<u>(1780.49)</u>	

BALANCE SHEET AS AT 31st MARCH 1992					
1991		ASSETS		1992	
£	£	£	£	£	£
		CLYDESDALE BANK PLC			
432.08		Current Account	823.62		
<u>3539.55</u>	3971.63	Internat Deposit A/c	<u>3250.58</u>	4074.20	
	19.00	NATIONAL GIROBANK		19.00	
	10.00	NATIONAL SAVINGS BANK		10.00	
	5513.36	NATIONWIDE ANGLIA		6230.45	
	<u>70.00</u>	DEBTORS		<u>149.00</u>	
	<u>9583.99</u>			<u>10482.65</u>	
LESS LIABILITIES					
328.00		GENERAL ACCOUNT	1384.85		
<u>515.35</u>	<u>843.35</u>	INTERNATIONAL ACCOUNT	<u>1639.00</u>	<u>3023.85*</u>	
	<u>8740.64</u>			<u>7458.80</u>	
REPRESENTING					
CAPITAL ACCOUNT	OPENING BALANCE	SURPLUS	CLOSING BALANCE		
	£	£	£		
General Fund	5020.71	341.88	5362.59		
Life Members Fund	1181.33	156.77	1338.10		
International Fund	<u>2538.60</u>	<u>(1780.49)</u>	<u>758.11</u>		
	<u>8740.64</u>	<u>(1281.84)</u>	<u>7458.80</u>		
Note #					
Accrued Prizes	2454.35	(incl £1600 International Tourneys)			
Other Creditors	<u>569.50</u>	(Magazine)			
	<u>3023.85</u>				

Auditor's Report

I have examined the foregoing accounts and have obtained such explanations as I consider necessary. In my opinion these accounts give a true and fair view of the state of the Association's affairs at 31st March 1992.

(H. B. Bell, C.A.)

**CHAMPIONSHIP 90-92**

Controller: A Maxwell

No.	1	2	3	4	5	6	7	Pts
1 G D PYRICH	*	0	1	1/2	1	1/2	1/2	3 1/2
2 J A B STEVENSON	1	*			1	1/2	1/2	
3 C F BOYLE	0		*	0		0	0	
4 A T HISLOP	1/2		1	*	1	0	1	
5 M T DYER	0	0		0	*	1/2	0	
6 P MCGOWAN	1/2	1/2	1	1	1/2	*	1	4 1/2
7 G WALLWORK	1/2	1/2	1	0	1	0	*	3

CANDIDATES 90-92

Controller: C R Beechan

No.	1	2	3	4	5	6	7	8	9	Pts
1 T THOMSON	*	1	1/2	1	0	1/2	1/2	1	1	5 1/2
2 G BIRD	0	*	1	1	0	1/2	1/2	1	1	5
3 A W I CAMPBELL	1/2	0	*	1	1	0	0	0	0	2 1/2
4 W M COOK	0	0	0	*	1	1	0	1	1	4
5 D HARVEY	1	1	0	0	*		0	1	1/2	
6 D HOLMES	1/2	1/2	1	0		*	1/2		1	
7 W HULME	1/2	1/2	1	1	1	1/2	*	1/2	1/2	5 1/2
8 A MAXWELL	0	0	1	0	0		1/2	*	0	
9 C C MCKAY	0	0	1	0	1/2	0	1/2	1	*	3

**CHAMPIONSHIP 91-93**

Controller: A Maxwell

No.	1	2	3	4	5	6	7	8	9	Pts
1 T J CRAIG	•									
2 A T HISLOP		•								
3 N DOWN			•							
4 J STEVENSON				•						
5 G D PYRICH					•		1	1/2		
6 I S CAMPBELL						•			1/2	
7 M T DYER					0		•	0		
8 T THOMSON					1/2		1	•		
9 C F BOYLE						1/2			•	

CANDIDATES 91-93

Controller: C R Beechan

No.	1	2	3	4	5	6	7	8	9	10	11	12	13	Pts
1 W HULME	•						1	1/2	1/2					
2 W M COOK		•	1/2						0	0	0			
3 J HERRIES		1/2	•								1	0		
4 M SWYSTUN				•									0	
5 D HARVEY					•		1/2							
6 R TURNER						•	0						0	
7 J WATSON	0				1/2	1	•	1/2	1/2			1	1	
8 C MCKAY	1/2						1/2	•						
9 B GOODWIN	1/2	1					1/2		•				0	
10 D NEIL										•				
11 M H DUNN		1	0								•			
12 D SALTER							0					•		
13 W RUTHERFORD		1	1	1		1	0	1					•	

PREMIER TOURNAMENTS

Controller: I S Campbell

A	1	2	3	4	5	6	Pts
1 A WRIGHT	●	0			-		
2 SA MURRAY	11	●	1	-			
3 A KILGARIFF		●		-			
4 AR WILSON	0	●	-				
5 SG MACKENZIE	-	-	-	●	-	w/b	
6 DA HUGHSON				-	●		

B	1	2	3	4	5	6	Pts
1 VS ROACH	●	0 1/2	11	00			
2 MP ROBERTS	1 1/2	●	01	11	1/2	11	8
3 R DICKSON		10	●				
4 PJ CARROLL	00	00	●				
5 W HARPER	11	10		●			
6 DW PENMAN	00				●		

C	1	2	3	4	5	6	Pts
1 D CRICHTON	●	1 1/2	0				
2 R COCHRANE	1 1/2	●	0	1 1/2	1	11	
3 SR MITCHELL		1	●				
4 A FEINSTEIN	1 1/2	1 1/2	●	1	11		
5 W HARPER	0	0	●				
6 DV GIBBS	00	00	●				

D	1	2	3	4	5	6	Pts
1 K SEYFRIED	●			-			
2 AG STALKER		●		-			
3 MR McEWAN			●	00	-	11	
4 A MACMILLEN			11	●	-	1	
5 MF PEARCE	-	-	-	-	●	-	w/b
6 B SUDJIC		00	0	-	●		

B	1	2	3	4	5	Pts
1 K GORDON	●				0	
2 PR SMITH		●		00	00	
3 R TURNER			●			
4 J COPLEY		11		●		
5 JE WEIR	1	11			●	

MAJOR TOURNAMENTS

Controller: Sections A/C ; D Salter;

B	1	2	3	4	5	Pts
1 E THOMPSON	●	00	00	00	00	0
2 B MILLIGAN	11	●	01		00	
3 R DOWSON	11	10	●	11	1/2	5 1/2
4 F HALL	11		00	●	00	
5 J PARKER	11	11	1 1/2	11	●	7 1/2

C	1	2	3	4	5	Pts
1 R BEACON	●		1 1/2	11	11	
2 M MAY		●		11	11	
3 DR CUMMING	1/2	1	●		1/2	
4 CH BRINSON				●		
5 J TAYLOR			1/2		●	

D	1	2	3	4	5	Pts
1 I MACKINTOSH	●				-	
2 RG EBDON		●		00	-	
3 D COSGROVE			●	00	-	
4 P McCREA		11	11	●	-	
5 Z ZERKON	-	-	-	-	●	w/b

R	1	2	3	4	5	Pts
1 A ARMSTRONG	●		10		11	
2 A MacQUEEN		●				
3 J CASSIDY	10		●		11	
4 AC MORRIS				●		
5 F ANDRES	00		00		●	

Controller: Sections D/E ; J Anderson

QUARTETS 1991

(Controller - Ian V S Mitchell)

Q160	1	2	3	4	Pts
1 V A McINTOSH	●	00	00	00	w/b
2 M P FORD	11	●	00	00	2
3 R BRACON	11	11	●	10	5
4 J BELL	11	11	01	●	5

Q161	1	2	3	4	Pts
1 S J BACZKOWSKI	●	10	0	00	
2 A GORDON	01	●	1 1/2	1/2	3
3 S GUNN	1	1/2	●	10	
4 R TURNER	11	1 1/2	10	●	4 1/2

QUARTETS 1992

POSTAL KNIGHT	1	2	3	4	Pts
1 R STOKES	●	--	--	--	w/b
2 A WRIGHT	--	●			
3 D R CUMMING	--		●	01	
4 R TURNER	--		01	●	

POSTAL SHIELD	1	2	3	4	Pts
1 J G BLENCOVE	●		0	00	
2 S MACGILCHRIST		●	11		
3 DG McROBERTS	1	00	●	00	
4 I MACKINTOSH	11		11	●	

Q162	1	2	3	4	Pts
1 I SNEDDON	●	11	11	--	4
2 W CAMERON	00	●		--	
3 A MacQUEEN	00		●	--	
4 Z ZERKON	--	--	--	●	w/b

Q163	1	2	3	4	Pts
1 A G E BIRD	●		11		
2 J MERRIFIELD		●	11		
3 D FLEMING	00	00	●	00	0
4 T A H TAYLOR			11	●	

Q164	1	2	3	4	Pts
1 R DICKSON	●				
2 T McMORRAN		●	11	11	
3 G PLANT		00	●	1/2	
4 S R CAPSEY		00	1/2	●	

Q165	1	2	3	4	Pts
1 E A BAILEY	●	10	11	11	5
2 A ARMSTRONG	01	●	0 1/2	1 1/2	3
3 A TAYLOR	00	1/2	●	1/2	3
4 CA MACGREGOR	00	1/2	0 1/2	●	1

Q166	1	2	3	4	Pts
1 R J BURRIDGE	●	0			
2 A ARMSTRONG	1	●		01	
3 R PELLIS			●	10	
4 F ANDRES		01	01	●	

Q167	1	2	3	4	Pts
1 J McTAGGART	●	00	11		
2 S M YOUNG	11	●	11	11	6
3 J CASSIDY	00	00	●	11	
4 R B CROSBIE		00	00	●	

Q168	1	2	3	4	Pts
1 M P FORD	●		00	11	
2 J ANDERSON		●	0	11	
3 D R R ELLIS	11	1	●	11	
4 F R ROSS	00	00	00	●	0

Q169	1	2	3	4	Pts
1 R BEACON	●				
2 CA MACGREGOR		●	00		
3 S HILTON		11	●		
4 J BELL				●	

Controller:
Ian V S Mitchell
54 Strathtay Road,
Letham,
Perth PH1 2LZ

HANDICAP TOURNAMENT (by Allan Hislop)

Two new players joined the Handicap in the summer, bringing a total of 38. With games requests from other players, we have started 24 more games since May. So the Handicap Tourney is still proving very popular with 140 games in progress, 2 games per opponent. Remember that you can join the Handicap at any time and request games so long as you are a current member. As well as the prize money to the top six performers, which is judged on the best 5 results over at least 3 opponents, all results are now also sent to the Grading Officer.

The following are new pairings since last issue of the Magazine. Reference to it and the March issue will provide details of all current games in the Handicap.

Name	H/C No.	Pairings/Opponents H/C No.
R Beacon	188	v176, v236
D Cumming	197	v130, v206, v230, awaiting 1 more (Class 1 to 4)
A Armstrong	176	v130, 188, 236, 230, awaiting more (Class 1 to 4)
A Angus	236	v188, v176
N Talbot	230	v176, v197
B Milligan	206	v231, v197, v130
S Hilton	130	v176, v221, v197, v231, v206
G McKenzie	239	v238, awaiting 1 more (Class 3 to 5)
F Andres	231	v130, v206, v238
J Lange	221	v130
K Guthrie	238	v231, v239, awaiting 1 more (Class 6 to 4)

Last year's results included in SCCA gradings were:

A Swann	2	K Anderson	0	F Ross	2	H McKean	0
A Swann	½	J P Jack	½	J Cassidy	1	B Milligan	0
C McGregor	2	B Milligan	0	A Armstrong	1	B Milligan	0
P McCrea	2	Dr A C Brown	0	J Cassidy	2	J Lange	0

The following results have been received during 1992 so far. Please let me know if there are any errors so that I can correct them before submitting them for grading at the end of this year.

R Crosby	2	B Milligan	0	J Cassidy	2	A Armstrong	0
B Milligan	0	J Taylor	2	R Beacon	½	D R Cumming	½
R Beacon	2	R Burrige	0	G A Morton	2	R Beacon	0

G A Morton	2	P McGowan	0	R Crosby	2	K Mullen	0
M Pearce	1	B Milligan	1	G A Morton	2	R Ebdon	0
C McGregor	0	Dr A C Brown	2	F Andres	2	J Taylor	0
M Pearce	2	R Pells	0	G A Morton	1	S Young	0
J P E Jack	2	R Burrige	0	S Young	½	A Swann	½
B Milligan	1	R Crosby	0	P McCrea	2	R Pells	0
N Talbot	2	B Milligan	0	M Dunn	2	P R Smith	0
B Milligan	2	F Ross	0	A R Angus	2	A Craig	0
S Young	1	A Armstrong	0	N Talbot	2	B Milligan	0
S Young	2	J P E Jack	0	Dr AC Brown	2	J Taylor	0
P McCrea	2	J Lange	0	D R Cumming	1	A Swann	0
J Lange	1	B Milligan	0	A Armstrong	1	B Milligan	0

Scottish Centenary Invitation Tournament Book

(by Alan Borwell)

It has been decided not to proceed with the production of a printed booklet, mainly because the event concluded several years ago. Another problem is that all of the players did not provide any/many biographical details/photographs and therefore a book would have seemed incomplete.

However, we do plan to include many of the annotated games in a series of articles in future editions of this magazine. They will also include information about the participants, with the first article providing some background to the event and to the history of chess, and postal chess, in Scotland.

Some of the annotations were provided by the players, augmented by John Hawkes, who also provided annotations to other games. He will be checking these for more recent openings/games references etc, before publication.

The players who participated will continue to receive complimentary copies of this magazine until the series has been concluded. It is hoped to print the articles in the centre pages of the magazine so that they could be detached to form a separate booklet, if so desired.

We hope that the above arrangements will mollify any disappointment at the non-appearance of a separate book.

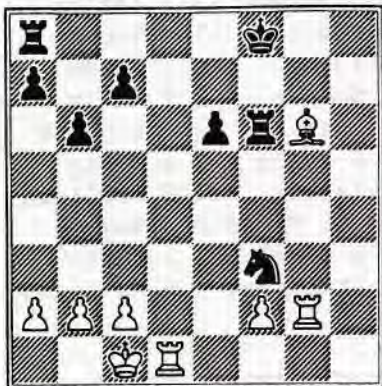
WINNING CONTINUATIONS

(selected by John Hawkes)

Solutions on page 72

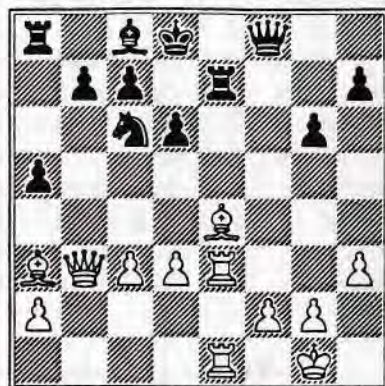
WHITE TO MOVE

A



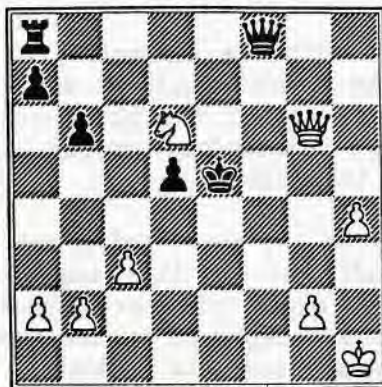
WHITE TO MOVE

B



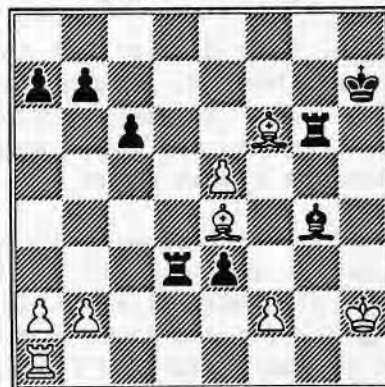
WHITE TO MOVE

C



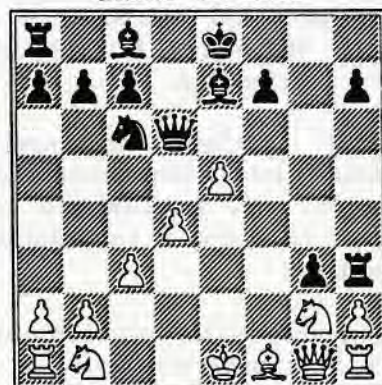
BLACK TO MOVE

D



BLACK TO MOVE

E



BLACK TO MOVE

F



SCOTTISH CCA LEAGUE 1992

DIVISION 1 (Controller - A. Swann)

A STREATHAM & BRIXTON

1	C A McNab	v	E1
2	S R Gillam	1/2 1/2	v D2
3	R A Inglis	v	C3
4	Mrs M Inglis	v	B4
5	R Haldane	v	F5

B KNIGHTS OF THE SQUARE TABLE

1	K Bowden	1/2 1/2	v	D1
2	J Cox		v	C2
3	J Clarke		v	F3
4	B Powell		v	A4
5	J Ryan	1 1/2	v	B5

C BLACK KNIGHT

1	G R Sprott	v	F1	
2	I Reeman	v	B2	
3	D R Reid	v	A3	
4	E Spencer	v	E4	
5	G Wood	1/2 1/2	v	D5

D PERTH CORRESPONDENTS

1	A P Borwell	1/2 1/2	v	B1
2	D A Gibb	1/2 1/2	v	A2
3	W Rutherford		v	E3
4	E A Horn		v	F4
5	J Falconer	1/2 1/2	v	C5

E KIRKCALDY KINGS

1	G D Pyrich	v	A1	
2	T Thomson	v	F2	
3	A Burnett	v	D3	
4	I Marshall	v	C4	
5	M C Grayson	0 1/2	v	B5

F HEDGARB

1	C R Beecham		v	C1
2	R V Stokes		v	B2
3	A Kilgariff		v	B3
4	M E McGhee		v	D4
5	D McRoberts		v	A5

DIVISION 2 (Controller - A. Wisbet)

A FLYING TRAPOTS

1	P Cassar	v	E1
2	D V Gibbs	v	D2
3	R D Hirsch	v	C3
4	M Nesbitt	v	B4
5	R Thornhill	v	F5

B KIRKINTILLOCH

1	S Rettle		v	D1
2	A Swann		v	C2
3	R Turner		v	F3
4	P McConnell		v	A4
5	W Harper		v	B5

C BRUTAL REALISM

1	J S Murray	v	F1
2	P Coffield	v	B2
3	A Thomson	v	A3
4	B Keenan	v	E4
5	S R Capsey	v	D5

D

DUNDER & VICTORIA "A"

1	J King		v	B1
2	F Stevenson		v	A2
3	J Anderson		v	B3
4	R Burnett		v	F4
5	G Mackenzie		v	C5

E HAWICK SUPERKINGS

1	D Kilgour	v	A1
2	A Armstrong	v	F2
3	J Taylor	v	D3
4	B Milligan	v	C4
5	L Kilday	v	B5

F WANDERING DRAGONS

1	D Crichton		v	C1
2	J Konarski		v	E2
3	C Donkin		v	B3
4	C Dowle		v	D4
5	C Stewart		v	A5

DIVISION 3 (Controller - M.C. McQueen)

A DUNDEE & VICTORIA "B"	B KNIGHT SAC
1 C McLellan v 11	1 T Tait v A1
2 B McLafferty 0 1/2 v D2	2 R Holland 01 v C2
3 B Malcolm v C3	3 I McKechnie 01 v D3
4 K Boyack v C4	4 P Tait 1 1/2 v D4
5 H Ferrie v D5	5 A Bennigan v C5

C EDINBURGH WEST	D ANYBODY ELSE
1 W McGhee v D1	1 D M Livie v C1
2 W M Grant 1 0 v B2	2 A T Hislop 1 1/2 v A2
3 G Mackay v A3	3 A Maxwell 1 0 v B3
4 B McBwan v A4	4 A Hind 0 1/2 v B4
5 S Young v B5	5 I V S Mitchell v A5



3rd SCOTTISH OPEN TOURNAMENT

There are three sections and the top two players in each section qualify for the Final:

Section 1	1	2	3	4	5	6	7	8	9
1 VD TAYLOR	●	1	1	1	1	0		1	1
2 V HARPER	0	●		0	1	1/2	1	1	
3 DR CUMMING	0		●		1	1/2	1/2	1/2	
4 A MORRIS	0	1		●	1		1	1	1
5 D FLEMING	0	0	0	0	●	0		1	0
6 GD PYRICH	1	1/2	1/2		1	●	1/2	1	1
7 SR MITCHELL		0	1/2	0		1/2	●		
8 F ANDRES	0	0		0	0	0		●	0
9 A MacMILLAN	0		1/2	0	1	0		1	●

Section 2	1	2	3	4	5	6	7	8	9
1 GR NIXON	●	0	1	1/2		1		0	
2 AD ARCHIBALD	1	●					1		
3 SM YOUNG	0		●		1/2	1		1/2	0
4 AD KILGARIFF	1/2			●		1/2			0
5 JM HERRIES		1/2			●	1/2		0	1
6 AGE BIRD	0		0	1/2	1/2	●			0
7 MF PEARCE		0					●		
8 RF TURNER	1		1/2		1	1			●
9 G LYBURN			1	1	0				●

Section 3	1	2	3	4	5	6	7	8	9
1 D SALTER	●		1/2			1	0	0	1
2 GE WALLWORK		●				1	1/2	1	
3 R MONTGOMERY	1/2		●	0		1	1	0	1
4 IF REEMAN			1	●		1	1/2	0	1
5 SF DRUNSFIELD					●	1			1
6 F PARK	0	0	0	0	0	●	0	0	1
7 MA MAY	1	1/2	0	1/2		1	●	1/2	1
8 I MACKINTOSH	1	0	1	1		1	1/2	●	1
9 JS CAIRNEY	0	0	0	0	0	0	0	0	●

SCOTTISH OPEN CONTROLLER:

D.M. Livie,
58 Elmore Avenue,
Sighthill,
GLASGOW G44 5AY.

1st SCOTTISH OPEN TOURNAMENT FINAL

	1	2	3	4	5	6	7	8	9	Pts
1 GE WALLWORK	●	0	1		1	1/2	1	1		
2 N DOWN	1	●	1		1	1	1/2	1		
3 N KILGARIFF	0	0	●	0	1/2	0	0	1	0	1 1/2
4 VD TAYLOR			1	●	1	1	1	1	1/2	
5 RG WALKER	0	0	1/2	0	●	0	0	0	0	1/2
6 CP BOTHAM	1/2	0	1	0	1	●	0	0	1	3 1/2
7 J TIMPERLEY	0	1/2	1		1	1	●	1	1/2	
8 V DILWORTH	0	0	0	0	0	1	0	●	1/2	1/2
9 RVM BAXTER			1	1/2	1	0	1/2	1/2	●	

2nd SCOTTISH OPEN TOURNAMENT

SEMI-FINAL

(Controller: Sections A & C - DM Livie)

(Controller: Section B - A Hind)

SECTION A	1	2	3	4	5	6	Pts
1 D SALTER	●	0		0	1	0	
2 CJ LENNOX	1	●	1		1	1	
3 A HIND		0	●	1/2	1	0	
4 J McLEAN	1		1/2	●	1	1	
5 A MacMILLAN	0	0	0	0	●		
6 R GIULIAN	1	0	1	0		●	

SECTION B	1	2	3	4	5	6	7	Pts
1 C McKay	●	0	0	0	0	0	0	0
2 P McCONNELL	1	●	0	0	0	0	0	1
3 J McLEAN	1	1	●	1/2	1/2	0	1	4
4 DM LIVIE	1	1	1/2	●	1/2	0	1	4
5 T THOMSON	1	1	1/2	1/2	●	1	1	5
6 M MITCHELL	1	1	1	1	0	●	1	5
7 MF PEARCE	1	1	0	0	0	0	●	2

SECTION C	1	2	3	4	5	6	Pts
1 A NUKHBJEE	●	1			-	1	
2 J COPLBY	0	●			0	-	1
3 CR BEECHAN			●			-	
4 GE WALLWORK		1		●		-	1/2
5 R STOKES	-	-	-	-	●		1/2
6 A McMILLAN	0	0		1/2		●	

OPEN TOURNAMENT
CONTROLLER:

D.M. Livie,
58 Elmore Avenue,
GLASGOW G44 5AY.

NEW BOOKS

 by Alan Borwell



Batsford

4 Fitzhardinge Street,
 London, W1H 0AH,
 Tel. 071 486 8484

Tactics in the Grünfeld
 by Gennady Nesis
 Figurine notation, paperback £12.99

An interesting book written by the former joint World Champion at correspondence chess.

It features 51 selected games, with innovations in several of the main Grünfeld variations. There are sections featuring The Pin, Enticement, Demolition, Clearing Lines, Back Rank and Tactical Ideas.

Unfortunately, there are errors in diagrams and notation (eg. page 55), which are disappointing for a book of this price.

Batsford Second Chess Course
 by Michael Basman
 Algebraic notation, hardback £9.99

An instructional book for near-beginners in the form of a series of tests on basic principles.

There are 162 very clear diagrams, with answers at the back of the book, with a scoring system.

Ideal for schools and as a Christmas present for keen youngsters just learning to play chess.

**Winning with
 The Closed Sicilian**
 by Gary Lane
 Figurine notation, paperback £12.99

Another welcome addition to the range of specialist opening books.

The Closed Sicilian has been a favourite variation of several ex-World Champions and has recently been used by GMs Ljubojevic and Short.

With so much detailed analysis of other Sicilian variations, the use of the Closed Variation can have surprise value. In my opinion, the definition "closed" is a misnomer as many variations lead to open positions, with tactical opportunities.

Gary Lane has followed his first book on the Ruy Lopez with another winner. It has 150 pages, extensive analysis and a good index.

Highly recommended, specially to e4 players who have difficulty in controlling affairs when faced with the normal counter-attacking open Sicilian variations.

The Complete Book of Gambits
 by Raymond Keene
 Figurine notation, paperback £12.99

A systematic catalogue of gambits, with an arbitrary verdict provided on the reliability of each!

I was interested in the inclusion of the Lesser Bishop's Gambit, with a game played by Norman Littlewood. After being on the receiving end of one of Norman's mesmeric tactical games years ago, he demonstrated to me, in the ensuing 2 hours, that 1 e4 e5 2 f4 exf4 3 Be2 was a win for White! Keene's award of only 2 stars would, I am sure, have been hotly contested by Norman.

Some openings are shown by different names, eg. I have always regarded 1 b4 as the Polish Opening but it is called Orang-Utang in this book (and others!)

I'm not convinced it is worth £12.99, especially when compared with the previous one reviewed - but that is a matter of taste!



Batsford

4 Fitzhardinge Street,
 London, W1H 0AH,
 Tel. 071 486 8484

Discover your Chess Strength
 by Raymond Keene
 Figurine notation, hardback £12.99

An instructive book which is similar to a compendium of "How Good is your Chess" articles.

The first game is one by our own Colin McNab played in the 1989/90 Hastings Challengers Tourney.

The honest, systematic playing through this book should provide a reasonably close assessment of playing strength, providing you take plenty of time!

Winning with the English
 by Zoltan Ribli & Gabor Kallai
 Figurine notation, paperback £13.99

The most expensive of the books reviewed in this Magazine, but well worth the extra £1 or so if you have difficulties either playing or replying to 1 c4.

There are some 80 games, many played recently, which cover all main variations. I was particularly interested in the Sicilian Reversed variation (75 pages!)

The Hungarian authors, highly regarded theoreticians have produced a very useful book (but why no McNab games!!)

ICCF RATING LIST - 1/7/92 to 30/6/93

Leading 109 players (with fixed ratings):

1	PENROSE, Dr J	GM	ENG	2720	37	KINDL, P	FRG	2590
2	UMANSKIJ, MM	IM	URS	2690		PIOCH, Z	GM	POL 2590
3	SANTOS, LMCP	IM	POR	2685		HOVDE, F	IM	NOR 2590
4	BANG, EBH	GM	DEN	2680		JENSEN, V	DEN	2590
5	SVENSON, U	IM	SVE	2670		RITTNER, HR	GM	FRG 2590
6	KREUZER, M	IM	FRG	2660		KORELOV, AP	IM	URS 2590
7	BARASCH, D		URS	2655		TSEJTLIN, MS	GM	URS 2590
8	GEET, Dr DD v	GM	NLD	2645		BLOCH, MW		URS 2590
9	SLOTH, J	GM	DEN	2635		FRANZEN, Dr J	GM	CSR 2590
10	TIMMERMANN, GJ	GM	NLD	2630	46	ARNLIND, EA	GM	SVE 2585
	BOUWMEESTER, HBF	GM	NLD	2630		GEFENAS, V	IM	URS 2585
	POULSEN, A	IM	DEN	2630		MAEDER, K-H S	IM	FRG 2585
13	KUJALA, A	GM	FIN	2625		STULL, N	IM	LUX 2585
14	ANTON V-M	GM	FRG	2620		ZHITKUS, RJ	IM	URS 2585
	ELWERT, H-M		FRG	2620		BERN, I		NOR 2585
	CHASIN, AJ	GM	URS	2620	52	RUBINTJIK, LJ	IM	URS 2580
	RABINOVITJ, NB		URS	2620		ABRAM, G	IM	USA 2580
18	VOLTJOK, AS	IM	URS	2615		BRYSON, DM	GM	SCD 2580
	KOROLJEV, SI	IM	URS	2615		KRAMER, HJ	GM	NLD 2580
	DEMAURO, JA		USA	2615		RAUPP, T		FRG 2580
	WEBB, S	GM	ENG	2615		ZILBERBERG, AS	IM	USA 2580
	KOPYLOV, IA	IM	URS	2615		SKROBEK, R	GM	POL 2580
23	DEVEL, AJ		URS	2610		VEINGER, I	IM	ISL 2580
24	LANKA, ZF	IM	URS	2605	60	ZRZAVY, J		CSR 2575
	MELEGHEGYI, C	GM	HUN	2605		KLOVANS, JJ	IM	URS 2575
	MICHAJLOW, AI	GM	URS	2605		SELINSKY, JI		URS 2575
	KRZYSZTON, J	IM	POL	2605		ZAGOROVSKIJ, VP	GM	URS 2575
28	GOLDENBERG, R	IM	FRA	2600		CORDOVIL, JMCM	IM	POR 2575
29	NORMANTAS, WP		URS	2595		EKEBJAERG, OC	GM	DEN 2575
	GODES, DR	GM	URS	2595		DOSTEROM, Dr JJ v	IM	NLD 2575
	NEŠIS, GJ	GM	URS	2595		STERN, DMB	GM	FRG 2575
	POVAH, NE	GM	ENG	2595	68	SEK, Z	IM	POL 2570
	KAURANEN, RK	GM	FIN	2595		SORENSEN, A	IM	DEN 2570
	GRUENBERG, H-U	GM	FRG	2595		WENDT, R		FRG 2570
	LECROQ, M	IM	FRA	2595		WIERSMA, T	GM	NLD 2570
	SANAKOJEV, GK	GM	URS	2595		OMELTJENKO, LJ	GM	URS 2570

Leading 109 players contd:

	BURGER, H	IM	FRG	2570	98	BADE, U	IM	FRG	2555
	DVILL, AD	IM	IRL	2570		TARNOWIECKI, Dr H	IM	DST	2555
	LANC, ING A	IM	CSR	2570		ALTROCHTER, Dr U	IM	DST	2555
	BERRY, FJ	GM	CAN	2570		LEKANDER, RA	IM	SVE	2555
	BINHAM, TF	IM	FIN	2570		SCHUH, G		FRG	2555
	PODKRAJSEK, J	IM	JUG	2570		KAPETANOVIC, A		JUG	2555
	LOGINOV, VN	IM	URS	2570		KOC, W		POL	2555
	PRIVARA, Dr I	IM	CSR	2570		McALPINE, KB	IM	SCO	2555
81	LORINCZ, Z		HUN	2565		DIM, TO	GM	URS	2555
	HEIJDEN, AC vd	IM	NLD	2565		LEIBER, B		FRG	2555
	LOEH, G	GM	FRG	2565		BUSSMEYER, H-J		FRG	2555
	SAKSIS, JA	IM	URS	2565		MULLNER, I		HUN	2555
	BOTTLIK, I	IM	HUN	2565					
	ROISMAN, AJ		URS	2565					
	BOLL, PAIM	IM	NLD	2565					
88	DANSTRUP, N	IM	DEN	2560					
	GOVBINDER, MJ	IM	URS	2560					
	HAAG, E	IM	HUN	2560					
	KELLER, JR	IM	FRG	2560					
	NIMTZ, Dr M	IM	FRG	2560					
	PALM, H	IM	FRG	2560					
	SITSCHIEW, AW		URS	2560					
	VOORMANS, J	IM	NLD	2560					
	PEDERSEN, S	IM	DEN	2560					
	SLAVTSCHEV, PK		BLG	2560					

1992 ICCF Rating List

Photocopied list available
(40 pages) for £3 + large
stamped addressed envelope (49p)
from Alan P. Borwell,
8 Wheatfield Avenue, Inchture,
Perthshire, Scotland, PH14 9RY.

Please send games (preferably
annotated) to Games Editor:

George Pyrich,
53 Dunnikier Road,
Kirkcaldy,
Fife, KY1 2RL.

**FRIENDLY
INTERNATIONALS**

Members wishing to play
in further friendly
internationals should
advise our Assistant
International Secretary
Colin Macgregor.

ICCF RATINGS - 1/7/92 to 30/6/93

All Scottish players as published :

Fixed Ratings (min 30 games or title)

Not Fixed Ratings

	Title	Rating	Games
BRYSON, DM	GM	2580	108
McALPINE, KB	IM	2555	21 †
MUIR, AJ	IM	2540	21
KILGOUR, DA	IM#	2490	95
GIULIAN, PM	IM#	2395	222
SHAW, AJ		2365	38
GILLAM, SR		2365	71
NORRIS, AJ		2360	63 †
CRAIG, TJ		2335	79
MARTIN, BJM		2335	63
PYRICH, GD		2335	198
STEVENSON, JAB		2330	35
WICKENS, TS	IM	2330	145
BORWELL, AP		2320	198
THOMPSON, ID		2320	58
JENKINS, DM		2310	41
MORRISON, GJ		2305	35 †
SPROTT, GR		2305	50
SEYFRIED, J		2270	32
RYAN, JMT		2250	42
GAWLIK, HJ		2245	106
BEECHAM, CR		2235	105
HISLOP, AT		2200	70
VALLWORK, GE		2200	76
CAMPBELL, IS		2195	91
MARKS, IS		2145	47
TANKEL, A		2125	39 †
LIVIE, GWG		2110	42
Ladies (Fixed Rating)			
HARTFORD, Mrs EA		1855	79

	Rating	Games
McNAB, CA	2500	23
JOHNSTON, TG	2245	23
WOOD, G	2235	23
KILPATRICK, R	2235	25
HAMMETT, MA	2175	22 †
LIVIE, DM	2155	28
BIRD, PROF GH	2145	21 †
MARSHALL, I	2140	24
GRANT, A	2130	28 †
NYE, DR VA	2105	24 †

ICCF Rating List 1992

Results from the following Scottish CCA events have been included by the ICCF Rating Commissioner:

Scottish Championship
Scottish CCA League Div 1
Scottish Centenary International Tourney
Scottish CCA 10th Anniversary Magazine
Tournament

Friendly Internationals (completed)
Scotland v Italy, Ukraine and USA
Friendly Internationals (in progress)
Scotland v Argentina, Australia
Austria, Ireland
and Israel

New matches started in 1992 to be included:
Scotland v Poland, Portugal,
Luxembourg, New Zealand
Algeria, Iceland, Latvia

‡ Titles to be confirmed
† no results in 1991

SCCA GRADING LIST 1/7/92

(by Michael Dyer)

This list incorporates the results of games as notified to the Grading Officer between 1/1/91 and 31/12/91, and will be effective for all games beginning between 1/7/92 and 30/6/93.

Those grades marked "*" are provisional, i.e. the player has less than 30 recorded results. A rating is not published until a player has at least 8 results.

A few changes have been included with this year's list, most noticeably the use of international (ICCF) ratings. When the SCCA Rating procedures were reviewed it was decided that any player having a published ICCF rating would have this rating used instead of a separately calculated SCCA grade. This was mainly because the ICCF rating is likely to be more accurate as it includes most of the games making up an SCCA rating and further international games not known to the SCCA Grader. Such ratings are marked "i".

Finally, if players have questions on any aspect of the rating system, please feel free to contact me. (Note my new address)

Name	Grade	Name	Grade
AIRD I	1845	BORLAND D	1395*
ALEXANDER M	1435*	BORWELL AP	2320i n
ANDERSON J (Dundee)	1660*	BOWN CJ	1635
ANDERSON J	1950	BOYLE CF	2005
ANDERSON KD	1575	BRADY JJ	1465*
ANDRES F	1115*	BRADY S	1600
ARMSTRONG A	1565	BRYSON DM	2580i GM
		BURRIDGE R	1635
BAILEY EA	1710*		
BARRETT T	1650*	CAIRNEY JS	1640
BAXTER RWM	2380 n	CAMERON W	1530
BEACON R	1785	CAMPBELL AWI	1810*
BEECHAM CR	2235i N	CAMPBELL IS	2195i
BEVERIDGE CTW	1425	CAPSEY SR	1525
BIRD AGE	1810	CARLIN J	1695*
BIRD GH	2145i*	CARROLL PJ	1365*
BIRRELL R	1680*	CASSAR P	1945*
BLENCOWE J	1690	CASSIDY J	1560*

Name	Grade
CHALMERS BW	1690
CHAPMAN BP	1720*
CLARK SL	1850*
COFFIELD P	1795
COOK WM	1760*
COOPER M	1885*
COPLEY J	1830*
COSGROVE D	1500*
CRAIG TJ	22351
CRICHTON D	1705
CROASDALE ME	1355*
CUMMINGS DR	1620
DEMPSTER DH	21951 n
DICKSON R	1770
DOCHERTY A	1270*
DONKIN C	1635*
DOWN NA	2150
DOWSON R	1555*
DUNN MH	1865*
DYER MT	1890
EADIED J	1475*
EBDON R	1485*
FALCONER JN	1665
FENNELLY DA	1840*
FERRY P	1630
FRYER K	1870*
GANNON M	1450*
GARVOCK JM	1300
GAWLIK HJ	22451
GIBB DA	1670*
GIBBS DV	1430*
GILLAM SR	23651
GILLESPIE DL	1645
GILLESPIE D	2055*
GILLIES N	1180*
GIULIAN PM	23951 N
GIULIAN RA	1765*
GOLIGHTLY I	1320*

Name	Grade
GOODWIN B	1580*
GORDON K	1780
GOWLAND S	1680
GRANT AG	21301*
GRANT BW	1545
GRANT PB	1555*
GRANT WM	1735*
GRAYSON MC	1750*
GREEN W	1285*
GROSE KJ	1335*
HALL F	1445
HALLIWELL TF	1975*
HAMMETT MA	21751*
HANLEY M	1165
HARPER W	1615*
HARVEY D	1800
HARVEY H	1115*
HERRIES JM	1750
HILTON SH	1435
HIND A	1825
HISLOP AT	22001
HULME W	1910*
HUTCHISON CM	1490*
HUTCHISON WJ	1455
INGLIS RA	2045*
INNES RM	1825
JACK JPE	1635
JACKSON PJ	1610
JENKINS DM	23101
JOHNSTON TG	22451
KEEMAN B	1660*
KILGARIFF A	1755*
KILGOUR DA	24901 n
KILPATRICK R	22351*
KING MM	1695*
KYNOCH RJP	1645*

Name	Grade
LEASK MB	1520*
LIVIE DM	21551*
LIVIE GWG	21101
LLOYD G	1610*
LOUGHRAN R	1325*
LUMSDEN JPL	1640
MacARTHUR JM	1825
MacGILCHRIST S	1870*
MacGREGOR CA	1290
MacKAY I	2060*
MacKENZIE K	1740*
MacKENZIE SG	1685*
MacQUEEN A	1535*
MACKIE WV	1620*
MACKINTOSH I	1760
MacLEOD MJ	1905
MARKS IA	21451
MARSHALL IH	21401*
MARTIN BJ	22351
MARTIN S	1695*
MASON T	1760
MAXWELL A	1730
MAYO M	1360*
McADAM D	1265*
McALPINE KB	25551 MN
McBETH MJ	1945
McCARTAN J	1585*
McCLELLAND K	1075*
McEWAN NR	1515*
McGHEE ME	1740
McGHEE M	1770*
McGLINCHEY W	1460
McGOWAN A	2145
McGOWAN P	2200
McINTOSH A	1255*
McINTYRE JW	1785
McKAY CC	1910*
McKEAN H	1455*
McKENZIE F	1245
McKENZIE LR	1750*
McKERRACHER D	1760

Name	Grade
McMENEMY J	1285
McMENEMY S	1295
McMILLAN W	1795*
McMONIGLE AL	1500*
McMORRAN T	1650
McNAB CA	25001* m
McNAB TJC	1710*
McQUEEN MC	1615*
McROBERTS DG	1515
McTAGGART J	1660
MERRIFIELD J	1490
MILLIGAN B	1265*
MITCHELL IWS	1580
MITCHELL M	2190
MITCHELL SR	1715*
MOIR PJ	1570*
MONTGOMERY RS	1715*
MOOHAN M	1865
MORRISON GJ	23051 m
MORRISON T	1535
MORTON GA	2025
MUIR AJ	25401 Mn
MUIR PS	1710*
MURRAY JS	1800
NEIL D	1940
NISBET A	1580*
NORRIS AJ	23601 mN
O'DONNELL J	1765
PARKER J	1720*
PARSONS DG	1430
PEARCE MF	1685
PELLS R	1435
PENMAN DW	1625
PETRIE A	1270*
PROUDLER VA	1530*
PYRICH GD	23351
QUINN D	1985

Name	Grade
REEMAN IF	2010
REID DR	1950
REID G	1655
ROACH WS	1890
ROSS DI	1625*
ROSS FR	1430*
ROSS M	1960
RUTHERFORD W	1985*
RYAN JMT	22501
SADOWSKI Z	1755
SALTER D	1925
SAVAGE D	1740
SEYFRIED J	22701
SEYFRIED K	1800
SHANKLAND J	1705*
SHAW AJ	23651 n
SNEDDON G	1475*
SNEDDON I	1890
SPROTT GR	23051 n
STALLARD J	1390
STEPHENSON L	1620
STEVENSON JAB	23201
STEWART KWC	1945*
STOKES RW	1695
SWANN A	1795
SWYSTUN MA	1980
TAIT T	1790*
TANKEL A	21251
TAYLKOR J	1370*
THOMPSON E	1835*
THOMPSON ID	23201
THOMSON A	1520*
THOMSON T	2085
THORNTON T	1235*
TURNER RF	1830

Name	Grade
WALKER JM	1475
WALLIS G	1610
WALLWORK GE	22001
WARD J	1510
WATSON J	1630
WAUGH PCH	1365
WHITTAKER IP	1795
WICKENS TS	23301 Mn
WILSON A	1405
WILSON AR	1585*
WILSON I	1380*
WOOD G	22351*
YOUNG SM	1660*

* indicates a provisional rating,
ie less than 30 results,
i indicates an ICCF rating

G ICCF GM title
M ICCF IM title
m ICCF IM norm
N SCCA Master title
n SCCA Master norm



Overseas Subscribers
Subscription for one year's
editions of the Scottish CCA
magazine can be obtained from
the Editor for £7 p.a.
(inclusive of postage).

GAMES SECTION



Selected by

GAMES EDITOR
George D. Pyrich,
53 Dunnikier Road,
Kirkcaldy,
Fife, KY1 2RL.

Please send games
(preferably
annotated) to
Games Editor

This is one of my two top board games against a very strong opponent from the Liverpool Atticus Club - the other one was a typically double-edged Schliemann which ended in an honourable draw!

1	e4	c5
2	Nf3	e6
3	d4	cxd4
4	Nxd4	a6
5	Bd3	g6

We kick off this time with a sparkling attacking effort from our President, Alan Borwell, in a recent British League Championship game. Annotations by Alan.

British CC League Championship 1991/2

White: A P Borwell (York) 2320
Black: C Woodford (Atticus) 2375

Sicilian Defence B42

For many years before moving to Scotland and for some time after, I played in the BCC League for York and have been a Vice-President of my home club ever since. It was nice this year to be invited to return to the fray following York's promotion to the top division.

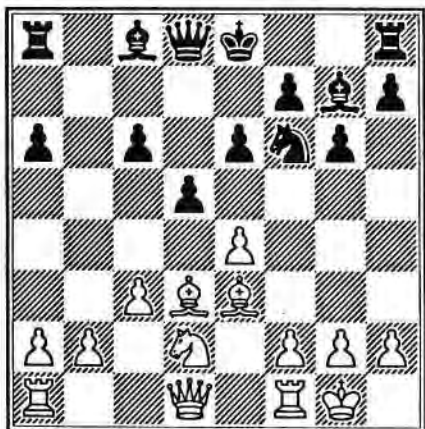
The Kan variation main line. Black has a number of other alternatives to choose from, including Bc5, Nc6, Nf6 or Ne7. The move played was seen recently in a game van der Wiel - Bosboom, Netherlands Champ 1991. It continued 6 0-0 Bg7 7 Be3 Nc6 8 Nxc6 bxc6 9 Nc3 Nf6 10 Na4 d6 11 Qe2 Nd7 12 Rad1 0-0 13 c4 Qc7 14 Qd2 Bb7 15 f4 Rad8 16 Bc2 d5 17 Qf2 which is

fine for Black. I felt that White had made too many Q moves so I decided to innovate at move 9!

- 6 0-0 Bg7
 7 Be3 Nc6
 8 Nxc6 bxc6
 9 c3 d5
 10 Nd2

This seemed the most logical response as Black can hardly capture on e4, isolating his c-pawn and leaving holes in his position.

- 10 Nf6



- 11 Bc5!?

The first really tough decision. If it prevents early K-side castling by Black coupled with a central breakthrough, then it would be a success.

On the other hand, if White's black-squared bishop embarks on a time-consuming sortie without reward, then the advantage would swing in favour of Black!

Alternative moves were 11 f4 or Qa4, neither of which seemed to offer much potential advantage.

- 11 Nd7

The alternative seemed to be 11 ... Rb8.

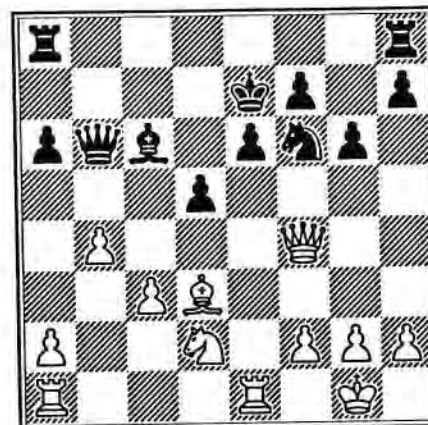
- 12 Ba3 Qb6?!

I thought that 12 ... Ne5 was more promising when White has to choose between Be2 or Nb3, allowing Black to exchange one of his bishops.

- 13 exd5 cxd5

Obviously not 13 ... exd5 when 14 Qe2+ or Re1+ are very good for White.

- 14 Qa4 Bb7
 15 Rfe1 Bc6
 16 Qh4 Bf6
 17 Qf4 Be7
 18 Bxe7 Kxe7
 19 b4 Nf6



A key position. Here I considered Nf3, Nb3, a4 and the move eventually selected.

- 20 Re3!

It seemed to me that this was the most direct means to break open the centre. I expected 20 ... Qb8 21 Qh4 Rhd8 22 Nb3 Bb5 23 Nd4 Qb6 24 Rael Bxd3 25 Rxd3 (ΔRf3). However, Black played the more aggressive but loosening...

- 20 d4?
 21 Nc4 Qd8
 22 Na5!

Giving Black's Q no respite and therefore he is unable to capture White's R. Also possible was 22 Ne5 but then the Black bishop could have retreated to b7 or e8.

- 22 Rc8
 23 Nxc6+ Rxc6
 24 Rf3

Now Black must lose material. I wondered here whether his best chance might have been to retreat his King, exchange Queens on f6 and then capture on c3. However...

- 24 Nb5?

Better was 24 ... Nd5 but it was not good enough after 25 Qh4+ f6 26 c4 g5 27 Qh6 Nf4 28 Qg7+ Kd6 29 c5+ Kd5 30 Bxh7 etc.

- 25 Qxf7+ Kd6
 26 Re1!

Better than less direct lines. Not 26 g4? Rc7! trapping White's Queen.

- 26 Qc8

Here I considered 27 c4 Rc7 28 c5+ Kd5 29 Bxa6 Rxf7 30 Bxc8 Rxf3 31 Bxe6+ Kc6 32 gxf3 with a winning ending. However, even more devastating is...

- 27 Qa7!! dxc3?

Desperation and losing immediately.

Other less dramatic but, nevertheless, losing moves were: 27 ... Rd8 28 Qxd4+ Ke7 29 Qh4+ Ke8 30 Qg5 wins; or 27 ... Re8 28 Qxd4+ Ke7 29 Qh4+ Kd6 30 Rf7 e5 31 g4 wins; or 27 ... Rxc3 28 Qxd4+ Ke7 29 Bxa6 Rc1 30 Qh4+ Kc8 31 Bb5+ wins; or 27 ... e5 28 cxd4 e4 29 Bxe4 Re8 30 Rfe3 wins.

28 Rd1!

Of course 28 Bxg6 also wins but this quiet move is even more lethal. There is no way now that Black can prevent mate.

28 Rc7
29 Bxg6+ Resigns
1 0



Please send games (preferably annotated) to Games Editor:

George Pyrich,
53 Dunnikier Road,
Kirkcaldy,
Fife, KY1 2RL.

Continuing in the attacking vein, Martin Roberts annotates 2 nice games from an SCCA Premier tourney.

SCCA Premier Section B 1992

White: W S Roach
Black: M P Roberts

Alekhine's Defence, Exchange
Variation B04

1 e4 Nf6

I arrived at this defence as a result of the epic 13th game of the Fischer-Spassky match which took place while I was in Bogota, Columbia. The moves were displayed on a giant scoreboard in a main street and the match was followed avidly in that country, especially in the coffee-house "Capablanca". I wonder if it still exists.

2 e5 Nd5
3 d4 d6
4 c4 Nb6
5 exd6

The Exchange. White's main problem against 1 ... Nf6 is to decide which of numerous playable lines to choose from. 4 Nf3 offers safety plus, but the Exchange Variation should also give White the advantage.

5 cxd6

5 ... exd6 is more solid, but does not offer Black counter chances.

6 Nc3 g6
7 Be3 Bg7
8 Rc1!?

The main line (BCO 2) is 8 Bd3 0-0 9 Nge2 Nc6 10 0-0 Bg4 11 f3 Bf5 12 b3 Bxd3 13 Qxd3 e5, Minic-Gipslis 1971. The idea of the text seemed to be to follow up with 9 d5.

8 Nc6
9 Be2 0-0

After much agonising, 10 d5 was awaited uncomfortably and I wondered if this should have been stopped with 9 ... d5.

10 Nf3 Bg4

White's 10th baffled me. My problem bishop gets buckfree development and White's queen rook looks misplaced.

11 b3 d5
12 c5 Nc8

If White's rook were still at a1 and his King castled, this would be a textbook position.

13 b4 a6
14 0-0 e6

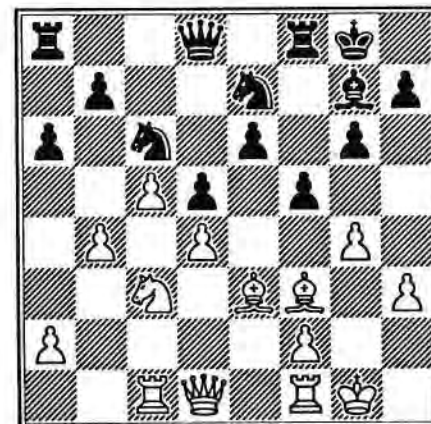
From here on, the position more or less plays itself.

15 h3 Bxf3

15 h3 was a wasted move. The bishop usually exchanges on f3 in any case and White's play should be Q-side.

16 Bxf3 N8e7
17 g4 f5

Threat ... f4. ("A White g4 is usually premature" - W. Buchanan)



18 Ne2 fxe4
19 Bxe4 Nf5
20 Bxf5 Rxf5

I thought 20 Qd2 more likely.

21 Ng3 Rf7

21 ... Qh4, exchange-sac for attack, was very tempting.

22 Qg4! Qd7
23 a3 R8f8
24 Ne2 Rf3
25 Rcd1 Qf7

White can only wait while Black builds up the pressure.

26 Kh2 Rf5

Intending if 27 Rg1 then 27... e5.

27 Ng3 h5
28 Qe2 Rf3
29 Rh1?

29 h4 was essential.

29 h4
White resigned
0 1

If 30 Nf1 Nxd4.



SCCA Premier Section B 1992

White: R. Dickson
Black: M F Roberts

Larsen's Opening A01

1 b3 e5
2 Bb2 Nc6
3 e3 d6

4 Bb5 Bd7
5 Ne2

I had given a conditional continuation 5 Nc3 a6 6 Bxc6 Bxc6 7 Nf3 Nge7 8 Qe2 Ng6. The reason for the move chosen was not clear to me.

5 a6
6 Bxc6 Bxc6

So I have the two bishops.

7 d4 Qg5

None of the alternatives appealed.

8 Rg1 Rd8

His eighth was a surprise; I expected Ng3.

9 d5 Bd7
10 Nbc3 Nf6
11 Qd2 Be7
12 0-0-0 Qh6

So that if 12 f4, I would not have to capture.

13 h3 c6

Both offensive (the c-file) and defensive, planning Nxd5 in reply to g4.

14 Kb1 cxd5

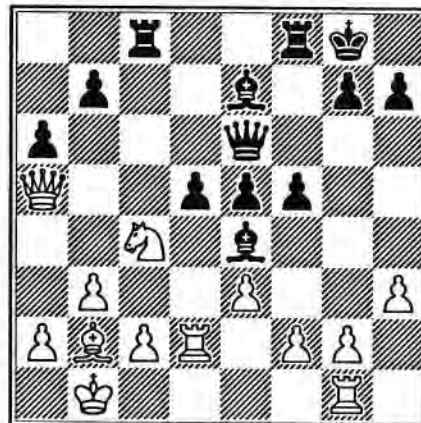
White was already heading for victory in our other game, otherwise he might have played a little more boldly with a kingside pawn storm.

15 Nxd5 Nxd5
16 Qxd5 Bc6
17 Qa5? 0-0
18 Ng3 f5

White's knight embarks on a tour. Interestingly it emerged that White was in the process of moving house.

19 Nf1 Qe6
20 Nd2 Rc8
21 Nc4 Be4
22 Rd2 d5

I now expected a further knight move, to e5, with complications. Instead came a move which at first seemed to simplify to a drawish ending, until a pleasant surprise revealed itself.



23 f3?? dxc4
24 fxe4 c3!

And not the tame ... cxb3. Now if 25 Bxc3 Rc5 26 Qb4 a5 27 Qxb7 Rxc3 28 Rd7. White has two pawns for the piece and some threats against g7, but not enough.

25 exf5 Rxf5
26 Bxc3 e4
White resigns
0 1



Next David Cumming provides an in-depth analysis of a recent game played in the Handicap Tourney which features a topical line of the French Defence.

SCCA Handicap

White: A. Swann
Black: D.R. Cumming

French Defence, Tarrasch Var
C07

1 e4 e6
2 d4 d5
3 Nd2 c5
4 exd5 Qxd5
5 Ngf3 cxd4
6 Bc4 Qd6

The main line, accepted as best.

7 0-0 Nf6
 8 Nb3 Nc6
 9 Nbx4 Nxd4
 10 Nxd4 Bd7
 11 Bb3 Qc7
 12 Bg5 Be7

Departing from theory.

13 Re1

An interesting alternative might have been the immediate knight sacrifice, eg. 13 Nf5!? exf5 14 Re1 Kf8 (14 ... Bc6? 15 Bxf6! gxf6 16 Qh5! with considerable compensation to White I think, well just look at the 3 black pawns trebled on the f-file and the vulnerable King!) 15 c3. With Black's King stuck on f8, Black's king's rook shuttered in on h8 and the doubled black f-pawns, this surely gives White some compensation!

13 0-0
 14 Nf5! Bd8

The only good reply. 14 ... Bc6? fails to 15 Nxe7+ Qxe7 and the Queen is stranded behind the knight (else Bxf6 gxf6) until Black breaks the pin by ... h6 and ... g5, weakening the pawn cover around the black King.

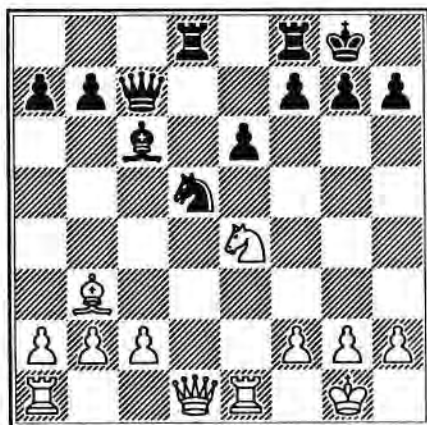
15 Nd6 Nd5!

Again I was tempted to play the immediate 15 ... Bc6? here but couldn't because of 16 Nxf7! Rxf7 17 Bxe6 with Black losing out materially plus with some of his King's pawn cover being removed by the exchange.

16 Bxd8 Raxd8
 17 Ne4

Not 17 Bxd5? exd5 18 Qxd5 Bc6! 19 Nb5 Qb6, losing the white knight for the pawn.

17 Bc6!



Good move. Developing the "problem" queen's bishop on the c6-h1 diagonal AT LAST, uncovering support of the d5 knight by the rook, as well as adding support to the knight by the bishop itself, and threatening a discovered

attack on White's Queen by moving the knight away on a subsequent move.

18 Qf3 Nf4?!
 19 Qg3! Nd5
 20 Qh4

White wishes to preserve his Queen with hopes of some future attack on Black's King, perhaps hoping to play something like 21 c4! Nb6? 22 Bc2!, with the idea of playing Nf6+, "discovering" the bishop eyeing h7 and for the next move White playing Qxh7+ mate! My next move nipped this idea in the bud. The immediate 20 Nf6+?! achieves nothing, my analysis runs: 20 ... Kh8 (20 ... Nxf6?? 21 Qxc7!) 21 Nxd5 Qxg3 22 hxg3 Bxd5 23 Bxd5 Rxd5 24 Rad1 Rfd8 25 Rxd5 Rxd5 with a more favourable endgame for Black.

20 Qf4!
 21 Qh3?!

Dubious move. White should exchange Queens here, conceding a slight advantage to Black.

21 Nf6

22 g3??

Gross blunder and the losing move! White boxes in his Queen on h3 and creates fatal light-squared weaknesses around his King which, thanks to my light-squared bishop (handily placed on c6) and my Queen, I very quickly take advantage of! After this move, White must AT LEAST accept the loss of one of his minor pieces. Better was 22 Nxf6+ Qxf6 with a small advantage to Black.

22 Qf3!
 23 Nxf6+?

The lesser evil was 23 Qg2 Bxe4 24 Qxf3 Bxf3, accepting the loss of the knight.

23 gxf6!

Threatening 23 ... Qh1+ mate.

24 Kf1?

White's last chance to prolong the agony was 24 Bd5.

24 Rd2
 White resigns
 0 1

Mate or loss of queen follows.



The next game is a most welcome contribution by a new CC player from this year's League Div. II. Jonathan King shows his abilities, not only in the quality of play, but also in the excellence of his annotations.

SCCA League 1992

White: J King (Dundee & Victoria)
Black: S Rettie (Kirkintilloch)

French Defence C12

1 e4 e6
2 d4 d5
3 Nc3 Nf6
4 Bg5 Bb4

The MacCutcheon Variation. A relatively unexplored option, having only a fraction of the analysis the similar Winawer does.

5 e5 Bxc3

Rare. The usual move order is 5 ... h6 first Δ 6 Bd2 Bxc3 7 Bxc3/bxc3 Ne4. A possible reason for the change is to avoid the bishop capture lines. Maybe Black feared 8 Ne2!? or 8 Bd2!?

6 bxc3 h6
7 Bc1

The drawback of Black's idea. With the dark-squared bishop already committed, White's bishop on c1 has two wonderful diagonals c1-h6 and d3-f8. Equally importantly, it is out of harms way from any knight coming to e4.

7 Nfd7

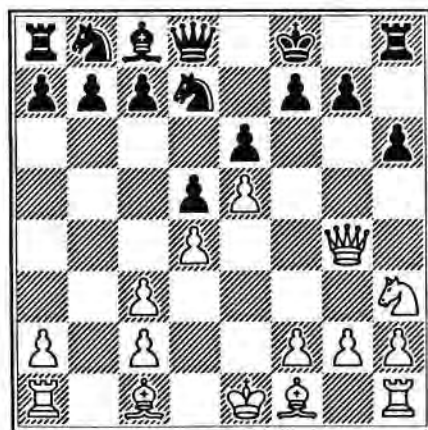
A courageous, pragmatic decision. Ideally Black would surely want the knight on e4 but White could gain time through attacking it. However, to retreat virtually concedes 5 ... Bxc3 was a mistake.

8 Qg4 Kf8

Whether Kf8 or g8 is the usual MacCutcheon problem.

9 Nh3

9 h4 is also very tempting.



9 b6

A thematic move in the French, Δ Ba6, exchanging off his problem piece. Alternatives: 9 ... f5 loses to Qg6 with Nf4 to follow. The natural-looking 9 ... c5 also seems dubious. Some sample lines: 10 Bd3 Nc6 11 Nf4 Qa5 12 Bd2 Qb6 13 Nh5 g6 (not ... Rg8 14 Ng7) 14 Bxg6 Nxe5 15 dxe5 Nxe5 16 Qf4 Nxc6 17 Qf6 threatening 18 Bxh6; 11 ... cxd4 12 cxd4 Nxd4 13 Ba3+ Kg8 14 Nxe6; 11 ... Qb6 12 0-0 cxd4 13 Ba3+ Ne7 14 cxd4; 13 ... Nc5 14 cxd4 Nxd4 15 Ng6+.

Back to the game.....

10 Nf4 c5
11 h4 Qe7

Alternatively 11 ... Nc6 12 Bb5 cxd4 13 Bxc6 Ne5 14 Ng6+ wins a rook; 12 ... Qc7 13 Qxe6; 12 ... Bb7 13 Rh3 cxd4 14 Bxc6 Nxe5 15 Nxe6 fxe6 16 Qxe6 with mate to follow.

12 Rh3 Rg8
13 Rf3 Ke8

Forced.

14 Bd3?!

Overly ambitious. White should be content with 14 Nh5 Qf8 15 Bd3 Nc6 16 Bh7 Nxe5 17 dxe5 Nxe5 18 Qg3 Nxf3 19 gxf3 Rh8 20 Nxc7+ Kd8 21 Bd3.

14 cxd4

Best. Alternatively 14 ... g6 15 Nxc6 fxc6 16 Bxg6+ Kd8 17 Rxf7 Qxf7 (17 ... Qe8 18 h5 Nf8 19 Bg5 +-) 18 Bg5+ Qe7 19 Bxe7+ Kxe7 20 h5 +-; 14 ... Nc6 15 Nxc6 Ne5 16 dxe5 Nxe5 17 Nxc7+. As White has tactical nuances like Bb5+, Ne6+ and Bf4 pinning the knight. Rxc7 is forced. After 17 Qxc7, White is a piece up but Black has some drawing chances (possibly?)

15 Bb5 a6?

15 ... Kd8, avoiding checks on g7/f6. Also leaves free a6 for the bishop and possible pressure on the white King.

16 Bxd7+ Bxd7

If 16 ... Nxd7 17 cxd4 Qb4+ 18 c3 Qc4 ±, Δ 19 Nh5 Nxe5 20 Nf6+ Ke7 21 Ba3! +-

17 cxd4

17 Nh5, threatening f6, is also strong. Black's best may be Kd8 with possible exchange sacrifices with some play on White's King and a strong centre. However, as Black gave the conditional Nc6, I thought White's advantage remained more clear and simple after 17 cxd4. Incidentally, Black's best after 17 cxd4 seems to be 17 ... Qb4+ 18 c3 Qc4 19 a4 unclear (not 19 ... Bxa4 20 Rxa4 Qxa4 21 Nxe6 ±)

17 Nc6
18 Ba3 f5

Forced. If 18 ... Nb4
19 Kf1.

19 exf6 ep Qxf6
20 Nxd5
1 0

If 20 ... Qxd4 21 Qg6+ Kd8
22 Rd1 Ne5 23 Be7+ Kc8
24 Rxd4 Ng6 25 Rc3+ wins.
Thus, Black's best try, though ultimately futile, was 20 ... exd5 21 Qh5+ g6
22 Qxd5 Qg7 23 Kf1 Ra7
24 Rf7!! Qxf7 25 Re1+ Be6
26 Rxe6 Ne7 27 Bxe7 Rxe7
28 Qxa8 Kd7 29 Qc6+ Kd8
30 Qd6+ Ke8 31 Qb8+ Kd7
32 Rd6+ mate. All very forcing.

In light of this, something else should be tried on move 19 : 19 ... Qf7 20 Nh5 g6 21 Ng7+ Kd8 22 Qf4, which is unclear concerning the extent of White's advantage; or 19 ... e5! 20 Qh5+! Qf7 21 fxg7! Be6 (not ... exf4 22 Rxf4 1-0), which seems more than Black deserves, though surely White must still be better (eg. 22 dxe5 Rxc7 23 Nxe6! Qxh5 24 Nxc7+ winning).



We finish off this time with one of my recent efforts played in the "B" Group of our own international tourney.

SCCA Magazine 10th Anniversary Tourney

White: George Pyrich (SCO)
Black: Kari Koistinen (FIN)

Slav Defence D18

1 c4 c6
2 Nf3 d5
3 d4 Nf6
4 Nc3 dxc4
5 a4 Bf5
6 e3 e6
7 Bxc4 Bb4
8 0-0 Nbd7

The alternative 8 ... 0-0 was played by Aksel Ros (DEN) against me in the same

tourney continuing 9 Qe2 Bg4
10 Rd1 Qa5 11 Bd2 Rfd8
12 h3 Bh5 13 Bd3?! Bxf3
14 Qxf3 Nbd7 15 Qe2 e5
16 dxe5 Nxe5 17 Bc2 Qc5
18 Be1 Ng6 19 Rxd8+ Rxd8
20 Rd1, draw agreed. Black might have played on as White has to play carefully to hold equality.

9 Nh4

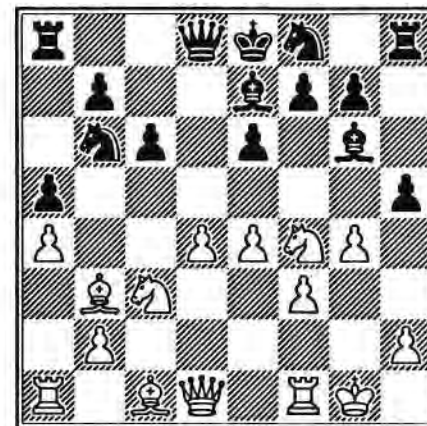
Varying from the 9 Qb3 I had tried in the 4th European Teams Prelims against V.L. Cordeiro (POR) - that had continued 9 ... a5
10 Na2 Be7 11 Nh4 Be4
12 Nc3 Nb6 13 Be2 0-0
14 Nf3 Nbd5 15 Nxe4 Nxe4
16 Qxb7 Nb4 17 Ne5 Rc8
18 Bf3 Ng5 19 Bd2 Nxf3+
20 gxf3 Bd6 21 Bxb4 Qg5+
22 Kh1 Bxe5, draw agreed. Hardly very original as the game Kasparov - Nikolic, Reykjavik 1988 had previously continued 23 dxe5 Qh5 24 Bxf8 Qxf3+ with a draw.

9 Bg4
10 f3 Bh5
11 g4 Nd5

The alternative 11 ... Bg6 leaves White with a choice between 12 Nxc6, 12 Qb3 and 12 e4.

12 Ng2 Bg6
13 Na2 Be7

14 e4 N5b6
15 Bb3 a5
16 Nc3 h5
17 Nf4 Nf8



18 Be3

Varying at last from the game Tukmakov-Elvest quoted in Informator 43 which had gone 18 gxh5 Bxh5 19 Be3 Bd6 20 Qd2 g5!? with complications. Black might have tried 20 ... Qh4 with threats on the h-file, thus my decision to vary - now if Black exchanges on g4 then the White Queen can come to f3.

18 Bg5
19 Qd2 Nbd7
20 Rad1 Qb6!?

Resorting to tactics to unravel his pieces, particularly the knight at f8.

21 Ba2 e5
22 Nfd5

Virtually forced as 22 dxe5 drops a piece to Bxf4 and 22 Nxb6 lets the knight at f8 into play.

22 Bxe3+
23 Nxe3 exd4
24 Qxd4 Qxd4
25 Rxd4 Ne6?

Playing into White's hands. Better was 25 ... h4 and if 25 f4 Ne5 or 25 Nxb6 Nh7.

26 Bxe6 fxe6
27 Nc4 Nc5
28 Ne5 Bf7
29 g5!

Maintaining the positional bind.

29 Ke7
30 Rfd1 Be8

White threatened Rd7+.

31 h4 Rf8
32 Kf2 Rc8
33 Ke3 Rc7
34 Ne2

Please send games (preferably annotated) to Games Editor:

George Pyrich,
53 Dunnikier Road,
Kirkcaldy,
Fife, KY1 2RL.

Utilising the last piece for the threat Nf4/g6+ along with Rd6 forces Black to seek relief in the endgame. One line is 34 ... b5 35 axb5 axb5 36 Nf4 Rg8 37 Rd8 Nd7 38 Nxd7 Kxd8 39 Nf6+ Ke7 40 Nxb6 Kf7 41 Rd6 Bd7 42 Nxb5 winning for White.

34 Nd7
35 Rxd7+! Rxd7
36 Rxd7+ Bxd7
37 Ng6+ Kf7
38 Nxf8 Kxf8
39 Kd4!

The dominant white King secures the win.

39 c5+
40 Kxc5 Bxa4
41 Nd4 e5

If instead 41 ... Ke7 42 e5 ties things up before going after the queenside pawns.

42 Ne6+ Kf7
43 Nd8+ Ke7
44 Nxb7 Ke6
45 Nxa5 Bd1
46 Nc4 Bxf3
47 Nd6 Resigns
1 0

White simply pushes the b-pawn.



BITS 'n' PIECES

by Ian Marks



"It's a mystery to me -
the game commences"
Dire Straits,
"Private Investigations"

One of the attractions (for me, anyway) of CC is that - often - you just don't know how a game is going to turn out. You find yourself playing not to win - or draw - but just to see what's going to happen next, what's on the next card; a 2-year mystery woven on 64 squares.

This game is a case in point. I spent most of my time trying to dig my way out of a self-inflicted bad position. As the middle-game unfolded I found myself playing more or less just to see what was round the corner. I couldn't have predicted the outcome, and just when I thought I had an idea of how it was going to finish - one move before the end (!) - I got it wrong!

Take your seat for the mystery tour and see if you can do any better.

White: Michael Dyer
Black: Ian Marks

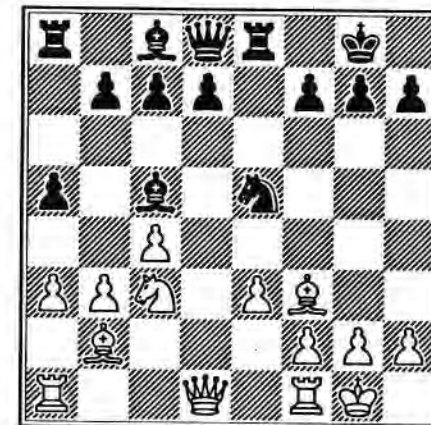
Scottish CC Ch Candidates
1987-89

Budapest Gambit A52

1 d4 Nf6
2 c4 e5
3 dxe5 Ng4
4 Nf3 Bc5
5 e3 Nc6
6 a3 a5
7 Nc3

Paul McGowan tried 7 b3 against me in the same event - see last issue.

7 0-0
8 Be2 Ngxe5
9 b3 Re8
10 0-0 Nxf3+
11 Bxf3 Ne5
12 Bb2



N!?

I took a long, hard look at the position and reflected: if Bb2 was the best move, it would be played all the time, but since it isn't played all the time (12 Be2 is usual), it can't be the best move...

"Logic, n. The art of thinking and reasoning in strict accordance with the limitations and incapacities of the human misunderstanding."

Ambrose Bierce

"The Devil's Dictionary"

By the time I had finished staring, I had convinced myself that 12 ... Nxf3+ would only further White's development at the expense of Black's, so ...

12 Ra6!?

13 Ne4 Ba7

One of the reasons for ... Ra6.

14 Qe2

NOW that White has moved his Q, it was time for 14 ... Nxf3+.

14 Qh4

"I figured if he didn't take it off last move he wouldn't take it now."

Bobby Fischer

I obviously have *something* in common with The Great Man.

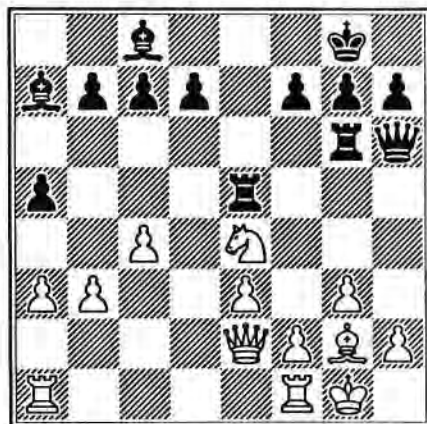
15 Bxe5 (!)

(!) = interesting idea. Mike gives up his *other* B in order to dig in with the one that *should* have been taken.

15 Rxe5

16 g3 Rg6

17 Bg2 Qh6?



Quite apart from the fact that Black's left-hand side of the board is in danger of collapse from the weight of his heavy pieces, this move, sticking the Q out of the way and neglecting the centre, is real X-certificate stuff. (Would you let your kids see a move like this?)

17 ... Qe7 was "obviously" indicated, but, as always, I have A Plan, viz. ... d6, ... Rh5, ... Bh3 and an "attack" against h1/h2, but, as Mike ably demonstrates, this is one "plan" fated never to get off the ground.

"Plans get you into things but you got to work your way out,"
Will Rogers

The move played suggests a protruding forehead and dragging knuckles. A lesser neanderthal would have seen that 17 ... Qe7 18 Nd2 (Qf3? d5! wins material; Nc3 c6, idea ... d6 etc) d6, idea ... Bg4 looks O.K. for Black.

18 Rad1 d6

19 Rd5+

White dominates the midfield. It was all I could do to stop myself from resigning, but "even in apparently hopeless situations something can still be done" - Garry Kasparov.

19 Rge6

After 6 days' thought, but really a process of elimination move. 19 ... Rxd5 20 cxd5 leaves the Q-side at White's mercy, e.g. 20 ... Bg4 21 Qb5 (spot the threat!). On the other hand,

to allow Rxe5 dxe5 is to abandon the d-file and back 2 ranks to White. So we fall upon the text move, which improves the position of the R AND threatens ... Rxe4 (more by luck than design).

20 Rxe5

20 Nc3!? - Black doesn't appear to have any cheapos on e3. I'm happy to get a couple of pieces exchanged and that N on e4 provides me with a bit of counterplay over the next few moves.

20 Rxe5

21 Rd1 Qg6

Heeding Will's advice, the Q creeps back with a similar threat.

22 Nc3 Bg4

23 Bf3 Bxf3

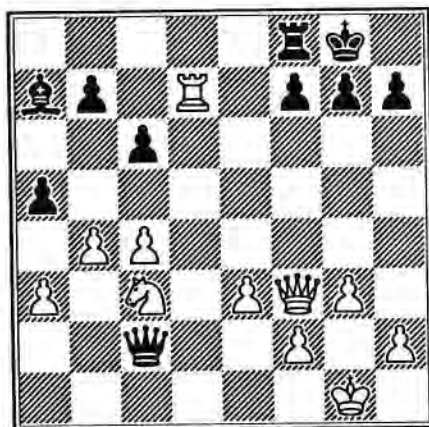
24 Qxf3 c6

Weakens d6, but is necessary to cover b5 and d5.

25 b4

I'd call the position =ish, but instead of just sitting on it, I try to make the most of my new-found "activity". Some people never learn.

25 Qc2!/?!
 26 Rxd6 Re8
 27 Rd7 Rf8



Advantage for White again, but he has to decide what to do about his attacked N. He could try 28 Rxb7 axb4 29 axb4 Qxc3 30 Rxa7 Qxc4 31 Rb7 or 28 Ne4 Qxc4!? 29 Nd6 (Ng5 h6) Qe6 30 Rxb7 Bxe3 31 Qxe3 Qxd6 32 bxa5 with the better of it in both cases. Instead ...

28 e4?

He forgets the first law of chess strategy: Don't Shoot Yourself in the Foot.

28 axb4
 29 axb4 Bxf2+

Bang.

"Some vegetables I'm fond of,
 Peas I'm relatively neutral
 about,"

John Major

I was glad to get THAT P
 back.

30 Kf1

30 Qxf2 Qxc3 31 Rxb7 Qxc4
 is fine for Black.

30 Ba7
 31 c5

Shutting out the B and
 playing for a passed P on
 the Q-side. If 31 Rxb7 Bd4.

31 Qxb2

For the first time in the
 game, Black goes into the
 lead....

32 Rxb7

... but White hits back with
 a quick equaliser!

I still couldn't decide how
 it might end. Some lines
 looked drawish; my B looked
 good - if I could get it
 working; his K was wide
 open; could I safeguard by
 back rank and get my R into
 the game ...?

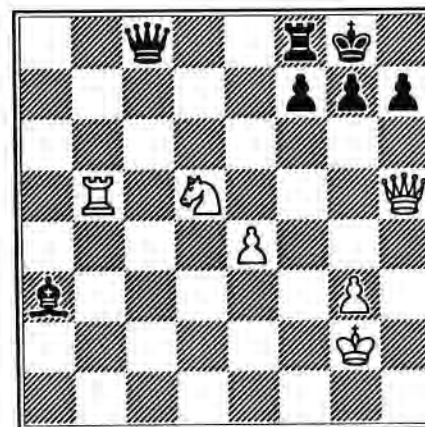
32 Bb8
 33 b5 Qh3+

White's g-pawn is untouch-
 able in view of the
 situation on the Q-side.

34 Kg1 Qc8

This would also have been
 the answer to 34 Qg2.

35 Rb6 cxb5
 36 Rxb5 Be5
 37 Nd5 Bd4+
 38 Kg2 Bxc5
 39 Qh5 Ba3



BBC's "A Question of Sport"
 has never featured chess, so
 let's remedy that by
 freezing the action and
 posing the question: WHAT
 HAPPENED NEXT?

You'll find the continuation
 on page 52



"100 CLUB"

This is a club for members
 who really would like to help
 with the development of the
 Scottish Correspondence Chess
 Association. Currently there
 are almost 80 units issued
 but we need to increase this
 to 100 - please help us!

The subscription is only £1
 per month per unit, with two
 prizes each month currently
 approx £24 and £16
 respectively - members may
 apply for more than one unit
 if they so wish!

A monthly bankers order form
 can be obtained from our
 Treasurer, Iain Campbell, 32
 Lomond Drive, Newton Mearns,
 Glasgow G77 6LR. If you
 return it to him before the
 10th of the month, then you
 will be eligible to be in
 the draw for that month.

Recent winners:

June: CH Brimson
 IA Mackintosh
 July: GWG Livie
 CR Beecham
 Aug: GD Pyrich
 D Salter

Answer: White resigned (did you get it right? I didn't!) Presumably Mike was disheartened by the turn the game had taken and wanted to concentrate on his other games, but, whatever, it's a bad move. I had expected (and given the earlier course of the game I'd have been delighted with) the draw which is in the position after 40 Nf6+! gxf6 (only move!) 41 Rg5+! and it's a perpetual after either 41 ... fxg5 42 Qxg5+ Kh8 43 Qf6+ or 41 ... Kh8 42 Qh6! fxg5 (Rg8? 43 Qxf6+ mates!) 43 Qf6+. All forced, and lovely.

"Every victory has a taste that's bittersweet"

Dire Straits

"On Every Street"

So I scored 1½/2 with the Budapest in this event by drawing a game I should (probably) have won and winning a game I should (probably) have lost. It really is a funny old game.



ICCF INDIVIDUAL TOURNAMENTS

Members of the Scottish Correspondence Chess Association are eligible to compete in ICCF promotion tournaments, which are structured to encourage participation by C.C. players of all standards. You can choose between World or European-only sections ranging upwards from third class, second class to first class. Higher Class and Master Class events require evidence of C.C. playing strength with entries.

Tournaments are organised in 7 or 15 player sections, except World III Class which is 7-player only. Normally they begin as soon as entries have been received from seven different countries, although sometimes there are two players from the same country. After you have selected a Class, you need to win a Section to be promoted.

The entry fee of £4 (for 7-player groups) or £5 (for 15-player groups) should be made payable to Scottish CCA and sent to Mr. George D. Pyrich, 53 Dunnikier Road, Kirkcaldy, Fife, KY1 2RL.

ICCF THEMATIC TOURNAMENTS

Tournaments for sections of 5-7 players, two games against each opponent. The top two players qualify for each final. The entry fee is £4 per group (payable to Scottish CCA) to: Mr. George D. Pyrich, 53 Dunnikier Road, Kirkcaldy, Fife, KY1 2RL.

**Entries by 1/12/92
Start on 1/2/93**

RC/1/93 Traxler

1 5254 5755 2 7163 2836
3 6134 7866 4 6375 6835

TW/1/93 Russian

1 5254 5755 2 7163 7866
3 4244 5544 4 5455 6654
5 4144 4745 6 5546 5446
7 2133 2836 8 4464

TI/1/93 English

1 3234 5755 2 7273 7866
3 6172 4745 4 3445 6645
5 7163 2836 6 5171 4526
7 2133 6857 8 1213 5878
9 2224 3856

TO/1/93 Larsen

1 2223

**Entries by 1/3/93
Start on 1/5/93**

TW/2/93 Spanish

1 5254 5755 2 7163 2836
3 6125 1716 4 2514 7866
5 5171 6857 6 6151 2725
7 1423 4746 8 3233 5878
9 8283 6647 10 4244 5766
11 1214

TI/2/93 French

1 5254 5756 2 4244 4745
3 2133 6824 4 5455 3735
5 1213 2433 6 2233 7857
7 4174 5878

TG/1/93 Soller Gambit

1 4244 5755 2 4455 2836
3 7163 6766

TO/2/93 Classic Spanish

1 5254 5755 2 7163 2836
3 6125 6835 4 3233 4745

FRIENDLY INTERNATIONAL MATCH

(by Colin Macgregor)

A new match started on 1/8/92 against Latvia with the following teams:

Bd	Scotland	Latvia	Bd	Scotland	Latvia
1	GD Pyrich	I Abolinsh	7	IWS Mitchell	A Hils
2	GA Morton	V Krivonosov	8	AN MacMillen	K Vitols
3	E Thompson	G Prieditis	9	SJ Baczkowski	G Rupais
4	R Cochrane	N Zuravlovs	10	DG McRoberts	J Dadzis
5	IA Mackintosh	N Gurtovojs	11	S Hilton	I Reneslaciis
6	A Armstrong	G Rudzitis	12	Rev AC Norris	H Gulbis

ICCF INDIVIDUAL TOURNAMENTS

(by George Pyrich)

A few more entries have been received since last time (Nos. 22-28 below) and a number of earlier entrants have now been allocated to sections and commenced play (Nos. 9-22).

No.	Name	Tournament Class/Players	ICCF Tourney Ref
9.	J McKenna	World 2nd 7	WT/II/GT/23
10.	I Aird	World Master 15	WT/M/GT/313
11.	Rev A C Norris	Euro 2nd 7	EU/II/1130
12.	M P Ford	Euro 3rd 7	EU/III/1086
13.	F Andres	World 3rd 7	WT/III/890
14.	S A Murray	World 2nd 7	WT/II/865
15.	Ms S Macgilchrist	Euro 1st 7	EU/I/1730
16.	A W I Campbell	World 1st 15	WT/I/GT/30
17.	D G McRoberts	World 2nd 7	WT/II/866
18.	S Hilton	Euro 2nd 15	EU/II/GT/174
19.	S Hilton	World 2nd 15	
20.	I A Marks	Euro Master 7	EU/M/1003
21.	J P E Jack	Euro 3rd 7	EU/III/1088
22.	A N MacMillen	Euro 1st 7	EU/I/1739
23.	A N MacMillen	Euro 1st 7	
24.	T Thomson	World 1st 15	
25.	M T Dyer	World 1st 7	
26.	M T Dyer	World 1st 7	
27.	I S Campbell	World Master 15	
28.	F Cochrane	World 1st 15	

Also in recent months a number of players have completed their events. Special mention should go to Phil Giulian who scored a highly creditable 7th place in a very strong World Semi-Final, and T. McMorran after sharing first place in a European 1st Class tourney. Detailed results as follows:

Name	Tournament Class	Final Place	Score
D M Livie	WT/H/GT/3	3=	8½/13
C F Boyle	WT/H/733	2	5/6
T Thomson	WT/I/GT/5	5	8½/13
I H Marshall	EU/H/GT/170	6	7½/14
D B McGarva	EU/III/1004	5	2/6
P M Giulian	WC/SF/XVI Sec.3	7	8½/14
J M Herries	EU/H/981	4	3/6
S L Clark	EU/H/GT/178	12	5½/14
T McMorran	EU/I/1500	1=	4½/6
J P E Jack	EU/III/1070	3	4/6
P McLeod	EU/III/1053	5	2/6

SELECTION COMMITTEE

The Scottish CCA Selection Committee, comprising of George Pyrich, Philip Giulian and Richard Beecham, has decided upon the composition of Scotland's teams for the forthcoming Olympiad Final and Preliminaries. It had been hoped that Ken McAlpine (IM) would also have been able to play in the Final but, regrettably, his business and other commitments have had to take priority.

It has been assumed that Scotland will be a qualifier for the next Final. However, in the unlikely event of this not being confirmed at the ICCF Congress in September, then the players will be contacted again about availability for the one team which would play in the Preliminary groups. Selection would be in accordance with the same board order, eg. if one player from the team selected for the Final did not wish to play in the Preliminaries, then the top board from the next team would be the replacement player etc.

XI Olympiad Final				XIII Olympiad Preliminary	
Bd		ICCF Title	ICCF Rating		ICCF Rating
1	D M Bryson	GM	2580	S R Gillam	2365
2	A J Muir	IM	2540	G D Pyrich	2335
3	C A McNab		2500	T J Craig	2335
4	D A Kilgour	IM	2490	J A B Stevenson	2330
5	P M Giulian	IM	2395	A J Shaw	2365
6	A P Borwell		2320	D M Jenkins	2310
Team Captain: A P Borwell				Team Captain: G D Pyrich	

Ladies VI World Championship Semi-Final

Scotland will be represented by Mrs. E.A. Hartford, who is our only lady player appearing in the new ICCF list.

The Scottish CCA has also been invited to nominate two players for two very strong Grandmaster tournaments to celebrate the jubilee of the Algerian chess organisation. The Selection Committee has decided to offer these places to Colin McNab and David Kilgour. We wish them every success and hope they will attain GM titles!

**SCOTTISH CCA MAGAZINE
INVITATION TOURNAY**

SECTION A	IM = 7 pts		1	2	3	4	5	6	7	8	9	10	11	12	13	14	15
1 D JENKINS (SCO) 2385			1/2	0	0				0	1	0	1/2	0	0	-	1/2	0
2 T de RUITER (NLD) 2505		1/2		1/2	1	0	0	0	1	0	0	1/2	1	1/2	-		1/2
3 J HARTUNG-NIELSEN (DBN) 2495		1	1/2		1		1/2		1/2	1	1/2	1/2	1/2	1/2	-	1/2	1
4 O RENNEMO (NOR) 2425		1	0	0		1	0	0	0	0	0	0	1/2	1/2	-	0	0
5 A PRYSTENSKI (CAN) 2405			1		0		0		1		0	0			-	1	
6 F FABRI (HUN) 2515	IM		1	1/2	1	1			1	1/2		1	1	1	-	1/2	
7 R CALLAGHAN Jnr (USA) 2500		1	0		1				1/2	1/2	1/2	0			-	1/2	
8 J KRISTINSSON (ICB) 2430		0	1	1/2	1	0	0			0	0	1	-	1/2	1/2		
9 C CHANDLER (ENG) 2445		1	1	0	1		1/2	1/2		1/2	0	0	-	1/2	1		
10 P GIULIAN (SCO) 2395		1/2	1/2	1/2	1	1		1/2	1	1/2	1/2	1/2	0	-	1/2	1	IM
11 D KILGOUR (SCO) 2410		1	0	1/2	1/2	1	0	1/2	1	0	1	1/2	0	-	1	1	IM 8
12 M BAUER (BRD) 2415		1	1/2	1/2	1/2	0	1	0	1	1	1	1	1	-	1/2	1	IM 8
13 G den BROEDER (NLD) 2440		-	-	-	-	-	-	-	-	-	-	-	-	-	-	-	w/o
14 A BORVELL (SCO) 2295		1/2		1/2	1	0	1/2		1/2	1/2	1/2	0	1/2	-			
15 R WIKMAN (FIN) 2385	IM	1	1/2	0	1			1/2	1/2	0	0	0	0	-	0		

SECTION B	IM = 9 1/2 pts		1	2	3	4	5	6	7	8	9	10	11	12	13	14	15
1 G PYRICH (SCO) 2225			1/2	1/2	1/2	1/2	1/2	1/2	1/2	1	1	1	1/2	1/2	1	0	8 1/2
2 G RICKERS (BRD) 2375		1/2		1/2	1	1/2			1/2	1	1/2	1	1/2	1/2	1/2	1	
3 Dr J VANDORFFY (HUN) 2415		1/2	1/2		1/2	1/2			1/2	1/2	1	1/2	0		1/2	1/2	
4 T GRIBNER (USA) 2375		1/2	0	1/2		1/2	1/2		1/2	1/2	1/2	1	0	1/2	1		
5 Dr V KARLSSON (ICB) 2375		1/2	1/2	1/2	1/2		0		1	1/2	1	1/2	0	1/2	0	1/2	
6 A ROS (DBN) 2395		1/2			1/2	1		1/2	1/2	1	1/2	1	1/2	1	1		
7 A NOSKO KOIVISTO (FIN) 2385		1/2				1/2		1/2	1/2		1/2	1/2	1	0	1/2	1	1/2
8 B MARTIN (SCO) 2320		1/2	1/2	1/2	1/2	0	1/2	1/2	1/2	1/2	1	0	1/2	1	1/2		7
9 T CRAIG (SCO) 2290		0	0	1/2	1/2	1/2	0		1/2		1	0	1/2	1/2	1/2	1	
10 L PATTERSON (CAN) 2290		0	1/2	0	1/2	0	1/2		1/2	0		1/2	0	1/2		1	
11 I CAMPBELL (SCO) 2310		0	0	1/2	0	1/2	0	1/2	0	1	1/2		1/2	1/2	0	1/2	4 1/2
12 S TEICHMEISTER (OST) 2395		1/2	1/2	1	1	1	1/2	1/2	1	1/2	1	1/2	1/2	1/2	1/2	1	10 IM
13 R BEECHAN (SCO) 2280		1/2	1/2		1/2	1/2	0		1/2	1/2	1/2	1/2	1/2	1/2	1/2	1/2	
14 K KOISTINEN (FIN) 2360		0	1/2	1/2	0	1	0	1/2	0	1/2		1	1/2	1/2			
15 P WAGG (AUS) (2200)		1			0	1/2			1/2	0	0	1/2	0	1/2			

LADIES SECTION	IM = 8 pts		1	2	3	4	5	6	7	8	9	10	11	12	13	14	15
1 M LJUBIČIĆ (CRO) (2175)																	
2 R GIULIAN (SCO) (2050)																	
3 S DJURIC (YUG) 2175		-	-	-	-	-	-	-	-	-	-	-	-	-	-	-	7 1/2
4 E CSOM-WEHRTHNER (HUN) 2115																0	
5 E HARTFORD (SCO) 1900						0											
6 E CYNOLTER BOGNARNE (HUN) 2005					1												
7 D COOPER (WAL) 2250								1/2							0		
8 M HORVATH (HUN) (1900)							1/2							0			
9 A SCHOL-GRIN (NLD) 1910																	
10 C HENRI (AUS) (1900)																	
11 M D KRASIKOVA (SU) 2100																	
12 E MOZNA-HOJDAROVA (CZE) 2340									1								
13 R I NEVEDNITSCHAJA (SU) 2320																	
14 DR T HARGITAY (HUN) 1900				1													
15 DR C ROSEFIELD (USA) 2200																	

SCOTTISH CCA MAGAZINE TOURNAMENTS

Current scores:

Section A		Section B	
Bauer	8 (1) IM	Teichmeister	10 (-) IM
Kilgour	8 (-) IM	Pyrich	8 1/2 (-)
Fabri	7 1/2 (4) IM	Ros	8 (3)
Hartung-Nielsen	7 1/2 (2) IM	Rickers	7 (3)
Giulian	7 1/2 (1) IM	Greiner	7 (1)
Chandler	6 (2) IM	Martin	7 (-)
Borwell	5 1/2 (2)	Karlsson	6 (1)
de Ruiter	5 1/2 (1)	Vandorffy	5 1/2 (3)
Kristinsson	4 1/2 (2)	Beechan	5 1/2 (2)
Callaghan	4 (5) IM	Craig	5 1/2 (1)
Wikman	3 1/2 (3) IM	Koistinen	5 (2)
Prystenski	3 (6)	Campbell	4 1/2 (-)
Rennemo	3 (-)	Patterson	4 (2)
Jenkins	2 1/2 (2)	Nosko Koivisto	3 (8)
den Broeder	w/d	Wagg	3 (5)

IM norm = 7 pts

IM norm = 9 1/2 pts

FRIENDLY INTERNATIONAL MATCHES

(by Colin Macgregor)

A new match started on 1/8/92 against Latvia with the teams as shown on page 55.

Results:

Scotland v Poland (current score 1:5)					
Correction;	Bd 29	R Dowson	1 0	Z Kilesza	0 1
Result;	Bd 15	D Crichton	0	L Marusiak	1
	Bd 4	AT Hislop	1/2 1/2	J Ciesielski	1/2 1/2
Replacement;	Bd 7	Kulekewski	replaces	H Kubiczek	
Scotland v Austria					
Results;	Bd 19	D Crichton	1 1	Kallab	0 0
Scotland v Luxembourg (current score 3 1/2:3 1/2)					
Result;	Bd 1	AP Borwell	1/2 1/2	N Stull	1/2 1/2
	Bd 2	GD Pyrich	0	T Klauner	1
	Bd 10	IWS Mitchell	1 1	R Bernard	0 0
Scotland v New Zealand					
Result;	Bd 19	DG McRoberts	1	L Purvis	0
Replacement;	JR Fisher	replaced by	S Hilton		
Scotland v Iceland					
Result;	Bd 15	A Armstrong	1/2	H Ingólfsson	1/2
Correction;	Bd 13	Player for Iceland	is	S Porkelsson	

WORLD CHAMPIONSHIP XIV 3/4 FINAL

Section 3				01	02	03	04	05	06	07	08	09	10	11	12	13	14	15	
1	V-N ANTON	BRD	2615	GM		1	1	1	1	1	1	1	1	1	1/2	1/2	1	1	
2	D N BRYSON	SCO	2565	GM	0			0		0	1	1	1/2	1/2	1	0	1	1	
3	V G RUKHLIN	URS	2475	-	0		1/2	0	1/2				1/2		1/2	1/2	0		
4	J E STEINSAPIR	URS	2515	-	0	1	1/2		0	0	1	1/2	1/2	1	1	1/2	1	1	
5	A P BODISKO	URS	2430	-	0		1	1		1/2		1	1/2	1	1/2	1	1	0	
6	S V PEDERSEN	DEN	2550	IM	0	1	1/2	1	1/2		1	1/2	1/2	1/2	1/2	1/2	1	1/2	
7	C A BLANCO	GTN	2440	-	0	0		0		0				1/2		1	0	0	
8	J GARRIGA	ESP	2565	IM	0	0		1/2	0	1/2		1/2	0	1/2	1/2	1	0	0	
9	V V SADOVDJ	URS	2330	-	0	1/2		1/2	1/2	1/2	1/2		1/2	1/2	1		1	1/2	
10	L V CHEPURNOIJ	URS	2475	-	0	1/2	1/2	0	0	1/2		1	1/2	1/2	1/2	1	1	1/2	
11	J SORRI	FIN	2510	GM	1/2	0		0	1/2	1/2	1/2	1/2	0	1/2	1/2	1	1	1	
12	H LECROQ	FRA	2590	IM	1/2	1	1/2		0	1/2		1/2		1/2	1/2		1	1	1
13	M N SHER	URS	2500	IM	-	-	1/2	1/2	-	-	-	-	-	-	-	-	-	1/2	
14	G C v PERLO	NLD	2510	GM	0	0		0		0		1		0	0	1			
15	V A ANTONOV	URS	2530	-			1	0	1	1/2	1	1	1/2	1/2	1	0	1/2		

WORLD CHAMPIONSHIP XVIII SEMI-FINAL

Section 8				01	02	03	04	05	06	07	08	09	10	11	12	13	14	15	
1	D NILSSON	(SVE)	2045			0	0	1/2		1/2	0		0	0					
2	T RESDY	(NOR)	2380		1		1/2	0	1/2	1/2	1/2		1	1/2		1			
3	D A KILGOUR	(SCO)	2415		1	1/2		1	1	1	1/2		1		1	1/2	1	1/2	
4	C TEICHMANN	(CSR)	2370		1/2	1	0			1/2	1/2		1/2	1/2	0		1		
5	A A SWEREW	(URS)	2455			1/2	0			1/2		1/2	1/2				1		
6	L T TOLONEN	(URS)	2485		1/2	1/2	0	1/2	1/2		1/2	0							1/2
7	O L HANSEN	(DEN)	2280		1	1/2	1/2	1/2		1/2		1		1			1/2	1/2	1/2
8	V P SIROTKIN	(URS)	2500						1/2	1	0							1	1/2
9	H PEREIRA	(POR)	(2200)		1	0	0	1/2	1/2										
10	B LOEFFLER	(BRD)	2385		1	1/2		1/2			0							1/2	
11	K GRAESER	(BRD)	(2200)				0	1											
12	E OSBUN	(USA)	2475				1/2										1		
13	A KOBAYASHI	(JAP)	2390			0	0	0			1/2			1/2	0				
14	A J BANGIEV	(URS)	2445				1/2		0	1/2	0								1/2
15	B P DONNELLY	(BAH)	2335							1/2	1/2	1/2							1/2

WORLD CHAMPIONSHIP XIX SEMI-FINAL

Section 2				01	02	03	04	05	06	07	08	09	10	11	12	13	14	15	
1	P HERTEL	(GER)	2550															1/2	
2	A P BORWELL	(SCO)	2320																
3	J KRISTINSSON	(ISD)	2435																
4	J GARCIA-GUT	(ESP)	2300																
5	F TEARS	(USA)	2380																
6	V NIEMINEN	(FIN)	2375																
7	I MÜLLNER	(HUN)	2555															1/2	
8	W W YARKOW	(RUS)	(2200)																
9	JW ALINGH PRINS	(NLD)	2295																
10	G SZEWCZYK	(POL)	2405																
11	M KERN	(GER)	2485																
12	C A McNAB	(SCO)	(2425)								1/2								1/2
13	H BROCKBANK	(ENG)	(2200)															1/2	1/2
14	A W WOJNA	(RUS)	(2200)																
15	G J BENDANA	(NIC)	2340																

WCC Championship XVI, Semi-Final, Sec. 3

	1	2	3	4	5	6	7	8	9	10	11	12	13	14	15	P.	
1 A. W. Kamenets (CIS)	-	1	1	1/2	0	1	1	1	1	1	1	1	1	1	1	12 1/2	
2 J. A. Palsson (ISD)	0	-	1/2	1/2	1	1	1	1/2	1/2	1	1	1	1	1	1	11	
3 V. A. Nikitin (CIS)	0	1/2	-	1/2	1/2	1/2	1	1	1	1	1	1	1	1	1	11	
4 G. Kühnel (GER)	1/2	1/2	1/2	-	1/2	1/2	1/2	1/2	1	1	1	1	1	1	1	10 1/2	
5 A. M. Isaeu (CIS)	1	0	1/2	1/2	1/2	1	0	1/2	1/2	1	1	1	1	1	1	9 1/2	
6 Sv. A. Kronberg (SVE)	0	0	1/2	1/2	1	1	1/2	0	1	1	1	1	1	1	1	9 1/2	
7 P. M. Giuffan (SCO)	0	0	0	1/2	1/2	1/2	-	1	1/2	1	1	1	1	1	1	8 1/2	
8 P. Roth (OST)	0	1/2	0	1/2	1/2	1	0	-	0	1/2	1	1/2	1	1	1	7 1/2	
9 S. Bonay (ESP)	0	1/2	0	0	1/2	0	1/2	1	-	1/2	1	1	1	1/2	1	7 1/2	
10 D. P. Gómez (COL)	0	0	0	0	0	0	0	1/2	1/2	-	0	1	0	1	1	4	
11 D. G. Liubomirrow (CIS) †	0	0	0	0	0	0	1/2	0	0	1	-	0	1	1/2	1	4	
12 H. Schoppmeyer (GER)	0	0	0	0	0	0	0	1/2	0	0	1	-	0	1	1	3 1/2	
13 K. Petzelka (CSR)	0	0	0	0	0	0	0	0	0	0	1	0	1	-	1/2	1	3 1/2
14 Dr. T. Décsli (HUN)	0	0	0	0	0	0	0	0	1/2	0	1/2	0	1/2	0	1/2	-	2 1/2
15 S. W. Jenkinson (AUS)	0	0	0	0	0	0	0	0	0	0	0	0	0	0	0	-	0

As reported in Fernschach 7/8 1992, with the correction of Philip Giuffan's designation to SCO not ENG! (an error for which he is surely due an apology from someone?) This fine achievement by Philip in scoring 60%, entitles him to participate again in the next series of World Semifinals, likely to begin towards the end of 1993.

David Kilgour is also doing exceptionally well in WC Semifinal XVIII Section 8, as can be seen on the previous page,

FEDOR BOHATIRCHUK MEMORIAL CANADIAN CC TOURNAMENT

	01	02	03	04	05	06	07	08	09	10	11	12	13	14	15
1 W GROISS (OST) 2410		1/2	1	1/2	0	1	1/2	1/2	1/2	1/2	1/2	0	1/2		
2 Y GELEMEROV (BUL) 2440	1/2		1	1	0	1		1/2	0	1/2	1/2	1/2	0		
3 D GERASSIMOV (BUL) 2415	0	0		0		1		1/2	1/2	0	0	0	0	1	
4 M HEITMANN (BRD) 2425	1/2	0	1		1	1/2	1	1/2	1	1	1	1	1	1	
5 W TÖNNEMANN (BRD) 2435	1	1		0		0	1	1/2	1/2	1	1/2	1/2	0	0	
6 S CHOVINARD (CAN) 2445	0	0	0	1/2	1		1/2	1/2	1	1/2	0	0	0	0	1
7 R SIEMMS (CAN) 2355	1/2			0	0	1/2		0	0	0			0		5
8 P SPINATH (CAN) 2360	1/2	1/2	1/2	1/2	1/2	1/2	1		1/2	1/2	1/2	1/2	1	1/2	1/2
9 W MATHES (BRD) 2375	1/2	1	1/2	0	1/2	0	1	1/2		0	1/2	0	0	1/2	1
10 O ERIKSEN (DEN) 2390	1/2	1/2	1	0	0	1/2	1	1/2		0	0	1/2	0		6
11 J PRATS (ESP) 2370		1/2	1	0		1		1/2	1			1/2			
12 PM GIULIAN (SCO) 2395	1/2	1/2		0	1/2	1		1/2	1	1			1/2	1	
13 W BOOM (NLD) 2455	1	1	1	0	1	1	1	0	1	1/2	1/2	1/2		1/2	
14 R CHAPMAN (NZD) 2485	1/2				1	1		1/2	1/2	1		0	1/2		
15 J PREGAL (ARG) 2375			0	0		0	1/2	0							

JOHN KELLNER MEMORIAL AUSTRALIAN CCL TOURNAMENT

			Section "A"														
			01	02	03	04	05	06	07	08	09	10	11	12	13	14	15
1	M J READ	(ENG) 2440		1/2	1/2	1/2	0	1/2	1/2	1	1	1		1/2	1/2	1	0
2	P STIGGAR	(NOR) 2475	1/2		1	1	0	1/2	1/2	1	1	1	1/2	1	1/2	1	1/2
3	C B JONES	(USA) 2555	1/2	0		1	1/2	1	0	1	1	1	1/2	1	1/2	0	1/2
4	D W LOVEJOY	(AUS) 2240	1/2	0	0		1	0	1/2	1	1	0	0	1	1/2	1/2	1/2
5	A PRYSTENSKI	(CAN) 2405	1	1	1/2	0		1	0		1	1	0	1	0	1/2	0
6	G WEST	(AUS) (2200)	1/2	1/2	0	1	0		1	1/2	1	1/2	1/2	1	1	1/2	1/2
7	P M GIULIAN	(SCO) 2395	1/2	1/2	1	1/2	1	0		0	1	1		1/2	1/2	1/2	1/2
8	R WIKMAN	(FIN) 2385	0	0	0	0		1/2	1		1	1/2	1/2	0		1/2	
9	J-G ESTIOT	(AUS) (2200)	0	0	0	0	0	0	0	0	0	0	0	0	0	0	0
10	G PELI	(ISL) 2460	0	0	0	1	0	1/2	0	1/2	1			1	1/2		
11	J de MAURO	(USA) 2540		1/2	1/2	1	1	1/2			1			1	1/2		1
12	K J HARRISON	(AUS) 2330	1/2	0	0	0	0	0	1/2	1/2	1	0	0		1/2	0	0
13	V PEDERSEN	(AUS) (2200)	1/2	1/2	1/2	1/2	1	0	1/2	1	1	1/2	1/2	1/2		1/2	1
14	R CHAPMAN	(NZD) 2485	0	0	1	1/2	1/2	1/2	1/2		1			1	1/2		0
15	C PARE	(CAN) 2395	1	1/2	1/2	1/2	1	1/2	1/2	1/2	1		0	1	0	1	

HOROVITZ MEMORIAL INTERNATIONAL TITLE TOURNAMENT

1M norm - 6 1/2 pts.

	01	02	03	04	05	06	07	08	09	10	11	12	13	14	15
1 K DEHMELT (USA) 2450		0	1	1		1	0	1/2	0		0	-	1/2	0	
2 J de MAURO (USA) 2540	1		1	1	1		1	1/2	1		-			1	
3 A DUNNE (USA) 2435	0	0		1/2	0	0	1/2	0	0	1	0	-	0	0	0
4 I GOLYAK (USA) 2430	0	0	1/2		1/2	1/2	1/2		0	1/2	1	-	1	1	
5 J JUNTUNEN (FIN) 2420		0	1	1/2		0	0	1/2	0	1	0	-		1	0
6 A O KARASON (ISD) 2430	0		1	1/2	1		1	1/2		1/2		-	1/2	1/2	1/2
7 D A KILGOUR (SCO) 2410	1	0	1/2	1/2	1	0		1/2	1/2	1	1/2	-	1/2	1	1/2
8 P KINDL (BRD) 2525	1/2		1		1/2	1/2	1/2		1	1/2	1	-	1/2	1	1
9 G KUBACH (USA) 2435	1	1/2	1	1	1		1/2	0		1	1	-	0	1/2	
10 O NEUVONEN (FIN) 2530		0	0	1/2	0	1/2	0	1/2	0			-	1/2	1/2	1
11 E OSBUN (USA) 2455	1		1	0	1		1/2	0	0			-		1	1/2
12 P SPINATH (CAN) 2360	-	-	-	-	-	-	-	-	-	-	-	-	-	-	-
13 H SKARKE (BRD) 2475	1/2		1	0		1/2	1/2	1/2	1	1/2		-		1	1
14 T TRONHJEM (DEN) 2500	1		1		0	1/2	0	0		1/2	0	-	0		1
15 G WALKER (SWZ) 2405		0	1	0	1	1/2	1/2	0	1/2	0	1/2	-	0	0	

JOHN KELLNER MEMORIAL AUSTRALIAN CCL TOURNAMENT

			Section "B"														
			01	02	03	04	05	06	07	08	09	10	11	12	13	14	15
1	BKD DEHMELT	(USA) 2450		1	1/2	1/2	1/2	0	1/2	0	1		1/2	1/2	1	1/2	1
2	A HARIMAN	(AUS) (2200)	0		0	0	0	0	0	0	0	0	0	0	0	0	0
3	S CHOVINARD	(CAN) 2445	1/2	1		1	0	0	0		1/2	1	0	0	1	1/2	1/2
4	S J HENRI	(AUS) 2355	1/2	1	0		0		1/2	1/2		1/2	1/2	1	1/2		
5	M PRIZANT	(ENG) 2535	1/2	1	1			0	0	1	1/2	1	1		1/2	1/2	1
6	E FLACKER	(BRD) 2435	1	1	1	1	1		1	1	1	1	1/2	1		1	1/2
7	H J LASSEN	(DEN) 2490	1/2	1	1	1	1	0		1	1/2	1	0	0	1	1/2	1/2
8	M EBELING	(FIN) 2460	1	1	1	1/2	0		0	1	1/2	1/2	1/2	1	1/2	1	1
9	P DEWAR	(AUS) (2200)	0	1	1/2	1/2	1/2	0	1/2	0		0	1/2	1/2	0	0	0
10	S R GILLAM	(SCO) 2395		1	0	0	0	0	1/2	1		0	1/2	1/2	0	0	0
11	M F NOBLE	(NZD) 2280	1/2	1	1	1/2	0	1/2	1	1/2	1/2	1		1/2	1/2	1/2	1/2
12	H F GLASER	(SIN) 2435	1/2	1	1	1/2		0	1	1/2	1/2	1/2	1/2	1/2	1/2	1	0
13	G METTYEAR	(AUS) (2200)	0	1	0	0	1/2		0	0	1	1/2	1/2	1/2		1	
14	A M LEVINE	(USA) 2390	1/2	1	1/2	1/2	1/2	0	1/2	1/2	1	0	1/2	0	0		0
15	J KOLENBRANDER	(NLD) 2420	0	1	1/2	1	0	1/2	1/2	0	1	1	1/2	1		1	

C C OLYMPIAD XI PRELIMINARIES

(Section 2)

1 CZECHOSLOVAKIA		1	2	3	4	5	6	7	8	9	10
1	A LANC WIM 2430		1	1/2		1	1	1/2	1	1	1/2
2	J AMBROZ -		1	1/2	1/2	1	1	1/2	1/2	1	0
3	M WBNER IM 2435		1/2	1	1	1/2	1	1/2	1/2	1/2	0
4	R NACHALA 2380		0	1		1/2	1/2		1/2	1	1/2
5	J KOLIN 2335		1/2	0	0	1/2	1	1/2	1	1/2	0
6	P NISKOVSKY 2480		1	1	1	1/2	1	1	1	1/2	0

2 BELGIUM		1	2	3	4	5	6	7	8	9	10
1	A VAN OSMAEL WIM 2530	0		1		1	1/2	0	1	1/2	
2	J ROOSE 2330	0		1/2	0	1/2	0	0	1/2	0	1/2
3	E VAN LEEUWEN 2140	1/2		1	1/2	1	1/2	1/2	1	1	0
4	D WEYNS -	1		1		0	1	1	1/2	1/2	
5	V LEROY 2265	1/2		1		0	1/2	1	0	1/2	0
6	H VEBB -	0		1	1/2	0	1	1/2	0	0	0

3 SINGAPORE		1	2	3	4	5	6	7	8	9	10
1	H F GLASER 2380	1/2	0			0	1/2	0	1/2	0	0
2	A CHIA -	1/2	1/2			0	1/2	1/2	1/2	0	0
3	K-S TEO -	0	0			0	0	0	1/2	0	0
4	C-V LEONG -	0	0		1/2	0	0	1	1/2	1/2	0
5	M-Y WONG -	1	0		1/2	0	1/2	1	1/2	0	1
6	B TEO -	0	0		0	0	0	1	0	0	0

4 ARGENTINA		1	2	3	4	5	6	7	8	9	10
1	J S MORGADO GM 2475					1/2	1	1/2		0	1/2
2	B MARCUSSI IM 2470	1/2	1	1			1			0	1/2
3	P BUJ IM 2445	0	1/2					0	1	1	0
4	R A REDOLFI IM 2385			1/2				0	0	0	1
5	A LAURENCENA 2405	1		1/2		1/2	0		1/2	1/2	1/2
6	C G PAPIER IM 2315	0	1/2	1		1			1/2	1/2	1/2

5 PORTUGAL		1	2	3	4	5	6	7	8	9	10
1	F SILVA WIM 2280	0	0	1	1/2		1/2	1/2	1/2	1/2	
2	R SILVA PEREIRA WIM -	0	1/2	1/2			1/2	1/2	1/2	1/2	0
3	H NETO WIM -	1/2	0	1			1/2	0	1	0	1
4	J D DE SOUSA -	1/2	1	1			0	1	1/2	1	0
5	A OLIVEIRA WIM -	1/2	1	1	1/2		1	1/2	1/2	1/2	1/2
6	C QUARESMA -	1/2	1	1	0		0	1	1	1/2	0

6 FINLAND		1	2	3	4	5	6	7	8	9	10
1	T PERMAN WIM 2355	0	1/2	1/2	0	1/2		0	1	0	0
2	H SABEL 2395	0	1	1/2	0	1/2		0	1/2	0	0
3	K TANNI -	0	1/2	1		1/2		1/2	1/2	1	0
4	S SJÖMAN 2420	1/2	0	1		1		1/2	0	1/2	1/2
5	K KAUNONEN IM 2465	0	1/2	1/2	1	0			1/2	1/2	0
6	R WIKMAN IM 2405	0	0	1		1		1	0	0	1/2

7 BRAZIL		1	2	3	4	5	6	7	8	9	10
1	G FRAGA PORTILHO 2355	1/2	1	1	1/2	1/2	1				
2	S HONCE DE CRESCHE -	1/2	1	1/2		1/2	1		1/2	1/2	1/2
3	M SILOS BIAVA WIM 2440	1/2	1/2	1	1	1	1/2		1/2	0	1/2
4	A PACINI/SOUSA WIM 2360		0	0	1	0	1/2		1/2	0	
5	O ALCANTARA SOARES 2350	1/2	0	0		1/2			1/2	1/2	1/2
6	P A GUNEZ BRIAO -	0	1/2	0		0	0		1	0	0

8 NORWAY		1	2	3	4	5	6	7	8	9	10
1	T STRAND WIM 2370	0	0	1/2		1/2	0			1/2	
2	K V STRAND IM 2445	1/2	1/2	1		1/2	1/2	1/2		0	1/2
3	F LARSEN 2325	1/2	0	1/2	0	0	1/2	1/2		1/2	1/2
4	P STIGAR -	1/2	1/2	1/2	1	1/2	1	1/2		1	1/2
5	Ø HJERTENES -	0	1	1/2	1/2	1/2	1/2	1/2		1/2	1/2
6	Ø BREKKE -	0	1	1	1/2	0	1	0		0	0

9 SCOTLAND		1	2	3	4	5	6	7	8	9	10
1	D M BRYSON GM 2565	0	1/2	1	1	1/2	1		1/2		1
2	C A MCNAB (FIDE) IM(2435)	0	1	1	1	1/2	1	1/2	1		1/2
3	A J MORRIS / A.P.BORWELL	1/2	0	1	0	1	0	1	1/2		1/2
4	T S VICKENS / G.D. PYRICH	0	1/2	1/2	1	0	1/2	1	0		0
5	P M GIULIAN 2370	1/2	1/2	1	1/2	1/2	1/2	1/2	1/2		1/2
6	A KILGOUR 2365	1/2	1	1	1/2	1/2	1	1	1		0

10 HUNGARY		1	2	3	4	5	6	7	8	9	10
1	S BRILLA-BANFALVI GM 2545	1/2		1	1/2		1			0	
2	J FÖLDI / HONFI IM 2450	1	1/2	1	1/2	1	1	1/2	1/2	1/2	
3	F FABRI 2550	1	1	1	1	0	1	1/2	1/2	1/2	
4	I MÜLLNER 2345	1/2		1	0	1	1/2		1/2	1	
5	T FLORIAN / HAAG 2415	1	1	0	1/2	1/2	1	1/2	1/2	1/2	
6	I FODOR WIM 2195	1	1	1	1/2	1	1/2	1	1	1	

IV EUROPEAN TEAM CHAMPIONSHIP PRELIMINARIES

BOARD 1 - A J NUIR

De Bu Sc Po Sw CS Sp Ir Au

	De	Bu	Sc	Po	Sw	CS	Sp	Ir	Au	
Den Sorensen, B 2575	●		○	○	○	○	1/2	1/2	1/2	
Bul Kostadinov, K 2445		●	○			○		○	○	
SCO Nuir, A J (2225)F	1	1	●	1	1/2	1/2	1	1	1	7 1/2
Por Ferreira, A M A (2300)F	○		○	●	1		1/2	○	1	
Swe Carlsson, I 2455	1		1/2	○	●	1/2	1	1/2	1/2	
CS Bulla, Dr J 2435	○	1	1/2		1/2	●		1/2	1/2	
Spa Lanz Calavia, J M 2355 M	1/2		○	1/2	○		●	○	1/2	
Ire Ludgate, A T 2465	1/2	1	○	1	1/2	1/2	1	●	1/2	5
Aus Fleischhanderl, F 2470	1/2	1	○	○	1/2	1/2	1/2	1/2	●	3 1/2

BOARD 2 - A P BORWELL

De Bu Sc Po Sw CS Sp Ir Au

	De	Bu	Sc	Po	Sw	CS	Sp	Ir	Au	
Den Christensen, B 2555	●	1/2	1/2	1/2	○	1/2	○	○	1/2	2 1/2
Bul Metchkarov, V 2200	1/2	●	1/2	1/2	○	1/2			1	
SCO Borwell, A P 2280	1/2	1/2	●	1	○	1	1	1/2	○	4 1/2
Por Costa, F V L S 2200	1/2	1/2	○	●	○	1/2	○	1/2	○	2
Swe Lundholm, Dr S G 2450 M	1	1	1	1	●	1	1	1	1/2	7 1/2
CS Krecmer, Ing M 2440	1/2	1/2	○	1/2	○	●			○	
Spa Garriga Nualart, J 2570 M	1		○	1	○		●		○	
Ire Harding, T D 2270	1		1/2	1/2	○			●	1/2	
Aus Teichmeister, Dr S 2395	1/2	○	1	1	1/2	1	1	1/2	●	5 1/2

BOARD 3 - S R GILLAN

De Bu Sc Po Sw CS Sp Ir Au

	De	Bu	Sc	Po	Sw	CS	Sp	Ir	Au	
Den Lassen, H J 2495	●	1/2	1/2	1/2	1/2	1	1	1	○	5
Bul Petrov, V (2270)F	1/2	●	1/2	1/2		1/2	1/2		1/2	
SCO Gillan, S R 2395	1/2	1/2	●	○	○	1/2		1/2	○	
Por Quaresma, L M T 2200	1/2	1/2	1	●	1/2	1/2	1		1	
Swe Gustafsson, G 2405	1/2		1	1/2	●			1	1	
CS Kolin, J 2340	○	1/2	1/2	1/2		●		1/2	○	
Spa Padros Simon, A 2340	○	1/2		○			●			
Ire Gibson, J F 2395	○		1/2		○	1/2		●	○	
Aus Aigmüller, Ing M 2360	1	1/2	1	○	○	1		1	●	

BOARD 4 - D M JENKINS

De Bu Sc Po Sw CS Sp Ir Au

	De	Bu	Sc	Po	Sw	CS	Sp	Ir	Au	
Den Sorensen, T 2450	●	1	1/2	1	1/2	1		1	1/2	
Bul Sergiew, S 2310	○	●		1/2	1/2	1/2		1		
SCO Jenkins, D M 2385	1/2		●	1/2	○	○		1	○	
Por Castro, F A P S 2200	○	1/2	1/2	●	○	1	1/2		○	
Swe Enterfeldt, L 2385	1/2	1/2	1	1	●		1	1/2	1	
CS Machala, Dr R 2395	○	1/2	1	○		●			1	
Spa Paredes Prats, J 2370				1/2	○		●	1/2		
Ire O'Siochru, O 2200	○	○	○		1/2		1/2	●	○	
Aus Hipfl, V / Schwab, R. 2350	1/2		1	1	○	○		1	●	

BOARD 5 - G D PYRICH

De Bu Sc Po Sw CS Sp Ir Au

	De	Bu	Sc	Po	Sw	CS	Sp	Ir	Au	
Den Jensen, IB V N 2440	●		1/2	1	1	1	1	1	1	
Bul Kostakiev, D 2200		●	1	○		1/2			1/2	
SCO Pyrich, G D 2205	1/2	○	●	1/2	○	1	1	1/2	○	3 1/2
Por Cordiero, V L 2200	○	1	1/2	●		1	1	○	○	
Swe Becker, J 2390	○		1		●	1	1	1	1/2	
CS Marecek, Ing M 2340	○	1/2	○	○	○	○	1		1/2	
Spa Bonay Toscas, S 2375	○		○	○	○	○	●		1/2	
Ire Montgomery, R 2345	○		1/2	1	○			●	1/2	
Aus Venger, Dr K 2200	○	1/2	1	1	1/2	1/2	1/2	1/2	●	4 1/2

BOARD 6 - T J CRAIG

De Bu Sc Po Sw CS Sp Ir Au

	De	Bu	Sc	Po	Sw	CS	Sp	Ir	Au	
Den Vefling, G 2430	●		1	1	○	○	1/2	1	1	
Bul Parvanov, L 2300		●	1/2		○	○		1/2	1/2	
SCO Craig, T J 2290	○	1/2	●	1	1/2	1	○	1	1/2	4 1/2
Por Palhares / Figueiras 2200	○		○	●			1/2			
Swe Nilsson, J 2200	1	1	1/2		●	1	1	1	1	
CS Novotny, Ing J 2415	1	1	○		○	●	1/2	1	1	
Spa Ivanez Rico, F 2420	1/2		1	1/2	○	1/2	●	1	1	
Ire Brady, L B 2265	○	1/2	○	1/2	○	○	○	○	1/2	1/2
Aus Koller, H 2200	○	1/2	1/2		○	○	○	1/2	●	

continued

BOARD 7 D H DEMPSTER			De	Bu	Sc	Po	Sw	CS	Sp	Ir	Au	
Den	Sogaard, O	2440	●	1/2	1	1	1	1/2	1/2	1	1/2	6
Bul	Gentchev, G S	2220	1/2	●			1		1			
SCO	Dempster, D H	2135	0		●	0	1	1/2	0	1/2	0	
Por	Demetrio, A E R	2200	0		1	●	1/2		1	1	1	
Swe	Friberg, H	(2265)F	0	0	0	1/2	●	0	0	1	1/2	
CS	Rosenzweig, V	2365	1/2		1/2		1	●			0	
Spa	Montecatine Rios, R	2390	1/2	0	1	0	1		●	1		
Ire	Thomson, A	2200	0		1/2	0	0		0	●	1/2	
Aus	Strauss, Prof A	2200	1/2		1	0	1/2	1		1/2	●	

BOARD 8 - B J MARTIN			De	Bu	Sc	Po	Sw	CS	Sp	Ir	Au	
Den	Berggreen, A J	2400 M	●	1/2	1/2	1	1/2		0	1	1/2	
Bul	Minkov, I	2200	1/2	●	1	1	1/2			1		
SCO	Martin, B.J.	2290	1/2	0	●	0	1	1/2	0	1	1/2	3 1/2
Por	Flores, J M S	2200	0	0	1	●	0	1/2	0			
Swe	Erlandsson, C-E	2310	1/2	1/2	0	1	●		0			
CS	Lizan, Ing L	2380			1/2	1/2		●			1/2	
Spa	Bernal Caamano, J	2200	1		1	1	1		●	1		
Ire	Killane, J	2200	0	0	0				0	●		
Aus	Steinwender, V	2200	1/2		1/2			1/2			●	

BOARD 9 - A J SHAW			De	Bu	Sc	Po	Sw	CS	Sp	Ir	Au	
Den	Nielsen, M	2395	●	1	1	1/2	0	1	1/2	1	0	5
Bul	Atanasov, B P	2425	0	●	1/2			1				
SCO	Shaw, A J	2200	0	1/2	●	0	1/2	1/2	0	1	1/2	3
Por	Morais, V M	2200	1/2		1	●			1/2	1	1	
Swe	Rydholm, L	2215	1		1/2		●	1		1	1/2	
CS	Stodola, J	2200	0	0	1/2		0	●		1	1	
Spa	Casares Ripoll, F	2200	1/2		1	1/2			●	1	0	
Ire	Gallacher, B	2200	0		0	0	0	0	0	●	0	
Aus	Roth, P	2300	1		1/2	0	1/2	0	1	1	●	

BOARD 10 G W G, LIVIE			De	Bu	Sc	Po	Sw	CS	Sp	Ir	Au	
Den	Petersen, S	2345	●		1/2	1/2	1	0	0	1	1/2	
Bul	Tschankov/ Salimev	2200		●	0	0					0	
SCO	Livie, G W G	2200	1/2	1	●	1	0		0	1	1/2	
Por	Costa, L M C M	2200	1/2	1	0	●		1/2	0	1	1/2	
Swe	Sejer, G	2295	0		1		●		1/2		1	
CS	Hadraba, Ing V	2420	1			1/2		●		1/2	1/2	
Spa	Gude Fernandez, A	2420	1		1	1	1/2		●	1/2	0	
Ire	Humphrys, F J	2200	0		0	0		1/2	1/2	●	1/2	
Aus	Vodep, O	2280	1/2	1	1/2	1/2	0	1/2	1	1/2	●	4 1/2

BOARD 11 - J SEYFRIED			De	Bu	Sc	Po	Sw	CS	Sp	Ir	Au	
Den	Kleiminger, P	2200	●		1	1/2	0	1		1	1/2	
Bul	Tenev, T	2200		●	0		1	0	1			
SCO	Seyfried, J	2200	0	1	●	0		0	1	1	0	
Por	Pinto, M M F B	2200	1/2		1	●			1	1	0	
Swe	All, V	2400	1	0			●			1	0	
CS	Necesy, Z	2320	0	1	1			●		1	0	
Spa	Gil Matilla, C	2200		0	0	0			●			
Ire	Shaw, J	2200	0		0	0	0	0	0	●	0	
Aus	Tarnowiecky, Dr H	2340	1/2		1	1	1	1		1	●	

BOARD 12 - G R SPROTT			De	Bu	Sc	Po	Sw	CS	Sp	Ir	Au	
Den	Danstrup, M	2535	●	1	1/2	1	1			1	1/2	
Bul	Mintchev, V	(2230)F	0	●	0	1	1/2	1/2		1	1/2	
SCO	Sprott, G R	2200	1/2	1	●	1	0	0	1/2	1	1	5
Por	Fonseca, A V V	2200	0	0	0	●	1/2	0	0	0	1/2	1
Swe	Olsson, S	2200	0	1/2	1	1/2	●	1/2	1/2	0	1	4
CS	Malac, M	2200		1/2	1	1	1/2	●		1	1/2	
Spa	Guillen Marco, J	2200			1/2	1	1/2		●	1	0	
Ire	Shouldice, A	2200	0	0	0	1	1	0	0	●	1/2	2 1/2
Aus	Urban, Prof F	2290	1/2	1/2	0	1/2	0	1/2	1	1/2	●	3 1/2

3rd NORTH ATLANTIC TEAM TOURNAMENT

BOARD 1		1	2	3	4	5	6	7	8	9	10	11	Pts
1	DM MacLeod	Can	*	0	1	0	0	0	1	1	0		5½
2	JM Masurel	Fra	0	*					1	0			
3	AJ Muir	SCO	1		*			1	0		0		
4	R Crusi	Spa	0			*	0			0			
5	K Dehmelt	USA	0			0	*	0		0			
6	MW Wills	Eng	0	0		1	*	0	1	0	0		
7	D Orseth	Nor	1			0	0	*	1	1	0		
8	AO Karason	Ice	0		0	0	0		*	1	0		
9	M Thomas	Wal	0	0	0	1	0	0	0	*	0	0	3
10	A Oliveira	Por	0	0			0		0	0	*	0	
11	AT Ludgate	Irl	0		0	0	0	0	0	0	*	0	

BOARD 4		1	2	3	4	5	6	7	8	9	10	11	Pts
1	S Boyd	Can	*	1	0				0	0	0	1	
2	A Wallyn	Fra	0	*	0	1	0	0	1	0	1		
3	DA Kilgour	SCO	0	0	*		1	0		0	0	1	
4	R Montecatine	Spa	0			*					1		
5	ES Martinovsky	USA	0			0	*				1		
6	PF Timson	Eng	0	0		1	*	0		1	0	1	
7	V Taksrud	Nor	0	0		1	0	*	0	1	0	1	
8	G Gislasen	Ice	0					1	*	0	0	0	
9	GH Phillips	Wal	0	0	0	0	0	0	0	*	0	0	
10	F Cleto	Por	0	0				1	0	1	*	0	
11	JF Gibson	Irl	0		0	0	0		0	0	0	*	

BOARD 2		1	2	3	4	5	6	7	8	9	10	11	Pts
1	Z Sarosy	Can	*	0		0				1			
2	S Vinot	Fra	1	*		1	0	0	1		1		
3	CA MacNab	SCO			*	1	0	0	1				
4	F Ivafiez	Spa	0			*	0	0	1				
5	EE Liebowitz	USA	0	0		0	*	0	1	1	0		
6	T Thomas	Eng	1	0	1	1	*	0	1	1	1	1	7½
7	KW Strand	Nor	0	0	1	1	0	*	1	1	1	1	
8	B Thorbergsson	Ice	0	0	1	1	0	0	*	1	1	1	
9	M Williams	Wal	0	0	0	0	0	0	0	*	0	0	0
10	C Quaresma	Por	0	0			0		1	*	1	1	
11	TD Harding	Irl	0			0	0	0	1	0	*	0	

BOARD 5		1	2	3	4	5	6	7	8	9	10	11	Pts
1	J Armstrong	Can	*		1		0	0	0	1	1	1	
2	JL Maurel	Fra		*	1		0	0	1	1	1	1	
3	TJ Craig	SCO			*	1	0	0	0	1	1	1	
4	A Gude	Spa	0	0		*	0	0	0	0	1		
5	D Kopec	USA			0	1	*	0	0	1	1	1	
6	PJ Sowray	Eng	0		1	1	*	1	1	1	1	1	
7	E Iversland	Nor	0	0	1	1	0	*	0	1	1	0	4½
8	E Thorsteinsson	Ice	0	0	1	1	0	1	*	1	1	1	
9	MJ Griffiths	Wal	0	0	1	1	0	0	0	*	1	1	4½
10	F Mendes	Por	0	0	0	0	0	0	0	0	*	0	0
11	R Montgomery	Irl	0	0	0	0	0	1	0	1	0	*	

BOARD 3		1	2	3	4	5	6	7	8	9	10	11	Pts
1	K Widmann	Can	*	1		1	1			1	1	1	
2	J de Lagotrie	Fra		*	0		0		1	1	1		
3	PM Giulian	SCO	0	0	*		0		1	1	1		
4	JL Bernal	Spa				*				1	1		
5	E Osbun	USA	0	0		*	1				1		
6	AM Stewart	Eng	0	1	0		*	0	1	1	1	1	
7	T Strand	Nor						*			1		
8	G Halldorsson	Ice		0	0		0	*		1			
9	G Sinnett	Wal	0	0	0	0	0		*	1	0		
10	C Santos	Por	0	0	0	0	0	0	0	*	0	0	0
11	E Gibney	Irl	0		0	0	0		1	1	*	0	

BOARD 6		1	2	3	4	5	6	7	8	9	10	11	Pts
1	M Edelstein	Can	*	1	1	0	0	0		1		0	
2	P Danzanvilliers	Fra	0	*	0		0	0	0	1			
3	GR Sprott	SCO	0	1	*	0	0	0	1	0	0	0	
4	F Casares	Spa	1		1	*	0	0		0			
5	I Golyak	USA	1	1	1	0	*	0	0	1	1	1	
6	M Read	Eng	1	1	1	0	0	*	1	1	1	1	
7	H Thating	Nor		1	0		0	*	0	1	0	1	
8	A Karlsson	Ice			1		0	0	*	1	1	1	
9	D Guy	Wal	0	0	0	1	0	0	0	*	0	0	1½
10	J Gonçaves	Por					0	1	0	1	*	0	
11	F Coll	Irl	1		0	0	0	0	1	0	0	*	

BOARD 7		1	2	3	4	5	6	7	8	9	10	11	Pts
1	L Neubauer	Can	*					1					
2	A Negre	Fra		*									
3	GD Pyrich	SCO			*			0	1	0			
4	M Suárez	Spa				*		0					
5	CA Haessler	USA					*					1	
6	DJR Barnes	Eng					*	0	1	1		1	
7	T Johansen	Nor	0		1	1		1	1	1		1	
8	B Magnusson	Ice			0	0	*	0	0				
9	CJ Grier	Wal			1		0	0	1	*			
10	P Sampaio	Por										*	
11	J Killane	Irl				0	0	0				*	

BOARD 10		1	2	3	4	5	6	7	8	9	10	11	Pts
1	H King	Can	*			0		0					
2	J Derouineau	Fra		*			0	0		1		1	
3	JAB Stevenson	SCO			*		1	1		1			
4	C Gil	Spa				*	1						
5	RD Weiss	USA	1				*						
6	MW Wood	Eng		1	0	0		*					
7	A Larsen	Nor	1	1	0				*	0	1		
8	JA Halldorsson	Ice						1	*	1			
9	P Bowers	Wal		0	0					0	0	*	1
10	JJ Neves	Por									1	*	
11	I Cantwell	Irl		0						0		*	

BOARD 8		1	2	3	4	5	6	7	8	9	10	11	Pts
1	AB de Vriendt	Can	*										
2	VM Goasdoue	Fra		*	0	0		1	0	0		1	4½
3	GWG Livie	SCO		1	*				1				
4	P Garcia	Spa		1		*					1	1	
5	JP Voth	USA					*						
6	AJ Slinger/Morris	Eng		0			*	1		1		1	
7	ET Gullaksen	Nor		1	0		0	*	1			1	
8	G Hannesson	Ice		1				0	*	1			
9	K Scantlebury	Wal					0		0	*			
10	J Bray	Por		0		0					*		
11	B Gallagher	Irl		0		0	0					*	

BOARD 9		1	2	3	4	5	6	7	8	9	10	11	Pts
1	J Pouliot	Can	*			1	0	1	0			1	
2	D Troffiguer	Fra		*	1				1		1	1	
3	IS Campbell	SCO			0	*	0	0	0			1	
4	F Pérez	Spa	0			*		1				1	
5	LB Owen	USA	1		1		*	1	1		1		
6	PW Hempson	Eng	0		1		*	1		1	1	1	
7	M Klingen	Nor	1	0	1	0	0	*		1	1	1	5½
8	B Sigurjonsson	Ice					0		*		1	1	
9	J Whittaker	Wal		0			0	0		*	1	0	
10	C Bajouco	Por	0	0	0	0	0	0	0	0	*	0	0
11	F Humphrys	Irl					0	0	0	1	1	*	

3rd NORTH ATLANTIC TEAM TOURNAMENT

Full cross-tables for this event appear above. The current totals for each team, as provided by Tournament Secretary, Carlos Flores (Spain), are:

	Points scored	Games completed	%
1. England	52½	75	70.0
2. USA	29½	48	61.5
3. Norway	45½	75	60.7
4. Iceland	35	58	60.3
5. Canada	32½	55	59.1
6. France	38½	66	58.3
7. Scotland	33½	63	53.2
8. Spain	18½	40	46.2
9. Ireland	21	62	33.9
10. Wales	22	84	26.2
11. Portugal	14½	60	24.2

Total number of games per team = 100

WINNING CONTINUATIONS
from page 20
SOLUTIONS

- A** 1 Bh7! Re8 2 Rd7 Re7
3 Rd8+ Re8 4 Rg8+ 1:0

Sammes v Doherty, BCC
Cand. 1990/1
- B** 1 Bxd6 1:0 because if
1 ... cxd6 2 Qb6+ Rc7
3 Bxc6 bxc6 4 Re8+ etc

Strelis v Kozlov,
Latvian CC 1989/91
- C** 1 Nf7+ Kf4 2 Qd3! and
mates or wins Queen.

Matev v Popov, 24th
Bulgarian CC
- D** 1 ... Rd2 2 Bxg6+ Kxg6
3 Kg3 e2! 0:1

Gibbs v Elliston, BCC
Cand. 1990/1
- E** 1 ... Qh6! 2 Ne3 g2!
3 Nxf2 Qc1+ 0:1
Deloras v Boudou, Europe
Ech. Ann.
- F** 1 ... Bf5! 2 Re2 g6+ 3
Kh6 Qf6 with mate by Qg7

Dehmelt v Wills, 3rd
NATT Bd 1

CHESS

This magazine, which was founded by the late B.H. Wood, is now owned by Chess & Bridge Ltd (who acquired it from Maxwell MacMillan). Its base has been moved to London, with Malcolm Pein IM as General Manager and Jimmy Adams as its new Editor.

As the leading UK chess magazine, it continues to contain a wide range of quality features in the big, bright and colourful A4 format.

Each edition now costs £2.25 (annual subscription £23.95) and is available from newsagents, established chess suppliers or direct from Chess & Bridge Ltd., 369 Euston Road, London NW1,

READ SCOTTISH CHESS

including
GAMES AND POSITIONS ANNOTATED BY PAUL MOTWANI I.M.
ENDGAME ARTICLES BY COLIN MCNAB I.M.
TEST YOUR CHESS BY RODDY MCKAY I.M.
FEATURE ARTICLES BY VARIOUS AUTHORS

- Q. HOW MUCH DOES IT COST?**
A. £6 PER ANNUM
OR £1.30 PER COPY
- Q. HOW DO I SUBSCRIBE?**
A. SEND YOUR NAME, ADDRESS AND FEE TO CHESS SUPPLIERS (SCOTLAND) LTD.

Chess Suppliers(Scotland) Limited

Registered Office: PO BOX 67, 1st Floor, 15 Hope Street,
Glasgow G2 6AQ. Telephone: 041 - 248 2887 (24 hours)

CORRESPONDENCE SETS

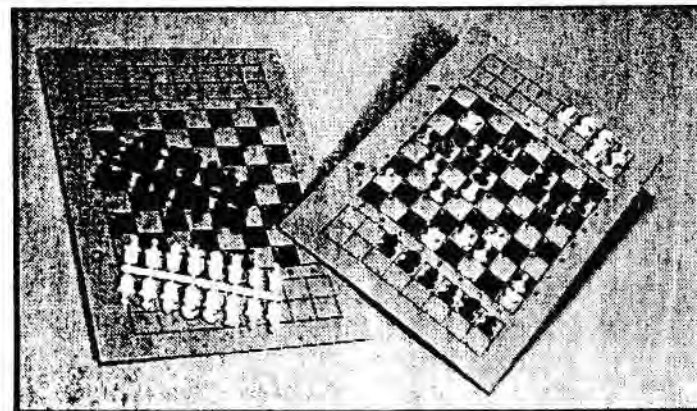
Similar to the now discontinued Portland our **STANDARD CORRESPONDENCE SET** has been highly popular with European players for many years. The overall size of the cardboard boards is 8.25" x 5.75". Plastic pieces. Supplied in Ring Binder.

With 12 sets £16.80
or 10 sets £14.80
or 8 sets £12.80
Ring binder only £3.95
Single set only £1.40

Imported from America where it has been used by correspondence players since 1974. **POST-A-LOG** has double plastic boards and reusable adhesive pieces. Positions and scoresheets are stored in a ring binder with zipper and handy pockets for notes for complete security. Compact. (only 5" x 9" x 1").

Supplied with 24 sets £24.50
18 sets £20.50
12 sets £16.50
6 sets £12.50

As illustrated below



CORRESPONDENCE CHESS STATIONERY

BCCA Correspondence Cards 16 cards £1.50
BCCA International Correspondence Cards 100 cards £3.95
Window Envelopes 100 Envelopes £2.25

Mail order and Catalogue Requests to:
Chess Suppliers (Scotland) Ltd
FREEPOST, Glasgow G2 6BR (No stamp necessary)
Or telephone 041 248 2887 (24 hours)

Chess Suppliers (Scotland) Limited

Registered Office: 100 Exchange Street, Glasgow G1 1EX. Telephone: 011-248 2001 (24 lines)

Chess Sets

Imported from America where it has been used by chess players since 1974. FORT-A-500 has a light plastic board and pieces. The board is made of a tough material and is available in a range of colors. The pieces are made of a light plastic and are available in a range of colors. The set is complete for chess play.

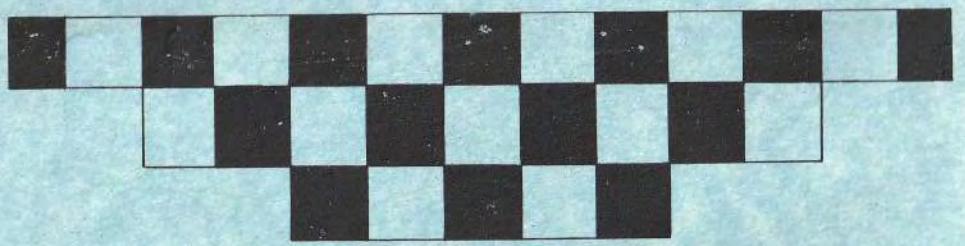
Fort-A-500	£12.00
Fort-A-500	£12.00
Fort-A-500	£12.00
Fort-A-500	£12.00
Fort-A-500	£12.00
Fort-A-500	£12.00
Fort-A-500	£12.00
Fort-A-500	£12.00
Fort-A-500	£12.00
Fort-A-500	£12.00



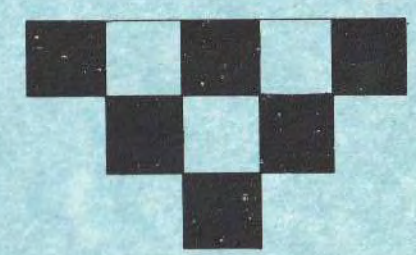
Chess Sets

100 Exchange Street, Glasgow G1 1EX. Telephone: 011-248 2001 (24 lines)

Fort-A-500 £12.00
Fort-A-500 £12.00
Fort-A-500 £12.00
Fort-A-500 £12.00
Fort-A-500 £12.00
Fort-A-500 £12.00
Fort-A-500 £12.00
Fort-A-500 £12.00
Fort-A-500 £12.00
Fort-A-500 £12.00



MAKE THE RIGHT MOVE



WE CAN HELP



General Accident

World Headquarters, Pitheavlis, Perth, Scotland PH2 0NH