

scottish  
correspondence  
chess  
association

NEWS  
BULLETIN

No. 20

60p

		Tel. No.
President ( & Editor, News Bulletin)	Alan P. Borwell 8 Wheatfield Avenue, Inchture, Perthshire PH14 9RY	0828-86556
Vice President	George W.G. Livie 34 Laggan Road, Cathcart, Glasgow G44 2SY	041-637-0722
Secretary	Alan Hind 6 Struan Road, Cathcart, Glasgow G44 3AT	041-637-4102
Treasurer	George D. Pyrich 53 Dunnikier Road, Kirkcaldy KY1 2RL	0592-204133
Assistant Secretary	Douglas M. Livie 58 Elmore Avenue, Glasgow G44 5AY	041-637-1936
International Secretary	C. Richard Beecham 28 Morris Road, Prestwick KA9 2JW	0292-76984
Grading Officer	Tony J. McClelland 75 Kenilworth Rise, Dedridge, Livingstone, W Lothian	0506-417604
Other Executive Council Members	Philip M Giuliani, 4 Gordon Cres, Newton Mearns, G77 Allan T Hislop, 4 Ascog Street, Glasgow G42 7JN Graham Wood, 27 Malcolm Cres, Monifieth, DD5 4RT	041-639-1034 041-423-0318 0382-533625
Honorary Life Member	Bernard B. Partridge	
Life Members	D.G. Anderson, G.M. Anderson, K.D. Anderson, C.R. Beecham, P.G. Bennett, Prof. G.H. Bird, A.P. Borwell, D.M. Bryson, B.W. Chalmers, G.G. Chalmers, T.J. Craig, D. Crichton, D.H. Dempster, R. Dickson, J. Eadie, R. Gibson, P.M. Giuliani, A.B. Glass, J.R. Gracie, Dr. M.C. Grayson, M.A. Hammett, Mrs. E. Hartford, A.T. Hislop, W.J. Hutchison, R.M. Innes, J.P.E. Jack, R. Jackson, D.M. Jenkins, D.A. Kilgour, D.M. Livie, G.W.G. Livie, J.P.L. Lumsden, K.B. McAlpine, J.M. MacArthur, A.J. McClelland, D. McCracken, A. McFadyen, Mrs. M.E. McGhee, M.E. McGhee, D. McKerracher, I. Mackintosh, T. McMorran, J.N. McNeill, D.G. McRoberts, J. McTaggart, I.A. Marks, I. Marshall, R. Mitchell, G.A. Morton, A.J. Muir, J.S. Murray, Dr. V.A. Nye, A.J. Norris, T. Paterson, A. Pearcey, V.A. Proudler, D.R. Reid, W.S. Roach, T. Russell, D.J. Savage, J. Seyfried, A.J. Shaw, G.R. Sprott, W.S. Smerdon, Dr. K.W.C. Stewart, M.A. Swystun, A. Taylor, T.A.H. Taylor, I. Thompson, J.M. Walker, W.P. Watson, T.S. Wickens, A. Wilson.	

INDEX OF CONTENTS

	Page(s)		Page(s)
Editorial/Secretarial Notes	1	Norwegian Anniversary Tourney	13
Town Teams/Scottish Centenary Tourneys	2	Scottish Chess Centenary Cup	14/15
SCCA AGM-Minutes	3/5	Games Section	16/26
SCCA Accounts 1985/86	6/7	Annotation for the Improving Player	27/29
Championship/Candidates 1984/86	8	ICCF Tournaments	30
Championship/Candidates 1985/87	9	Internationals	31
Premiers/Majors/Quartets 1985/86	10	Olympiad/European Team Tourney	32/33
Handicap/Opening Tourneys	11	2nd North Atlantic Team Tourney	34/35
Scottish CCA League 1985/86	12/13	Readers' Letters	36

Our Association continues to prosper but we do need more active members throughout Scotland to participate both in our national tournaments and also internationally. A new friendly match has begun against the Ukraine and one against the new World Soccer Champions Argentina is imminent. Our thoughts are looking ahead to a new series of Olympiads and European Team Tourneys - we should certainly be able to field even stronger teams to represent Scotland when these events begin, probably next year (see pages 31/35 for International News).

We congratulate Alan Norris on winning our 1984-86 Championship - he is also very close to a  $\frac{1}{2}$ IM title norm in the North Atlantic Team Tourney. I had been hoping to be able to report that Douglas Bryson had achieved his GM norm in either the Scottish or Norwegian Invitation Tournaments - he is within a "whisker" in both events, so it should be good news next time!

Once again, may I appeal for more members to join our 100 Club (see next page) and for letters, articles etc for our News Bulletin. I will try to have the next edition ready for printing and hopefully issue before leaving for the ICCF Congress in Switzerland in September. In the meantime, please keep the results flowing to our controllers so that I can publish up-to-date tables!

We reach a landmark with our 20th edition and I hope that readers will find plenty of interest in its 36 pages!

SECRETARIAL NOTES by Alan Hind

In this edition of the News Bulletin you will find the minutes of our recent AGM and our accounts for 1985/86.

Following the AGM we are pleased to welcome onto the Executive Committee for the first time Graham Wood from Monifieth and Phil Giuliani from Glasgow. We also have new office bearers - George Pyrich takes over from Alan Shaw as Treasurer and Douglas Livie from Allan Hislop as Assistant Secretary. To all those in new posts I would like to wish them well and to those stepping down I would like to thank them for their help and commitment over the past years.

Our accounts show that the SCCA is in a fairly healthy state financially and as such membership fees and tournament fees have changed only minimally. The only major change in fees announced was that Life Membership for 1985/86 will be set at £50. The thinking behind this is that although the SCCA gets interest on the Life Members fees it currently does not match up to the ordinary membership fee.

Finally, I can confirm the sponsorship by Britoil plc. They have provided the SCCA with two years' supply of international correspondence chess cards of a very high quality and the money so raised will be applied to our International Fund for promotion of international events. We are grateful to Britoil as a Scottish company for their generous support of a Scottish national association.

Subscription Rates  
1986-87

Life Member - £50, Annual Member - £6 (incl. Bulletin)  
News Bulletin only - £3 per annum (4 issues incl postages)

An invitation was received by BPCF for a team to enter a 10 Town Teams Tournament organised by Poland and the SCCA was delighted to nominate a team from Glasgow to participate. The pairings are as follows:

	Board 1	Board 2	Board 3	Board 4
Vught, Holland	B P Mulder	L C J M Mooren	H J G M Scholten	R A J A Olthof
Lund, Sweden	P I Helmertz	C-E Erlandsson	T Carnstam	R Thapper
Woronesch, USSR	N G Kopylov	A N Bragin	A M Rogalew	L M Matwiejenko
Glasgow, Scotland	D M BRYSON	K B McALPINE	A J MUIR	P M GIULIAN
Warsaw, Poland	Z Sek	R Filutowski	T Peret jatkowicz	D Haag
Poznan, Poland	R Bernard	M Stypka	R Kujawski	T Baranowski
Gdansk, Poland	W Koc	S Szczepaniec	F Adolph	M Banaszek
Prague, Czech.	I F Smrcka	Ing M Krečmer	Ing E Souček	Ing M Hladký
Budapest, Hungary	Dr J Soltay	I Torok	Dr F Forgó	Dr G Fehér
Hamburg, W Germany	A Soltau	I Schuett	K H Hallier	V Schwarz

No		SCOTTISH CENTENARY	NATION	1	2	3	4	5	6	7	8	9	10	11	12	13	14	15	POINTS
1	IM	POVAH N.E.	GBE	□	W <sup>1</sup>	1/2	W	1	W	W <sup>1</sup>	1/2	W <sup>1</sup>	1/2	0	W <sup>1</sup>	1/2	W	1	
2	GM	NAPOLITANO M.	ITA	0	□	W <sup>0</sup>	0	W <sup>0</sup>	0	W <sup>0</sup>	0	0	0	0	0	0	0	0	
3	GM	BERTA M.	YUG	W <sup>1</sup>	1	□	W	W <sup>1</sup>	1/2	1/2	W	0	W	0	W <sup>1</sup>	1/2	W <sup>1</sup>	0	
4	NM	STRAND K.	NOR	W <sup>1</sup>	□	W <sup>1</sup>	W	W	W	0	W <sup>1</sup>	1/2	0	W <sup>1</sup>	1/2	0	W	0	
5	IM	STERUD E.	NOR	W <sup>0</sup>	1	W	1/2	□	W <sup>1</sup>	0	W <sup>1</sup>	0	W	0	W	W	W	0	
6	IM	ANTON V.M.	DDR	W <sup>1</sup>	1/2	W	1/2	□	W <sup>1</sup>	1/2	W <sup>1</sup>	1/2	W	W	W	W	1/2	W	
7	GM	VUKCEVIC B.	YUG	W	1	W <sup>1</sup>	1/2	W	1	0	□	W <sup>1</sup>	W	1/2	W <sup>1</sup>	W	W	0	
8	GM	DIACONESCU P.	ROU	0	W <sup>1</sup>	W	1/2	W <sup>1</sup>	1/2	0	□	W	W	W	0	W	0	W	
9	IM	HINTIKKA E.	FIN	W <sup>1</sup>	1	W <sup>1</sup>	1	W <sup>1</sup>	1/2	W	□	W	1	W	0	W	1/2	W	
10	GM	SAGOROWSKI Prof. Dr. W.	SU	1/2	W <sup>1</sup>	W	W	W	W	W	□	W <sup>1</sup>	1/2	W <sup>1</sup>	W <sup>1</sup>	1/2	W	W	
11	IM	SORENSEN H.	DK	W <sup>1</sup>	1	W <sup>1</sup>	1/2	W <sup>1</sup>	W <sup>1</sup>	1/2	W	0	1/2	□	W	0	W	1/2	
12	IM	BOHAK J.	YUG	0	W <sup>1</sup>	0	W <sup>1</sup>	1/2	W	0	W <sup>1</sup>	W	W	□	W	W	W	W	
13	GM	WEBB S.	GBE	W <sup>1</sup>	1	W <sup>1</sup>	1/2	1	W	W	W	W	1/2	W <sup>1</sup>	□	W <sup>1</sup>	1/2	0	
14	IM	FOLDI Dr. J	HUN	W <sup>1</sup>	1/2	W	W	W <sup>1</sup>	1/2	W	1	W	W	W	W	1/2	□	W	
15	NM	BRYSON D.M.	GBS	W <sup>0</sup>	1	W <sup>1</sup>	1	W <sup>1</sup>	1	W <sup>1</sup>	1	W <sup>1</sup>	1/2	W <sup>1</sup>	1/2	W <sup>1</sup>	1	□	

"100 CLUB"

This is a club for members who really would like to help the Scottish Correspondence Chess Association develop further. Currently there are almost 80 units issued but we need to increase this to 100 as soon as possible - please help us!

The subscription is only £1 per month per unit, with two prizes each month currently approx £22 and £15 respectively - members may apply for more than one unit if they so wish!

A monthly bankers order form can be obtained from our new Treasurer, George Pyrich, 53 Dunnikier Road, Kirkcaldy, Fife, KY1 2RL. If you return it to him before the 10th of the month, then you will be eligible for inclusion in the draw for that month.

Recent winners:-

	March	April	May
1st prize	D.M. Livie	A.J. Shaw	J.S. Murray
2nd prize	A.P. Borwell	G.D. Pyrich	R. Graham

Minutes of the Annual General Meeting held in Chess Suppliers (Scotland) Ltd, 15 Hope Street, Glasgow on Sunday 8th June 1986 at 4pm.

Present: A P Borwell (President), C R Beecham, M T Dyer, A Hind, A T Hislop, D M Livie, G W G Livie, A J McClelland, G Pyrich, A J Shaw, G Wood.

Apologies: P Giulian, V A Nye.

The President opened the meeting by welcoming all those in attendance. He would make no formal speech but would comment as appropriate on individual items within the Agenda.

MINUTES OF LAST ANNUAL GENERAL MEETING

The minutes of the previous AGM held on 23rd June 1985, which were published in Bulletin No 17/18, were approved.

SECRETARY'S REPORT

The Secretary's report took the form of a brief review of a highly significant year in the SCCA's history.

Nationally

- Our ordinary membership has shown a steady if unspectacular increase. This is an area where much work must continue and all members should be encouraged to introduce others if possible.
- It is with deep regret that we record the loss of two valued members through death during the year. Both J Vernon and N C Gibson died after a period of illness. Our sympathy goes out to their families and friends.
- In national tournaments D M Bryson shared the British Championship and A J Norris won the Scottish Championship.
- A Grand Open tournament was in progress which is proving to be a success and an encouragement to continue with this type of event.
- The Executive has continued to look for financial support. It is with pleasure that we can tell you that Britoil Plc have produced two years' supply of international correspondence chess cards for us and it is hoped that other 'deals' might be forthcoming. Financially the SCCA is in good health but that is dealt with fully in the Treasurer's report.

Internationally

- A highly successful ICCF Congress was hosted by the SCCA at Peebles in August 1985. It was very well attended and judging by the favourable response of the delegates one of the best so far. Although the weather was not on our side the SCCA has gained many international friends and that will be to the benefit of our international status.
- Our players compete in the Olympiad, European and North Atlantic team tournaments and recently in the Women's Olympiad. To all our representatives we wish well.
- D M Bryson received the IM title officially at the Peebles ICCF congress. Other members with title prospects were K McAlpine, T S Wickens, and A J Norris. D M Bryson was also close to GM norm in two international events.
- Our president is currently ICCF treasurer in the second year of a 4 year term.
- Finally our thanks must be recorded to C R Beecham, international secretary, for the goodwill he generates in organising all of our friendly internationals.

At this stage the President recorded his thanks to all those who had helped in any way with the ICCF congress at Peebles. From correspondence he had received it had made a lasting impression on many delegates. The Secretary's report was adopted by the meeting.

TREASURER'S REPORT

A J Shaw indicated his intention to step down from the office of Treasurer. He felt that he did not have sufficient time to devote to carry out the duties. Rough figures had been prepared to 2nd June 1986 which would be the date of his last transaction as Treasurer and these had been provisionally audited. Accounts would be available to 31st March 1986 (our year end) and these would be published as audited in the Bulletin (see later).

On the figures at 2nd June, the SCCA had funds of £3243 less immediate liabilities for '100 club' and centenary open which left available funds of £2796. This was a drop from the previous year but was expected and takes account of all liabilities from the ICCF congress. The major liability over the next few years would be the prize fund for the Centenary invitation tournament for which we have received an SCA grant of £900.

Our fund raising had been particularly successful and thanks were accorded to G Livie for this aspect of our finance.

The President thanked A J Shaw for his valuable time and effort over the past 5 years as Treasurer. The meeting unanimously accepted the accounts with the proviso that they were still subject to audit.

ELECTION OF OFFICE BEARERS

The following were elected to the Executive Committee:

President	A P Borwell
Vice President	G W G Livie
Secretary	A Hind
Treasurer	G Pyrich
Assistant Secretary	D M Livie
International Secretary	C R Beecham
Grading Officer	A J McClelland
Other Members	P Giulian
	A T Hislop
	G Wood

A T Hislop retired from the post of Assistant Secretary but remained on the Executive. Thanks were accorded to him for his past work and the meeting was glad that his experience would not be lost to the Executive.

The meeting accorded its pleasure on the election of two new Executive members - P Giulian of Glasgow and G Wood of Monifieth and wished them both well.

The post of Publicity & Membership Officer was unfilled but the Executive Committee was empowered to fill the post at a later date.

ELECTION OF AUDITOR

The present auditor, H Bell, had intimated his willingness to continue in office provided the accounts and books of record could be examined in Glasgow. The meeting duly re-elected H Bell and agreed to these conditions. The Secretary would write to thank the auditor for his services.

SUBSCRIPTIONS

After discussion it was agreed that the following fees be set for 1986/87.

Annual Subscription	£6 (inclusive of 4 News Bulletins)
Life Membership	£50
News Bulletin only	£3 (4 editions, inclusive of postage)
League member with Bulletin	£5

Tournament Entry Fees:

Championship, Candidates	£4
Friendly Internationals	£1
All other tournaments	£2

The major change was in Life Membership Fee. It has been considered low in proportion to regular return from it and it was recommended that it continue to be reviewed over the next few years. M T Dyer suggested that it might be structured according to age of potential Life Member and this suggestion will be considered by the Executive.



CHAMPIONSHIP 84-86

Controller : Doug McRoberts

Nº		1	2	3	4	5	6	7	8	9	Pts
1	A. J. NORRIS	▨	1	1	1	0	1	1	1	1	7
2	S. R. MANNION	0	▨			0	1	1	1	1	
3	G. WOOD	0		▨		0		0	1		
4	A. TANKEL	0			▨	0		0	1		
5	T. S. WICKENS	1	1	1	1	▨	1/2	1/2	1	1/2	6 1/2
6	D. M. JENKINS	0	0			1/2	▨	1/2			
7	S. R. GILLAM	0	0	1	1	1/2	1/2	▨	1/2	1	4 1/2
8	A. J. McCLELLAND	0	0	0	0	0		1/2	▨	1	
9	T. RUSSELL	0	0			1/2		0	0	▨	

CHAMPIONSHIP 85-87

CONTROLLER : D. SAVAGE

Nº		1	2	3	4	5	6	7	8	9	10	11	Pt.
1	A. Mc GOWAN	●	1/2	1/2	0						1		
2	G. R. SPROTT	1/2	●										
3	A. T. HISLOP	1/2		●									
4	B. MARTIN	1			●						1		
5	T. S. WICKENS					●					1		
6	G. WOOD						●	1					
7	I. FREEMAN						0	●					
8	T. G. JOHNSTON								●				1/2
9	I. THOMPSON									●			
10	M. YIANNI	0			0	0					●		
11	D. M. LIVIE								1/2			●	

CANDIDATES 84-86

Controller : Richard Beecham

Nº		1	2	3	4	5	6	7	8	9	Pts
1	I. MARKS	▨	1/2	1		0	1	0	0	1	
2	M. A. SWYSTUN	1/2	▨		1/2	0	1	1	1/2	1/2	
3	J. STEVENSON	0		▨		1/2		1	1	1	
4	M. HAMMETT		1/2		▨	1	1/2	1	0	1/2	
5	G. A. MORTON	1	1	1/2	0	▨	1	1	1/2	1/2	5 1/2
6	Mrs. E. HARTFORD	0	0		1/2	0	▨	0	0	1/2	
7	J. BISLAND	1	0	0	0	0	1	▨	0	0	2
8	G. H. BIRD	1	1/2	0	1	1/2	1	1	▨	1/2	5 1/2
9	D. L. GILLESPIE	0	1/2	0	1/2	1/2	1/2	1	1/2	▨	3 1/2

CANDIDATES 85-87

CONTROLLER : C. R. BEECHAM

Nº		1	2	3	4	5	6	7	8	9	10	11	12	13	Pt.
1	A. LUMSDEN	●	-	-	-	-	-	-	-	-	-	-	-	-	1/2
2	J. BISLAND	-	●						-						
3	Prof. G. H. BIRD	-		●				1	-						
4	R. KILPATRICK	-			●			1	-						
5	I. MARKS	-				●									
6	I. MARSHALL	-					●							0	
7	T. Mc MORRAN	-	0	0				●	-				1		
8	J. SEYFRIED	-	-	-	-	-	-	-	●	-	-	-	-	-	1/2
9	W. McMILLAN	-								●					
10	J. STEVENSON	-									●				
11	M. Mac LEOD	-										●			
12	D. HARVEY	-						0					●		
13	D. McKERRACHER	-					1							●	

**PREMIER TOURNAMENTS** Controller: T. WICKENS

N°	A	1	2	3	4	5	6
1	P. COFFIELD	●			○		
2	M. ROSS		●				
3	S. HILTON			●			
4	M. DYER	1			●		
5	J. MERRIFIELD					●	11
6	I. SNEDDON					○○	●

N°	B	1	2	3	4	5	6
1	D. REID	●				11	
2	J. CARLIN		●				
3	J. HERRIES			●			
4	D. GILLESPIE				●		
5	B. CHALMERS	○○				●	
6	S. CLARK						●

N°	C	1	2	3	4	5	6
1	J. McINTYRE	●	½		-	○	
2	A. SWANN	½	●		-	1	
3	R. ROUGH			●	-		
4	V. FRISCH	-	-	-	●	-	
5	Z. SADOWSKI	1			-	●	
6	E. H. MURRAY		○		-		●

**QUARTET TOURNAMENTS** Controller: D. M. LIVIE

N°	POSTAL KNIGHT	1	2	3	4	PT.
1	I. THOMPSON	●				
2	G. BLENCOWE		●			
3	T. A. H. TAYLOR			●		
4	S. KING SPOONER				●	

N°	POSTAL SHIELD	1	2	3	4	PT.
1	T. J. CRAIG	●				
2	J. BISLAND		●		11	
3	V. PROUDLER			●		
4	A. WILSON		○○		●	

N°	Q 117	1	2	3	4	PT.
1	G. W. G. LIVIE	●	11	11		
2	J. M. ROSS	○○	●	11		
3	I. SNEDDON	○○	○○	●	○○	w/b
4	G. WALLIS			11	●	

N°	Q 118	1	2	3	4	PT.
1	A. LUMSDEN	●	○○	○○		
2	S. R. CAPSEY	11	●	11		
3	J. McMENEMY	11	○○	●		
4	M. BIRD				●	

**MAJOR TOURNAMENTS** Controller: G. W. G. LIVIE

N°	A	1	2	3	4	5
1	I. MITCHELL	●	1½	11	○	1
2	J. GARVOCK	○½	●	11		
3	R. LOUGHRAN	○○	○○	●	○○	w/b
4	D. HENDERSON	1		11	●	
5	F. HALL	○		11		●

N°	B	1	2	3	4	5
1	M. MOOHAN	●	11		11	11
2	J. McMENEMY	○○	●	○○		
3	R. FISHER		11	●	1○	
4	J. CAMPBELL	○○		○1	●	11
5	M. GANNON	○○			○○	●

N°	C	1	2	3	4	5
1	J. PATRICK	●	11			
2	J. WALKER	○○	●	○○	○○	w/b
3	J. TAYLOR		11	●		○○
4	Ms A. McMONIGLE		11		●	
5	A. WILSON		11	11		●

N°	D	1	2	3	4	5
1	P. McGOWAN	●			11	
2	K. SEYFRIED		●	11		
3	J. STALLARD	○○	○○	●	○○	w/b
4	I. MORRIS			11	●	
5	W. McGLINCHEY			11		●

N°	Q 119	1	2	3	4	PT.
1	K. GORDON	●		-		
2	E. A. BAILEY		●	-		
3	N. C. GIBSON <i>deit</i>	-	-	●	-	
4	W. McGLINCHEY			-	●	

N°	Q 120	1	2	3	4	PT.
1	S. HILTON	●	11		½	
2	J. WALKER	○○	●	○○	○○	w/b
3	B. R. HILL		11	●		
4	J. WATSON	½	11		●	

N°	Q 121	1	2	3	4	PT.
1	J. CARLIN	●		1		
2	T. McMORRAN		●			
3	J. GARVOCK	○		●	11	
4	D. S. PAXTON			○○	●	

N°	Q 122	1	2	3	4	PT.
1	P. FERRY	●				
2	S. ADAMS		●			
3	J. WARD			●		
4	ISWS TOUMACHE				●	

**HANDICAP TOURNAMENT** (by Allan Hislop)

I reported in the last issue of the magazine that we had some eighteen players taking part. We now have nine new players, so things are looking healthy. Perhaps the message of the Handicap is getting through, namely it is played on equal terms; personal choice of when to start; any number of opponents; ample time with 30 days for 10 moves, and no real pressure of adjudication. Games count towards grading.

So what's in a name? Handicap under any other name would be just as good a tourney. However, as others have agreed, it is a misnomer, and with their support I should like to see the name changed. It should be noted that I have had no comment to say the name should remain as it is. Qui tacet consentit?

So, to set the ball rolling, how about calling it the "Challenge Tournament"? Please let me know how you feel about that.

My suggestion of an Individual League Tournament was discussed at a very busy committee meeting. There was a feeling that such a tournament would clash with the present Championship, albeit the new tournament would be on a yearly basis. It was suggested that I get together with Douglas Livie and, in conjunction with the Centenary Cup, some kind of initiative on the matter could emerge. This will take place as we are both members of Cathcart Chess Club which now meets every Monday at the Clarkston Rugby Club all the year round. So over a pint we might stagger up with something!

Lastly, with reference to a possible new name for the magazine, I quite like En Passant, as suggested by Graham Wood in Issue 19.

**OPENINGS TOURNAMENT 85 - 86**

This season's tournament begins with the opening moves of the Benoni Indian Defence - Benko Variation 1 d4 Nf6 2 c4 c5 3 d5 b5.

No	SECTION OT1	1	2	3	4
1	R W M Baxter	▨			
2	S Hilton		▨		
3	S King-Spooner			▨	
4	K MacKenzie				▨

No	SECTION OT2	1	2	3	4
1	Mrs E A Hartford	▨			
2	K D Anderson		▨	○○	
3	W M Grant			▨	
4	P McGowan		11		▨

No	SECTION OT3	1	2	3	4
1	M J MacLeod	▨	1		
2	J G Blencowe	0	▨		
3	J McMenemy			▨	
4	D S Paxton				▨

**Overseas Subscribers**

Subscription for two year's editions of the Scottish CCA News Bulletin can be obtained for £8 ( eight issues, inclusive of postage )

# SCOTTISH C.C.A. LEAGUE 1985/6

( Controller : Ken Gordon )

The League this season again has four divisions of six teams, with holders, The Establishment, as favourites to retain their title. There are some interesting pairings such as Tim Wickens v Alan Borwell, Tommy Craig v George Livie, Alan Grant v Alan Shaw, Alan McGowan v Alan Petrie, etc.

In the Second Division, Kirkcaldy and Duntocher will be trying to regain top division status but Crowwood and Brutal Realism should run them close. Division Three welcomes the formidable line-up from Streatham & Brixton, but Glasgow and Cumbernauld Rookies could cause some surprises. Division Four teams find the Mechanical Men as opposition - a team of computers whose entry caused the organisers a problem! It was accepted on an experimental basis and it is hoped other teams will not object for this season.

## Division 1

<u>A - Cathcart "A"</u>		<u>B - Dreghorn "A"</u>		<u>C - Perth Correspondents</u>	
1 A. Grant	v E1	1 J. Anderson	v D1	1 A.P. Borwell	v F1
2 A. McGowan	v D2	2 R. Bonar	OO v C2	2 I. Mackintosh	II v B2
3 A. Hislop	v C3	3 J. Shankland	O v F3	3 D.J. Howat	v A3
4 D.M. McRoberts	v B4	4 R. Loughran	v A4	4 K.A. Wilson	v E4
5 D. Hewitt	v F5	5 I. Sneddon	v E5	5 I.W.S. Mitchell	v D5

<u>D - Falkirk RSVF</u>		<u>E - Chess Suppliers "A"</u>		<u>F - The Establishment</u>	
1 M. Burgess	v B1	1 A.J. Shaw	v A1	1 T.S. Wickens	v C1
2 A. Petrie	v A2	2 G.W.G. Livie	v F2	2 T.J. Craig	v E2
3 G. Hamilton	v E3	3 D. Griffin	v D3	3 C.R. Beecham	I v B3
4 A. Thomson	v F4	4 D. Livie	v C4	4 I.S. Campbell	v D4
5 J. Desmond	v C5	5 L.R. McKenzie	v B5	5 A. Hind	v A5

## Division 2

<u>A - Forth Knights</u>		<u>B - Duntocher</u>		<u>C - Brutal Realism</u>	
1 S. Rettie	v E1	1 A.J. McClelland	v D1	1 P. Coffield	v F1
2 J.P. Watson	v D2	2 I. Thompson	v C2	2 B. Keenan	v B2
3 R.E. Rough	v C3	3 R. Beacon	v F3	3 J.S. Murray	v A3
4 S. Gilmour	v B4	4 R. Dickson	v A4	4 A. Thomson	v E4
5 B. Currie	v F5	5 D.R. Reid	v E5	5 I. McMillan	v D5

<u>D - Crowwood I</u>		<u>E - Kirkcaldy</u>		<u>F - Chess Suppliers "B"</u>	
1 J. Doyle	v B1	1 G.D. Pyrich	v A1	1 C. McAleenan	v C1
2 J.B. Henderson	v A2	2 D.H. Dempster	v F2	2 J.W. McIntyre	v E2
3 J. Stevenson	v E3	3 I. Marshall	v D3	3 J. Carlin	v B3
4 D.L. Gillespie	v F4	4 J. Webster	v C4	4 M. Dyer	v D4
5 J. McGuinness	v C5	5 M.C. Grayson	v B5	5 D. Neil	v A5

## Division 3

<u>A - Glasgow</u>		<u>B - Streatham &amp; Brixton</u>		<u>C - Black Knight</u>	
1 S.R. Mannion	v E1	1 C. McNab	v D1	1 G. Wood	v F1
2 P.M. Giulian	v D2	2 A. Norris	v C2	2 S. Bell	v B2
3 K.W.C. Stewart	II v C3	3 S. Gillam	v F3	3 D. Cullen	OO v A3
4 T. Russell	v B4	4 R. Inglis	v A4	4 R. Mitchell	OO v E4
5 T. Hutton	v F5	5 Ms. M. Hay	II v E5	5 N. Orr	OO v D5

<u>D - Strathclyde University</u>		<u>E - Border Reivers</u>		<u>F - Cumbernauld Rookies</u>	
1 M. Moohan	v B1	1 A. Lumsden	v A1	1 I. Marks	v C1
2 M. MacLeod	v A2	2 M. Plummer	v F2	2 B.S. Noon	v E2
3 W. McGlinchey	v E3	3 J.D. Moore	v D3	3 I. MacKay	v B3
4 J. McRoberts	v F4	4 R. Plummer	II v C4	4 H. Peffers	v D4
5 A. Duff	II v C5	5 D. Plummer	OO v B5	5 F. Davis	v A5

## Division 4

<u>A - Paisley "A"</u>		<u>B - Mechanical Men</u>		<u>C - Castlehill Chess Club</u>	
1 R. Mitchell	v E1	1 Super Constellation	v D1	1 P.A. Chalmers	v F1
2 K. Beaton	v D2	2 White Knight	v C2	2 C.A. MacGregor	v B2
3 P. Smith	II v C3	3 Morphy Plus	v F3	3 C. Low	OO v A3
4 M. McBeth	v B4	4 White Knight MK12+	v A4	4 Miss N. Fugaccia	v E4
5 J. Thornton	v F5	5 Sensory Challenger	v E5	5 Miss A. McMonigle	II v D5

<u>D - Forth Rooks</u>		<u>E - Chess Suppliers "C"</u>		<u>F - The Pawn Pushers</u>	
1 A.M. Scott	1/2 v B1	1 Mrs. M. McGhee	v A1	1 K. McDonald	v C1
2 W. Mather	v A2	2 M.E. McGhee	I v F2	2 S. Hilton	O v E2
3 K. Fullard	v E3	3 B.W. Chalmers	v D3	3 S. Doherty	v B3
4 T. Crone	v F4	4 A. Gallacher	v C4	4 J. Garvock	v D4
5 D. Watson	OO v C5	5 R. Muir	v B5	5 T. Mason	v A5

NORWEGIAN 40th ANNIVERSARY		1	2	3	4	5	6	7	8	9	10	11	12	13	14	15	P
1	DR. H W DUNHAUPT	BRD	1	1	1	1	0	1	0	1	1	1	1	1	1	1	
2	TERJE WIBE	N	0	1	1	1	1	1	0	0	1	1	0	1	1	0	
3	DICK SMIT	NL	0	1	1	1	1	1	1	1	1	1	1	1	1	1	
4	FRANCEK BRGLEZ	YU	0	1	1	1	1	0	1	1	1	1	1	1	1	1	
5	HORST HANDEL	DDR	1	1	1	1	1	1	1	1	1	1	1	1	1	1	
6	OVE EKEBJÆRG	DK	1	1	1	1	1	1	1	1	1	1	1	1	1	1	
7	PETER OAKLEY	GBE	0	0	0	0	0	0	0	0	0	0	0	0	0	0	
8	DAG ORSETH	N	0	0	1	1	1	1	1	1	1	1	1	1	1	1	
9	DOUGLAS M BRYSON	SCO	1	1	1	1	1	1	1	1	1	1	1	1	1	1	
10	ADRIAN HOLLIS	GBE	1	1	1	1	1	1	1	1	1	1	1	1	1	1	
11	ISTVÁN SCHRANCZ	H	1	1	1	1	1	1	1	1	1	1	1	1	1	1	
12	SÁNDOR BRILL-BANFALVI	H	0	0	0	0	0	0	0	0	0	0	0	0	0	0	
13	A A IDEMA	NL	1	1	1	1	1	1	1	1	1	1	1	1	1	1	
14	INGO SCHÜTT	BRD	1	1	1	1	1	1	1	1	1	1	1	1	1	1	
15	OLLI KOSKINEN	SF	1	0	1	1	0	0	1	1	0	1	1	1	1	1	



SCOTTISH CHESS CENTENARY CUP

Nº	SECTION 1	1	2	3	4	5	6	7	Pt.	Pl.
1	G. THOMSON	0	0	0	0	0	0	0	W	D
2	S. L. CLARK	1	0	1/2	1/2	1	0	3/4		
3	C. R. BEECHAM	1	1/2	0	1	1	0			
4	A. SWANN	1	1/2	0	1	1	1/2			
5	B. WHITBY	1	1/2	0	0	1/2	1/2			
6	R. O'BRIEN	0	0	0	1/2	0	0	W	D	
7	S. C. CROWDY	1	0	1	1/2	1/2	1	0	5	1sr

Nº	SECTION 2	1	2	3	4	5	6	7	Pt.	Pl.
1	J. D. THORN	0	1/2	1	1	1/2	0	1	4	
2	J. B. LANGSTAFFE	1/2	0	1	0	0	1			
3	P. W. GOODACRE	0	0	0	0	0	1	1		
4	N. MERCER	0	1	0	0	1/2	1			
5	A. Mc GOWAN	1/2	1	1	1	0	1	5/4	1sr	
6	R. BEACON	1	1	1	1/2	0	0	1	4/2	
7	W. McMILLAN	0	0	0	0	0	0	W	D	

Nº	SECTION 11	1	2	3	4	5	6	7	Pt.	Pl.
1	T. DOOTSON	0	0	1	1	1	1/2			
2	J. LAMBLEY	0	0	1	1/2	0				
3	V. W. GRIFFITHS	1	1	0	1	1	1	1/2	5/2	1sr
4	J. DAWSON	0	0	0	0	0	0	0		
5	A. J. C. RAWLINGS	0	1/2	0	1	0	1			
6	M. J. HARLEY	1	0	1	0	0				
7	D. L. GILLESPIE	1/2	1/2	1						

Nº	SECTION 12	1	2	3	4	5	6	7	Pt.	Pl.
1	V. W. GRIFFITHS	0	1	1/2	0	1	1			
2	F. AINSWORTH	0	0	0	0	1	0	1		
3	G. A. MORTON	1/2	1	0	1	0	1	1/2	4	
4	J. W. McINTYRE	1	1	0	0	1	1			
5	A. J. MUIR	1	1	1	1	0	1	1	6	1st
6	D. GILLESPIE	0	0	0	0	0	0	W	D	
7	Z. E. SADOWSKI	0	1	1/2	0	0	1	0	2/4	

Nº	SECTION 3	1	2	3	4	5	6	7	Pt.	Pl.
1	C. R. CHANDLER	0	1	0	1	1	1			
2	C. G. WILLEY	0	0	1/2	1	0	0			
3	A. E. DEARLOVE	1	1/2	0	1	1	1/2			
4	J. CARLIN	0	0	0	1	1/2	0			
5	W. PRESTON	0	0	0	0	0	0			
6	D. HARVEY	1	1/2	1/2	1	0	1			
7	J. E. HAWKES	0	1	1	1	0	0			

Nº	SECTION 4	1	2	3	4	5	6	7	Pt.	Pl.
1	A. W. I. CAMPBELL	0	1	1	1	1/2	1	1	5/4	1st
2	A. N. MORRIS	0	0	1	1	1/2	1	1	4/2	
3	D. G. McROBERTS	0	0	0	1	0	0	1	2	
4	Mrs A. E. R. LILIVER	0	0	0	0	0	0	W	D	
5	M. THOMAS	1/2	1/2	1	1	0	1	1	5	2nd
6	D. RAMSEY	0	0	1	1	0	0	1	3	
7	R. E. COX	0	0	0	1	0	0	0	1	

Nº	SECTION 13	1	2	3	4	5	6	7	Pt.	Pl.
1	D. HUGHES	0	1	1	1/2	1				
2	S. HAMILTON	0	0	0	1	0	0	W	D	
3	E. DAVIS	1	0	1	0	1	1			
4	G. McKENZIE	0	0	0	0	0	0	W	D	
5	S. HILTON	1/2	0	1	1	0	1	3/4		
6	D. I. ROSS	1	0	1	1	0	1			
7	A. MONTAGUE	0	0	0	0	0	0	W	D	

SCOTTISH CHESS CENTENARY CUP  
CONTROLLER

D.M. LIVIE,  
58 ELMORE AVENUE,  
SIMSHILL, GLASGOW G44 5AY.

Nº	SECTION 5	1	2	3	4	5	6	7	Pt.	Pl.
1	J. WATSON	0	0	0	1	0	0	1		
2	H. J. GAWLIK	1	0	0	1	1/2	1			
3	L. LANGSTAFFE	1	1	0	1	1	1/2	5	1sr	
4	J. COPLEY	1	0	0	1	1/2	1			
5	A. BARNSELY	0	0	0	0	0	0	W	D	
6	G. M. ANDERSON	1	1/2	1/2	1	0				
7	N. MERCER	1	0	1/2	0	1	0			

Nº	SECTION 6	1	2	3	4	5	6	7	Pt.	Pl.
1	D. RAMSEY	0	0	0	0	0	0	W	D	
2	K. BRIDGES	1	0	0	0	0	0	1		
3	P. H. TIBBERT	1	1	0	1	1	0	1	5	
4	J. ASHRIF	1	1	0	0	0	0	W	D	
5	J. MERRIFIELD	1	1	0	1	0				
6	A. G. E. BIRD	1	1	1	1	0	1			
7	D. POOLE-ROSKOWSKA	1	1	0	1	1	0			

Nº	SECTION 14	1	2	3	4	5	6	7	Pt.	Pl.
1	I. S. CAMPBELL	0	0	1	1	0	1/2	0	2/4	
2	L. GOIDE	1	0	0	1/2	0	1	0	2/4	
3	J. BRIGHTON	0	1	0	0	0				
4	I. SNEDDON	0	1/2	0	0	1/2	1/2			
5	M. T. DYER	1	1	1	1	0	1/2	1/2	5	
6	G. A. LITTLE	1/2	0	1	1/2	1/2	0	2/4		
7	S. WHITEHEAD	1	1	1/2	1/2	1	0			

ENDGAMES - STUDIES

POSTSJAKK announce an international competition for unpublished Endgames (Studies). Complete solution must be supplied, with all supporting variations and comments, as appropriate. Diagrams, Name and Address may be sent to the Editor: **ROALD BERTHELSEN** MARKNADSVÄGEN 75 S-183 34 TABY/SWEDEN before 31/12 1986. There will be 3 moneyprizes in Norwegian Kroner, and further book prizes. Judge: **A HILDEBRAND**

Nº	SECTION 7	1	2	3	4	5	6	7	Pt.	Pl.
1	J. COPLEY	0	0	1	1/2	1	0	0	2/4	
2	A. K. MUKHERJEE	1	0	1	1	1	1	1	6	1sr
3	G. DEARING	0	0	0	0	0	0	W	D	
4	B. L. MITCHELL	1/2	0	1	0	1	1	1	4/4	
5	J. E. WILLIAMS	0	0	1	0	0	0			
6	R. JACKSON	1	1	0	0					
7	J. HENDERSON	1	1	0	1	0				

Nº	SECTION 8	1	2	3	4	5	6	7	Pt.	Pl.
1	A. JONES	0	0	0	1	0	0	0	1	
2	E. WOOD	1	0	1	1	1/2	1/2	1	5	
3	I. MARSHALL	1	0	0	1	1	1			
4	J. HOPKINS	0	0	0	0	0	0	W	D	
5	D. QUINN	1	1/2	1	0	1	1			
6	R. T. FISHER	1	1/2	0	1	0	0	1/2	3	
7	I. MACKINTOSH	1	0	0	1	0	1/2	0	2/4	

Nº	SECTION 15	1	2	3	4	5	6	7	Pt.	Pl.
1	N. CHARALAMBOUS	0	1	0		1	0			
2	Rev. E. A. BAILEY	0	0		1/2	1/2				
3	A. TANKEL	1	0	1	1	1	0			
4	G. PYRICH		0	0	1/2	1	1/2			
5	W. Mc GLINCHEY	1/2	0	1/2	0		0			
6	R. W. MITCHELL	0	1/2	0	0	0	0			
7	D. QUINN	1	1	1/2	1	1	0			

Our good friend Raimo Lindroos has asked us to remind members of his special interest in chess philately. If anyone is interested and would like to contact him, he would be pleased to hear from you. His address is:

Mr. Raimo Lindroos,  
Ahokuja 2,  
SF-04400 Järvenpää,  
Finland.

Nº	SECTION 9	1	2	3	4	5	6	7	Pt.	Pl.
1	B. J. MARTIN	0	0	1	1	1	1	1/2	4/4	
2	R. BROWNSORD	1	0	1	1	1				
3	B. LEGGE	0	0	0	1	0	0	0	1	
4	F. MOON	0	0	0	0	0	0	W	D	
5	R. W. MITCHELL	0	0	1	1	0	0			
6	A. LUMSDEN	0	1	1	0					
7	M. MacLEOD	1/2	1	1	1	0				

Nº	SECTION 10	1	2	3	4	5	6	7	Pt.	Pl.
1	J. HOPKINS	0	0	0	0	0	0	W	D	
2	T. P. MILLIGAN	1	0	1/2	1	0	1	1/2	4	
3	D. NEIL	1	1/2	0	1	1	1	1/2	5	1sr
4	J. W. MANN	0	0	0	0	0	0	W	D	
5	M. MacLEOD	1	1	0	1	0	0	1/2		
6	E. CLARK	1	0	0	1	0	1/2			
7	E. J. SMITH	1	1/2	1/2	1	1/2	1/2	0	4	

Nº	SECTION 16	1	2	3	4	5	6	7	Pt.	Pl.
1	E. P. HOPKINS	0	0	0	0	0	0	W	D	
2	J. WARD	1	0	1/2	1	1/2	0	0	3	
3	I. MACKAY	1	1/2	0	1	1/2	1	1/2	4	1st
4	A. CLARK	1	0	0	0	0	0			
5	N. NORMAN	1	1/2	1/2	0	1/2	1/2			
6	D. N. BUTLER	1	1	0	1	1/2	0	1/2	4	
7	K. J. HABGOOD	1	1	1/2	1	1/2	1/2	0	4	1st



# GAMES SECTION

Selected by Douglas Bryson

Thanks to all the players who have contributed to this issue. Annotating and sending in your games can encourage other players to take up postal chess.

Our first example comes from emigré (London) Simon Gillam. The Marshall attack is a particularly interesting opening. If Black can get an equal game by sacrificing a pawn for an attack, then it means no-one need fear 1. e4!

RUY LOPEZ - MARSHALL (C 89)

White: A.J. McCLELLAND  
Black: S.R. GILLAM

SCCA Championship 1984-86

1	e4	e5
2	Nf3	Nc6
3	Bb5	a6
4	Ba4	Nf6
5	0-0	Be7
6	Re1	b5
7	Bb3	0-0
8	c3	

Fischer always played 8 c3. The justification for the Marshall Gambit is the fact that c3 contributes nothing to development - look at all the White queenside pieces. (Editor)

8		d5
9	exd5	Nxd5
10	Nxe5	Nxe5

11 Rxe5 c6

In my search for a defence to 1 e4, to replace the Latvian Gambit, I have looked at the opening repertoires of my team-mates at Streatham & Brixton. This game is my attempt to imitate Mark Hebden.

An interesting alternative, also part of the Hebden repertoire, is 11 .. Bb7. After 12 Qf3 Bd6, 13 Bd5 c6, 14 Re2 cxd5, 15 d4 Qc7. Black plays the minority attack with ... b4, with good play for the pawn. I am playing this in the Poland-Scotland friendly.

12	d4	Bd6
13	Re1	Qh4
14	g3	Qh3
15	Be3	Bg4
16	Qd3	Rae8
17	Nd2	f5

The old main line, as played by Hebden. In the 1960s and 1970s, Spassky's 17 ... Re6 was more popular, so some opening books (eg. ECO) neglect this old line.

18	Qf1	Qh5
19	f4	Kh8
20	Bxd5	cxd5
21	a4	bxa4

This is the move which renewed interest in the old line, and which has worked well for Hebden. The old treatment was 21 ... g5, 22 ab5 ab5.

22 Rxa4

22 Qxa6 is also playable. The OTB game P.V. Byway v S.R. Gillam (National Club 1985) continued 22 ... Re6, 23 Qxa4 (23 Qf1!) 23 ... Be2 (23 ... g5!), 24 Qd7 Rh6, 25 h4 Qg4, 26 Kf2 Bd3, 27 c4 Rg6, 28 Nf1 Bxf1, 29 Rxf1 Qxg3+, and the White king did not survive for long.

22 ... g5  
23 Raal!

There is an amusing story about an alternative line: 23 Qg2 Re4! 24 Nxe4 fxe4, 25 Rxa6 gxf4, 26 Rxd6 fxe3, 27 Rxe3 Bh3, 28 g4 Qxg4 (0-1).

This was first played as Kosten-Hebden at Ramsgate 1982. A few months later, John Nunn had to step in as a substitute for Tal in a radio match against Timman. Nunn had seen the Ramsgate game, but knew little about anything else in the Marshall, so decided to try to follow Kosten-Hebden. He succeeded in doing so for 27 moves, when Timman diverged by resigning. Surprisingly, the whole game was played a third time later that year, as Ady-Hebden at Lewisham 1983.

23 ... Re6  
24 Qf2 h6  
25 c4!

I think this is a new move; in Hebden's only previous experience of this position his opponent played 25 Rxa6. Although I had prepared in advance the line I now play in the game, it does not seem to be adequate, so we must look earlier for an improvement.

25	...	Rg8
26	cxd5	Rxe3
27	Rxe3	gxf4
28	gxf4	Bf3+
29	Kf1	Bg2+
30	Kg1	

So White has a draw at least.

30	...	Bf3+
31	Kf1	Bg2+
32	Ke1!	Qxb2
33	Rxa6!	

I had assessed the position after move 32 as good for Black. White finds a clever plan to prove me wrong.

33	...	Bxf4
34	Nf1!	Bxe3
35	Qxe3	

35 Nxh2 Bxf2+, 36 Kxf2 Bxd5, 37 Rxh6+ Kg7 gives Black good drawing chances.

35	...	Qh4+
36	Kd2	Kh7
37	Ra7+	Kg6!
38	Qe6+	Kh5
39	Qxf5+	

39 Qg8 Qxd4+ draws.

39	...	Rg5
40	Qf7+	Rg6
41	Ra4	Bxf1
42	Qxf1	Qh2+
43	Qe2+	Qxe2+
44	Kxe2	Rg2+
45	Kf3	Rxb2
46	Kf4?	

Up to here, I can find no fault with White's play, but now White should play 46 Ra6, with Re6 to follow, to cut off the Black king.

46 ... Kg6  
 47 Ra6+ Kf7  
 48 Rxb6?

After this it is easy to draw, because the second d-pawn is no help when the king blockades them. After 48 Re5 Ke7?, 49 Ra7+ Kd8, 50 Ke6 wins, but 48 ... Re2+ then pushing the h-pawn seems to draw.

48 ... Ke7  
 49 d6+ Kd7  
 50 Ke5 Rb5+  
 51 d5 Rb1  
 52 Rh7+ Kd8  
 53 d7 Rb6  
 54 d6 Rxd6 !

Draw agreed.

(Notes by Simon Gillam).

David Dempster of Glenrothes, Fife has achieved the fine score of 7/8 so far in World Master Class WT/M/GT/164 with good chances of finishing on 11½/14. He mentions that a Czech opponent has 6½/7 but David has a won ending against him so a close finish is likely. He provides the next very entertaining game

ENGLISH OPENING (A 29)

White: Helmut Leserer (West Germany)  
 Black: D.H. Dempster (Scotland)

WT/M/GT/164

1 c4 e5  
 2 Nc3 Nf6  
 3 Nf3 Nc6  
 4 g3 Nd4

Sometimes moving a piece twice in the opening is OK! - a variation favoured by Timman and Korchnoi. A possible drawback is its drawish tendency.

5 e3?

Weakens W squares and must be inferior to usual 5 Bg2 when, after 5 ... Nxf3+

6 Bxf3 Bc5 7 d3 0-0 8 0-0 h6, chances are

even. 5 Nxe5 can be risky,  
 eg. 5 ... Qe7 6 Nd3?? Nf3 mate!

5 ... Nxf3+  
 6 Qxf3 Bb4  
 7 Nd5 Nxd5  
 8 Qxd5

Loses time - 8 cxd5 was better.

8 ... Qe7  
 9 a3 c6  
 10 Qe4 Ba5  
 11 b4 Bc7  
 12 Bb2 0-0  
 13 d4 f5  
 14 Qc2 a5  
 15 b5 f4  
 16 Bd3 exd4!  
 17 Bxb7+ Kh8  
 18 Bxd4 c5  
 19 Bb2 fxe3

Catching the W king in the centre.

If now 20 0-0, then 20 ... d5!

(threat ... d4), 21 cxd5 Bh3 wins exchange.

20 f4 d5!  
 21 cxd5

White must stop ... d4.

21 ... Bxf4!

The attack begins!

22 Rf1  
 22 0-0? loses quickly to 22 ... e2.  
 22 ... Bh3  
 23 Rxf4 Rxf4  
 24 gxf4 Qh4+  
 25 Ke2

25 Kd1?? loses to 25 ... Bg4+

26 Kc1 Qe1+ mate.

25 ... Qf2+  
 26 Kd3 c4+  
 27 Kc3 e2  
 28 Qd2 Kxb7

29 Re1 Re8

Better than ... Qf3+ at once.

30 Bc1

Nothing better.

30 ... Qf3+  
 31 Kb2 Bf5

Threatening ... Qb3+ and ... Qb1 mate.

32 Qc3 Qxd5  
 33 White resigns

33 a4 is forced but there is no answer to Black's plan of Qe4, Rd8, Rd3 and Rb3. 33 Qxa5 loses to 33 ... c3+!  
 eg. (1) 34 Ka1 Qb3 35 Qb4 (forced) Qxb4 36 axb4 Ra8 mate; (2) 34 Kxc3 Rc8+ 35 Kb2 (forced) Rc2+ 36 Kb1/a1 Qa2 mate; (3) 34 Qxc3 Rc8 35 Qb3 (35 Qd2 Qxd2+ 36 Bxd2 Rc2+) Qd4+ 36 Ka2 Rc2+ 37 Bb2 (forced) Qd2 38 Qb4 Rxb2+ 39 Qxb2 Qxe1.

(Notes by David Dempster)

Another player taking on foreign opposition is Steven Hilton of Greenock.

KING'S INDIAN (E 70)

White: S. Hilton (Scotland)  
 Black: S. Vresling (Denmark)

EU/1/GT/2216

1 d4 Nf6  
 2 c4 g6  
 3 Nc3 Bg7

3 ... d5 would lead to a Grünfeld.

4 e4 d6  
 5 Nge2

An unusual move in this position - the ideas are similar to the Samisch variation.

5 ... 0-0

A major alternative is 5 ... e5 Botvinnik-Smyslov 1941.

6 Ng3 e5  
 7 d5 c6  
 8 Be2 cxd5  
 9 cxd5 a6  
 10 h4 h5

This reply is forced as White threatened to push on with h5.

11 a4

To stop Black's expansion on Q-side with b5.

11 ... Nbd7  
 12 Bg5 Qb6

Eying White's b pawn.

13 a5! Qc7

Critical decision for Black; it is too dangerous for Black to take the b pawn, eg. 13 ... Qxb2 14 Bd2 Nc5 15 Ra2 Qb3 16 Qa1 followed by 17 0-0 and 18 Rb1.

14 Qd2 Re8?!

I expected Nc5 here, to which I would have replied with 15 Ra3.

15 b4

To stop the Black knight coming to c5.

15 ... b5  
 16 Rc1 Qb8  
 17 Bh6  
 ½ ½

I offered a draw here, which was accepted. I am sure that White is better but I could not see a quick and decisive breakthrough for White. The Black knight is obviously heading for f8 and h7, adding to Black's defensive prospects.

(Notes by Steven Hilton).

Phil Giulian is a regular contributor to the Games Column. I hope he doesn't feel he is giving away too many of his Opening secrets!

Q.G. DECLINED (D 37)

White: P. Giulian  
Black: A. Marchant

British Championships Candidates 1985-6

1 d4 d5  
2 c4 e6  
3 Nc3 Nf6  
4 Nf3 Be7  
5 Bf4

The more usual Bg5 may be better as the move played seems to allow Black equality.

5 ... O-O  
6 e3 c5  
7 dxc5 Bxc5  
8 Qc2 Nc6  
9 a3 Qa5  
10 Nd2?

Avoiding the "maid" line of 10 Rdl which allows Black equality, eg. 10 Rdl Be7 11 Nd2 e5 12 Nb3 Qb6! 13 Bg5 d4 14 Bxf6 Bxf6 15 Nd5 Qd8 16 Bd3 g6 17 exd4 Nxd4, and Black has equalised.

10 ... Be7?

Inviting 11 Rdl transposing to the "main" line. 10 ... Bb4 is interesting, eg. 11 Rcl Bxc3 12 Qxc3 Qxc3 13 Rxc3 e5, and the position is equal.

11 Bg3

So that if Black plays e5 at some stage, the bishop is not attacked.

11 ... d4??

Better is ... Qd8.

12 Nb3 Qb6

13 exd4

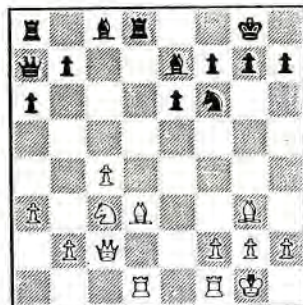
Unfortunately 13 c5 Bxc5 14 Na5 Bb4+ gives Black a strong attack for the material sacrificed.

13 ... Nxd4  
14 Nxd4 Qxd4  
15 Bd3

Now Black is in real trouble. His queen is vulnerable in the centre of the board and he has difficulty completing his development. If now Bd7, White plays Rdl followed by Bxh7+.

15 ... a6  
16 O-O Rd8  
17 Rad1 Qa7?

Better to keep the queen on a more active square.



18 Bh4

Beginning the weakening of Black's kingside. The threat is Bxh7+ and if 18 ... g6 19 Ne4 Nxe4 20 Bxe7 Re8 21 Bxe4 Rxe7 22 Rd8+ Kg7 23 Qc3+ with a strong attack.

18 ... h6  
19 Ne4 g5  
20 Nxf6+

Makes it difficult to co-ordinate the king's defence.

20 ... Bxf6  
21 Bg3 b6  
22 f4

Opening more lines to the Black king.

22 ... b5+  
23 Kh1 bxc4  
24 Bh7+!

Driving the Black king to a vulnerable square.

24 ... Kg7  
25 fxg5 hxg5



26 Rxf6!!

26 Be5 wins the exchange but the move played is much stronger.

26 ... Rxd1+  
27 Qxd1 Kxf6

If 27 ... Kxh7 28 Qh5+ Kg7 29 Qxg5+ Kf8 30 Bd6+ Ke8 31 Qg8+ Kd7 32 Rxf7+ winning the Black queen.

28 Qd8+ Kg7

If 28 ... Qe7 29 Be5+ wins the queen.

29 Be5+ Kxh7

If 29 ... f6 30 Qg8+ mates.

30 Qf6 Resigns

1 0

(Notes by Phil Giulian).

Stephen Clark of Irvine, Ayrshire has acquired the knack of winning in under 30 moves.

NIMZO INDIAN DEFENCE (SPIELMANN VAR) (E32)

White: Gisela Henker (Leipzig, DDR)  
Black: Stephen L. Clark (Irvine)

Europe Class 1 1985-86

1 d4 Nf6  
2 c4 e6  
3 Nc3 Bb4  
4 Qb3

Spielmann Variation.

4 ... c5  
5 dxc5 Nc6  
6 Nf3

Foguelman v Ivkov, Amsterdam 1964 used 6 Bd2 Bxc5 7 e3 O-O 8 Rcl b6.

6 ... Ne4  
7 Bd2 Nxc5  
8 Qc2 f5  
9 e3 O-O

So far Bogoljubow v Nimzowitch, San Remo 1930, then play went 10 Be2 b6 11 O-O-O Bb7 12 a3

10 a3 Bxc3  
11 Bxc3 b6  
12 Be2 Bb7  
13 O-O Rc8

Although a backward 'd' pawn, Black has a good position.

14 Rfd1 Qe7  
15 b4

Better is Nd2 allowing either f3 or Bf3.

15 ... Ne4  
16 Bel?

Bb2 is the only move.

16 ... Rf6!  
17 Nd4 Rg6

18 Bf1 Ng5

Heading for f3.

19 Kh1 Nxd4

20 exd4

If Rxd4 e5 21 Rdd1 Be4 22 Bd3 Bxg2+!!

20 ... Nf3

21 h3 Qh4

White resigns.

If gxf3 then Qg5.

If White had played 21 Be2 Nxe1

22 Rxe1 Bxg2+ 23 Kg1 Bh3+ 24 Kh1 Qg5

25 Rg1 Bg2+ (or 25 Bf3 Bg2+).

(Notes by Stephen Clark)

### Q PAWN - VERESOV SYSTEM (A 46)

White: Stephen L. Clark

Black: Frank Barbagello

### BCCA Handicap 1985-86

1 d4 Nf6

2 Nc3 d5

3 Bg5 h6

4 Bxf6 exf6

With h6 this is the only advantage to double the 'f' pawns.

5 e3 c6

6 Bd3 Bd6

7 Qf3 O-O

8 Nge2 Re8

9 O-O-O b5

10 g4 b4

11 Na4 Nd7

12 h4 Nb6

13 Nxb6 axb6

14 Kbl

Here Tal played g5 against Geller at Curacao in 1962, only to lose in 42 moves.

14 ... Qe7

15 g5 b3

16 cxb3 Qa7

17 Nc1

This tidies up White's defence.

17 ... fxg5

18 hxg5 hxg5

19 Qh5 Kf8

20 Qxg5 Kg8

21 Rdg1 f6

22 Qh5 Bg4

This is a last minute sac hoping for a mistake.

23 Rxxg4 Resigns

Black must lose even more material to avert the mate.

(Notes by Stephen Clark).

### NIMZO INDIAN DEFENCE (RUBINSTEIN VAR) (E54)

White: Stephen L. Clark (Irvine)

Black: Rudolf Schiefner (Stuttgart, BDR)

### Europe Class 1 - 1985.

1 d4 Nf6

2 c4 e6

3 Nc3 Bb4

4 e3 c5

5 Bd3 d5

6 Nf3 O-O

7 O-O Nc6

8 a3 Bxc3

9 bxc3 dxc4

10 Bxc4 Qc7

11 a4

Theory so far, ie. M.C.O. Vol 11.

11 ... b6

12 Ba3 Bb7

13 Qe2

Better than 13 dxc5 Na5 14 Ba2 Rfd8

15 Qe2 bxc5 16 Qb5 Ne4.

13 ... Rfd8

14 Rfd1 h6?

A loss of time; better is cxd4 15 exd4 Na5 =

15 Ba2 Ne4

16 Rac1 Rac8

17 Bb2 cxd4

18 exd4 Na5

19 Ne5

I have good play here whilst Black has weaknesses at both e6 and f7 squares.

19 ... Qe7

20 f4 Nd6

21 Ba3 Qe8



22 Bxd6!

White can now give up the good Bishop.

22 ... Rxd6

23 f5 Qxa4

24 fxe6 fxe6

25 Rf1 Qe8

26 Bb1 Rc7

27 Bg6 Qc8

28 Qd3 Resigns

There is no defence to 29 Bh7+ Kh8 30 Ng6+ Kxh7 31 Nf8 double check with mate to follow.

(Notes by Stephen Clark)

### GRUENFELD DEFENCE (D 70)

Black: K Peter Lentze (Magdeburg, DDR)

White: Stephen L. Clark (Irvine)

### Europe Class 1 - 1985

1 d4 Nf6

2 c4 g6

3 f3

This was new to me with no mention in Gruenfeld Def by Botvinnik and Estrin, but see MCO-11, line 44-45.

3 ... d5

4 cxd5 Nxd5

5 e4 Nb6

6 Be3 Bg7

7 Nc3 O-O

8 f4 Nc6!

### MCO

9 Nf3

If 9 d5 as MCO, Black must play Nb8.

9 ... Bg4

10 d5 Nb8

11 h3 Bxf3

12 Qxf3 c6

13 Rd1 cxd5

14 exd5 Nc8

To occupy d6.

15 Bd3 Nd6

16 h4 h5

17 g4 hxg4

18 Qxg4 Qc8

An attempt to get the queens off - fortunately unsuccessful.

19 Qg2

White has a good attack but his king is very open.

19 ... Na6

I think better than Bxc3 20 bxc3 Qxc3 as I lose the good Bishop for a pawn.

20 h5 Nb4  
 21 hxg6 Nxd3+  
 22 Rxd3 Qf5  
 23 gxf7+ Kxf7  
 24 Rdd1 Rh8  
 25 Ke2 Bxc3  
 26 bxc3 Rag8  
 27 Qf1 Qe4  
 28 Rxh8 Rxh8  
 29 Qf2 Nf5  
 30 Resigns

The threat is Nxe3 then Rh2+.

If 30 Rd3, then Rg8, or if  
 30 Rf1, then Rh3.

(Notes by Stephen Clark).

Finally, Alan Norris, 1984/85 Scottish  
 Champion has sent a very well annotated  
 game against Tim "The Book" Harding.

RUBINSTEIN SYSTEM (A 34)

White: A.J. Norris (Scotland)  
 Black: T.D. Harding (Ireland)

2nd North Atlantic Team Tournament.

1 c4 c5  
 2 Nc3 Nf6  
 3 g3 d5  
 4 cxd5 Nxd5  
 5 Bg2 Nc7

The plan behind Black's play is to gain  
 space in the centre with pawns at c5 and e5,  
 cramping White's pieces and making a strong  
 square at d4 for a knight. White will  
 attack Black's centre with a blow from the  
 flank, either a3 planning b4, or as in this  
 game f4! destroying the centre.

6 d3!?

Waiting for 6 ... Nc6? 7 Bxc6! bxc6 8 Qa4.  
 Black has very weak pawns on the queenside.  
 The two bishops are not enough compensation.

One example - 8 ... Bd7 9 Nf3 f6  
 (preventing Ne5) 10 Be3 e5 11 Ne4 Ne6  
 12 Rcl Qb6 13 Nfd2 Rb8 (of course not  
 13 ... Qxb2 14 Rbl, with egg on your  
 face!) 14 Nc4 Qc7 15 b3 Rb7 16 Qa5!  
 When Black has such weak pawns as here  
 on the queenside, Endings!! are a big  
 threat to Black. 16 ... Qb8 17 0-0 Rh5  
 18 Qc3 ± (Sanguinetti v Dolkin,  
 Moscow 1956). An afterthought for  
 White is 11 Qa5 Ne6 12 Qxd8!!, with a  
 very good Ending.

6 ... e5  
 7 Nf3 Nc6  
 8 0-0 Be7  
 9 Nd2

Asking Black if he will allow

10 Bxc6 bxc6, Black's response is a firm  
 "No"!

9 ... Bd7!  
 10 Nc4 f6

The modern variation is 10 ... 0-0,  
 offering the e pawn as a gambit for  
 White's white-squared bishop. I think  
 White should play 11 a4 so that if  
 Black plays 11 ... f6 12 f4 reaches my  
 game with Harding.

11 a4!

Author J.L. Watson considers the move  
 slow. What does he mean? I would  
 think of it as positional and correct,  
 maintaining an outpost at c4 and  
 cramping Black on the queenside where  
 he has a "three pawns to two" majority.

11 ... 0-0

PLEASE SEND GAMES  
 WITH ANNOTATIONS TO  
 DOUGLAS M. BRYSON,  
 38 DUNCRYNE AVENUE,  
 MOUNT VERNON,  
 GLASGOW G32 0RQ.

12 f4 exf4



13 gxf4!!

White's game plan is to attack Black on  
 the kingside using the open "g" file  
 and the half-open "h" file.

13 ... Be6  
 14 f5 Bf7

Or 14 ... Bxc4 15 dxc4. Black has  
 problems on the queenside due to White's  
 strong king's bishop which has no  
 opponent, and on the white squares in  
 general.

15 Rf4 Qd7

Attacking White's "f" pawn and so  
 stopping White's rook from going to  
 g4.

16 Qf1!

Protecting f5 to free the rook.

16 ... Rad8  
 17 Rg4

Threatening Bh6.

17 ... Kh8  
 18 Be4

Frees the queen from the duty of  
 defending f5, and also clears the  
 "g" file for Rag1 in the future part of

White's plans.

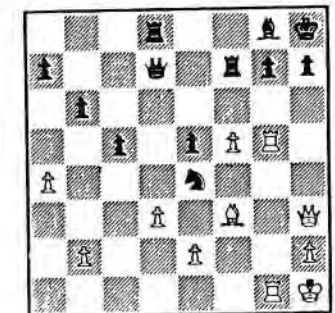
18 ... Ne5!  
 19 Nxe5 fxe5  
 20 Qh3!

Threatening 21 f6, with mate at h7 and  
 a fork at g7 and e7 - not bad for one  
 move.

20 ... Ne8!  
 21 Bg5! Bxg5

Or 21 ... Nf6 22 Rh4 h6 23 Bxf6 Bxf6  
 24 Rxh6+ gxh6 25 Qxh6+ Kg8 26 Qxf6 ±.

22 Rxg5 . Nf6  
 23 Kh1 Bg8  
 24 Rag1 Rf7  
 25 Bf3! b6  
 26 Ne4 Nxe4



27 dxe4!!

The most difficult move of the game in  
 many respects. What is the point of  
 the move? One advantage is that White's  
 Bishop can still go to h5!, which is  
 an important attacking resource.  
 Another point is that White is thinking  
 of exchanging his two rooks for Black's  
 queen and "g" or "e" pawns (as in note A  
 to Black's 28th move), which would make  
 White's centre pawns passed and make  
 the win simple.

What else! - White has a direct threat in 28 Qg3 attacking e5 and g8 through g7, eg. 27 ... Re8? 28 Bh5 +-, or 27 ... Re7!?

28 Qg3 Rf8 unclear ± 28 Bh5! Qxa4 29 Qg4 Rd1 30 f6! +.

28 Bh5! Qxa4!?

Or A. 28 ... Rf6 29 Rxf7 Qxf7 30 Rxf7 Kxf7 31 Qg3+ Kf8 32 Qxe5 +-, or B. 28 ... Re7 29 Qg3! hxc5(?) 30 Bg6 Bh7 31 Qh3 Kg8 32 Qxh7+ Kf8 33 Qh8 mate.

29 Rg5g4

And not 29 Bxf7 Qxe4+! 30 Qg2 Qxg2+ 31 R5xg2 Bxf7, which is unclear.

29 ... Rf6

30 Qh4!!

Protects e4 and so threatens 31 Rxf7, when Black's house falls in like a deck of cards.

30 ... g5!?

A last try.

31 Rxf7!! hxc5

32 Qxg5 Rf7

What else? 32 ... Qxe4+ 33 Bf3 just add to Black's problems.

33 Qxd8

I offered the conditional 33 ... Rg7 34 Rxf7! Kxf7 35 Qg5+ Kh8 (or 35 ... Kf8 36 Qf6+ Bf7 37 Qxf7 mate) 36 Qf6+ Kh7 37 Bg6+ Kh6 38 Bf7+ (or e8!) Kh7 39 Qg6+ Kh8 40 Qxg8 mate, so Black resigned. 1 - 0

My present score is 5/6 and the three remaining games look +-, so it looks good for the norm which is 6½ points.

(Notes by Alan Norris).

**FERNSCHACH**, the official monthly magazine of the International Correspondence Chess Federation (ICCF)

Contains interesting games, all ICCF results and news of World and European Team and Individual competitions. Indispensable for all serious CC players.

Obtainable at £13.00 per annum from Chess Suppliers (Scotland) Ltd., PO Box 67, 15 Hope Street, Glasgow G2 6AB

#### Previous News Bulletins

We have a limited supply of previous News Bulletins available. These can be obtained at 50p per copy or £5 for a set of issues nos. 1 to 10, inclusive of postage, from :-

A.P. Borwell, 8 Wheatfield Avenue, Inchtute, Perthshire.

There must be many hundreds of correspondence games played by Scottish players each year. Surely among all these games, there will have been a few that were particularly memorable for the players concerned. Therefore, why not share your happy experiences with readers of the SCCA magazine by annotating your best games.

Please send games (preferably annotated) to our Games Editor:-



Douglas M. Bryson,  
38 Duncryne Avenue,  
Mount Vernon,  
Glasgow G32 0RQ.

#### Played in Scottish CC League 1984/5

White: D.L. Gillespie  
Black: A.P. Borwell

English Opening (A 25)

1 c4

This is a deceptively innocuous opening move which influences the central squares, without direct occupation. The game often involves a battle for control of d5. To assist with this, White usually uses a kings-side bishop fianchetto (ie. on g2). Black can either keep a symmetrical position by, for example, 1 ... c5, also with a kings-side fianchetto or try to steer the game his own way.

1 ... e5

This is like a Sicilian Defence reversed but, of course, White has a move in hand and therefore should try to attack - which is not so easy!

2 Nc3 Nc6

3 g3 f5

Black ignores the "hole" at d5 and pursues his own plans to attack on the king's side. White's slow development allows Black the opportunity to play these pawn advances but he must be careful not to leave weaknesses in his position.

4 Bg2 Nf6

5 d3

This is best and gives White some options - he can try to "entice" Black's kings pawn to e4 at some stage and then use the black squares f4 and d4.

5 ... g6

Nowadays I am not a "fianchetto" enthusiast, having reached too many sterile positions from such openings. Therefore, I like dynamic positions which I feel tend to arise more from the more natural central development of bishops. I have one distinguished ally in Paul Keres but suspect that most grandmasters would disagree!

6 Bg5 Bg4

My last comment should have flagged this intention!

7 e3 h6

8 Bxf6

My opponent gave a conditional move here of "if 8 ... Qxf6 then 9 Nge2". However, it is much better to disrupt White's pawn structure before recapturing.

8 ... Bxc3ch

9 bxc3 Qxf6

10 Ne2 d6

11 0-0 Bd7

Black reserves the option of castling either side and avoids possible disruption of his pawns. However, if White did play BxN, he would leave his position vulnerable on the white squares in front of his king. The bishop on the diagonal and the half-open "b" file gives White pressure on the Q side.

12 Rb1 Rb8

Not ideal but preferable to 12 ... b6 as Black could have problems in castling K side and the self-imposed pin of his knight could be troublesome.

13 Rb2 b6

14 Qc2

Subtle, I did not anticipate a "double shuffle" by the white queen. However, there are good attacking possibilities for Black on the K side if White weakens his defences.

14 ... 0-0

15 Qa4 e4

Forced, but planned. Black vacates the e5 for his knight, which will then expose the white queen to his guarded bishop. Usually, a critical position is reached in every game - this is it!



16 d4

This is a cautious and also probably the losing move. White should try 16 dxe4 when Black would continue 16 ... fxe4. A possible continuation might be 17 Bxe4 Ne5 18 Qxa7 Bh3 19 Bg2 Nf3ch 20 Kh1 Bxg2 21 Kxg2 Nelch 22 Rxe1 Qxf2ch 23 Kh3 Qxel etc.

16 ... Qf7!

The key move, defending the bishop (thereby freeing the knight), putting pressure on the c4 pawn and also with an eye on Qh5 (after g5).

17 d5

Now Black has two superb squares for his knight, ie. c5 and e5, to support a king-side advance. Although White can occupy d4, this does not present much threat to Black.

17 ... Na5

18 Qb4

Naturally he guards his weak pawn on c4, although it is doomed to fall.

18 ... Nb7!

Knights are better centrally positioned than on the edge of the board - White's queen is also rather short of squares.

19 Nd4 Nc5

Threatens to fork Q and R by 20 ... Nd3.

20 Qa3 a5

21 Rfb1

It cannot be good to weaken the defence of f2 but it is difficult for White to find any constructive plan.

21 ... Rbe8

Over-protecting the "e" pawn prior to a kings-side pawn advance. It is always wise to make sure that counterplay chances are minimised when you have a "positional bind".

22 Re2

White cannot play f3 unless his e4 is defended.

22 ... g5

23 Qc1 Nd3

Heading for the even stronger square of e5!

24 Qd2 Ne5

I was not really looking to simply win the pawn on c4 but it leads to even more important possibilities.

25 Nb5

White is concerned also about his "d" pawn and therefore has to allow the exchange of his good knight for Black's inactive bishop.

25 ... Nxc4

26 Qd4 Bxb5

27 Rxb5 Ne5

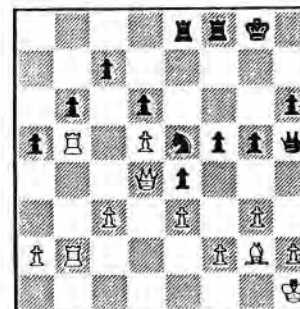
There is no need to hurry in these kind of positions. The bind must be maintained and the knot tightened.

28 Kh1 Qh5

The strength of Black's 16th move can now be seen to the full - the timing of this queen entry is conclusive.

29 Reb2

White is still hoping to be able to defend against Black's K-side threats but too many of his major pieces have been deflected elsewhere.



29 ... Nf3!

Threatening both checkmate and White's queen, therefore the next move is forced. The "knight hopping" now is ended!

30 Bxf3 exf3!

For future magazines, I would like some interesting games from Major or Quartet players to analyse in a similar manner. If you have a few notes of your own it would be useful, although not essential.

Best, although 30 ... Qxf3ch

31 Kg1 f4 would also win - this is more dynamic (and prettier!). Black threatens 31 ... Qh3 so White's next move is forced.

31 Qd1 f4

White resigns.

If 32 exf4 Qh3 33 Qg1 Rel!! when 34 ... Qg2ch will be mate even if he doesn't capture the rook!

If 32 gxf4 Rxf4 (32 gxf4 is also good but less spectacular!) with one threat being Rh4 and another 33 ... Qh3 34 Qg1 Rg4 etc.

This was not a perfect game by Black but it demonstrates the importance of strong squares and exploits pawn weaknesses.

Bishops are better operating on squares which are not occupied by your own pawns. If you are only going to have one bishop, then your pawns are better on the opposite colour - especially if your opponent has a bishop on the same coloured square as your own. Try to force his pawns onto the same colour as his bishop.

Knights are normally stronger if they are centrally placed in middle game situations, especially if they are on strong secure squares. The square in front of doubled pawns is often a splendid outpost for an enemy knight.





from REG GILLMAN

ASCENSION TOURNAMENTS ?

International CC in this country suffers a little from translation. In the original German, the class tournaments of the ICCF are called, "Aufstiegsturniere". A nice word which trips easily from the German tongue and means that one can go up in the tournaments. It has been given in English as "Ascension Tournaments" which seems to mean that the tournaments go up.

The term "Ascension Tournaments" is rarely used because it simply does not convey the right idea in the English language. We call them "World Tournaments" or "European Tournaments" which is how they are divided, or we call them "Class Tournaments" which is how they are sub-divided, i.e. Master Class, Higher Class, Classes I, II and III (Class III is suitable for beginners). But Ascension? Yuk! It has a sort of religious connotation which is fine for a piece of organ music but hardly suitable for correspondence chess.

And so, having called them "Class Tournaments" for the past twenty years or so, I have given a little thought to the correct translation of the word, "Aufstiegsturniere" and lo and behold, it was there all the time, just waiting to be discovered!

Ta-rah, ta-rah, tum, tum ta-rah! \* PROMOTION TOURNAMENTS \*  
 \*\*\* \*\*

No? Oh, well, I suppose it doesn't set the world alight. But it surely must be better than that horrible "Ascension" stuff. In any case, whatever you call them, they are extremely well organized and highly recommended. Why not give it a whirl?

The tournaments are organized in 7-player sections which start as soon as entries are received from seven different countries. So in theory, you should get six opponents, each from a different country. In practice however, one or two countries predominate and one sometimes has two opponents from Russia or East Germany. When you start to play in ICCF, you can choose whether to begin in Class I, II or III. If you pick Class II, it is necessary to win a section before you can go up to Class I. If you score less than a third of the possible points, you go down to Class III.

The entry fee is £3.50 payable to BPCF and sent to Michael Anderson, 3 Winterfield Gdns, DUNS, Berwickshire, TD11 3EZ. In the European Tournament only, there are 15-player sections for which the entry fee is £4.50 (a bargain). Be sure to tell Michael which tournament you wish to enter and which class. And especially tell him that you are a member of the Scottish C.C.A. I am sure you will enjoy your games.

Recent entries from SCCA players are:

Aug/Sept 1985	D.H. Dempster	Euro Master Class
	I.S. Campbell	Euro Master Class
Oct/Dec 1985	Mrs. J. McMenemy	World 3rd Class
Jan/Mar 1986	G.D. Pyrich	World Master Class
	A.P. Borwell	World Master Class
	S. Hilton	Euro 1st Class

Surely Scotland can do better than this? - only 6 entries since last summer!

(Editor)

# International events

by Richard Beecham.

Our chess friend from Denmark, Jørgen Axel Nielsen, reminded me that no conclusion had been reached in the friendly international match Scotland v Denmark which started in 1981!

I am happy to announce that the match ended in an honourable draw! The individual results are as follows :-

Bd	Scotland	Sc	Dk	Denmark
1	A.P. Borwell	1	1	A. Poulsen
2	D.M. Bryson	0	2	F. Gasseholm
3	P.M. Giulian	1	1	B. Kolvig
4	I.S. Campbell	1	1	H.H. Vognesen
5	D.M. Jenkins	1	1	L. Johansen
6	R.W.M. Baxter	2	0	E. Spanget-Larsen
7	A.T. Hislop	1	1	V. Rosenlund
8	G.D. Pyrich	0	2	M. Tettinek
9	S.R. Gillam	1½	½	P. Jensen
10	Dr. V.A. Nye	1	1	C. Ertbjerg
11	G.W.G. Livie	1½	½	W. Abrahamsen
12	T.J. Craig	½	1½	K. Larsen
13	W.S. Roach	1½	½	F. Larsen
14	A.J. McClelland	1	1	V. Wraae
15	A. Kirkland	½	1½	K. Eriksen
16	A.C. Petrie	1	1	P. Skov
17	J. Williams	0	0	J. Jensen
18	D.M. Livie	2	0	J. Nielsen
19	D.J. Savage	2	0	R. Petersen
20	D. Crichton	1	1	R. Nielsen
21	K. Warren	0	2	H. Berg
22	A.M. Anderson	½	1½	F. Olsen
23	G. Scholes	0	2	A. Sorensen
24	M. Dyer	0	2	S. Hove
25	B. Goodwin	1	1	P. Kristensen
26	T.S. Wickens	2	0	P. Anthoni-Andreasen
27	G.M. Anderson	2	0	J. Stahl
28	A. Millar	2	0	P. Toftso
29	D.G. McRoberts	1	1	J. Jensen
30	Mrs J. Chalmers	0	2	A. Kastberg
		29	29	

EUROPEAN TEAM TOURNAMENT

Points at 25/6/86 :

1.	Soviet Union	39½/54	=	73%
2=	Hungary	47/79	=	59%
2=	Sweden	45/76	=	59%
4=	France	46/83	=	55%
4=	DDR	46/83	=	55%
6	Portugal	34/74	=	46%
7	SCOTLAND	35/79	=	44%
8	Ireland	28/75	=	37%
9	Belgium	31/93	=	33%

For details, see next page.....

The match has now started against the Soviet State of the Ukraine and the pairings are given below. I have asked the Ukraine team captain Paul Darmogray to write an article on correspondence chess in the Ukraine and hopefully his article will appear in a future issue of "News Bulletin".

Bd	Scotland	Ukraine
1	A J Norris	V K Bratsev
2	A P Borwell	B B Zhugla
3	S R Gillam	A J Bangiev
4	S Mannion	V G Skotarenko
5	C R Beecham	P Darmogray
6	G D Pyrich	G F Topchy
7	G W G Livie	S P Kuznetsov
8	K W C Stewart	P N Tchernyakhovsky
9	R Inglis	K Y Venglovsky
10	I A Marks	V S Izmailov
11	R Mitchell	J N Kulibaba
12	I Marshall	E F Shtefan
13	I Mackintosh	A V Yeremenko
14	G Sprott	V G Stulnikov
15	G Wood	A R Treguba
16	A Hind	V V Kuznyansky
17	T McMorran	A M Farionov
18	D Savage	Y D Setchin
19	K D Anderson	N N Khomenko
20	K Gordon	N S Zinovatny

It is hoped that the match with Argentina will start on 1st August 1986. The matches against Italy and Israel have been delayed. Not all countries have an international request list and these delays are caused when not enough members put their names forward for selection

Finally, for those members playing in International or ICCF events, I should like to recommend "The Code Book" by Erik Larsson. It is a 32-page booklet containing 22 useful phrases in 24 different languages. It also has many useful tips for postal players. To obtain a copy, please write to E. Larsson, Box 38, S-244 03 Dösjebro, Sweden. Price £1.00.

'100' CLUB

Why not join our Club ?  
 We need your support please.  
 Only £1 per month per unit.  
 Details on page 2.



2nd North Atlantic Team Tourney

BD.1	P.M. GIULIAN I.M.=75% ●	TEAM	1	2	3	4	5	6	7	8	9	10	Pts.
1	E. GIBNEY	IRL	□				1/2						
2	A. B. MOURA	POR.		□									
3	A. M. STEWART	GBE			□	1/2				1			
4	P. A. LAMFORD	GBW			1/2	□				1/2	1/2		
5	K. V. BRIVAINIS	USA	1/2				□						
6	Z. L. SAROSY	CAN						□					
7	F. CHEVALDONNET	FRA							□				
8	P. M. GIULIAN ●	GBS			0	1/2				□			
9	E. PASCUAL	SPA				1/2					□		
10	J. A. PALSSON	ICE										□	

BD.2	T. S. WICKENS 1/2 I.M.=65% ●	TEAM	1	2	3	4	5	6	7	8	9	10	Pts.
1	A. DOYLE	IRL	□			1	1/2	1/2	1/2		1/2		
2	V. C. ABRANTES	POR		□									
3	T. THOMAS	GBE			□	1/2				1			
4	J. D. THORNTON	GBW	0		1/2	□					1/2		
5	S. GRANT	USA	1/2				□	1/2				1/2	
6	A. J. UGGE	CAN	1/2				1/2	□					
7	E. SAVOSTIANOFF	FRA	1/2						□				
8	T. S. WICKENS ●	GBS			0					□			
9	R. CRUSI	SPA	1/2			1/2					□	1/2	
10	H. OLAFSSON	ICE					1/2				1/2	□	

BD.3	G. MORRISON 1/2 I.M.=70% ●	TEAM	1	2	3	4	5	6	7	8	9	10	Pts.
1	T. FAYNE	IRL	□										
2	R. M. LAVRADOR	POR		□		1				1/2			
3	M. ALCOCK	GBE			□		0			1/2			
4	D. K. EVANS	GBW		0		□	1/2			0			
5	K. K. DEHMELT Jr.	USA			1	1/2	□						
6	Z. LESKOWSKY	CAN						□					
7	A. DOBRININE	FRA							□				
8	G. MORRISON ●	GBS		1/2	1/2	1				□			
9	L. LLAVERIAS	SPA									□		
10	J. Th. THOR	ICE										□	

BD.4	A. J. NORRIS 1/2 I.M.=70% ●	TEAM	1	2	3	4	5	6	7	8	9	10	Pts.
1	T. D. HARDING	IRL	□						1/2	0			
2	V. L. CORDEIRO	POR		□					0	1/2			
3	P. J. SOWRAY	GBE			□	1	1			1/2		1	
4	C. I. PRICE	GBW			0	□	0			0			
5	M. E. ZAVANELLI	USA			0	1	□	0					
6	B. V. DOUTHWAITE	CAN					1	□					
7	J-M. MASUREL	FRA	1/2	1					□	0		1	
8	A. J. NORRIS ●	GBS	1	1/2	1/2	1			1	□		1	
9	A. PADROS	SPA									□		
10	B. MAGNUSSON	ICE			0				0	0		□	

continued .. . . .

BD.5	T. J. CRAIG 1/2 I.M.=75% ●	TEAM	1	2	3	4	5	6	7	8	9	10	Pts.
1	R. MONTGOMERY	IRL	□										
2	J. D. SOUSA	POR		□									
3	T. CHAPMAN	GBE			□		1/2			1	1/2		
4	R. M. BOLLEN	GBW				□							
5	B. F. GIBBONS	USA			1/2		□						
6	C. PARE	CAN						□					
7	A. LELIEVRE	FRA							□				
8	T. J. CRAIG ●	GBS					0			□			
9	J. PAREDES	SPA			1/2						□		
10	J. HALFDANARSON	ICE										□	

BD.6	C. R. BEECHAM 1/2 I.M.=75% ●	TEAM	1	2	3	4	5	6	7	8	9	10	Pts.
1	J. F. GIBSON	IRL	□			1	1/2						
2	R. S. RALHA	POR		□	1								
3	J. E. HAWKES	GBE	0	0	□	0				1/2			
4	G. CANTELLO	GBW	1/2		1	□	1/2	1/2	1/2	1			
5	Dr. J. EVENTOV	USA				1/2	□						
6	R. E. SIEMMS	CAN				1/2		□					
7	P. BELLUIRE	FRA				1/2			□				
8	C. R. BEECHAM ●	GBS			1/2	0				□		1/2	
9	J. BOADA	SPA									□		
10	B. I. KARLSSON	ICE									1/2	□	

BD.7	G. D. PYRICH 1/2 I.M.=80% ●	TEAM	1	2	3	4	5	6	7	8	9	10	Pts.
1	D. FENNELLY	IRL	□										
2	N. S. AMARAL	POR		□									
3	D. J. R. BARNES	GBE			□	1				1			
4	J. TIPLADY	GBW			0	□						1/2	
5	G. D. BERRY	USA					□						
6	D. MacLEOD	CAN						□					
7	F. FARCY	FRA							□				
8	G. D. PYRICH ●	GBS			0					□			
9	F. J. MUNOZ	SPA									□		
10	T. SAEMUNDSSON	ICE					1/2					□	

BD.8	S. R. MANNION 1/2 I.M.=80% ●	TEAM	1	2	3	4	5	6	7	8	9	10	Pts.
1	O. O' SIOCHRU	IRL	□			1/2							
2	P. M. PALHARES	POR		□									
3	P. F. TIMSON	GBE			□	1				1/2	1		
4	K. O. JONES	GBW	1/2		0	□							
5	R. A. HAAG Jr.	USA					□	1		1/2			
6	L. NEUBAUER	CAN					0	□	0				
7	H. PINSON	FRA							1	□			
8	S. R. MANNION ●	GBS			1/2		1/2			□			
9	J. L. LOPEZ	SPA			0						□		
10	B. THORBERGSSON	ICE										□	

## Reader's letter :-

"Graham Wood's letter in Issue No. 19 has prompted me to put pen to paper. Graham should never admit to owning just a "dog-eared copy of MCO" written in descriptive notation - this gives his future opponents some very useful information! All an opponent needs to know is Graham's favourite openings, check an old MCO and search for the improvements in the more modern editions of ECO or BCO. Improvements have been found and opinions on many variations have changed since the 60's and 70's.

I should like to suggest that next birthday or Christmas, Graham spend some money on a more up-to-date library!

A general openings book such as Batsford Chess Openings or one of the specialist volumes of ECO along with a couple of "favourite" opening books would be alright but a tournament book is also very important because a lot goes on after the opening! These new books can be backed up by regular visits to the local library.

Graham's tongue-in-cheek comment about John Hawkes .."buried deep within the ultimate compendium of all known chess games, every game ever played completely cross-referenced and continually being updated week by week".. is in fact perfectly true and I'm sure John Hawkes does precisely that, because that's what I do!

Being Scotland's International Secretary has many advantages - countries we are playing or have played in the past kindly send me regular copies of their magazines and this is an important part of having an up-to-date library for me. I also buy a couple of Russian magazines and Chess Informant from Yugoslavia.

Having collected games of the same opening system in their entirety, I study the material, where the basic strategic ideas of the system in question are clearly illustrated, then from other games I look at the dynamic character of the struggle.

The problems of understanding opening theory are very complex because they are related to the general standard of the player but the learning should consist of a history of the development of the opening ideas along with the basic principles and aims of the opening. The learning of concrete systems and variations which make up the particular opening can then be studied.

Having said all this, I find that playing at Master Class level very few players follow "book" or fashionable lines of play as improvements in these lines can be found while your game is in progress and one can end up with a lost game from the opening!

Graham's suggestion of a games section with "Games for Lesser Mortals" and "going back to basic principles" increases my feeling that his library needs a complete upgrade.

(I think Graham's idea was a good one - all I need now is games which would be useful to describe some of the basic principles for future editions!  
- Editor)

Regarding the name "News Bulletin", I find it very acceptable, particularly as all members are now very familiar with the title. We already have book titles of "Gambit" and "Hard Pawn", the Russians have the magazine "64" (Why not "64cc"?). I know of a restaurant called "En Passant", "Last Post" reminds one of Custer's last stand, and "Square Basher" of the Army. If the title is to be changed, then it should be as soon as possible because the Association should be applying for an ISSN number shortly.

Finally, all I would say to Graham when he is learning his new openings is ... Crescat scientia, vita excolatur!  
(Success will come with familiarity).

C.R. Beecham,  
SCCA International Secy.

### Readers' letters/articles etc

This Bulletin was instigated to encourage members to express views about their Association and its activities, and all contributions will be welcomed:

Articles - to the Editor  
Games - to the Games Editor  
Letters - to the Editor, the Secretary or any of our Controllers or Executive Committee Members

# CHESS SUPPLIERS (SCOTLAND) LTD.

041-248-2887 (24 hour answerphone)

P.O. BOX 67

1st Floor

15 HOPE St.

GLASGOW G2 6AB

showroom open

Every day 10-30 am to  
5-00pm, excluding  
Sundays and Mondays



THE CHESS SPECIALISTS for individuals,  
clubs, schools and libraries

ORDERS ACCEPTED BY MAIL ORDER

## SCOTTISH CHESS ASSOCIATION, est 1884

FULL DETAILS REGARDING ACTIVITIES AND MEMBERSHIP.....  
FROM S.C.A. SECRETARY.....

Mrs L. Morrison  
44 Stewart Clark Ave.  
South Queensferry  
West Lothian EH30 9QH

## BRITISH POSTAL CHESS FEDERATION....

Details BPCF Secretary.....

M.C. PELTZ  
14 Linden End,  
AYLESBURY,  
Bucks.

# It's unwise to pay too much

but it's unwise  
to pay too little.  
If you deal with  
the lowest bidder,  
it's well to add  
something for  
the risk you run.  
And if you do that,  
you will have  
enough to pay for  
something better.

John Ruskin

**The next move is up to you!**

get full value from

**General  
Accident**

Honestly, it's the best policy.