

Scottish Correspondence Chess Association

Magazine No.165

Spring 2024

ICCF Grading List 2024/2
Alistair analyses the Q2 statistics

Best Game Prize 2023
Valer Eugen Demian gives the results

The Hawkes Files
John features knights in the ascendant

Edinburgh v London
Andre concludes his 200th Anniversary match report

Chess Etchings
A miscellany of engravings and drawings

Domestic Report
Mickey and David keep us up to date

Endgame Compositions
Sergey Tkachenko demonstrates his prowess



NB printed copies no longer available

Two knights back to back, from Skye, mid-13th century
National Museum of Scotland <https://www.nms.ac.uk>



Welcome to the first edition of our 2024 magazine set! As at Christmas, we entertained family and friends over the Easter period, so it's been a bit hectic catching up with the chess workload since then.

The second ICCF rating list of 2024 is analysed by our grader Alistair Maxwell, who reports no new norms, but welcomes two new SCO members following the unfortunate demise of BCCA.

As usual in this edition, we invite a titled player from another ICCF country to judge our Best Games of 2023. This year we welcome IM Valer Eugen Demian of Canada who (unusually) has adjudged 1st place a draw.

Andre Antunes, concludes his report on the re-match of the famous 1824 Edinburgh-London postal match Full results tables are provided and once again Graham Morrison provides some annotated games.

John Hawkes features games where knights play leading roles, and his artwork showcases the Mexican artist Gabriel Orozco (renowned for his Horses Running Endlessly work).

Our Chess Etchings pages celebrate a variety of engravings, etchings and drawings from round the world. Our categorisation might be a little flexible, but the selected images are certainly worth a browse.

Membership Secretary Mickey Blake and International Secretary David Kilgour combine forces to report on the Challengers event and the upcoming Counties & Districts Correspondence Chess Championship 2024.

We welcome back Awanl Kumar who provides us with Knight Tours based on the edition number of this magazine.

Alastair Dawson has been short of time in recent weeks, but has provided us with a selection of lovely miniature games.

Finally, we introduce SergeyTkachenko, a world-class Ukrainian problemist. He really is a talent!

It's a packed edition, so sorry if it's a little late. I do hope you enjoy it!

SCCA Membership

Annual: £10/year buys you entry to all SCCA domestic events and friendly international matches, plus 4 quarterly e-magazines.

Life: £100 gets you annual membership for the rest of your days (plus a year's worth of printed magazines to try out).

Patron: £125 (+ any further donation you care to make) gets you life membership and your name on something commemorative.

SCCA 100 Club

The 100 Club has been and continues to be an important revenue-earner for our Association, with many long-standing subscribers.

However, in recent years we have lost a number of subscribers through death and replacing them has been a challenge that, as yet, we have been unable to fully meet.

Could you help us address our challenge by agreeing to take one, two, three or more units each month?

Responsibility for the 100 Club rests with our Treasurer, Ian Whittaker. Units cost £1 with some members taking one unit while others take as many as 10 units per month. From the Association's perspective paying by Bankers Order is most convenient.

If you don't already subscribe to the 100 club please consider if you can help the SCCA by making contact with Ian to sign up for some units (contact details below).

Recent 100 Club Winners

2024	1st	2nd
March	J S Murray	S G Mackenzie
February	J S Murray	J S Murray
January	A P Borwell	G M Anderson

SCCA Officials

Role	Name	Address	Contact	Email
President	Iain Mackintosh	11 West Grange Farm, St Andrews KY16 8LJ	+44 (0)1334 470287	president@scottishcca.co.uk
International	David Kilgour	Willowbank, Peebles Road, Galashiels, TD1 1TH	+44 (0)1896 755576	international@scottishcca.co.uk
Treasurer	Ian Whittaker	Inchkeith House, Lauder, Berwickshire TD2 6TE	+44 (0)1578 722 670	treasurer@scottishcca.co.uk
Membership	Mickey Blake	Turnpike Cottage, Kennerleigh, Crediton, EX17 4RR	+44 (0)7485 204208	membership@scottishcca.co.uk
Committee	Kevin Paine	47 Park Hill Drive, Frome BA11 2LQ	+44 (0)1373 467585	kevin.paine@scottishcca.co.uk
Committee	Alan Borwell	8 Wheatfield Avenue, Inchtute PH14 9RX	+44 (0)1828 686556	alan.borwell@scottishcca.co.uk
Committee	Graham Morrison	1 Fairhaven Road, Lytham St. Annes FY8 1NN	+44 (0)1253 780090	graham.morrison@scottishcca.co.uk
Grader	Alistair Maxwell	34 Loganswell Gardens, Glasgow G46 8HU	+44(0)141 620 2115	grader@scottishcca.co.uk
Games Editor	Alastair Dawson	10 Berry Place, St Andrews KY16 8RG	+44(0)1334 477236	games@scottishcca.co.uk



**ICCF 48th WCCC Semi-Finals
Announced**



Following the decisions of the ICCF Congress 2011, all Semi-Final Sections of the World Correspondence Chess Championship shall start on the same day and only once per year.

The start date of the Semi-Finals of the 48th WCCC is **June 20, 2024.**

All entries will be accepted according with ICCF Tournament Rules valid as from January 1, 2024, to be received **not later than May 8, 2024.**

Member Federations Nominations (MFN) should also be submitted not later than May 8, 2024.

Semi-Finals Sections normally have 13 players with the possibility for the TTC to extend them to 15 or 17 players if appropriate in special situations.

Players entering more than one section will be accepted only to fill vacancies.

If the number of the entries won't be a multiple of 13, 15 or 17, sections will be fulfilled with the players who ask to enter the Semi-Finals according Rule 1.2.1.2.3; if it would again impossible to fulfill a section, the reserve players and the players who have been entered according to points 1.2.1.2 (i), (j) and (k) and who have the lowest ICCF ELO rating in list 2024/2 won't be admitted to the 2024 Semi-Finals.

Entries have to be sent **through the „New events“ page of www.iccf.com.** The entry fee can be paid via Direct Entry or via the player's National Federation. It is mandatory that the qualification right under ICCF Rule 1.2.1.2 should be specified for each entry.

Players who obtained their qualification in a WCCC Preliminary can enter a section of the Semi-Finals free of charge.

Entries of „reserve players“ (ICCF Rule 1.2.1.2.3) have to be sent **by e-mail** to the TTC **via the player's National Federation.**

Players who are not currently represented by any National Federation can contact the TTC directly.

The ICCF Executive Board asks that all ICCF Delegates ensure that this important information is made available in all national CC magazines and websites. It is the

responsibility of Delegates to ensure that all players are made aware of these arrangements.

Any questions and/or requests for clarification should be directed to the ICCF Title Tournament Commissioner, Gian-Maria Tani, g.m.tani.iccf@gmail.com.

Appendix. Section 1 of ICCF Rules

1.2.1.2 Semi-Finals of the World CC Championship

1. The following will be entitled to enter a WCCC Semi-Final:

(a) the participants in one of the previous or running Finals if they have not earned a higher qualification.

(b) the participants in one of the previous or running Candidates' Tournaments who have scored at least 50% of the possible points if they have not earned a higher qualification.

(c) the participants in one of the previous or running Semi-Finals who finished in place 3 or 4 or scored at least 60% of the possible points but did not qualify for the Candidates' Tournament.

(d) the first and second placed players from a Preliminary section.

(e) the participants in a Final of the ICCF World Cup Tournament who finished in place 3 or 4 or scored at least 60% of the possible points (This does not include the ICCF Veterans World Cup, Chess 960 World Cup or World Team Tournaments).

(f) the participants in one of the previous or running acknowledged Zonal Championships of tournament average rating at 2451 or higher who finished in place 3 or 4 or scored at least 60% of the possible points.

(g) the two top finishers from the acknowledged Zonal Championships of the tournament average rating at 2450 or below.

(h) those players, who, at the time of nomination have ratings of 2400 and higher, are entered through their own national organisation.

(i) the holders of the Correspondence Chess International Master title with fixed ratings above 2500. (*)

(j) the holders of the Correspondence Chess Senior International Master title with fixed ratings above 2450. (*)

(k) the holders of the Grandmaster Title with ratings above 2400. (*)

(l) those players who have a fixed rating above 2550. (*)

(*) *ELO ratings used in these Rules refer to any of those rating lists published in the preceding 12 months.*

Any player with a fixed rating of 2450 or above can ask to enter a WCCC Semi-Final section. The highest rated players will be accepted only to fill a section if the number of the entries will not be a multiple of 13, 15 or 17.

Any queries, please contact David Kilgour at: international@scottishcca.co.uk

Fernschach 2024 CC Database



Herbert Bellmann writes to advise that Fernschach 2024 offers a CC games database in addition to ICCF and commercial products. In summary:

- Database available annually since 2000
- Nearly 1,933,000 games (from 1991)
- Over 95,000 new games since 2023
- Over 10,000 annotated (320 new)
- German letters ä, ö, ü and ß are not counted in names
- Games from all main chess servers + post + email All tournaments marked correspondence so that CC games can be recognised in a larger database

The price is €14.00 (shipping within Germany) and €16 (shipping elsewhere). Email version €12.

For further details, contact Herbert at:

Herbert Bellmann
Auf dem Brink 11
46399 Bocholt
Germany

Bank details: Transfer the purchase amount to:

Bocholt Municipal Savings Bank (Stadtsparkasse
Bocholt)
IBAN DE 33428500350100118801
BIC SWIFT WELADED1BOH
Purpose: FS CD 2023

Your order must provide your complete postal address!

Email: hebel57@gmx.de

<https://www.bdf-fernschachbund.de/news/fernschach-cd-2023-erschienen.html>

ICCF Games Archive Updates



March updates to the Games Archive have now been added. You can now download all annual archives to end-December 2023.

SCCA on Twitter



Mickey Blake sends a reminder that we are now on Twitter at

<https://twitter.com/scotcorrchess>

The account is linked to

membership@scottishcca.co.uk

If you are a Twitter user, feel free to follow us and retweet our news items. We'll retweet news from ICCF to broaden the reach of their tournament announcements etc., and our posts will carry the tag #CorrespondenceChess

Our page looks like this:



If you're a Twitter user, feel free to get in touch!

SCCA on Facebook



Mickey Blake continues as our FB editor.

If you prefer to get your updates from Social Media, then the page to visit is:

<https://www.facebook.com/scottishcca>

You can help Mickey by posting your own comments on the page, and 'Liking' anything which catches your eye!

For reference, ICCF are on Facebook at:

<https://www.facebook.com/groups/168419426514337>



2024/2 Grading List

By Alistair Maxwell

The second ICCF grading list of 2024 is published and new grades are based on 3 months' results reported between 1 Jan and 31 Mar 2024. The grades will apply to internationally graded games starting between 1 Apr and 30 Jun 2024.

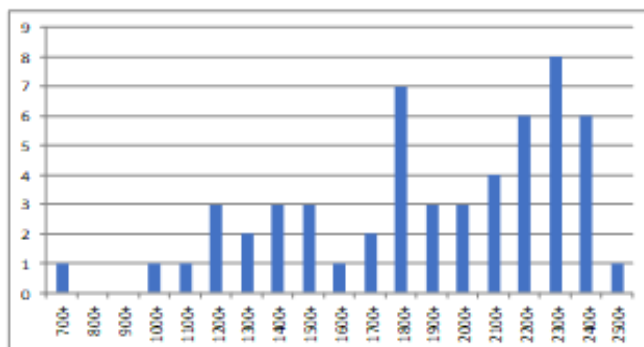
It appears that there were no new norms in the latest rating period.

There were 2 additions to the list, both previously registered under England. This resulted from the demise of BCCA where the admin had been wayward. The players have made the correct decision now!! The most significant rating moves were Ian Marshall (+127), Thomas Anderson (+91), Richard Beecham (+45), Colin Beveridge (+32), and Steve Pettigrew (+23).

New games centurions were Raymond Burrige (2000+) and Robert Montgomery (400) and Gordon Anderson (400+) Highest recorded games this quarter were Martin Hardwick (56), Iain Sneddon (36) and Carlos Almarza Mato (25).

You need to complete 12 ICCF-eligible games to obtain a rating. Fixed ratings are based on at least 30 games and only these are shown below. Rating changes are denoted by arrows. Email grader@scottishhcca.co.uk if you have any queries.

No.	Name	Results	Grade	No.	Name	Results	Grade
317	Almarza Mato, C (CCE)	2542	2116 ↓	584	MacGregor, C A	520	1923 ↓
518	Anderson, G M (CCM, SM)	416	2302 ↑	532	Mackintosh, I (SIM)	863	2410 ↔
	Anderson, T R	72	1792 ↑	216	MacMillen, A N	1518	1655 ↑
	Antunes, A	53	2205 ↑		Major, B	115	1180 ↓
313	Armstrong, J McK	551	1467 ↑	566	Marshall, I H	926	2281 ↑
511	Beecham, C R (SIM)	554	2515 ↑	434	Matheis, T (IM)	321	2450 ↑
599	Bell, A D (IM)	285	2429 ↔		Maxwell, A	75	2060 ↔
501	Bennett, P G (CCM, SM)	513	2378 ↔		Miles, A	106	1231 ↔
481	Beveridge, C (CCM)	837	2336 ↑	598	Montgomery, R S (CCM)	400	2333 ↑
472	Blake, M J (CCM)	975	2386 ↓		Morrison, G J (CCM)	93	2326 ↑
509	Borwell, A P (IM)	1105	2197 ↔		Moss, R	47	1778 ↔
	Bruce, R (CCE)	1122	1877		Munro, P R	101	2156
486	Buchan, A W (CCM)	461	2445 ↓	474	Murden, C (IM)	686	2464 ↑
602	Burrige, R J	2001	1817 ↓	564	Murray, J S	116	1978 ↓
	Carswell, D	53	1584 ↔	603	O'Neill-McAleenan, C	252	1571 ↔
247	Cormack, W H	137	1833 ↓	604	Paine, Prof K A (CCM, SM)	260	2333 ↔
166	Cumming, D R (CCM, SM)	2285	2239 ↓		Pettigrew, S	196	1402 ↑
422	Dawson, Prof A G (CCE)	179	2144 ↔	432	Price, D	534	1983 ↓
478	Dunn, J	552	1261 ↓		Rafferty, F	42	1343 ↔
371	Edney, D	339	1818 ↔		Ross, Derek I	57	1808 ↔
462	Gilbert, R	334	1502 ↓		Sedstrem, A	119	1348 ↔
596	Hardwick, M E	1997	739 ↓	477	Smith, M J (CCE)	134	2239 ↔
548	Kilgour, D A (GM)	379	2287 ↑	439	Sneddon, I (CCM, SM)	797	2417 ↑
260	Knox, A	431	1266 ↔	057	Taylor, A	49	1801 ↔
	Lima, Joao	30	2039 ↔		Taylor, R	82	1425 ↔
264	Lloyd, G (CCM, SM)	1226	2281 ↓		Taylor, W (CCE)	223	2088 ↑
	MacDonald, M	122	1004 ↓	605	Whittaker, I P (CCE)	333	2313 ↓
				480	Wicht, D	82	1890 ↔



Statistical Analysis

Total listed	55
New entrants	2
Deletions (inactive, lapsed or non-members)	0
Grading increases (↑)	16
Grading decreases (↓)	16
Grading static (↔)	21

Top 30 Grades

Beecham, C R (SIM)	2515	Kilgour, D A (GM)	2287
Murden, C (IM)	2464	Lloyd, G (CCM, SM)	2281
Matheis, T (IM)	2450	Marshall, I H	2281
Buchan, A W (CCM)	2445	Cumming, D R (CCM, SM)	2239
Bell, A D (IM)	2429	Smith, M J (CCE)	2205
Sneddon, I (CCM, SM)	2417	Antunes, A	2205
Mackintosh, I (SIM)	2410	Borwell, A P (IM)	2197
Blake, M J (CCM)	2386	Munro, P R	2156
Bennett, P G (CCM, SM)	2378	Dawson, Prof A G (CCE)	2144
Beveridge, C (CCM)	2336	Almarza Mato, C (CCE)	2116
Montgomery, R S (CCM)	2333	Taylor, W (CCE)	2088
Paine, Prof K A (CCM, SM)	2333	Maxwell, A	2060
Morrison, G J (CCM)	2326	Lima, J	2039
Whittaker, I P (CCE)	2313	Price, D	1983
Anderson, G M (CCM, SM)	2302	Murray, J S	1978

Top 10 Rated Games

Almarza-Mato, C (CCE)	2542	Lloyd, G (CCM, SM)	1226
Cumming, D R (CCM, SM)	2285	Bruce, R (CCE)	1122
Burridge, R J	2001	Borwell, A P (IM)	1105
Hardwick, M E	1997	Blake, M J (CCM)	975
MacMillen, A N	1518	Marshall, I H	926

Selected Personal Best Grades 2024/2

	New	Previous		Gain
Beecham, C R (SIM)	2515	2511	2010/3	4
Murden, C (IM)	2464	2462	2024/1	2
Sneddon, I (CCM, SM)	2417	2402	2024/1	15
Beveridge, C (CCM)	2336	2304	2024/1	32
Marshall, I H	2281	2154	2024/1	127
Antunes, A	2205	2199	2024/1	16
Anderson, T R	1792	1777	2023/1	15

Other Notes

Senior International Master (SIM) title norms are held by:
Matheis, T (1), Murden, C (1)

International Master (IM) title norms are held by:
Anderson, G M (1), Bennett, P G (1), Cumming, D R (1),
Sneddon, I (2)

Scottish Master (SM) title norms are held by:
Buchan, A (1), Beveridge, C (1), Morrison, G J (1),
Whittaker, I P (1)

Correspondence Chess Master (CCM) title norms:
Whittaker, I P (1), Taylor, W (1)

Correspondence Chess Expert (CCE) title norms:
Burridge, R J (2).

This list includes a number of our members who are registered with other countries. Members who have played <30 games are not shown.

To check your rating online at any time, go to the ICCF webserver site (www.iccf.com), click on the ICCF Ratings link then complete the search boxes.

A number of useful online rating enquiry facilities are available, including a personal forecasted rating as your results come in.



11th Annual SCCA Best Game Prize

By IM Valer Eugen Demian

[Ed –this year we invited IM Valer Eugen Demian of Canada to judge our competition. He also holds the ICCF IA title plus Silver and Gold von Massow medals for his ICCF voluntary work.

He's a FIDE FM too, and was awarded the title of FIDE Instructor for his development of Canadian children at national and international level.

Currently he's vice-president of the Canadian CCA, and working with the board to revitalize the association internally and externally.

Professionally, Valer is an engineer working for an international water slides company with headquarters in Vancouver.

Twelve entries were submitted this year, so Valer Eugen had a sizeable workload to handle.

It was a pleasure to welcome him to Glasgow in 2023 for the ICCF Congress, and I much appreciate his excellent analysis and decision-making here - many thanks!]

Valer Eugen Demian: Reflections from a Best Game judge.

I received the 12 games that were submitted - this shows a lot of interest from the membership, a refreshingly positive aspect.

My approach was to look over all the games a couple of times to get a feeling for them. By doing that I was able to separate the games into four main categories.

1. Opening Blunders
2. Blocked Pieces
3. Storming the Castle
4. Positional Battles
5. Other

Later, I looked at them in greater detail to be able to appreciate the effort put into them by the players. In the end I included 10 games in categories 1-4.

SCCA Magazine 165

The remaining two games didn't fit the main categories, but were not as good quality as the rest.

Third Place

White: Buchan, Allan (2372)
Ackley, Peter (2133)
Queen's Indian [E15]
SCCA/L1/2023
[Notes by Allan Buchan]

1.d4	Nf6
2.c4	e6
3.Nf3	b6
4.g3	Ba6
5.b3	Bb4+
6.Bd2	Be7
7.Bg2	c6
8.Bc3	d5
9.Nbd2	Nbd7
10.Qc2	c5
11.dxc5	bxc5
12.cxd5	exd5
13.0-0	0-0
14.Rfe1	Re8
15.Rad1	Bb7
16.Bxf6	Nxf6
17.e4	d4
18.h4	Rb8
19.Qd3	Qc7



20.Rc1N
20.e5 was played once before.
20... Bc6?
20...Qb6 was better.
21.e5 Nd5
22.e6
The e pawn is now being a nuisance.
22... f6
23.a3 Nc3

24.h5
If in doubt, push the 'h' pawn!
24... Qb7?
24..Rbd8 was stronger.
25.Bh3 Bxf3?!
This trade benefits white. Better was 25..Bb5. Black's in trouble now.
26.Nxf3 Kh8
27.Bf5 Qb5
28.Bxh7 Qxd3
29.Bxd3 Rxb3
30.Nh4 Rb7
31.Kg2 Kg8
32.h6 gxf6
33.Nf5 Bf8
34.Bc4 Kh8
35.Rh1 Rh7
36.Rce1 a6
37.e7 Rhxe7

38.Rxe7
Black resigns. White's position is too strong. After the exchange of pieces, either the a or h pawn will fall and Black's remaining pieces aren't best placed to defend the remaining pawns.

1-0



First Equal Place

White: Montgomery, Robert S. (2287)
Black: Beveridge, Colin (2237)
Symmetrical English [A34]
SCO/C2022-23
[Notes by Robert Montgomery]

1.Nf3	c5
2.c4	Nc6
3.e3	Nf6
4.Nc3	e5
5.d4	e4
6.d5	exf3
7.dxc6	dx6
8.Qxd8+	Kxd8
9.gxf3	



I was a bit surprised to enter this line as the theoretical assessment is better for White. At first glance this assessment may seem surprising: Black has two pawn islands against three for White and Black's king would appear to have a safe haven on c7. In other openings like the KID exchange variation and certain lines of the Phildor, Black is happy to have the king posted here and can have an equal game with counterplay. However, White's advantage is based on several factors. 1. White has the only central pawn; 2. the doubled f-pawns support the e-pawn; 3. The half-open g-file can be utilised by White's rook; 4. The doubled c-pawns can become a liability restricting Black's development.

- | | |
|-----------|-------|
| 9... | g6 |
| 10.b3 | Bg7 |
| 11.Bb2 | b6 |
| 12.0-0-0+ | |
| 12... | Kc7 |
| 13.h4 | h5 |
| 14.Ne4 | Ne8 |
| 15.Bd3 | Bxb2+ |
| 16.Kxb2 | Ng7 |
| 17.Ng5 | Be6 |
| 18.Rd2 | Rhd8 |
| 19.Kc3 | Rd7 |
| 20.Be4 | Rxd2 |
| 21.Kxd2 | Rf8 |
| 22.Bd3 | Bf5 |
| 23.e4 | Bc8 |
| 24.Rg1 | Kd6 |
| 25.f4 | Ke7 |
| 26.Nf3 | Ne6 |
| 27.Ke3 | Rd8 |
| 28.f5 | gxf5 |
| 29.exf5 | Nd4 |
| 30.Nxd4 | cxd4+ |
| 31.Kf4 | Kf6 |

- | | |
|--------|-----|
| 32.b4 | Rh8 |
| 33.c5 | Rd8 |
| 34.a3 | Bd7 |
| 35.Rg5 | Rh8 |
| 36.Bc4 | Bc8 |
| 37.f3 | Bd7 |

White has pressed Black's position to create weaknesses. I have exchanged pieces but only under my terms. White clearly has the better pieces. White keeps pressure on the h-pawn and also looks to create another weakness on the queenside which will decide the game.

- | | |
|---------|------|
| 38.Bd3 | bxg5 |
| 39.bxc5 | Bc8 |
| 40.Ke4 | Rd8 |
| 41.Rxh5 | Kg7 |
| 42.Rg5+ | Kf6 |
| 43.Kf4 | |



[43.f4??
White has to be careful as this natural looking move to protecting the rook and allowing White to play h5 in response to 43... Rh8 would not only throw away the win but loses the game after 43...Rd5 44.Kf3 Rxc5 45.h5 Rc3 and if 46.Ke4 c5 threatening Bb7#]

- | | |
|----------|------|
| 43... | Rh8 |
| 44.h5 | Bd7 |
| 45.Kg4 | Ke7 |
| 46.Kh4 | f6 |
| 47.Rg7+ | |
| 47... | Kd8 |
| 48.Rg4 | Be8 |
| 49.Rxd4+ | Ke7 |
| 50.Kg3 | Rxh5 |
| 51.Ra4 | Rh1 |
| 52.Rxa7+ | Bd7 |
| 53.Kf2 | Rc1 |
| 54.Ra5 | Kd8 |

- | | |
|---------|------|
| 55.Ke2 | Rh1 |
| 56.Be4 | Bc8 |
| 57.Bxc6 | Bxf5 |
| 58.Bd5 | Bc8 |
| 59.Be4 | |

1-0



First Equal Place The R.J. Burrige Trophy 2022-23

White: Buchan, Allan (2365) -
Jenkinson, Simon W. (2365)
Queen's Gambit, Cambridge
Springs Variation [D52]
EFCC 60 GOLD (ENG)
[Notes by Allan Buchan]

- | | |
|-------|------|
| 1.d4 | Nf6 |
| 2.c4 | e6 |
| 3.Nf3 | d5 |
| 4.Nc3 | c6 |
| 5.Bg5 | Nbd7 |

I was happy to see this move. It's a little more ambitious than the most popular lines.

- | | |
|---------|------|
| 6.e3 | Qa5 |
| 7.cxd5 | Nxd5 |
| 8.Rc1 | Nxc3 |
| 9.bxc3 | Ba3 |
| 10.Rc2 | b6 |
| 11.Be2 | Ba6 |
| 12.0-0 | Bxc2 |
| 13.Rxe2 | b5 |
| 14.e4 | 0-0 |
| 15.e5N | |

My opponent had played this line twice as white, both draws, but on both occasions he chose to defend the c pawn with 15.Re3



15... Rfe8?!

Not sure what purpose this served. A more aggressive move is probably needed here.

16.Re3 Qa4

17.Qd2 Nb6?!

I'd expected 17..Bf8, perhaps, now that the rook was out of the way. The Black kingside is starting to look a little vulnerable.

18.Re4 Nd5

19.Rg4 Be7

20.Bxe7 Nxe7

21.h4

When in doubt as to how to attack, push the h pawn!

21... Nf5

22.h5

And again.

22... h6

23.Rf4

Paving the way for the g pawn.

23... Qa3

24.g4 Ne7

25.g5 Nd5

26.Rg4 Kh7

27.Rb1



Black resigns. Possibly a little prematurely. Pushing the c pawn could have created some counterplay.

1-0



Allan Buchan



Protecting the c pawn. White's position is looking quite dominant now.

27... a5

28.Rb3 Qe7

29.Nh4 a4

30.Rb1 Rg8

31.Qd3+ Kh8

32.Kh2 Qa3

33.Rbg1 Qxc3

34.Qd1 Raf8

35.R1g3 Qb2

36.Rf3



The R.J. Burridge Trophy

Winners

2013 Richard Beecham

2014 Charles O'Neill-McAleenan

2015 Peter Bennett

2016 Kevin Paine

2017 Tom Matheis

2018 Peter Bennett

2019 Iain Mackintosh

2020 Iain Mackintosh

2021 Allan Buchan

2022 Iain Mackintosh

2023 1=Robert Montgomery

1=Allan Buchan



Robert Montgomery





Edinburgh vs London Correspondence Chess (CC) Match 2022/23 Part 2



By Andre Antunes

Edin v Lon, Edinburgh v London 2022

Edinburgh Antunes, Andre		TD Burrige, Raymond John				London Beckett, Phillip J.	
		White	Black	White	Black		
Board 1	♣ Berry, Neil	½	½	½	½	♣ SIM Frostick, Clive A.	2501
Board 2	♣ Morrison, Graham James 2307	½	½	½	½	♣ IM Wharrier, Jo A.	2435
Board 3	♣ Morrison, Graham James 2307	½	½	½	½	♣ SIM Rhodes, John D.	2415
Board 4	♣ Morrison, Graham James 2307	½	½	½	½	♣ GM Brookes, John G.	2408
Board 5	♣ Wallden, Petros	½	½	½	½	♣ IM Maguire, Gary	2410
Board 6	♣ Gordon, Frederick	0	0	1	1	♣ SIM Asquith, Jerry E. C.	2385
Board 7	♣ CCM Bennett, Peter G. 2377	½	½	½	½	♣ CCE Lyne, Colin J.	2331
Board 8	♣ CCM Bennett, Peter G. 2377	½	½	½	½	♣ CCE Spanton, Tim	2280
Board 9	♣ CCM Buchan, Allan 2369	½	½	½	½	♣ Williams, Stephen M.	2277
Board 10	♣ CCM Buchan, Allan 2369	½	½	½	½	♣ CCM Hart, Terry	2256
Board 11	♣ CCM Buchan, Allan 2369	½	½	½	½	♣ CCE Marchant, Arnold	2253
Board 12	🇮🇷 SIM Harding, Timothy David 2353	½	½	½	½	♣ CCE Hamilton, David	2230
Board 13	♣ CCE Montgomery, Robert S. 2288	½	½	½	½	♣ Davey, Adrian	2223
Board 14	♣ CCE Montgomery, Robert S. 2288	½	½	½	½	♣ SIM Vivante-Sowter, John	2184
Board 15	♣ CCE Montgomery, Robert S. 2288	1	½	½	0	♣ CCE Sutton, Alan B.	2172
Board 16	♣ CCE Montgomery, Robert S. 2288	½	½	½	½	♣ Cunningham, Peter J.	2165
Board 17	♣ IM Borwell, Alan P. 2207	1	½	½	0	♣ Cooper, J. G.	2135
Board 18	♣ CCE Whittaker, Ian P. 2237	1	1	0	0	♣ Beckett, Phillip J.	1863
Board 19	♣ CCE Whittaker, Ian P. 2237	½	½	½	½	♣ Craven, Valerie	2073
Board 20	♣ CCE Whittaker, Ian P. 2237	1	½	½	0	♣ Primrose, Jo	1977
Board 21	♣ White, Alastair	1	1	0	0	♣ Illingworth, J. B.	1958
Board 22	♣ Bhopal, Raj	½	½	½	½	♣ Hooker, Stephen	
Board 23	♣ Antunes, Andre	½	½	½	½	♣ Wood, Ben A.	1869
Board 24	♣ Antunes, Andre	1	1	0	0	♣ Elwood, David	1894
Board 25	♣ Antunes, Andre	1	1	0	0	♣ Riddle, Bruce	1731
Board 26	♣ Antunes, Andre	1	1	0	0	♣ Spencer, Adam	1688
Board 27	♣ Smith, Mark J. 2179	1	1	0	0	♣ Kok, Herman	1686
Board 28	♣ Sykes, Chris	1	1	0	0	♣ Robinson, Robin	1678
Board 29	♣ Antunes, Andre 1880 ^S	1	1	0	0	♣ Foreman, Anthony	1631
Board 30	♣ Zamvar, Vipin	0	1	0	1	♣ Page, Martin	1635
Board 31	♣ Zamvar, Vipin	1	1	0	0	♣ White, Richard	1632
Board 32	♣ Zamvar, Vipin	1	1	0	0	♣ Hutchings, J. M.	1606
Board 33	♣ Patras, Paul	0 ^E	0 ^E	1 ^E	1 ^E	♣ Toon, James	
Board 34	♣ Waines, Calum	1	1	0	0	♣ Ward, Bill	1542
Board 35	🇳🇱 Bulthuis, Hindrik Freerk	1	0 ^E	1 ^E	0	♣ Brooks, Ian	1559
Board 36	🇳🇱 Bulthuis, Hindrik Freerk	1	1	0	0	♣ Ruffle, Alan	1494
Board 37	♣ Addison, James	1	1	0	0	♣ Evans, Joyce	1480
Board 38	♣ Korakakis, Emmanouil	1	1	0	0	♣ Bishop, Edward	1346
Board 39	♣ Korakakis, Emmanouil	1	1	0	0	♣ Beckett, Phillip J.	1863
Board 40	♣ McKinnon, Scott	0 ^E	0 ^E	1 ^E	1 ^E	♣ Lohia, Sohum	
Board 41	♣ Kenny, Stuart	1	1	0	0	♣ Watson, Francis	
Board 42	♣ Clarke, Thomas	½	0 ^E	1 ^E	½	♣ Toon, James	
Total:		56		28			



Graham Morrison joined our Executive Committee last May. Here he completes his games in the Edinburgh-London match.

White: Morrison, Graham (2307)
Black: Rhodes, John D. (2415)
D38 QGD Ragozin Defence
Edinburgh v London 2022
[Notes by Graham Morrison]

- 1.d4 Nf6
- 2.c4 e6
- 3.Nf3 d5
- 4.Nc3 Bb4
- 5.Bg5 h6
- 6.Bxf6 Qxf6
- 7.e3 0-0
- 8.Rc1 dxc4
- 9.Bxc4 c5
- 10.0-0 cxd4
- 11.Ne4 Qe7
- 12.a3 Ba5
- 13.Qxd4 Rd8
- 14.Qe5 Bb6
- 15.Rfd1 Bd7

I have had this position before:
 15...Nc6 16.Qh5 Bd7 17.g4 Na5
 18.Rxd7?! Rxd7 19.Ba2 Rc7
 20.Rxc7 Qxc7?! (20...Bxc7?) 21.g5
 Nc4 22.Bxc4 Qxc4 23.Ne5 Qxe4
 24.Qxf7+ Kh8 25.Qxe6 Qb1+
 26.Kg2 Bxe3 27.g6 Qe4+ 28.f3??
 (28.Kf1=; 28.Kh3=) 28...Qc2+--
 29.Kg3 Bf2+ 30.Kf4 Qc1+ 31.Ke4
 Qe3+ 32.Kf5 Rf8+ 33.Nf7+ Kg8 0-1
 (33) Morrison, G (2278)-Sadler, M
 (2687) England 2018.

- 16.Qd6 Kf8
- 17.Qf4 Nc6
- 18.g4 g5!

And that closes off the kingside play for White! Nothing to play for now.

- 19.Qf6 Qxf6
- 20.Nxf6 Nb8
- 21.Ne5 Ke7
- 22.Nfxd7 Nxd7
- 23.Nxd7 Rxd7
- 24.Rxd7+ Kxd7
- 25.Be2 Rh8
- 26.Kg2 Ke7
- 27.Rc2 Rd8
- 28.b4 Rd7
- 29.Bf3 Kf6
- 30.a4 Bd8
- 31.Rc8 b5
- 32.Bc6 Rc7
- 33.Rxc7

1/2-1/2



White: Rhodes, John D. (2415)
Black: Morrison, Graham (2307)
B48 Sicilian Taimonov
Edinburgh v London 2022
[Notes by Graham Morrison]

- 1.e4 c5
 - 2.Nc3 Nc6
 - 3.Nf3 e6
 - 4.d4 cxd4
 - 5.Nxd4 Qc7
 - 6.Be3 a6
 - 7.Qf3!?
- The trendy line!
- 7... Nf6
 - 8.0-0 Ne5
 - 9.Qg3 b5
 - 10.f4 Neg4
 - 11.Bg1 h5
 - 12.e5 b4
 - 13.Na4 Nd5
 - 14.h3 Nh6
 - 15.f5 Bb7
 - 16.Bd3 Be7
 - 17.Kb1 h4
 - 18.Qe1 Nf4
 - 19.Be4 Nxcg2

However the book "The Sicilian Taimanov" by Pavlidis recommends 20.Qe2! Nf4 21.Qf3 Bxe4 22.Qxe4 Nd5 and looks further at 23.Qg2, 23.Bf2 and 23.f6. This certainly looks more dangerous.

- 20... Bxg2
- 21.Rh2 Bd5
- 22.Rhd2 Rc8
- 23.Ka1 Qa5
- 24.b3 f6
- 25.fxe6 dxe6
- 26.exf6 Bxf6
- 27.Kb1 0-0
- 28.Nxe6 Bxe6
- 29.Qxe6+ Kh7

Pavlidis concludes here that Black is fine. The rest of this game confirms this.

- 30.Nb6 Rfe8
- 31.Qd5 Qxd5
- 32.Nxd5 Bc3
- 33.Rd3 Re2
- 34.Nxc3 Rxc3
- 35.Rxc3 bxc3
- 36.a4 g5



Now a straight race!

- 37.b4 g4
- 38.b5 axb5
- 39.axb5 Re5
- 40.b6 gxh3
- 41.Rd7+ Kg6
- 42.b7 Rb5+
- 43.Ka2 Nf5!

Making it difficult for the bishop to participate from h2.

- 44.Ka3 Rb1
- 45.Bh2 Ng3
- 46.Rc7 Nf1!
- 47.Rc6+ Kh5
- 48.b8Q Rxb8
- 49.Bxb8 Ng3!

Now the bishop is locked out!

- 50.Rc5+ Kg4
- 51.Rc4+ Kh5
- 52.Rc5+ Kg4
- 53.Rc4+

1/2-1/2



White: Morrison, Graham (2307)
Black: Brookes, John G. (2408)
E15 Queen's Indian
Edinburgh v London 2022
[Notes by Graham Morrison]

- 1.d4 Nf6
- 2.c4 e6
- 3.Nf3 b6
- 4.g3 Ba6
- 5.b3 Bb4+
- 6.Bd2 Be7
- 7.Bg2 c6
- 8.0-0 d5
- 9.Qc2
- [9.Bc3!?!]
- 9... Nbd7
- 10.Rd1 0-0
- 11.a4 c5
- 12.Na3 Bb7
- 13.Qb2 Ne4

14.Be1 Bf6
 15.e3
 15.Rac1!?
 15... a6
 16.Ne5
 16.Rac1!?
 16... Qc7
 17.cxd5 exd5
 18.Nd3 cxd4
 19.exd4 Rfe8
 20.Nc2 g6
 21.Rac1 Bg7
 22.Nf4 Qd8
 23.Nb4 Bh6
 24.Nbxd5



Sacrificing the exchange, which I saw I would get back after a few moves. [Also 24.Nbd3 with the tiniest of edges.]

24... Bxd5
 25.Nxd5 Bxc1
 26.Rxc1 Rc8
 27.Rxc8 Qxc8
 28.Bb4 Qd8
 29.Qc2 Ndf6
 30.Nc7

Just so, but...

30... Qc8!
 31.Bh3 Qxh3!
 32.Nxe8 Ng4!
 33.f3 Ne3!

With a nice perpetual check...

34.Qe2 Nxc3
 35.hxc3
 35.hxc3 Qxc3+ 36.Kh1 Qh3+
 37.Kg1=
 1/2-1/2



White: Brookes, John G. (2408)
Black: Morrison, Graham (2307)
B90 Sicilian Najdorf
 Edinburgh v London 2022
[Notes by Graham Morrison]

1.e4 c5
 2.Nf3 d6
 3.d4 cxd4
 4.Nxd4 Nf6
 5.Nc3 a6
 6.Be3 e5
 7.Nb3 Be6
 8.f3 h5
 9.Nd5 Bxd5
 10.exd5 Nbd7
 11.Qd2 g6
 12.Be2

A trendy line, recommended by John Shaw in his book. Sharper is 12.0-0-0!

12... Bg7
 13.0-0 b6
 14.c4 0-0
 15.Rae1 Re8
 16.Kh1 Rc8
 17.Na1!?
 Coming to b4 (or d4)
 17... e4!
 18.Nc2 b5!
 19.Nd4 exf3
 20.gxf3 Rxe3!
 21.Qxe3 bxc4



Black has good play for the exchange.

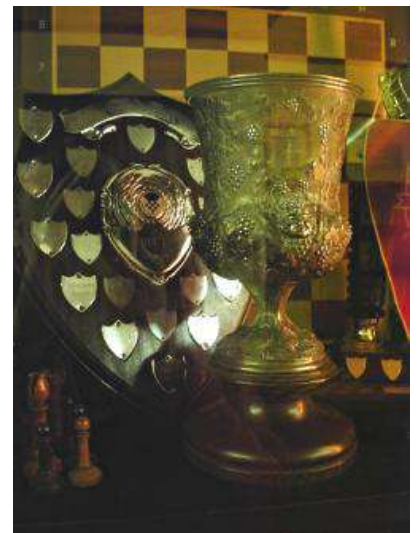
22.Qd2 Rc5
 23.f4 Nxd5
 24.f5 g5
 25.Ne6 Rxc6
 26.Qxd5 Rc5
 27.Qxd6 Be5
 28.Qxa6 Nf6

29.Bxc4 Rxc4!
 30.Qxc4
 And now great play for 2 exchanges!
 30... Qa8+
 31.Kg1 Qa7+
 32.Kg2 Qb7+
 33.Kg1
 So, a draw by repetition. White worried about the consequences of 33.Kf2 Ng4+ 34.Ke2 Qxb2+ 35.Kd3 Bf6 36.h4 gxh4 37.Re8+ Kg7 38.Rg1 Qa3+ 39.Ke2 Qb2+
 1/2-1/2



NB. The game separators are from the Edinburgh Upright Vintage chess set.

NB. The game separators are from the Edinburgh Upright Vintage chess set.



The 1824 Scot's/Scotch Gambit Cup – still on display in the Edinburgh Club Rooms.



The Hawkes Files

By John E. Hawkes

Introduction



Gabriel Orozco
Horses Running Endlessly, 1995

This springtime magazine contribution features some more games in which Knights play leading roles.

There are games by two very important chess-magazine editors: Brian Reilly (BCM) and George Perrine (Chess Review).

The inclusion of photo colourisations is a new development that is thanks to the computer skills of Nina Dmitriieva, a Ukrainian refugee currently living in France.



White: Benko, Pavel P.
Black: Sorokin, Nikolay T.
Two Knights Defence [C56]
Correspondence, 1916
[Notes by John E Hawkes]

- | | |
|--------|------|
| 1.e4 | e5 |
| 2.Nf3 | Nc6 |
| 3.Bc4 | Nf6 |
| 4.d4 | exd4 |
| 5.e5 | d5 |
| 6.Bb5 | Ne4 |
| 7.Nxd4 | Bd7 |
| 8.Nb3 | Qe7 |

- | | |
|--------------|-------------------------|
| 9.Qxd5 | Nxe5 |
| 10.Qxb7?? | |
| 10.Qxe4 Bxb5 | 11.Bf4 avoids disaster. |
| 10... | Nf3+! |
| 11.Kf1 | Ng3+ |



And Qe1 mate next move.
0-1



Sorokin in Georgia.
Colourisation by Nina Dmitriieva



Pyotr Atyashev of Baku (1918-84) won the 2nd USSR CC Championship 1952-55 without losing a single game (13/16 points) just half a point ahead of Pyotr Dubinin.

White: Shumakher, Abram
Black: Atyashev Pyotr
Ruy Lopez Closed [C98]
2nd USSR Corres Ch. 1952-55
[Notes by John E Hawkes]

- | | |
|-------|-----|
| 1.e4 | e5 |
| 2.Nf3 | Nc6 |
| 3.Bb5 | a6 |
| 4.Ba4 | Nf6 |
| 5.0-0 | Be7 |
| 6.Re1 | |

Zaitsev V. against Atyashev in the same event went: 6.d4 0-0 7.d5 Na5 8.Nxe5 b5 9.Qe1 c5 10.Bd2 Nb7 11.Bb3 c4 12.Nxc4 bxc4 13.Bxc4 Re8 14.e5? Bc5 15.Kh1 Nd6! 16.Bb3 (Better was 16.Ba5) 16...Ng4 17.f4 Ne4! and White resigned. If 18.Qxe4 Qh4 19.h3 Qg3! 20.hxg4 Qh4#

- | | |
|---------|-----|
| 6... | b5 |
| 7.Bb3 | 0-0 |
| 8.c3 | d6 |
| 9.h3 | Na5 |
| 10.Bc2 | c5 |
| 11.d4 | Qc7 |
| 12.Nbd2 | Bb7 |
| 13.d5 | Be8 |
| 14.Nf1 | Re8 |
| 15.g4 | g6 |
| 16.Ng3 | |



- | | |
|----------|-----------|
| 16... | h5 |
| 17.gxh5 | Bxh3 |
| 18.hxg6 | fxg6 |
| 19.Ng5 | Qd7 |
| 20.Qf3 | Bg4 |
| 21.Qg2 | Nh5 |
| 21...Bd8 | 22.f3 Bh5 |
| 23.Ne6 | Kh8 |
| 24.Bg5± | |
| 22.Nxh5 | |

Two other knight moves were candidates viz: 22.Nf5 gxf5 (22...Bxg5 23.Qxg4 gxf5 24.exf5±; 22...Nf6 23.Nh6+! Kh8 24.Nxg4 Qxg4 25.Ne6±) 23.exf5 Bxf5! braving a discovered check - and very complicated e.g. 24.Ne6+ Kh8□ 25.Bxf5 Rg8! 26.Ng7 Qd8 27.Qh3 Qe8!; and 22.Ne6 Kh7 23.Bd1 Bxe6 (23...Bxd1 24.Qh3!) 24.dxe6 Qxe6 25.Qh2 Rh8 26.a4±

22... Bxg5
23.Bxg5 gxh5
 23...Bxh5 24.b3 Rf8 25.Re3 Rf7=

24.f3 Qg7
 24...Bh3 25.Qg3 Qg7 26.Qxh3 Qxg5+ 27.Kf2 Kf8 28.Rg1±

25.fxg4 Qxg5
26.gxh5 Qxg2+
27.Kxg2 Kh7



28.Re2
 □28.a4 and if 28...Kh6 29.Bd1

28... Rg8+
29.Kh1 Rg5
30.Rf1
 30.Rh2 was the logical follow-up to 28.Re2

30... Rxh5+
31.Kg1 Rg8+
32.Kf2 Rf8+
33.Ke1 Rxf1+
34.Kxf1 Rh1+
35.Kg2
 35.Kf2 Nc4 36.b3? Na3!†

35... Ra1
36.a3 Rc1
37.Kf2 Kg6
38.Kf3 Kf6
39.Kf2 Kg5
40.Kf3



40... Nc4
 After 30 moves waiting patiently on the rim!

41.Bd3 Nxb2!
 White resigned.

41...Nxb2 42.Rxb2 Rxc3 43.Ke2 Rxa3 44.Bxb5 axb5 45.Rxb5 Kf4 46.Rb6 Kxe4 47.Rxd6 Ra2+ 48.Kd1 Kd3 and White will be mated.

0-1



White: Craig, Tom J
Black: Dempster, David H
King's Gambit Accepted [C34]
 SCCA Championship 1984–85
[Notes by John E Hawkes]

1.e4 e5
2.f4 exf4
3.Nf3 d6
4.d4 g5
5.h4 g4
6.Ng1



6... Bh6
 Anna Sukhinina USSR v Mary Inglis-Hay SCO, Board 1 in the 4th

ICCF Ladies Olympiad Semi-final is an example of the variation 6...f3!? It went; 7.Bg5 f2+ 8.Kxf2 Be7 9.Qd2 Bxg5 10.hxg5 h5 11.Nc3 Nd7 12.Bd3 Nf8 13.Re1 Ne6 14.e5 d5? (14...Kf8 and if 15.g6 dxe5 16.dxe5 fxc6 followed by Kg7. NB 17.Bxg6??) 15.Nge2 Nxg5 16.Nxd5! Nh3+ 17.gxh3 Qxd5 18.Qe3 Ne7 19.Nc3 Qa5 20.Ne4 Nd5 21.Qg5 Qb6 22.Qg7 Qxd4+ 23.Kf1 Rf8 24.Nf6+ Ke7 25.Re4 Qc5 26.b4! Qc6 27.Qg5 Nxf6 28.exf6+ Kd8 29.Bb5 Qd6 30.Ke2! Black resigns.]

7.Nc3 c6
 Hebden - Toothill in the First BPCF Grand Open Final in the early 1980s went; 7...Nf6 8.Nge2 d5 9.e5 Nh5 10.g3 Nc6 11.Bg2 Ne7 12.Bxf4 Bxf4 13.gxf4 Bf5 14.Qd2 c6 15.0–0–0 Bg6 16.Rdgl Ng7 17.h5! Bxh5 18.Bf1 Qd7 19.Nd1 Ng8? 20.f5 and Black resigned. If 20...Qxf5 21.Ng3 Qg6 22.Bd3 winning a piece.

8.Nge2 Qf6
9.g3 f3
10.Nf4 Ne7?
 10...Nd7 was a better option.

11.e5!
 Hebden - Gillam, Edinburgh Open 1982, had gone; 11.Be3 Bxf4 12.Bxf4 0–0 13.Qd2 Re8 14.0–0–0 h5 15.Bg5

11... dxe5
12.Ne4 Qg7



13.Nh5 Qg6
 13...Qf8 14.dxe5 Nf5 (14...Nd5 15.Nd6+ Ke7 16.Nxc8+ Qxc8 17.Bxh6+–) 15.Nhf6+ Ke7 16.Nd6± Qd8 17.Nxf5+ Bxf5 18.Qxd8+ Rxd8 19.Bxh6+–

14.Nhf6+ Kf8
 If 14...Kd8 then 15.dxe5+ Nd7 16.h5 Qg7 17.Bxh6 Qxh6 18.Nxg4±

15.h5! Qg7
 If 15...f2+ 16.Ke2! avoiding Qf5+

16.dxe5 Nd7
17.Qd6! Bxc1

18.Rxc1 Qh6
 19.Nxd7+ Kg7
 20.Qf6+! Qxf6
 21.exf6+

The final variations go: 21.exf6+ Kg8 (21...Kh6 22.Ne5! Be6 23.Nd6 Kg5 24.fxe7+-) 22.fxe7 Bxd7 23.h6! f5 (23...b5 24.Nf6#) 24.Bc4+ and mate next move.

1-0



White Reilly, Brian
 Black: Gibaud, Amadée
 Colle System [D05]

French Correspondence 1933-34
 [Notes by John E Hawkes after
 British Chess Magazine]

1.d4 Nf6
 2.Nf3 e6
 3.e3 b6
 4.Bd3 Bb7
 5.Nbd2 c5
 6.0-0 Nc6
 7.c3 cxd4
 8.exd4



8... Qc7
 9.Re1 Be7
 10.Qe2 Nd5
 11.Nc4 f6
 12.Be4 Nd8
 13.Bxd5 Bxd5
 14.Ne3 Bb7
 15.Nf5 Bf8
 16.c4 g6
 17.Ng3 Bg7

Or 17...Rc8 and options with the KB
 e.g. 18.b3 Bb4! 19.Bd2 Bxf3 20.gxf3
 Bxd2 21.Qxd2 0-0 22.d5 Nf7!

23.dxe6 Ng5 24.Kg2 (24.Qd5
 dxe6+) 24...Nxe6=
 18.b3 0-0
 19.Ba3 Rf7
 20.Rad1 d5



21.h4! Bh6
 21...Qf4 22.Bc1 Qg4=
 22.h5 g5
 23.Nh2 f5
 24.Nf3 f4
 25.Nf1 Rf5
 25...g4 26.Ne5 f3 was an interesting
 alternative.
 26.N1h2 Bg7
 27.Ng4 Qf7
 27...dxc4 28.bxc4 Ra5 may have
 been considered by Gibaud, but his
 text choice allows White to build up
 to an astonishing 30th move.
 28.Nfe5! Qe8
 29.h6 Bf8



30.Qc2!! Kh8
 And if 30...Bxa3 then comes
 31.Qxf5! exf5 32.Nf6+ Kf8
 33.Nxh7+! (Not 33.Nxe8? Kxe8
 when White has no interesting
 discovered check!) 33...Ke7
 (33...Kg8 34.Nf6+ Kf8 35.h7! Nf7
 36.Nxe8 Kxe8 37.Ng6+! Kd8 38.c5!
 bxc5 39.Re7 game over.) 34.Nc6+!
 Kd6 35.Rxe8 Bxc6 36.Rg8+-; After
 30...Be7 Gibaud feared 31.Nd7

giving it !! And indeed, the following
 variation has White with a clear win
 after; 31...Qxd7 32.Bxe7 Qxe7
 33.Qxf5 exf5 34.Rxe7 fxg4 35.Rde1
 dxc4 36.Re8+ Kf7 37.R1e7+ Kg6
 38.Rxb7 Nxb7 39.Rxa8+-
 31.Qxf5! exf5
 32.Nf6 Qe6



33.Bxf8!! Qxf6
 If 33...Qg8 there's the beautiful mate
 in four moves 34.Ng6+! hxg6
 (34...Qxg6 35.Re8! Qxe8 36.Bg7#)
 35.Bg7+ Qxg7 36.Re8+ Qf8
 37.Rxf8#
 34.Bg7+ Qxg7
 35.hxg7+ Kxg7
 Numerically equal but positionally
 lost for Black.
 36.Nd7 Kf7
 37.Re5 dxc4
 38.bxc4 Nc6
 39.Rd5
 Or 39.Rxf5+
 39... Re8
 40.Rd6 Na5
 41.Ne5+ Kg8
 42.Rd7 g4
 43.Rc1 f3
 44.c5

This long-awaited pawn-advance
 brings resignation. Game source:
<https://britishchessnews.com/2020/12/29/remembering-Brian-Patrick-bcm-Reilly-12-xii-1901-29-xii-1991/>
 Amadee Gibaud won the
 French Correspondence
 Championship three times: 1929,
 1931 and 1932.]

1-0





Colourisation by Nina Dmitriieva
Brian Reilly (left) playing Dr. Josep Vallve probably at Barcelona Chess Club in June 1935.



Horses Running Endlessly by Gabriel Orozco



Black Kites by Gabriel Orozco



Miniature Correspondence Masterpieces No. 32



White: Gonzalez, L
Black: Perrine, George H.
Nimzo-Indian Milner-Barry
Variation [E33]
 USA Correspondence USA, 1943
[Notes by John E Hawkes]

1.d4 Nf6
2.c4 e6
3.Nc3 Bb4
4.Qc2 Nc6
5.Nf3 d6
6.Bg5 0-0
 6...h6 7.Bh4 g5 8.Bg3 g4 9.Nh4
 Nxd4 10.Qd3 e5 11.0-0-0 Ne6 and
 Black won in Max Euwe - Hugh
 Alexander, Netherlands v GB, The
 Hague 1939.
7.e4 e5
8.d5 Nd4
9.Qd3 h6
10.Bh4
 10.Bd2 was better.
10... g5
11.Bg3



11... Nxe4!
12.Nxd4 exd4
13.Qxd4 Re8

14.0-0 Nxc3
15.bxc3 Ba3+
16.Kc2
 If 16.Kb1 then 16...Bf5+ 17.Ka1 Bc2
 wins the exchange.
16... Bf5+
17.Kb3



17.Kd2 or Bd3 and Black wins the
 queen with 17...Bc5
17... c5!!
18.Qd2
 And now the White queen has no
 squares available! En passant capture
 will not help matters because of
 18.dxc6 bxc6 19.Kxa3 Rb8 and then
 checkmate if 20.c5 (20.Qc5 Rb5!
 21.cxb5 Qa5+ and pawn takes
 queen.) 20...Qa5+ 21.Qa4 Qxc5+
 22.Qb4 Rxb4 23.cxb4 Qc3+ 24.Ka4
 Bc2+ 25.Ka5 Qa3#
18... Qa5
19.Bd3
 The only move - and Black can
 ignore the threat.
19... b5!!
20.cxb5

20.Kc2 bxc4! 21.Bxf5 Rab8 22.Bd7
 Rb2+ 23.Kc1 Rb5+! 24.Kc2 Qa4#
 Beautiful!
20... Bxd3
21.Qxd3



21... c4+!
22.Qxc4
 22.Kxc4 Qa4#!
22... Rac8
23.Qd3
 If 23.Rde1 Rxc4 24.Rxe8+ Kh7
 25.Kxc4 Qa4+ 26.Kd3 Qxb5+ and
 Qxe8
23... Re4!
 Another beautiful move.
24.Kc2
 24.c4 Qb4+ 25.Kc2 Qb2#
24... Rec4
0-1





Chess Etchings

By Iain Mackintosh



Chess by Francisco Javier Lara



A Game of Chess by Alexander J Heaney



Chess Players by Saul Jacob Rabino



Chess Players by Charles Bragg



Chess Players by Irving Amen



Chess Players and Horse by Mandy Sand



Checkmate by Irving Amen



Pawn Pun by Elaine Rothwell



Challengers Update

By Mickey Blake

The 2023 Season has one game remaining which is between Robert Gilbert and John Armstrong. Robert and John both require a win to join Andrew MacMillen, John Dunn at the top of the table.

ICCF Nr.	Entrant	Name	Games	Complete	Ongoing	Pts	
620454	8	MacMillen, Andrew Neil	8	7	0	6	86%
620628	3	Dunn, John	12	12	0	6	50%
620603	1	Armstrong, John McKenzie	12	11	1	5	45%
620713	4	Gilbert, Robert	16	14	1	5	36%
211024	10	Whittaker, Ian P	4	4	0	4	100%
620819	12	Campbell, Darren	4	4	0	4	100%
620794	11	Anderson, Thomas Robb	4	4	0	4	100%
620723	2	Carswell, David	2	2	0	1	50%
620619	6	MacDonald, Murdo	2	2	0	0	0%
620393	7	MacGregor, Colin A	2	2	0	0	0%
620648	5	Hardwick, Martin Edward	6	6	0	0	0%
620844	9	Rafferty, Frey	Silent Withdrawal				0%

The 2024 Season has begun with 10 players, Please remember that you can enter and request pairings at any time of the year.

ICCF Nr.	Entrant	Name	Games	Complete	Ongoing	Pts
212273	4	Bruce, Robert	8	4	4	3.5
620603	1	Armstrong, John McKenzie	8	6	2	3
212404	8	Pettigrew, Stephen	6	2	4	2
620393	7	MacGregor, Colin A	4	2	2	1.5
620628	3	Dunn, John	8	2	6	1
620648	6	Hardwick, Martin Edward	6	4	2	0
620713	5	Gilbert, Robert	10		10	
211024	9	Whittaker, Ian P	4		4	
620723	10	Carswell, David	4		4	
620704	2	Beveridge, Colin	2		2	



International Update

By David Kilgour

Counties & Districts Correspondence Chess Championship 2024

Russell Sherwood of Wales, on behalf of the Joint British Committee (formerly BCCA) is pleased to announce the 2024 Counties and Districts Correspondence Chess Championship.

As in the past the event will be made up of 3 Divisions of teams of 8 players, using the Hutton pairing system. As each player only undertakes 2 games, this is an ideal event for both new and experienced players.

The closing date for entries is the 7th of April, with an expected start date of the 21st of April, leading to an end date of 22/02/2025 with any remaining games going to Adjudication. The entry fee is £15 per team and entries should be sent to the Tournament Organiser, Russell Sherwood, who will confirm payment options.



Endgame Studies

By Iain Mackintosh

The world of endgame studies can seem a bit esoteric to the average chess player, but it is a highly developed form of the game with titles, prizes and accolades awarded to the best practitioners.

By way of an introduction, we feature the Ukrainian Sergey Tkachenko, who has been active in the field since the late 1970s. Here are the notes he penned on becoming a columnist for Chess Today magazine in 1978.

I was born on 26th January 1963. I spent my early years in Bolgrad, a small town south of Odessa, (he is now expatriated following the Russian invasion).

Until I was 15 years old, I concentrated on the practical side of chess and came close to the candidate master level. In October 1978 I saw an issue of the Shakhmaty v SSSR magazine, with an announcement of a chess studies contest.

It was organised in honour of the 50 year jubilee of John Roycroft, founder of the first chess composition magazine in the world. How naive I was! I sent Mr. Roycroft the finish of one of my practical games, believing that this was a chess study. Many thanks to the great John Roycroft, who gave some attention to my discovery and even awarded me with a special prize for the opening — my exciting journey in the Ocean of chess studies had begun!

I got a 'higher education' in chess composition at the traditional composers' festival in Odessa, attended by the leading composers from all over the Soviet Union: David Gurgенidze, Anatoly Kuznetsov, Oleg Pervakov and many others.

In the last 25 years I have composed approximately 130 studies and 32 of them were awarded highest prizes at competitions. I've won the Ukrainian chess composition championships in the studies section four times.

I am a champion (5th WCCT) and the vice-champion (6th WCCT) of the world - as a member of the Ukrainian composer's team, where I also act as a coach. As it happens, for the moment I am the only composer in the Ukraine who holds the title National Grandmaster in chess composition.

Now a few words about my credo as a chess composer. In my view, chess is a great art. Therefore the study for me is, first of all, a kind of spectacle, which should impress by miraculous acts and the originality of the idea. The spirit of chess, its energy and its magic should live in the chess study.

In studies I prefer light, elegant play. When composing, I try to find natural starting positions. But a study's main point should radically change the banal development of events. I am definitely for a close link between chess composition and practical play. I live awaiting for my new meeting with a chess miracle.



Winner, Hastings 1995



1... **b2**
 [1...bxa2 2.Nxa2 f5 3.Nd2 f4 4.Nf3 Kb5 5.Nc1 Kc4 6.Kf6 Kc3 7.Kf5 Kc2 8.Ne2 Kd3 9.Ned4 Ke3 10.Kg4 Kf2 11.Kh3]
2.Nb3+ **Kb4**
 [2...Ka4 3.Nc3+]
3.Ned2
 [3.Nbd2? f5 4.Nd6 Ka3]
3... **Ka3**
4.Nb1+ **Kxa2**
5.N3d2 **f5**
6.Ke6 **f4**
7.Kd5 **f3**
8.Kc4 **f2**
 [8...Ka1 9.Kd3]
9.Nc3+
 [9.Kb4? Ka1]
9... **Ka1**
 [9...Ka3 10.Ndb1#]
10.Nb3#

1-0

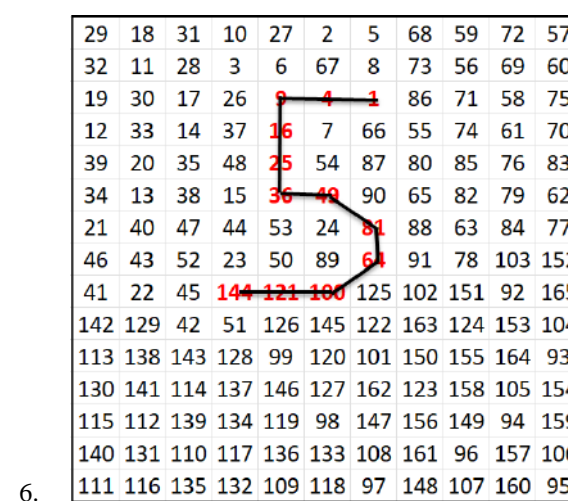
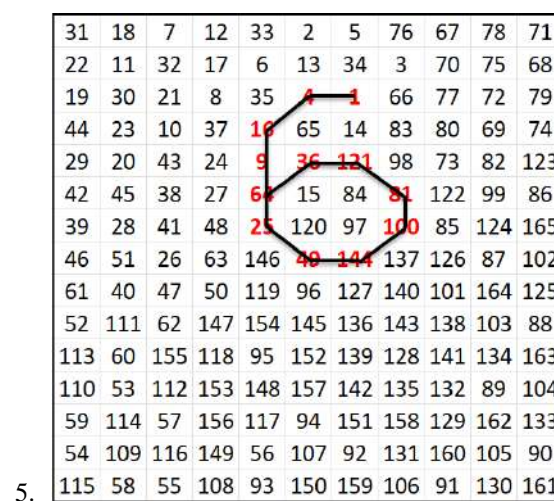
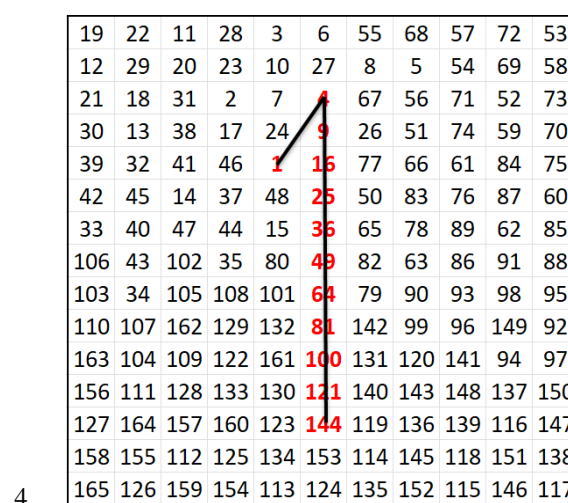
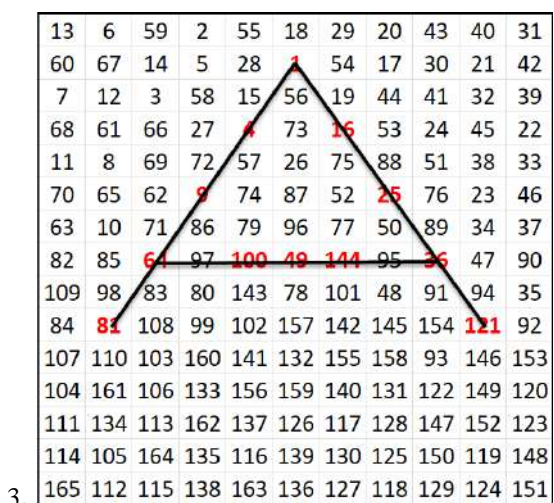
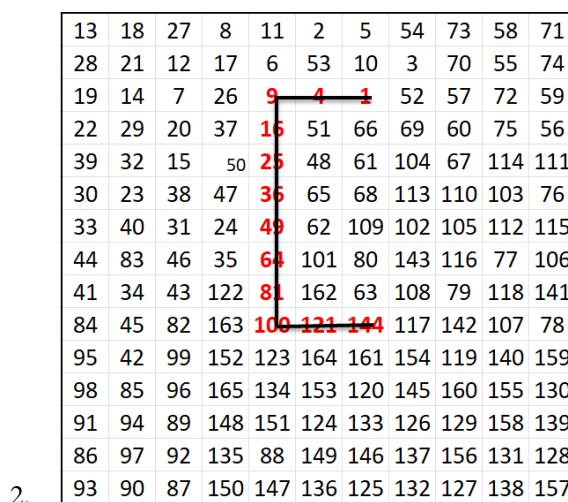
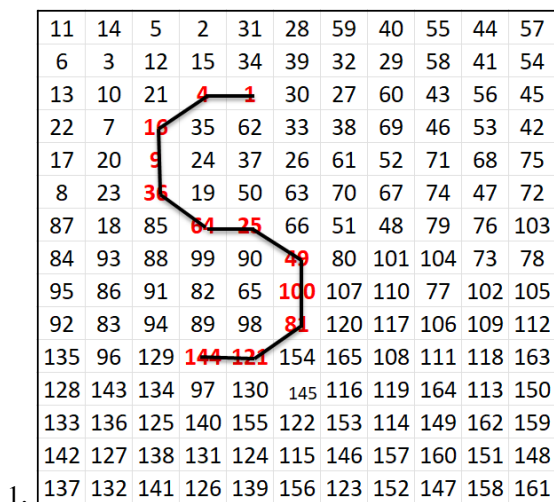




Knight Tour on 165 Cell Board

By Awani Kumar

SCCA Magazine has come out with its 165th issue and let us celebrate it with some interesting knight tours on 11×15 (= 165) cell board. Figures 1 to 3 are monogram tours of knight. Here the line joining the square numbers $1^2, 2^2, 3^2, \dots, 12^2$, namely 1, 4, 9, ..., 144 delineate 'S', 'C' and 'A', the first letters in the Scottish Correspondence Chess Association. Figures 4 to 6 have the square numbers delineating '1', '6' and '5', the numerals in 165. Readers may like to compose more such figured tours.





Miniatures. We have all seen them from time to time. Sometimes they occur in our own games and, when they occasionally take place, we think for a while that we have created a brilliancy.

Most of the time, this turns out not to be the case. On most occasions the opponent has simply blundered or has selected a variation that is quite unsound.

For this edition, we have found five miniatures most of which are 60-90 years old. The antiquity of some of the games is such that in a few instances we only know the surnames of some of the players.

Two the games are particularly remarkable. One is a stunning combination played by a young Leonard Barden. The other is an extremely rare loss for Paul Keres from a game played when he was just 17.

For the various reasons alluded to above we simply show the games moves without commentary for you to enjoy at your leisure.

Blazej,A. - Mikulka,M. Albin Counter Gambit [D08]
20.03.1930

1.d4	d5
2.Nf3	Nc6
3.c4	Bg4
4.e3	e5
5.dxe5	d4
6.Qa4	Bxf3
7.gxf3	Bb4+
8.Nd2	dxe3
9.fxe3	Qh4+
10.Ke2	0-0-0
11.f4	Qg4+
12.Nf3	Nxe5
13.fxe5	Qxc4+
14.Kf2	Be1+

1-0



Schrotter,B. - Ludwig,C. Scandinavian Defence [B01]
20.03.1933

1.e4	d5
2.exd5	Nf6
3.d4	Nxd5
4.c4	Nb4
5.Qa4+	N8c6
6.d5	b5
7.cxb5	Nd4
8.Na3	e5
9.dxe6	Bxc6
10.Be3	Qh4
11.b6+	c6
12.b7	Rd8
13.Rd1	Bc5
14.Ne2	Bb3
15.Rxd4	Bxa4
16.b8Q	Bxd4
17.Qb7	Nd3+
18.Kd2	Bxe3+
19.fxe3	Qe1#

0-1



Young - Barden,L. Two Knights [C58]
Correspondence, 20.03.1945
[Notes by Alastair Dawson]

1.e4	e5
2.Nf3	Nf6
3.Bc4	Nc6
4.Ng5	d5
5.exd5	Na5
6.Bb5+	c6
7.dxc6	bxc6
8.Qf3	cxb5
9.Qxa8	Bc5
10.Ne4	Nxe4
11.Qxe4	0-0
12.0-0	Re8
13.Qe2	Bb7
14.Qxb5	Bb6
15.d3	Re6
16.Kh1	Bxg2+

[16...Bxg2+ 17.Kxg2 Qa8+ 18.f3 Rg6+ 19.Kh1 Qxf3+ 20.Rxf3 Rg1#]

0-1



Richardson - Horne Petroff Defence [C42]
20.03.1940

1.e4	e5
2.Nf3	Nf6
3.Nxe5	d6
4.Nf3	Nxe4
5.d4	d5
6.Bd3	Be7
7.0-0	Nc6
8.Re1	Bg4
9.c3	f5
10.Qc2	0-0
11.Nfd2	Bd6
12.g3	Nxf2
13.Kxf2	f4
14.Bxh7+	Kh8
15.Kg2	Nxd4
16.cxd4	fxg3
17.hxg3	Qf6
18.Nf1	Rae8

0-1



Keres, P. - Menke King's Gambit Accepted[C33]
Correspondence, 20.03.1933

1.e4	e5
2.f4	exf4
3.Nc3	Qh4+
4.Ke2	d5
5.Nxd5	Bg4+
6.Nf3	Nc6
7.Nxc7+	Kd8
8.Nxa8	Ne5
9.h3	Bh5
10.Rg1	Qg3
11.Qe1	Nxf3
12.gxf3	Qxf3#

0-1

