

Scottish Correspondence Chess Association

Magazine No.123

Autumn 2013

- **Notices**
 - *3rd Webserver Open and Best Game Prize*
- **ICCF Grading List 2013/4**
 - *George summarises the Q4 statistics*
- **Book Review**
 - *Vassily Ivanchuk – 100 Selected Games*
- **Games Column**
 - *Loads of annotated games*
- **ICCF Congress Kraków 2013**
 - *George brings an update from Poland*
- **International Update**
 - *George reviews overseas events*

4 Printed Issues
Price £5 per annum



Photograph from British Museum



As usual, we start with the weather report which, this time, has stretched the editorial adjective collection to breaking point. Summer has been very hot here and thousands of Scots have formally applied for emigration visas to get away from fits of sweating and periodic outbreaks of happiness.

Mercifully, the autumn gods have returned and the ferry boats to Spitzbergen and South Georgia can rest at anchor once again. I'm off to the charity shop to exchange a number of soiled t-shirts for an industrial-strength fleece.

We bring you another packed edition, with George Pyrich having written almost all of it this time! Many thanks to George for his sterling efforts.

An extended Notices page confirms the start of our 3rd Webserver Open later this year, plus the inaugural SCCA Annual Best Game Prize. Also chronicled are updates to ICCF rules plus good news - reduced entry fees from January 2014!

George then analyses the fourth ICCF rating list of 2013 where a number of players notched up games milestones.

George also contributes his second book review, looking over *Vassily Ivanchuk – 100 Selected Games* written by the Ukrainian ICCF GM Nikolay Kalinichenko.

A bumper-sized Games Column features members Robert Montgomery, Iain Mackintosh, Alan Bell, John Sargent, Derek Price, Ian Jamieson, Eoin Campbell, , Richard Longden, David Cumming and Brian Goodwin.

The feature article in this issue is an extended report from Kraków on this year's ICCF Congress. Needless to say, it's penned by George whose ancestors hail from Tarnow, some 50 miles south-east of the Polish city.

George then supplies another meaty international update, with a couple more annotated games featuring members Alan Borwell and Geoff Lloyd.

So, please remember to enter our 3rd Webserver Open, and dust down your favourite 2013 game(s) and send them in for review!

SCCA Membership

Annual: £10/year buys you entry to all SCCA domestic events and friendly international matches, plus 4 quarterly e-magazines.

Life: £100 gets you annual membership for the rest of your days (plus a year's worth of printed magazines to try out).

Patron: £125 (+ any further donation you care to make) gets you life membership and your name on something commemorative.

SCCA 100 Club

The 100 Club is an important revenue-earner for the SCCA and it helps us to keep our fees low and/or unchanged year on year. Responsibility for the 100 Club rests with our Treasurer, Gordon Anderson.

Units cost £1 with some members taking one unit while others take as many as 10 units per month. From the Association's perspective paying by Bankers Order is most convenient.

If you don't already subscribe to the 100 club please consider if you can help the SCCA by taking out units and make contact with Gordon whose contact details are shown below.

Recent 100 Club Winners

2013	1st	2nd
September	G W G Livie	J Anderson
August	I Mackintosh	J S Murray
July	J Anderson	R W M Baxter

SCCA Officials

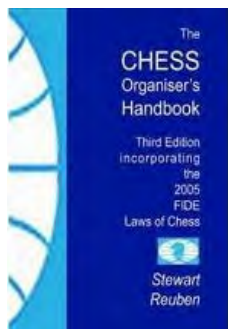
SCCA Officials				
President	Iain Mackintosh	7 Tullylumb Terrace, Perth PH1 1BA	+44 (0) 1738 623194	president@scottishcca.co.uk
VP & International	George Pyrich	13 Ardgartan Court, Balfarg, Glenrothes KY7 6XB	+44 (0) 1592 749062	international@scottishcca.co.uk
Secretary *				secretary@scottishcca.co.uk
Membership	Kevin Paine	47 Park Hill Drive, Frome BA11 2LQ	+44 (0) 1373 467585	membership@scottishcca.co.uk
Treasurer	Gordon Anderson	63 Wellin Lane, Edwalton, Nottingham NG12 4AH	+44 (0) 115 923 1021	treasurer@scottishcca.co.uk
Member	Jim Anderson	162 Fountainbleau Drive, Dundee DD4 8BJ	+44 (0) 1382 501649	jim.anderson@scottishcca.co.uk
Member	Alan Borwell	8 Wheatfield Avenue, Inchtute PH14 9RX	+44 (0) 1828 686556	alan.borwell@scottishcca.co.uk
Games Editor	Iain Mackintosh	7 Tullylumb Terrace, Perth PH1 1BA	+44 (0) 1738 623194	games@scottishcca.co.uk

NB Secretarial duties will be undertaken by Kevin Paine (enquiries), Jim Anderson (domestic events) and Iain Mackintosh (minutes) pro tem.



SCCA Secretary

This is the last time this vacancy will be advertised for the time being. We've tried for over a year now, and the silence has been deafening. If we can't fill it by end-2013, we'll just have to do less organising of domestic events in 2014.



The main parts of the job are:

- Primary contact point for outside bodies, queries, etc.
- Organise & minute committee meetings (3 fairly fixed in Jan/Feb; May/Jun and Aug/Sep, with others as needed)
- Organise domestic events to start in Jan; appoint & liaise with TDs; organise trophies & medals at season-end
- Other admin as needed

The busy period is Dec/Jan which may appeal to candidates looking to avoid shopping trips and visiting relatives. The remainder of the year is fairly light.

At present, we share elements of the job across committee members, all of whom lead busy lives!

If you can help, please get in touch with Iain at president@scottishcca.co.uk.

Robert E Rough



Robert E Rough of Inverness sadly died on Thursday, September 14th after a short illness.

Robert was a great chess enthusiast and a previous SCCA member. David Cumming, also of Inverness, provides this appreciation:

Robert was a much loved father and grandfather who lived life to the full.

He loved the outdoor life, and regularly went cycling and

hill walking. Indoors he had many friends both inside and outside the world of chess.

Robert did occasionally play CC, but he was better known for his over the board activities. He regularly competed at congresses, and for a few years he attended the Gibraltar Congress where he rubbed shoulders with the likes of Korchnoi, Short, Ivanchuk and many others of their ilk. Although not quite of the same playing calibre as those greats, Robert was very enthusiastic about his chess.

Robert was a friendly father figure at Inverness Chess Club where he was Club Secretary. He mentored and supported many of the Club's junior players up until very recently when he took ill. Robert would visit their homes on invitation when he had time off work to go over their games, provide them some "target practice" in terms of chess playing, and offer bags of friendly advice and support.

On a personal level, after I had to stop attending the Club in 2008 due to my financial position, I kept in regular contact with Robert by telephone and email, and I would phone almost every Wednesday night after he got home from the Club to see how things went, comparing notes regarding our latest chess book acquisitions and chess software. He was somebody I could confide in with events, gossip and goings on in my personal life, etc.

Whilst Robert and I did not always see eye to eye on every issue (Robert was more traditionally minded about certain things than I am), we could always agree to differ and move the conversation on. Robert published many of my games on the Inverness Chess Club website, and he was definitely one of the "good guys".

ICCF European Postal Championship



Marco Caressa, ICCF-Europa Zonal Director, writes to confirm new rules agreed by the European Zone at the 2013 Congress. They become effective from 1st January 2014.

European Postal Championship Open Round

Will consist of 4 players per section, double-round robin, starting continuously. The following players have the right to participate in the European Postal Championship Open Round:

1. players new to ICCF or without an ICCF Rating.
2. a player rated below 2100 at the time of application.

European Postal Championship Semi-Finals

Will consist of 6 players per section, double round robin, starting continuously. The following players have the right to participate in European Postal Championship Semi-Finals:

1. a player rated 2100 or over at the time of application.
2. a player who has won a European Postal Championship Open Round is entitled to one start in the Semi-Finals, regardless of rating.
3. a player without an ICCF rating who is nominated by the National Federation and accompanied by a statement of qualification confirming the player is considered to be of sufficient strength to enter directly into the Semi-Finals.

European Postal Championship Final

Will normally consist of 13 players, single round robin, but the Tournament organiser shall have the power to change the number of players to 11, 15 or 17. Starting at the Tournament Organiser's discretion. The following players have the right to participate in European Postal Championship Final:

1. the 1st, 2nd & 3rd placed players from the previous Final.
2. the 1st & 2nd placed players in the Semi-Finals.

In the event that the number of qualifiers exceeds 17, the tournament organiser shall admit players to the Final in the following order of priority:

1. those players who qualified for a previous Final but were omitted under this order of priority.
2. 1st placed player in a previous Final
3. 1st placed player from a Semi-Final section.
4. 2nd placed player in a previous Final
5. 2nd placed player from a Semi-Final section
6. 3rd placed player in a previous Final

The Final qualifications can be deferred only once.

Where vacancies exist for a Final, after all qualifiers wishing to play have been included, then the European Zonal Director may admit the next qualified players from the previous Final or Semi-Final, namely those who failed to qualify on the basis of a tie-break.

The European Zonal Director also has the right to grant up to two free places on the basis of extraordinary international performance.

It should also be noted that Server qualifications can be used for the Postal stages, but not vice versa.

Third SCCA Webserver Open

Entries are now open for this popular event which tries to bring the Scottish CC community together worldwide. You can enter if you are Scottish by birth, residency, or a member of either Chess Scotland or the SCCA.

We had hoped to run three parallel webserver events - one by invitation and two by open entry as previously. In practice, the invitation event proved impossible to organise,

mainly because of the heavy commitments of the top OTB players in Scotland. Without the numbers and rating strengths first envisaged, we've decided to shelve the idea for this year at any rate.

That leaves us with two main open sections, and we've made some adjustments to rating bands and prize monies as a result of there being no invitation event.

1. **Webserver Open A.** Aimed at Scottish OTB & CC players with ratings ≥ 2000 . The number of rounds and sections will depend on entries and the prize fund will extend to £400.

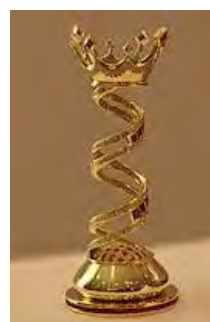
2. **Webserver Open B.** Aimed at Scottish OTB & CC players with ratings < 2000 and no computer assistance. The number of rounds and sections will depend on entries and the prize fund will extend to £300.

Entry into both events is **free**, and subject to the eligibility criteria outlined above. In addition to **cash prizes**, we have also received a number of **chess DVDs** from a mystery donor which will be distributed as prizes to placed players.

Both events will be played entirely on the webserver with the standard time control of **10 moves in 40 days**. In order to allow for advertising through Chess Scotland media, the closing date for entries will be **15th November** and we hope to commence play by **30th November**.

Email **George Pyrich** at international@scottishcca.co.uk to register your interest. We hope to get a good response from both CC and OTB players of all strengths, and wish all our entrants an enjoyable and successful tournament!

SCCA Annual Best Game Prize



We confirm that the inaugural SCCA Best Game Prize will operate for games completed during 2013.

The trophy (which won't look like the illustration!) will carry the inscription of its sponsor, Raymond Burr ridge, i.e.

**The R.J. Burr ridge Trophy
SCCA Best Game Prize 2013
(winner's name)**

To recap on the rules:

- Entries will be games which finish in a given calendar year (2013 in this case);
- Entries will be restricted to events organised by SCCA or ICCF;
- Only SCCA members can submit their games (wins or draws);
- The submission period will close at the end of January 2014;

- The Committee will appoint a judge (who cannot submit a game!);
- The winner will be announced by end-March 2014 and we'll feature the game in a subsequent magazine;
- A trophy miniature and certificate will be awarded to the winner.

In the first instance, please send your games to Iain Mackintosh at president@scottishcca.co.uk – multiple entries are allowed – to reach him by end-January 2014.

Reduced ICCF Entry Fees



ICCF reduced almost all its entry fees quite substantially (ranging from 17-29%) at its last Congress in Kraków, Poland.

SCCA fees for its members who enter ICCF events have now been reduced in line with these changes, and will take effect from 1st January, 2014. Changes have been calculated by converting euros to sterling and rounding to 50p.

ICCF Event	New	Old	Save
World Champ prelims/semis	£21	£27	22%
World Champ cands (1st stage)	£12	£12	0%
World Champ ladies semi	£10	£15	33%
Class (7-player)	£3.50	£4.50	22%
Class (11-player)	£6	£8	25%
GM norm	£21	£27	22%
Master norm	£17	£22.50	24%
Thematic	£6	£8	25%
World Cups	£8.50	£11	23%
Veterans' World Cups	£8.50	£11	23%
Webserver Open	£4.50	£6	25%

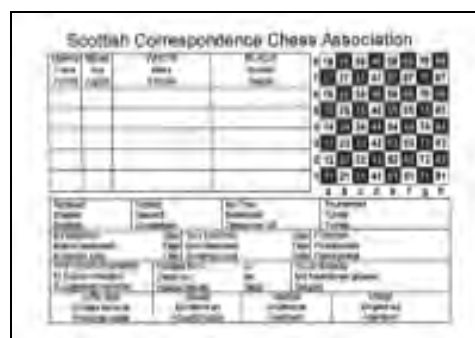
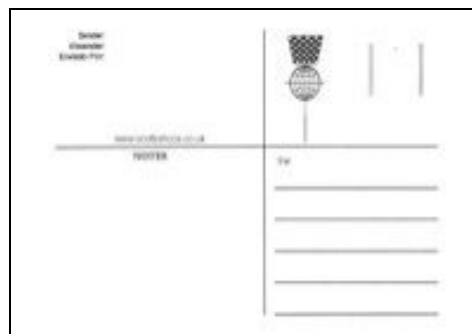
ICCF EU Zone Event	New	Old	Save
Postal open class	£3.50		
Postal EU Champ semis	£6		
Postal EU Champ final	£10		
Server Events	per	ICCF	

In recent years, record numbers of SCCA members have entered for ICCF events, so this is good news for those of you looking to gain further international experience and perhaps some title norms.

International play is thoroughly recommended for players of all strengths. ICCF has a rich variety of tournaments and, despite language difficulties, you can still chat to most opponents and make lasting friendships.

Remember that entry to all ICCF events can be made via **George Pyrich** at international@scottishcca.co.uk – as with most national federations, our fees for members are a good bit less than direct entry via ICCF.

CC Postcards



The SCCA has a stock of cc postcards showing the SCCA logo and website address. They are suitable for domestic and international use (English, German and Spanish used). Orders in units of 100.

The cards are supplied at their production cost (£2.50/100) and p&p is also required. As a guideline, 200 cards delivered recently cost £7.60 - £5 for the cards, and £2.60 UK second class postage. Orders to Iain Mackintosh at chess@iainmack.co.uk please.

SCCA Membership Renewals



Kevin Paine will shortly be issuing reminders to all of you to begin or renew subscriptions for 2014.

To save postage costs, he plans to do most of his work by email this year.

To assist, he'll be placing a membership form on the membership page of the SCCA website for you to download.

Once complete, you can return this by email or post as you prefer.



2013/4 Grading List

By George Pyrich

The fourth ICCF grading list of 2013 has been published and the new grades are based on 3 months' results reported between 1 June and 31 August 2013. The grades will apply to internationally graded games starting between 1 October and 31 December 2013.

Peter Bennett continues to accumulate grading norms towards the Scottish Master (SM) title - with the increased frequency of grading lists, this is the most prevalent route nowadays.

There are two new entrants on this list – both Campbells – new patron member Eoin, and returning member Iain.

As usual, a number of members have passed games milestones. SM Geoff Lloyd has hit the 600 mark, and Ian Marshall is now looking back at 400. Also on 400 is the ever-prolific Raymond Burrige, who clocked up an incredible 64 graded games in the last rating period!

You need to complete 12 ICCF-eligible games to obtain a provisional rating (* below). Provisional ratings apply until 30 games have been processed. Rating changes are denoted by arrows. Email grader@scottishcca.co.uk if you have any queries.

No.	Name	Results	Grade	No.	Name	Results	Grade
318	Almarza Mato, C	748	2146 ↓	515	Jack, J P E	28	1766 ↔ *
518	Anderson, G M (SM)	245	2293 ↓	447	Jamieson, I M	61	2003 ↓ *
121	Anderson, J	225	1736 ↔	322	Jessing, M	29	2083 ↔
049	Armstrong, A	154	1900 ↓	1126	Kelly, J	12	1728 ↔
313	Armstrong, J McK	225	1599 ↑	548	Kilgour, D A (GM)	306	2337 ↑
511	Beecham, C R (IM)	368	2461 ↔	260	Knox, A	120	1596 ↑ *
599	Bell, A D (SM)	134	2413 ↑	1117	Laing, D	22	2075 ↓
501	Bennett, P G	191	2336 ↓	256	Lennox, C J (SM)	157	2278 ↔
431	Binnie, J	28	1626 ↔ *	503	Livie, G W G (IM)	194	2337 ↔
509	Borwell, A P (IM)	888	2236 ↓	264	Lloyd, G (SM)	603	2270 ↓
427	Brooksbank, Dr K	75	1820 ↔	337	Loughran, R J	116	1564 ↔
424	Burrige, R J	400	1849 ↓	433	MacDonald, M	30	1564 ↔
435	Cairney, J	44	1960 ↓	584	MacGregor, C A	341	1845 ↓
601	Campbell, E S	27	1980 ↑ *	532	Mackintosh, I (IM)	571	2438 ↓
038	Campbell, I S	223	1835 ↓	216	MacMillen, A N	588	1860 ↑
	Clark, S L	32	1999 ↑	566	Marshall, I H	407	1983 ↓
173	Cook, W M	69	1926 ↔	434	Matheis, T (IM)	179	2436 ↑
364	Coope, D W	586	1939 ↓	412	McKinstry, J	70	1564 ↓
247	Cormack, W H	71	1921 ↔	401	Moir, P J	156	1631 ↑
527	Craig, T J (SM)	351	2353 ↓	598	Montgomery, R S	219	2317 ↑
166	Cumming, D R (SM)	675	2300 ↑	564	Murray, J S	35	2013 ↑
422	Dawson, Prof A G	77	2106 ↑	440	Neil, C	93	1608 ↓
572	Dempster, D	726	1727 ↑	429	O'Neill-McAleenan, C	96	1954 ↑
030	Dyer, M T	99	2089 ↔	444	Paine, Dr K A	142	2288 ↑
371	Edney, D	173	1952 ↓	1012	Paulin, A	40	2008 ↔
372	Flockhart, H	27	2133 ↔ *	315	Petrie, A	62	1535 ↓
459	Fraser, R A	60	1853 ↔	432	Price, D	209	2043 ↓
086	Gillam, S R (SM)	134	2288 ↓	048	Pyrich, G D (IM)	866	2215 ↑
551	Giulian, P M (SIM)	462	2401 ↑	439	Smith, M J	36	1932 ↑
124	Goodwin, B J	209	1873 ↓	463	Smith, P R	44	1709 ↓
445	Graham, S (SM)	354	2202 ↔	546	Stewart, Dr K W C	150	2097 ↔
399	Grant, J	34	1764 ↓	1120	Taylor, W	35	2055 ↓
596	Hardwick, M E	292	1429 ↓	452	Toye, D T	75	1569 ↔
063	Harvey, D	88	2069 ↑	530	Watson, J (IM)	145	2302 ↔
1013	Hilton, S H	122	1626 ↑				

Statistical Analysis

Total listed	69
New entrants	2
Deletions (inactive, lapsed or non-members)	0
Full grades (30+ games)	63
Provisional grades (<30 games)	6
Grading increases (↑)	21
Grading decreases (↓)	27
Grading static (↔)	21

Top 30 Grades

Beecham, C R (SIM)	2461	Lennox, C J (SM)	2278
Mackintosh, I (IM)	2438	Lloyd, G (SM)	2270
Matheis, T (IM)	2436	Borwell, A P (IM)	2236
Bell, A D (SM)	2413	Pyrich, G D (IM)	2215
Giulian, P M (SIM)	2401	Graham, S (SM)	2202
Craig, T J (SM)	2353	Almarza Mato, C	2146
Bennett, P G	2336	Dawson, Prof A G	2106
Kilgour, D A (GM)	2337	Stewart, Dr K W C	2097
Livie, G W G (IM)	2337	Dyer, M T	2089
Montgomery, R S	2317	Harvey, D	2069
Watson, J (IM)	2302	Taylor, W	2055
Cumming, D R (SM)	2300	Price, D	2043
Anderson, G M (SM)	2293	Murray, J S	2013
Gillam, S R (SM)	2288	Paulin, A	2008
Paine, Dr K A	2288	Jamieson, I	2003

Top 30 Games Played

Borwell, A P (IM)	888	MacGregor, C A	341
Pyrich, G D (IM)	866	Kilgour, D A (GM)	306
Almarza-Mato, C	748	Hardwick, M E	292
Dempster, D	726	Anderson, G M (SM)	245
Cumming, D R (SM)	675	Anderson, J	225
Lloyd, G (SM)	603	Armstrong, J McK	225
MacMillen, A N	588	Montgomery, R S	219
Coope, D W	586	Goodwin, B J	209
Mackintosh, I (IM)	571	Price, D	209
Giulian, P M (SIM)	462	Livie, G W G (IM)	194
Marshall, I H	407	Matheis, T (IM)	179
Burridge, R J	400	Edney, D	173
Beecham, C R (SIM)	368	Lennox, C J (SM)	157
Graham, S (SM)	354	Moir, P J	156
Craig, T J (SM)	351	Armstrong, A	154

Other Notes

This list includes a number of our members who are registered with other countries, and members who have played <12 games and have yet to receive a provisional rating. Players registered as SCO with ICCF, but who are not SCCA members, have been filtered out.

To check your rating online at any time, go to the ICCF webserver site (www.iccf-webchess.com), click on the Rating list link then complete the search boxes.

Note that ICCF (Gerhard Binder) has now discontinued support for the Eloquery program, previously available for download from www.iccf.com

The Eloquery software is now incompatible with 64-bit versions of the Windows operating system.

A number of useful online rating enquiry facilities are available at www.iccf-webchess.com



Book Review

By George Pyrich

Hello again! This time I've chosen something rather different, a biographical games collection. I rarely have any real interest in such books (the only others I have are volumes on Alekhine, Fischer and Korchnoi) but this time the subject, GM Vassily Ivanchuk, drew my interest and thus we have my selection this time, titled "Vassily Ivanchuk – 100 Selected Games" by Ukrainian ICCF GM Nikolay Kalinichenko (New in Chess 2013).



As its title implies, the book is a collection of best games played by the mercurial Ukrainian GM Vassily Ivanchuk who has maintained his place amongst the world's elite for some 25 years (nowadays we have similar such books devoted to players who weren't even born when Ivanchuk burst upon the world scene in the late 80's!) in its 302 pages.

As expected the book begins with its first chapter titled "Vassily Ivanchuk, a Portrait" but which runs to only 11 pages and contains only the briefest biographical details including several quaint and unusual statements - "born in 1969...into a family of intelligent parents" is one I found rather amusing! Doubtless this privileged upbringing helped him burst upon the chess scene with 1st place of the USSR U-25's Ch. in 1985, no mean feat for a 16 year old.

Instead this first section consists mainly of quotes attributed to Ivanchuk and others culled from numerous other sources over the years. Ivanchuk has very much "seen it, been it and done it" on numerous occasions throughout his lengthy career and I was a little disappointed that relatively few of the numerous "highs and lows" he has experienced over the years are mentioned.

However, a few of these are highlighted, the first being perhaps the greatest success of his career, outright first place in the 1991 Linares "Super Tournament" where he finished ahead of an elite field which included Kasparov and Karpov, defeating both in their individual games, and also his greatest disappointments, his tragic loss to Yusupov in their Candidates match shortly thereafter and his unexpected loss

in 2002 to his much younger countryman, Ponomarev, in the Final of the FIDE World Ch. Knock-out event.

One quote however attributed to Ivanchuk in this first section is perhaps especially pertinent to to-days correspondence players: "The computer is a good assistant. If the player leads the computer, and it helps him, this is good. But if the computer leads the player, this is bad. When there is time, it is best to work by oneself, or at least, try to do so."

Thereafter the book provides a selection of 100 best games from Ivanchuk's lengthy career. Ivanchuk is one of those who "lives and breathes" chess and his longevity amongst the world's elite is almost unequalled. His style of play is universal yet uniquely creative and, I think, unlike that of any of the really top players before him.

Over the years critics have claimed that his temperament is his Achilles heel, preventing him, like a few other "greats" (Keres comes to mind), from achieving the ultimate prize, World Champion.

His games are noted for their originality as well as brilliant sacrifices, energetic attacks and stunning tactical blows. However he is also capable of quietly converting small positional advantages in some games and excelling in strategically complicated positions in others. Who else would, after 1.e4 c6 2.d4 d5 3.f3 Qb6 play 4.a3!? (so that after Black's e6 he can play Nc3 and not be concerned by Bb4), and then go on to beat a top GM in just over 30 moves?

Many of his rivals are quoted as saying "it's impossible to prepare against Ivanchuk as he plays almost everything..." and the very wide range of openings amongst the 100 games are testimony to this – indeed the selected games serve almost as an openings manual!



Whilst Ivanchuk has produced many significant opening innovations during the course of his career, he gives the impression that, unlike say Fischer and Tal, he doesn't seek to simply "blow away" his opponent in the opening, being satisfied instead to obtain an open position with his pieces well developed where he can then proceed to outplay his opponents.

As stated, both his style of play and choice of openings are universal although he does seem to prefer to avoid closed positions with pawn chains and so rarely defends openings such as the King's Indian where such positions are more likely to arise.



As mentioned, Ivanchuk has held a place amongst the world elite for some 25 years, during which time his rating has only once slipped below 2700. However, it's now become noticeable that, at the age of 45, his results have become more erratic and that, whilst he still plays almost continuously in events throughout the world, he is now no longer a regular participant in the very top events – evidence

perhaps of the start of a gradual decline as becomes older. However, whatever the future holds, he has thus far enjoyed a truly glittering career and leaving a legacy of a great many outstanding games.

The book's back cover claims that its author, ICCF GM Nikolay Kalinichenko, has experience of chess writing although nothing is listed. However, this book represents a very considerable accomplishment and surely will be widely acclaimed. He is little known in ICCF circles, doubtless because he has never played on the ICCF server, his last event being a postal World Ch. Candidates event which started in 1999!

One small disappointment is perhaps that the book doesn't contain any tournament cross-tables although this omission is compensated by a number of photographs. All Ivanchuk's successes over the years are listed – the list runs to 2 whole pages, listing all the events he's played would take many more!

All in all, this is another typically well-produced publication by New in Chess – the English translation is very good and all the games are very well annotated and include many diagrams. So, switch off the computer, take out your board and set and then enjoy the wonderful games!



ChessBase CD Review

By Bernard Milligan

The French Defence. 3.Nd2: a complete repertoire for White By Sergei Tiviakov



Sergei Tiviakov has been very successful in beating the French Defence with an overall score of 80% (well above average) from 219 games played. The DVD contains lots of exclusive information and databases not available anywhere else. The main database consists of about 312,000 games.

All the games the author has played in the French Defence are provided, many of which have not been published previously. Also, there are on this DVD a reference database and a database with annotated games. It also contains interactive training: test yourself and find out if you have mastered your new repertoire and if you are ready for battle at the board. Video running time: 5 hours.



The aim of this DVD is to provide the player with White with a complete repertoire. 3.Nd2 is an excellent weapon with which to fight the French Defence, as the author of this DVD explains. Based as it is on his personal experience and the latest theoretical developments, this DVD is an excellent starting point from which to learn how to play 3. Nd2, the Tarrasch Variation.



Games Column

By Bernard Milligan

The 2012-13 SCCA Championship is now complete, and our first game is a fitting climax to the event. Robert Montgomery had come through the field to contest the lead, but needed to win his final match to prevail. Both players annotate for us.

Mackintosh, Iain (2395)
Montgomery, Robert (2286)
SCCA Championship 2012–13
Scandinavian Defence [B01]
[Notes by Iain Mackintosh, Robert Montgomery]

This is the concluding game from the SCCA Championship 2012–13. Iain held a half-point lead, so the onus was on Robert to gain the full point.

1.e4 d5

IM: The Scandinavian Defence, still a relatively unusual reply to 1.e4, but offering Black a solid position after the early travels of his queen.

RM: I have played the Scandinavian both main line and the Qd6 lines for a few years now. It is less heavily analysed than the Sicilian and can give Black chances to play for the win as White often over-reaches in the face of the provocative queen moves.

2.exd5 Qxd5

3.Nc3 Qa5

4.Nf3

RM: White deviates from the main line. 8.Qe2, while still popular, is being replaced by 8.Ne4 and 8.Nd5 when Black is forced to move the queen again. 4.d4 Nf6 5.Nf3 c6 6.Bc4 Bf5 7.Bd2 e6 8.Qe2 Bb4 9.0–0–0 Nbd7= is the most popular continuation.

4... Nf6

5.d4 Bf5

6.Ne5 c6

RM: Black makes space for the queen. Nc4 can make things potentially awkward for Black. 6...c6 also protects the d5 square which can be a problem for Black in some lines.

7.Bd3 Bxd3

RM: I am not unhappy about exchanging on d3 as removing some pieces makes the defence a little easier. The threats against c2 tend to be illusory as Black just doesn't

have time to snatch pawns while behind in development.

8.Qxd3 Nbd7

9.Nc4 Qc7

10.Qf3 Nb6

11.Bf4 Qd7



12.Ne5

IM: White gambits a pawn for open lines.

RM: Black has provoked White into offering a pawn. White is trusting on better development to push home the advantage. Black on the other hand is hoping to weather the storm. Anyway, the alternatives don't look that appealing so might as well take the material.

12... Qxd4

13.Rd1 Qc5

14.0–0 e6

15.a3 a5

16.Ne4

IM: And a second offering follows.

16... Qxc2

RM: No good reason for declining the second pawn. I didn't like the alternative taking on e4.

IM: Accepted by Black, and now things start to get interesting...

16...Nxe4 17.Qxe4 Be7 18.Be3 Qb5

19.c4 Qa6 20.b4 is an alternative try, though White retains a positional plus.

17.Rfe1 Nbd5

IM: **17...Nxe4!?** **18.Rxe4 Bc5**

19.Rc1 Qxf2+ 20.Qxf2 Bxf2+

21.Kxf2 gives Black three pawns for his piece.

RM: I never seriously considered **17... Nxe4**. I spent most of my time working out that I wasn't automatically losing after White's next move.

18.Bh6!? Rd8

18...gxf6? 19.Nxf6+ Kd8 20.Nxd5 exd5 21.Qxf7+-

19.Rd2

Qa4

IM: Blacks eighth queen move!

20.Ng5

gxf6

21.Ngxf7

Bg7

22.Nxd8

Kxd8

23.Nf7+

Kc7

24.Nxh8

Bxh8

25.Rxe6



IM: Black has played accurately in defence, and we now have a fascinating material imbalance - two rooks versus three minor pieces.

RM: I had spent a lot of time looking at this position as after 18.Bh6 it is virtually forced. Neither of us has any previous experience of this type of position.

25... Qc4

26.Re1

IM: Safety first.

26... Kb6

27.Qf5 Bg7

28.b4 a4

RM: Black must not open the queenside for White's rooks by exchanging pawns. Besides, this pawn has a vital role to play later in the game.

IM: **28...axb4 29.axb4 Qg4**

(29...Qxb4?? 30.Rb1) 30.Qb1 works to White's advantage.

29.Rd3 Qf4

IM: The queen's last promenade - that's 10 out of 29 moves!

30.Qxf4 Nxf4

31.Rf3 N6d5

IM: The close support of the minor pieces contrasts with the longer-range potential of the rooks and makes it difficult for both players to establish a clear plan. Tactics abound in all the lines.

RM: Now that the queens are off it is time to take stock. Black has survived White's onslaught.

The 3 minor pieces need to co-ordinate to prevent White over-running the kingside while creating threats on the queenside. It is not hard to see that White rules the kingside and will be able to push the pawns eventually, forcing Black to give up material to prevent the pawns queening - the trick is when and how to do it. So, before giving up material Black has to create threats on the queenside and make White use one of the rooks to hold up the Black pawns. Passive defence by Black won't work.

32.Kf1 Bb2
33.Rb1 Bh8



34.g3
IM: White looks to establish a wedge of k-side passed pawns. 34.Re1!? heading for e8, also looks a plausible line.

34... Ne6
35.Rf7 Bc3

RM: There is no point in trying to hold the h-pawns. Black has to threaten the queenside to create counterplay.

IM: 35...Ng5? 36.Rd7 and White looks better with threats of b5 and h4.

36.Rxh7 Nec7
37.Rxh6 Nb5

IM: White's pawns look menacing, but Black correctly calculates he can

achieve the same effect on the q-side.

38.Rd1

IM: threatening Rxd5.

38... Ndc7

39.f4 Nxa3

RM: Black has finally got his passed pawn which means White can't bring both rooks into the attack.

40.g4 Ncb5

RM: By protecting the bishop the other knight can go to c2 or c4 and not worry about Rc1.

41.Ke2 Nc2

42.f5 Be5

RM: Perhaps this is where I missed a chance to put pressure on White after 42...a3 then taking on b4.

43.Kf3 a3

44.f6 Nd6

45.g5 a2

46.Rh3 a1Q

47.Rxa1



47... Bxa1

RM: This is better than Nxa1 which takes the knight out of play and stops Black taking on b4. The knight should stay within striking distance of the pawn and the centre.

48.Kg4 Nxb4

IM: The material balance swings to Black...

49.Rf3 Nd5

50.f7 Nxf7

51.Rxf7

IM: ...then goes from swings to roundabouts.

51... c5

52.g6 c4

53.g7 Bxg7

54.Rxg7 Kc5

RM: Tantamount to offering a draw but what else is there? I felt that 54...Kc6 and moving the b-pawn was too slow and that Black had to stay in touch with the c-pawn with the king to ensure the draw. I might need to win but there is little point in throwing the game away when I can't win anyway.

55.Rxb7 c3

56.Rb1

Draw offered by IM: "I think this has to be a draw now. Fairly soon I've got to exchange R for P, and later you'll do the same with the N (or win the pawn, but same result)."

RM replied: "Unfortunately I have to agree with you it has been a fascinating and unusual game due to the piece imbalance. A good game to end the Championship as it was a hard struggle and probably summed up the tournament for me when I had to grind out several positions to try and win games. The only frustration for me was failing to win as Black against Burrige where he was able to play down a drawing line and I couldn't find a way to prevent it. However, he is entitled to look for the draw and it is up to me to find ways of complicating the position to give me winning chances. Failing to win this game probably cost me a chance of sharing the title. At least this time I am not congratulating you on winning the title by conceding!!"

½-½



SCO/C2012, Scottish CCA Championship 2012/13 New

TD Maxwell, Alistair

Rated		1	1	2	2	3	3	4	4	5	5	6	6	Score	Wins	SB	RG	Place
1	SCO 620345 IM Mackintosh, Iain	2395		½	½	1	½	1	1	1	1	1	1	8.5	7	31.5	0	1
2	SCO 620529 Montgomery, Robert S.	2286	½	½		1	½	1	1	1	1	1	½	8	6	31.5	0	2
3	SCO 620426 Cumming, David R.	2294	½	0	½	0		1	1	1	1	1	1	7	6	21.25	0	3
4	ENG 620577 Price, Derek	2047	0	0	0	0	0	0		1	1	1	1	4	4	5	0	4
5	SCO 620410 Goodwin, Brian J.	2020	0	0	0	0	0	0	0		½	1		1.5	1	1.5	0	5
6	SCO 620635 Burrige, Raymond John	1797	0	0	½	0	0	0	0	0	½			1	0	4.75	0	6

Next, a tie from this season's Webserver League. Another unbalanced position - it looks as though White should be fine with 2 rooks for queen but it proves to be very difficult to neutralise Black's initiative against the king.

Sargent, John M (2203)

Bell, Alan D (2399)

SCCA Webserver League 2013

Bogo-Indian [E11]

[Notes by Alan Bell]

1.d4	e6
2.c4	Bb4+
3.Bd2	Qe7
4.Nc3	Nf6
5.e3	b6
6.Nf3	Bb7
7.Bd3	0-0
8.0-0	d6



9.Ne2

A new move but not very good. Black usually has to give up the bishop pair to complete development. 9.a3 Bxc3 10.Bxc3 Nbd7 11.Re1 Be4 12.b4 c5= Bobotsov v Polugaevsky 196]

9...	Bxd2
10.Nxd2	c5
11.Rc1	Nc6
12.Qa4	Rac8
13.Rfd1	h6
14.a3	cxd4
15.exd4	d5

16.c5

Black's position is easier to play. 16.cxd5 Nxd5 may be best but White has to passively defend an isolated queen pawn. The line played hopes for activity.

16...	bxc5
17.dxc5	Ne5
18.Bb1	Rxc5
18...Rfd8	19.Qd4= (19.Qxa7 Ra8
20.Qb6 Ba6	21.Nd4 Rdb8±)
19.Qxa7	Nc4
20.b4	Rc7
21.Nxc4	dx4
22.Qd4	Ra8

23.Nc3

Optically White looks ok but he has little prospect of pushing the queenside pawns whereas Black can make good use of the d5 square to line up bishop and queen on the long diagonal with pressure e.g. 23.Qe3 Rcc8 24.Qg3 Bd5 25.h3 Qb7 Rather than sit passively White goes for complications.

23... Rxa3

24.Nb5

24.Qd8+ Ne8 25.Qxe7 Rxe7 26.Rd4 Rb3 27.Rxc4 Rc7 28.Rxc7 Nxc7 and White is suffering though may be able to hang on.

24... Rd7

25.Nxa3

25.Qxc4 Ra4 26.Qc5 Rxb4µ; 25.Qxd7 Nxd7 26.Nxa3 Qg5 27.g3 Ne5→

25... Rxd4

26.Rxd4 c3



So White has 2 rooks for the queen but Black is able to generate threats against the king. At first I thought White would gradually be able to neutralise the pressure but I did not find a significant improvement.

27.Rxc3

27.Nb5 Ne8 28.h4 e5 29.Re1 Bxg2 30.Kxg2 Qb7+ 31.f3 Qxb5 32.Rd8 Kf8 33.Bd3 Qb6 34.Rc8 Qb7±

27... Nd5

28.Rcc4 g5

29.g3

A big decision as it weakens the kingside but otherwise the knight lands on f4.

29... Qf6

30.Rd3

30.Be4 Nc3 31.Bxb7 Ne2+ 32.Kg2 Nxd4 33.h3 Kg7 and Black should be able to nurse this home.

30... Qb2

31.b5 Qe2

32.Rc1 Nf6

33.Re3 Qh5



... and the threat of Ng4 forces a further weakness, this time fatal.

34.f3 Bxf3

35.Rc2 Bb7

36.Rd2 Qg4

37.Bc2 Qb4

38.Rdd3 Ng4

39.Re2 Qc5+

40.Kf1 Kg7

And there is no longer any way to keep out the Black pieces - further material losses will follow so White resigned. For example: 40...Kg7 41.h3 Qf5+ 42.Ke1 Ne5 43.Rde3 Nf3+ 44.Kf2 Qxh3 45.Rxf3 Bxf3 46.Kxf3 Qf1+ 47.Ke3 Qc1+ 48.Kf2 Qxa3]

0-1



Derek Price has been setting the pace in this year's Premier sections. In this game from section A,, he pressurises Ian Jamieson into conceding the 7th rank.

Price, Derek (2082)

Jamieson, Ian M (2009)

[D05]

SCCA Premier A 2013

Colle System [D05]

[Notes by Iain Mackintosh]

1.d4	e6
2.Nf3	c5
3.e3	d5
4.b3	Nc6
5.Bd3	Nf6
6.0-0	b6
7.Bb2	Bb7
8.Nbd2	Bd6
9.Ne5	0-0
10.a3	Rc8
11.f4	Ne7
12.Qe2	Ne4
13.Nxe4	dx4
14.Bc4	cx4
15.ex4	Nf5
16.a4	

Up to here, the line has followed recent GM play, but now Ian diverges.

16... Qc7N
 [A] 16...Bxe5 17.dxe5 Qc7 18.Ba3 Rfd8 19.Rad1 h6 20.c3 a6 21.Bb4 Qc6 22.Rxd8+ Rxd8 23.Rd1 Rxd1+ 24.Qxd1 e3 25.Qc2 Nh4 26.Bf1 Qd5 27.Qd3 a5 28.Qxd5 Bxd5 29.Be7 Ng6 30.Bd8 Nxf4 31.Bb5 Bxb3 32.Bxb6 Ng6 33.Bxa5 Nxe5 34.Bb6 Nc4 35.a5 f5 36.Bc7 Na3 37.Be2 Bd5 38.a6 Nc4 39.Bf3 1-0
 Sandipan,C (2595)-Ganguly,S (2633)/Dubai 2012/CBM 148 Extra;

[B] 16...Qe7 17.Ng4 Rc7 18.g3 Rfc8 19.c3 Rd8 20.Nf2 e3 21.Ng4 Rxc4 22.bxc4 Ba8 23.Rad1 Qb7 24.d5 Be5 25.Kg2 exd5 26.cxd5 Rxd5 27.Kh3 Qc8 28.Rxd5 Bxd5 29.c4 Be6 30.Kg2 Nh4+ 31.gxh4 Bxg4 32.Qd3 Bh3+ 33.Kf3 Qg4+ 0-1
 Cori Tello,J (2496)-Tomashevsky,E (2701)/Khanty-Mansiysk 2010/CBM 139



20.a5!
 Derek has the balance of forces on the q-side, and starts to put pressure on Black's b6.

20... Rb8
 20...Bxe5 21.fxe5 (21.dxe5? Qc5+ 22.Kh1 bxa5) 21...Qg5 looks a fair try for Black.

21.axb6 axb6
22.Ba6 Ba8
23.Bb5 Qd8
24.Nc4 Be7
25.Ra6 Rcc8
26.Rfa1 Nd6
27.Nxd6 Bxd6
28.g3 Bb7
29.Ra7



29... Ba8?
 A mistake after previous stout defence. 29...Qc7 denies White access to the 7th rank.

30.Rd7! Qf8
31.Raa7 Rd8
32.Rxf7 Qxf7
33.Rxf7 Kxf7
34.Qh5+ Kg8
35.Bc4 Re8
36.Qf5

With both e-pawns doomed, Black calls time.

1-0



Giving Derek Price a run for his money in section B is Eoin Campbell, a man with a sharp eye for a tactical surprise.

Campbell, Eoin S (1800)
Longden, Richard A (1727)
 SCCA Premier B 2013
 Queen's Gambit Accepted [D20]
[Notes by Iain Mackintosh]

1.d4 d5
2.c4 dxc4
3.e4 b5
4.a4 c6
5.axb5 cxb5
6.Nc3 Bd7

7.d5
 7.Nf3 is more often seen in master play, but the immediate d-pawn advance is the sharper line.

7... a5
8.Nf3 e6

The game is pretty much off the beaten track now.

9.d6
 9.dxe6 Bxe6 (9...fxe6 10.Nd4 Nf6 11.Ndxb5±) 10.Qxd8+ Kxd8 11.Bf4± also looks good for White.

9... Na6
10.e5 Nc5

11.Be3
 Every developing White move increases the pressure.

11... Nb3?

Richard tries for counterplay, but this hands White a tactical opportunity.

11...Rc8 is more solid for Black.

12.Nxb5 Bxb5



13.Qxb3! cxb3
14.Bxb5+ Qd7
15.Bxd7+ Kxd7

Material is level, but the Black k-side is corralled.

16.0-0 f6

17.Rfd1 h5?!
 Not the best, but there are no good moves for Black here.

18.Rac1! Rb8

19.Rc7+ Kd8

20.Nd4 Ke8

21.Nxe6
 21.d7+ and; 21.Nc6 both lead to mate also.

21... Rd8

22.Nxd8 Kxd8

23.d7 Ne7



24.Bb6
 Eoin finishes clinically.

1-0



This game was completed before the official start date. David Cumming swithers over what Houdini is telling him, but finally discovers that unforced errors are more powerful...

Cvack, Rudolf (2266)
Cumming, David. R. (2274)
 2nd Thor Lovholt Memorial, 2013
 Sicilian, Moscow Variation [B52]
[Notes by David Cumming]

1.e4 c5
2.Nf3 d6
3.Bb5+
 Sicilian, Moscow Variation.
3...Bd7
4.Bxd7+ Qxd7
5.c4 Nf6
6.Nc3 g6
7.d4 cxd4
8.Nxd4 Bg7
9.f3 0-0
10.Be3 Nc6

10...a6 11.Rc1 Rc8 12.b3 Qd8
 13.Qd2 Nc6 14.Nde2 Rab8 15.0-0
 Qa5 16.Rfd1 b5 17.Nd5 Qxd2
 18.Rxd2 Nxd5 19.cxd5 Nb4
 20.Rxc8+ Rxc8 21.Kf2 Nc2 22.Bb6
 Kf8 23.Nf4 Na3 24.Ne2 Ke8 25.Ke1
 Macieja,B (2813)-Damljanovic,B
 (2625)/Vrsac 2006/OM 2.04/1-0
 (58); RR 10...Rc8 11.b3 e6 12.Rc1
 d5 13.e5 Ne8 14.cxd5 exd5 15.f4
 Nc6 16.0-0 Nc7 17.Nxc6 bxc6
 18.Ne4 Ne8 19.Nc5 Qe7 20.Nd3
 Qe6 21.Qf3 a5 22.Nc5 Qe7 23.Bf2
 Rab8 24.Qh3 f5 25.Qc3 Adams,M
 (2706)-Williams,S
 (2511)/Canterbury 2010/OM 2.04/1-0



11.b3N

This looked a shade loosening but Houdini's alarm bells were not ringing, White is weak on the long dark-squared diagonal, but it's blocked with a fair bit of "wood" and the pawn on c4 is supported, thus maintaining the Maroczy Bind type position for White. [RR 11.Nde2 e6 (RR 11...a6 12.0-0 Qc7 13.Qd2 Rab8 14.Rfc1 e6 15.Nd5 exd5 16.cxd5 Qa5 17.dxc6 Qxd2 18.Bxd2 bxc6 19.Rab1 Rfc8 20.Bc3 Ne8 21.Kf2 Kf8 22.Rc2 Ke7 23.Rd1 Bxc3 24.Nxc3 Nc7 25.Ke3 a5 26.Rdc1 Peptan,C (2407)-Zdebskaja,N (2326)/Kusadasi TUR 2006/OM 2.04/1-0 (79)) 12.0-0 Rfd8 13.Qd2 d5 14.cxd5 exd5 15.Rad1 dxe4 16.Qxd7 Rxd7 17.Rxd7 Nxd7 18.Nxe4 Re8 19.Bf2 Nf6 20.N2c3 Nxe4 21.Nxe4 f5 22.Nd6 Re2

23.Rb1 Bxb2 24.Nxb7 Ba3 25.Ra1 Be7 Jakslund,T (2297)-Pedersen,N (2466)/Aalborg 2007/OM 2.04/0-1 (73); RR 11.Qd2 a6 12.a4 Na5 13.Qe2 Rac8 14.b3 e5 15.Nc2 Nxb3 16.Rd1 Na5 17.c5 Qe6 18.Rxd6 Qc4 19.Qd3 b6 20.Ke2 Qxd3+ 21.Rxd3 bxc5 22.Rd6 Nc6 23.Na3 Nd4+ 24.Kd3 Rfd8 25.Rxd8+ Rxd8 Ong Way,J-Chua Zheng Yuan,T (2104)/Da Nang 2008/OM 2.04/0-1 (59)]

11... a6
12.Qd3= Ne5!?

If memory serves, I think Houdini wanted to play ...Qd8 at this point, whereas I considered it better to try and provoke the loosening f4, and especially if it's preceded by h3 (so as to stop ...N(e)g4, harassing the dark-squared bishop and pressurising the kingside dark squares still further), White loosens his kingside dark squares as well.

13.Qe2 Rac8
14.0-0 e6

Both defending d5 against a Knight invasion and preparing to push ...d5 at some point myself.

15.Rac1 Rfd8

16.Bg5 h6

17.Be3 Kh7

18.h3

Obviously preparing the f4 pawn push, ejecting the knight from e5, and I didn't want to plant it on c6 so I made room on d7 for it.

18... Qc7

19.f4 Ned7

20.Qf3 Qa5

Probing the queenside dark squares.

21.Rfd1 e5

22.Nde2



22... b5!

For a long while Houdini didn't like this thematic break, and recommended ...e5xf4 instead, but I wasn't keen on this as yet. [Houdini 2.0b w32: 22...exf4 23.Nxf4 0.27/20]

23.cxb5 axb5

24.Rxd6 exf4

25.Qxf4 Re8

26.a4 bxa4

27.bxa4 Ne5

Back to e5, blockading the isolated e-pawn.

28.Kh1 Kg8

29.Bg1 Nh5

30.Qf2 Qb4!?

Putting the question to the Rd6.

31.Bh2??

Blundering away the rook from an otherwise equal position.

31... Qxd6

0-1



We started with the SCCA Championship 2012-13, and here's another game from that event to finish. David ended in 3rd place.

Goodwin, Brian. J. (2020)

Cumming, David. R. (2298)

Ruy Lopez, Schliemann [C63]

SCCA Championship 2012-13

[Notes by David Cumming]

1.e4 e5

2.Nf3 Nc6

3.Bb5 f5

4.Nc3 fxe4

5.Nxe4 Nf6

6.Qe2 d5

7.Neg5 Bd6

8.Nxe5 0-0

9.Nxc6 bxc6

10.Bxc6 Rb8

11.d3 Rb6

12.Ba4 Bc5

12...Rb4 13.Bb3 Re8 14.Be3 Rxb3

15.axb3 d4 16.Nf3 dxe3 17.fxe3 Bg4

18.0-0 Nd5 19.e4 Bc5+ 20.Kh1 Ne3

21.Rf2 Rf8 22.b4 Bb6 23.d4 Bxd4

24.Ra3 Nxc2 25.Qc4+ Kh8 26.Rxc2

Bb6 27.Rd3 Aalderink,G (2099)-

Law,S (1588)/LSS 2008/OM Corr/1-0

13.0-0 Ng4

14.Bb3 Rg6N

[RR 14...Bxf2+ 15.Kh1 Rh6 16.Nf3

Re6 17.Rxf2 Rxe2 18.Rxe2 h6

19.Bd2 c5 20.Rae1 Kh7 21.h3 Nf6

22.c3 Bf5 23.Ne5 Qb6 24.Bf4 d4

25.Rf1 Nd7 26.Nxd7 Bxd7 27.Rff2

dx3 28.bxc3 Qa5 29.Bd2 Oliver,N-

Di Marino,M/BCCA 2002/OM

2.04/0-1 (51) RR 29...Rxf2 30.Rxf2

Qb6 31.d4 cxd4 32.cxd4 Be6

33.Bxe6 Qxe6 34.Bc3 Qc4 35.Rc2

Kg6 36.Kh2 Kf5 37.Rf2+ Ke4

38.Ba1 h5 39.d5 Qc7+ 40.Kg1 g5

41.d6 Qxd6 42.Re2+ Kd3 43.Be5

Qc5+ 44.Kf1 Oliver,N-Di
Marino,M/BCCA 2002/OM Corr/0-
1 (51)]



15.Ne4?!

Here Brian tries to cover everything by taking advantage of the fact that my pawn on d5 is pinned to my king. This fails because all of my pieces are pointing at the White kingside and are poised to strike, whereas Brian's queenside is undeveloped. At this stage of the game, I am essentially material up, and have a very strong initiative. So, a sacrifice is called for from Black...

15... Nxb2!±

16.Kxh2?!-+

Accepting the knight sacrifice was unwise, and concedes a fully winning advantage for Black.

16... Bg4!

Here I could have played instead the tempo gainer ...Qh4+, which simply would have transposed to the actual game. The point to playing 16...Bg4! first was to give White the opportunity to blunder with 17.f3?!, when the immediate ...Qh4 is mate.

17.Qe1 Qh4+

18.Kg1 Bf3

19.Bxd5+

The concession that I had to make for my winning initiative. If I had the time I would have played a prophylactic ...c6 to protect the d-pawn before initiating my attack. However, I did not have the time for this so I had to do without this move, which does grant Brian some counterplay, albeit ultimately futile.

19... Kh8

20.Bg5 Qg4

21.Ng3 Qxg3

22.Bxf3 Qxg5

22...Rxc5 was an inferior but probably still winning capture for Black, because White is able to take advantage of the fact that the bishop is pinned to the c5-f2 diagonal by tactical means, viz... 23.Qe7 Qf4 24.Qe4 Qxf3 25.Qxf3 Rxf3 26.d4 Bxd4 27.Rad1 Bc5 28.Rd8+ Rf8

29.Rxf8+ Bxf8 30.Re1 Kg8 31.g3
Kf7 32.Kg2 Bd6 33.Re4 Rd5 34.Re2
Ra5 35.a3 Re5 36.Kf1 Rb5 37.b4 c5]
23.Qe4



White defends himself by supporting his bishop and simultaneously threatening to block Black's attack down the g-file with 24.Qg4, so I moved my queen back to g3 so that in this eventuality I would capture on g4 with my rook.

23... Qg3

24.Qe2 Rh6

25.Bh5 g6

26.d4 Bxd4

27.Qd2 Qh4



White's position is hopeless. Despite on his previous move attacking both the bishop on d4 and the rook on h6, I only really had to defend the bishop with my queen in the manner played. Should then White take the rook then he is mated in short order, albeit he is not long for this world anyway...

27...Qh4 28.Qxh6 Rxf2 29.Qxh7+
Kxh7 30.Bxg6+ Kxg6 31.Rxf2
Qxf2+ 32.Kh1 Qh4#

0-1



New ChessBase DVD

Attacking with the Italian Game and the Ruy Lopez

By Sergei Tiviakov



The purpose of this DVD is to teach players how to conduct the attack on the black king using different methods.

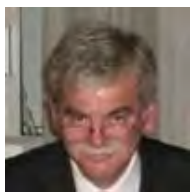
Although the Italian Game and the Ruy Lopez are mostly positional openings, it is very often possible to make use of attacking methods of play.

This DVD is based mostly on the personal experience and games of the author, thus making it a unique chess product. The methods described in the DVD are the results of the life-long experience of the author who has played the Ruy Lopez and the Italian Game from his childhood and has scored with it many, many wins, including some against the world's strongest players.

The DVD is divided into 4 chapters according to those attacking methods which have given and still are giving the author the best results. Also several other games by other players (such as A. Karpov, for example) have been added and explained.

To complement the instruction, a database is provided which contains all the games which the author has played in the Italian Game and the Ruy Lopez since 1986.

A huge number of these games have never been published before.



ICCF Congress – Kraków, Poland

By George Pyrich

The 2013 ICCF Congress, hosted by the Polish CC Federation celebrating its 80th Anniversary, was held in Kraków from 21st to 26th July 2013 and marked ICCF's fourth visit to Poland, previous visits having been made in 1973 (Warsaw), 1983 (Poznan) and 1993 (Gdansk).



Wawel Castle

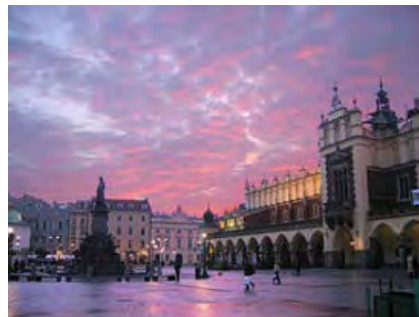
The event was held in the Park Inn Hotel, near the city centre and very near to the Vistula River which flows through the city and then all the way to the Baltic port of Gdansk, almost the entire length of the country. Those attending the Congress were able to look across to the other side of the river to enjoy a splendid view of the magnificent Wawel castle, some 700 feet high, which dates back to the 9th century and was the burial place of the ancient kings of Poland.

Kraków (Eng. Cracow), Poland's second city and former capital, dates back to the 7th century and has long been one of the leading centres of Polish academic, cultural and artistic life and nowadays is capital of the Małopolska Voivodeship (lesser Poland Region). The historic Old Town in the city centre is a UNESCO World Heritage site and is only one of many places of interest in the city.

Prior to the Opening the Congress, the President of the Polish Chess Federation, Tomasz Delega, extended a warm welcome to all those attending before handing over to the ICCF President, Eric Ruch, who acknowledged and thanked the members of the Congress Organising Committee, Tomasz Stefaniak, President of the Polish CC Federation, Mariusz Wojnar, ICCF Delegate for Poland and main Congress Organiser, Barbara Juszewicz, Congress Administrator and Assistant Organiser, and the other members of the Organising Committee. Eric then outlined the many highly significant matters to be considered by the Congress which included key matters of the ICCF Rules and gave a brief summary of the Congress schedule.

Eric then advised that, in the period from December 2009 to December 2012, the number of registered users on the ICCF Server had increased from 8,464 to 12,418 (47%) and that during the same period the number of active players had increased from 4,092 to 4,803 (23%). Thereafter, the ICCF

President, calling the Congress to order, then formally opened the Congress.



Main Square, Kraków Old Town

The congress then noted that, of the total of 91 persons attending the Congress, a total of 42 of ICCF's 56 member federations were represented, 24 of whom provided delegates and 18 others registering representatives by proxy (rather disappointingly 14 members – 25% of ICCF membership – had not even responded to Congress invitations). The main items considered by the Congress were as follows:

Congress Awards

Following the unanimous adoption of the 2012 Congress Minutes, business began with the presentation of numerous awards which included 8 Bertl von Massow medals (5 Gold and 3 Silver) in recognition and appreciation of length of service (15 and 10 years respectively) by various officials to ICCF and traditional engraved silver plates to 2 World Champions (Ulrich Stephan (GER), winner of Final 23, and Fabio Finochario (ITA), winner of Final 25 (who attended in person to accept the award). The winner of World Ch. Final 26, Ron Langewald (NED), was also on hand to receive the Champion's gold medal and certificate. Additionally medals were presented to the winners of the ICCF 12th World Cup (Postal), Matthias Gleichmann (GER), the 11th Africa-Asia Ch., Ugur Tugsavul (TUR), and also the winning teams in ICCF Champions League 4.

ICCF Statutes

A small but nevertheless significant modification, proposed by the English Federation (BFCC), was made to paragraph 13 of the ICCF statutes (Membership) was adopted by a very large majority that this paragraph be amended from "ICCF members are national correspondence chess organisations who are the authorities on national correspondence chess activities in their own countries, and must be full members of FIDE. Only one federation per country is allowed." to "ICCF members are national correspondence chess organisations who are the authorities on national correspondence chess activities in their own countries. Only one federation per country is allowed."

The implication of this change being that it is now no longer necessary for an ICCF member country to also be a full member of FIDE. Following this modification, the Congress, by a very large majority, approved the granting of full ICCF membership status to Cape Verde (who is not a member of FIDE). Several discussions then ensued about the dilemma of recognizing various countries (example of England, Scotland, and Wales were used), but no solutions were presented. *(To my mind it is utterly unthinkable that the independent membership of ICCF of any of these three countries (also full members of FIDE) would ever be seriously questioned).*

The congress also noted with some dismay the public comment made by the FIDE General Secretary in 2012 that "...correspondence chess is simply an aberration of real chess and will never be recognized as a game of real skill". (Confirmation if it was required that FIDE has no real interest in ICCF).

ICCF Executive Board



Andrew Dearnley playing in the Simul.

The congress was pleased to give its unanimous approval to the motion that the English delegate, Andrew Dearnley, be elected to the long vacant position of ICCF Marketing Director. (Andrew has a professional background in marketing and will surely bring his considerable experience and enthusiasm to this long neglected area).

ICCF Finance

In my capacity of ICCF Finance Director I was pleased to report that ICCF had continued to prosper during 2012, posting a surplus of some 22,000 Euros. Thereafter the Congress gave its almost unanimous approval to a number of new measures, not least of which was a proposal to reduce entry fees to almost all ICCF individual events by between 20 and 25% from 1st January 2014 – a similar such reduction from 1st January 2011 resulted in increase of 23% of tournament entries during that year (the SCCA has since approved similar reductions from January 2014 to such fees details of which are listed elsewhere in this issue and also at our web site). Other measures approved by the Congress included very substantial increases to prize funds (from 2,000 to 6,000 Euros) in ICCF World Cup events with, for the first time, prizes to be awarded in Preliminary and Semi-

Final Sections and also similar prize funds being made available in other Cup events including the Veterans World Cup, and a modest increase to the rates of reimbursement paid to ICCF officials attending Congress.

ICCF Server



Austin Lockwood

The ICCF Services Director, Austin Lockwood (WLS), reported on a number of server related matters which included numerous developments throughout the year - the completion of Phase 10 of the previously approved programme of Server Updates, new features (updates) planned for 2013/14 (Phase 11), a review of the Server Source Codes and further developments and improvements to the Server Testing Programme, Helpdesk, Security, Disaster Recovery and Document Archive. The Congress expressed its warm approval of Austin's excellent work and gave its unanimous consent to a new Provisional Testing Allowance and Service Level Agreement.

ICCF Rules

As always, a considerable proportion of the Congress's time (and effort) was devoted to this often contentious area and the main deliberations may be summarised as follows:

(a) The Congress approved that the following provision was added to the Code of Conduct: "Extremely slow play in a clearly lost position is not proper behaviour in CC play, and is subject to a warning from the TD, and will result in disciplinary action if it continues or is repeated in other games."

(b) A proposal submitted by the German Federation that play by e-mail be permitted during periods of server outage was rejected by a large majority. However, the Services Director, Austin Lockwood, provided assurances that in future there will be guarantees that there will be no more than three periods of unavailability exceeding one hour in a seven day period and no periods of unavailability exceeding eight hours – also that ICCF will guarantee that no more than one hour of data will be lost in the case of a catastrophic server failure. The implication of this guarantees are that players cannot expect time to be added, or defaults reversed, because of server unavailability or data loss within the guarantee. However, any appeals or claims in the event of server unavailability or data loss exceeding

the guarantee (to be confirmed by the Services Director, or deputy) should be viewed as being valid.

(c) The Italian Federation submitted a proposal whereby results be recorded on a 3-1-0 basis as used in football in order to seek to discourage the ever increasing proportion of drawn games in ICCF events. The Congress took the view that it would be very difficult to implement such a system at this time, not least because of qualification requirements for ICCF titles, and agreed that consideration of the matter be deferred a year in order to evaluate costs and provide detailed requirements. Consequently the proposal was rejected by a large majority.

(d) A proposal to redefine Server time controls was approved by a large majority and from 1 January 2014 it will become possible for events to have variable allocations of initial time, variable increments and also variable increment frequencies i.e. Fischer clock.

(e) Yet again the Congress rejected a proposal that annual leave be allocated in proportion to the actual playing time in any calendar year e.g. in events starting on 1 July players would be allocated 50% of the annual allowance of 30 days. This proposal has considerable implications for events with fixed end dates – an event scheduled to last say 18 months may encompass 3 calendar years and under the current rules players may have as much as 90 days leave – under the proposal the total leave permitted would be reduced to 45 days (1.5 x 30). The reason for the rejection was the same as before, that players may vary the time of year when they have their main annual holiday (say October one year and August the next). (Unfortunately I was absent at this point and it seems that nobody thought to mention that players should surely be aware of their personal commitments whenever they enter an event).

(f) A proposal to record losses on time (etl's) as defaults was unanimously rejected.

(g) A proposal to forbid conditional moves in all server events was rejected by a large majority.

(h) After lengthy discussion the Congress approved by a narrow majority a proposal to implement the use of Tablebases where appropriate, consequently removing the 50 move Draw Rule. (KQN against KRBN is supposedly a win in 517 moves! – I sincerely hope that no unfortunate TD will ever be required to verify this.)

(i) A proposal that Start Lists for all ICCF tournaments be seeded with the highest rated player in position (1) in each section, lowest rated in last position and with other positions in order of rating, seed position randomized for players of equal rating and Provisional Ratings ordered by rating number with provisional status not affecting seed order was rejected by a large majority.

(j) There was considerable discussion on a proposal submitted by the Finnish Federation that the use of “nodes” (used by postal players to transmit moves in server events) presently permitted in World Ch. Finals and Candidates section be discontinued but no conclusion was reached and no vote was taken.

(k) A proposal submitted by a Working Group set up to examine the structure of the World Championships that the current Rules and arrangements remain unchanged (a new Final every 2 years) was approved by a large majority although it was agreed that the Working Group would continue to monitor and assess these arrangements.

(l) There was also lengthy discussion on the divisive and contentious issue of Special Leave. Up until summer 2011 Special Leave had been awarded at the discretion of Tournament Directors and it was noted that many inconsistencies occurred (some TD's applied the ICCF Rules diligently, sometimes refusing Special Leave, whilst others simply permitted all applications – similarly some players requested Special Leave in one event whilst continuing play in others – additionally the conditions which permitted Special Leave were open to a wide variety of interpretations and consequently abused). In view of these numerous abuses an Office of Special Leave under the leadership of the ICCF General Secretary was set up, removing the responsibility of Tournament Directors and attempting to ensure some consistency. The General Secretary now felt it necessary to advise that he now wished to retire from this role in view of his numerous other obligations and responsibilities and but fortunately a successor, the former Qualifications Commissioner, Neil Limbert (ENG), has recently stepped into the breach and agreed to keep the Office of Special Leave open until events starting before 1 January 2014 are completed.



Delegates are granted special leave to visit Czarotorski Palace Museum Bell Tower

There was a proposal submitted by the General Secretary that events starting after 1 January 2014 Special Leave would no longer be available and that allocations of “normal” Annual Leave would be increased from 30 days to 45 days annually - after lengthy and at times heated discussion this motion was approved by the Congress by a narrow majority. (Unfortunately I was unable to attend much of the discussion and vote on this motion.)

Ratings

The Congress approved by a large majorities motions to increase Provisional Ratings for un-rated players in Olympiad Finals (from 2200 to 2500) and Preliminaries (from 2200 to 2400) and also to use those FIDE Rating Lists (presently FIDE issues new Lists each month) for those players with only FIDE Ratings valid at the same date at which ICCF issues new Lists (quarterly). Another motion, to establish a new Rating System for Chess 960, was also agreed as where plans to input results for old events contained within the old Eloquetry database from 1991

(Ratings Lists prior to this were not stored electronically) into the Server.

Code of Conduct

The Congress reaffirmed the principle that “It is expected that players will decide the moves for themselves. It is unacceptable behaviour to have someone else play your games, (i.e., playing “mirror games” is not acceptable).” but only after a motion submitted by the USA delegate, Leonard Schakel, that specific reference to chess engines be included in this clause was rejected under the principle that “what is not expressly forbidden is permissible”. (*Rather a cop-out although perhaps consistent with the realisation that there is little point in having a Rule which cannot be enforced.*)

Other Items

Several other officials reported on other matters of significant interest. These included the Direct Entry Commissioner, Ian Pheby (ENG), who reported that, despite the overall considerable increase to individual tournament entries during 2012, the number of Direct Entries had decreased by some 8% since the previous year. The Qualifications Commissioner, Neil Limbert (ENG), confirmed the award of 76 new ICCF Titles achieved over the year, unfortunately none from Scotland, and also reported on a number of significant new developments introduced over the year to the ICCF Server, the introductions of “Player Details – Norms Tab”, “Player details – Achievements Tab” and also a “Certificates Tab” whereby Tournament Organisers may now upon completion of events arrange for successful players to be awarded certificates generated by the Server.

ICCF European Zone

A separate meeting of European delegates was convened during the week to consider matters relating specifically to the activities of the European Zone with the main items on the agenda being proposals to restructure the EU zone individual Server and Postal events, linking for the first time, Promotion and Championship events. Following considerable discussion, the following new set-ups, effective from 1 January 2014, were approved:

Server – EU Ch. Open Round (7 players), EU Ch. Preliminaries (11 Players rated 2100 to 2299 or winners of Open Sections), EU Ch. Semi-Finals (13 Players rated 2300 to 2499 or 1st or 2nd places in Preliminaries or minimum of 45% in previous Candidates or 55% in Semi-Finals), EU Ch. Candidates (13 players rated 2500 and above or GM’s or SIM’s over 2400 or IM’s over 2450 or 1st or 2nd in Semi-Finals or minimum of 45% in previous Finals or 55% in Candidates) and EU Ch. Finals (1st, 2nd or 3rd in previous Finals or 1st or 2nd in a Candidates. Open & Preliminary rounds to start continuously, Semi-Finals and Candidates to start annually in March (Semi-Finals in March and Candidates in September and Finals starting once every 2 years.

Postal – EU Ch. Open Round (4 Players, double-round), EU Ch. Semi-Finals (6 Players, double-round for those rated 2100 or over or winners of Open Sections) and EU Ch. SCCA Magazine 123

Finals (13 Players but may be more for those 1st, 2nd or 3rd in previous Finals or 1st or 2nd in Semi-Finals, events starting at organisers’ discretion).

It may be noted that the previous Higher and Master Classes have been removed from both cycles although with Semi-Finals replacing the previous Master Class and the new Candidates in Server events replacing the previous Semi-Finals. Following official announcement from EU Zone President, conformation regarding the new Postal events is now available on our SCCA web site but official announcement for new Server events is still awaited.

Future Congresses

The congress confirmed the time-table for the 2014 Congress in Sydney, Australia (11 to 17 October) and also noted expressions of interest from the Norwegian Federation to host the Congress in 2016 and the Italian Federation in 2017. The Congress also noted that, as yet, no interest had been expressed in respect of the 2015 Congress but confirmed that, as this is a scheduled Election year, this will be held in Europe.

Congress Activities

During the week there was the usual programme of chess activities – 12 players took on local FIDE GM Kamil Miton in a Simultaneous Display where only Ukrainian Yury Koshmak emerged victorious and Neil Limbert (ENG) managed to draw.



Webserver designer Martin Bennedik contests with GM Kamil Miton in the Simul.

An ICCF team was able to end a sequence of losses in the traditional match against local Congress hosts, winning 8½-5½.



Who said the CC guys can't play OTB?!

A field of 20 participated the customary Blitz Tournament won jointly by ICCF GM and FIDE IM Dmitry Lybin (BLR) - also composer of the ICCF Anthem! and ICCF SIM

and FIDE IM Virginijus Dambrauskas. (*I didn't take part in any of the chess events.*)



Former ICCF World Champion Fritz Baumbach (GER) has the Black pieces in the Blitz event.

There were also some social activities and for the customary Congress Excursion the Congress participants were presented with a choice between the nearby Auschwitz/Birkenau complex and the World Heritage site Wieliczka Salt Mine (Polish: Kopalnia soli Wieliczka), which lies within the Kraków metropolitan area.



George and Catherine Pyrich make the descent into the Wieliczka Salt Mine.

During the week shorter excursions were provided for those not participating directly in Congress business to the local Wawel castle, the city's Old Town and also the historical district of Kazimierz, which from the 14th century until the Holocaust had been home of the city's Jewish community and for a long time an independent town within the city with its own municipal charter and laws.



The historical district of Kazimierz.

Also nearby was the war-time factory (nowadays a museum) operated by Oscar Schindler.



An exhibit in the Oscar Schindler factory/museum.

All in all, this was a truly memorable Congress held in a beautiful modern yet historic city with excellent facilities provided by gracious and generous hosts.





International Update

By George Pyrich

5th ICCF Champions League

CL/2012/C1, Champions League 2012 C1

TD Vugt, Wim H. van

		1	2	3	4	5	6	7	8	9	10	11	12	13	Score	%	+/-	Team results	FG	RG	Place
1	Chess Club Travertin 2	2337	2	2	1.5	2.5	2	1	1.5	2.5	4	2.5	3	3.5	28	62	11	15	45	3	1
2	Golden King	2157	2	2.5	1	2	1.5	1	1.5	2.5	3	3	2	2.5	24.5	56	6	13	43	5	2
3	Grupo de Xadrez do Porto B	2052	2	1.5	0.5	2	2	2	1.5	1.5	2.5	2.5	3	2.5	23.5	57	6	12	41	7	3
4	Black Sea	2337	1.5	2	0.5	2	1.5	0.5	2	2.5	3	3	2	2.5	23	69	13	12	33	15	4
5	All the King's Men	2236	1.5	2	2	1	2	0	2.5	3	2	2.5	2.5	1	22	52	2	12	42	6	5
6	Old Friends Team	2439	2	1.5	1	1.5	2	1	1	2	2.5	2.5	2	3	22	59	7	10	37	11	6
7	Fenix I	2200	1	3	2	0.5	1	1	1.5	1	3	3.5	2	1	20.5	70	12	8	29	19	7
8	DEMC 2	2266	2.5	1.5	1.5	0	1.5	1	0.5	2.5	2	2.5	2.5	2	20	51	1	10	39	9	8
9	The Lewis Chessmen	2293	1.5	1.5	1.5	1.5	1	1	1	1.5	3	1.5	2	2.5	19.5	47	-2	5	41	7	9
10	Latvian Knights	2068	0	1	1.5	1	2	1.5	1	2	1	3.5	1	1.5	17	36	-13	4	47	1	10
11	BCCA Rooks	2198	1.5	1	1.5	1	1.5	0.5	0.5	1.5	1.5	0.5	2	1.5	14.5	33	-14	1	43	5	11
12	CCI 1	2247	1	1	1	0	1.5	1	0	1.5	1	3	1	2	14	35	-11	3	39	9	12
13	Czech Black & White Team	2156	0.5	0.5	0.5	0.5	1	0	0	1	0.5	1.5	0.5	1	7.5	22	-18	0	33	15	13

CL/2012/C7, Champions League 2012 C7

TD Kracht, Jörg (IA)

		1	2	3	4	5	6	7	8	9	10	11	12	13	Score	%	+/-	Team results	FG	RG	Place
1	Zugzwang Bocholt 1	2266	1.5	2	2	2.5	2	2	2	2.5	2.5	2.5	2.5	3.5	27.5	63	12	17	43	5	1
2	Vityaz 2012	2213	1.5	1.5	2.5	1	2	2	1.5	2	2	2	3.5	4	25.5	63	11	11	40	8	2
3	Chess.com - Russia	2303	2	1.5	1.5	2.5	1.5	2	1.5	2.5	2.5	1.5	3	3	25	64	11	12	39	9	3
4	Anunnaki IV	2193	1	1.5	1.5	1	2	3	1	2	2	2	3	3	23	58	7	10	39	9	4
5	CSM Cluj Napoca 1	2344	1.5	1	0.5	1	2.5	2.5	0.5	2	3	1	2	3.5	21	56	5	10	37	11	5
6	Torres Quevedo	2248	1	1	1.5	2	1.5	2	2.5	3	2	1	2	1.5	21	51	1	8	41	7	6
7	Brazilian Chessfriends	2387	1	2	1	1	1.5	2	1.5	2.5	1	1.5	2.5	3	20.5	48	-1	8	42	6	7
8	Le Palamède	2327	2	1.5	1.5	1	0.5	1.5	1.5	1	2	1	2.5	3	19	55	4	6	34	14	8
9	DEMC 3	2138	1.5	2	1.5	2	1	1	1.5	1	2	1	1.5	2.5	18.5	45	-4	5	41	7	9
10	A.D.A. MÓSTOLES	2191	0.5	1	1.5	2	1	1	2	1	1	0.5	3	2.5	17	44	-4	6	38	10	10
11	Scottish Claymores	2315	1.5	1	0.5	1	1	2	1.5	1	2	0.5	2	3	17	54	3	5	31	17	11
12	Kylee	2167	1.5	0.5	1	0	2	2	0.5	1.5	1.5	1	0	3	14.5	33	-14	4	43	5	12
13	Rochade 5171 Chessmates	2015	0.5	0	0	0	0.5	0.5	1	0	0.5	0.5	0	1	4.5	11	-31	0	40	8	13

Unfortunately the Lewis Chessmen in Division C1 have slipped down considerably since last time from 5th to 9th place in the 13 team section. With only 8 games remaining the team can hope for some improvement but prospects of promotion have all but disappeared.

However the Scottish Claymores in Division C7 should not be written off just yet as, although the team holds only 8th place on percentage scores, the Section is very close and, with 18 games yet to complete, more than any other team, can still mount a late charge for promotion.

Current Friendly Internationals

Start	Boards	Opponents	Mode	For	Against	Void	Result
Sep 2013	22	Venezuela					
May 2013	22	Spain	Server	5½	10½		
Apr 2013	22	Germany	Server	5	15		
Dec 2012	20	Australia	Server	13	20		
Oct 2012	20	Peru	Server	15	13		
Oct 2012	24	Denmark	Server	23½	15½		
May 2012	20	Italy	Server	8½	31½		loss

Play started recently with a new match over 22 boards against new ICCF members Venezuela. Another new match is planned against France but is now unlikely to start until February 2014. Our numerous other matches continue.

Europa Postal Cup

EU/PC/pr2, European Postal Cup - Preliminary Group 2

TD Hömske, Markus (IA)

			1	2	3	4	5	6	7	8	Score	%	+/-	Team results	FG	RG	Place	
1		A. D. Scacchi Rocca Priora	2247	█	2	2	3	3	2.5	4	4	20.5	81	16	12	25	3	1
2		Veterans	2310	1	█	2.5	3.5	3	2.5	4	3.5	20	74	13	12	27	1	2
3		Germany B	2159	1	1.5	█	2.5	2	2	4	4	17	68	9	8	25	3	3
4		Scottish Claymores	2110	1	0.5	1.5	█	2.5	3	4	4	16.5	58	5	8	28	0	4
5		CASPA-ROV	2039	1	1	1	1.5	█	3	4	4	15.5	57	4	6	27	1	5
6		Dutchess	2076	0.5	1.5	1	1	1	█	4	4	13	50	0	4	26	2	6
7		White Rose Exiles	1879	0	0	0	0	0	0	█	3	3	11	-21	2	27	1	7
8		Arc-en-ciel / Rainbow / Regnbåge	1854	0	0.5	0	0	0	0	0	█	0.5	1	-26	0	27	1	8

Our team has now completed all its games and, as anticipated last time, has been overtaken by the Germany "B" team to finish in 4th place and so missing out on qualification.

9th European Team Championship

EU/TC9/sf2, 9th European Team Championship - Semifinal 2

TD Glaser, Karel (IA)

			1	2	3	4	5	6	7	8	9	10	11	12	Score	%	+/-	Team results	FG	RG	Place	
1		Russia	2350	█	4.5	4.5	5	5.5	4	6.5	5	5.5	7	5.5	5	58	66	29	21	87	1	1
2		Austria	2407	3.5	█	4.5	4	4.5	4.5	4	4.5	4	5	4.5	4.5	47.5	53	7	17	88	0	2
3		Romania	2420	2.5	3.5	█	4	4.5	4	5	5	4.5	5.5	4.5	4.5	47.5	54	8	16	87	1	3
4		Lithuania	2488	3	4	4	█	3.5	4.5	4.5	4	5	5.5	4.5	4.5	47	54	7	15	87	1	4
5		Finland	2448	2.5	3.5	3.5	3.5	█	4	4	4	5.5	4	4.5	5.5	44.5	51	2	10	87	1	5
6		Switzerland	2387	4	3.5	4	3.5	4	█	4	4.5	4	4	3.5	5	44	50	0	10	88	0	6
7		Czech Republic	2429	1.5	4	3	3.5	4	4	█	4.5	4.5	4.5	4	4.5	42	48	-3	12	87	1	7
8		Belarus	2291	3	3.5	3	4	4	3.5	3.5	█	3.5	3.5	5	4.5	41	46	-6	6	88	0	8
9		Spain	2412	2.5	4	3.5	3	2.5	4	3.5	4.5	█	2.5	5	4	39	44	-10	7	88	0	9
10		Scotland	2358	1	3	2.5	2.5	4	4	3.5	4.5	5.5	█	4.5	3.5	38.5	43	-11	8	88	0	10
11		Poland	2452	2.5	3.5	3.5	3.5	3.5	4.5	3	3	3	3.5	█	4.5	38	43	-11	4	87	1	11
12		Luxembourg	2311	3	3.5	3.5	3.5	2.5	3	3.5	3.5	4	4.5	3.5	█	38	43	-12	3	88	0	12

Spain has overtaken us and Poland is now level, with one game remaining. Happily, Luxembourg is assured of the wooden spoon as they have completed all their games.

20th Olympiad Preliminaries

CCO20/S2, ICCF Olympiad 20 Preliminaries - Section 02

TD Pheby, Ian M. (IA)

			1	2	3	4	5	6	7	8	9	Score	%	+/-	Team results	FG	RG	Place
1	Switzerland	2428		3	1.5	3	2.5	1.5	2	0.5	2	16	59	5	2	27	21	1
2	Ukraine	2465	1		2.5	1.5	2.5	1.5	1.5	3	0.5	14	51	1	1	27	21	2
3	Spain	2440	1.5	2.5		2	1.5	1	2.5	2	0.5	13.5	54	2	0	25	23	3
4	France	2432	2	1.5	2		1.5	2	1.5	2	0	12.5	52	1	0	24	24	4
5	Luxembourg	2272	1.5	1.5	1.5	1.5		1	1	1.5	1.5	11	43	-3	0	25	23	5
6	Norway	2404	1.5	1.5	1	2	0		2	1.5	1.5	11	47	-1	0	23	25	6
7	Scotland	2379	1	1.5	0.5	0.5	2	2		1.5	1.5	10.5	43	-3	0	24	24	7
8	Hong Kong	2244	0.5	1	2	1	1.5	1.5	1.5		1	10	43	-3	0	23	25	8
9	Germany	2518	2	0.5	0.5	0	2.5	1.5	1.5	1		9.5	52	1	0	18	30	9

Our team has now slipped a little down to 7th place in the 9 team Section as the event approaches the half way mark with almost 50% of the games completed. However the score table is very close with little between all the teams and only a couple of wins could see the team's fortunes improve dramatically.

2nd Thor Løvholt Memorial Team Tournament

MT-Løvholt2/sf2, 2nd Thor Løvholt Team Tournament Semi-Final 2

TD Dearnley, Andrew (IA)

			1	2	3	4	5	6	7	8	9	10	Score	%	+/-	Team results	FG	RG	Place
1	Scotland	2083		0.5	0	0	1	0	0	0	0	0	1.5	50	0	0	3	51	1
2	Belgium	2045	0.5		0	0.5	0.5	0	0	0	0	0	1.5	50	0	0	3	51	2
3	Ukraine	2200	1	0		0	0	0	0	0	0	0	1	100	1	0	1	53	3
4	Austria	2226	0	0.5	0		0	0	0	0	0	0	0.5	50	0	0	1	53	4
5	Czech Republic	2168	0	0.5	0	0		0	0	0	0	0	0.5	25	-1	0	2	52	4
6	Latvia	2138	0	0	0	0	0		0	0	0	0	0	0	0	0	0	54	6
7	Netherlands	2229	0	0	0	0	0	0		0	0	0	0	0	0	0	0	54	6
8	Slovenia	2216	0	0	0	0	0	0	0		0	0	0	0	0	0	0	54	6
9	Lithuania	2196	0	0	0	0	0	0	0	0		0	0	0	0	0	0	54	6
10	Sweden	2213	0	0	0	0	0	0	0	0	0		0	0	0	0	0	54	6

Play kicked off on 1st September in this new event where our team seeks to redeem itself after an almost disastrous showing in the first such event. Drawn in Preliminary Section 2 against opposition from Slovenia, Latvia, Ukraine, Lithuania, Belgium, Austria, Czech Republic, Sweden and the Netherlands the flag is being carried by our team of Gordon Anderson, David Cumming, Derek Price, Ian Marshall, Eoin Campbell and Colin MacGregor. A score of 50% might be considered to be a substantial improvement upon last time and already the team is line to achieve this with a win, draw and a loss in the 3 games already completed.

ICCF World Cup 20

Entries close for this new event, organised by the Russian CCA on 1st November with play scheduled to start on 30th November. We have already submitted a substantial number of entries – on the basis that it is necessary only to win only 1 section, Colin Beveridge, Charles O'Neill McAleenan, Derek Coope, Geoff Lloyd, Raymond Burrige, George Pyrich and Arthur Knox have submitted only single entries whilst David Cumming, choosing instead to spread his bets, has entered 3 sections.

ICCF Veterans World Cup 6

As scheduled play began in this on 1st September with a total of 12 SCCA entries – Alan Borwell (3), Derek Price (2) and Peter Bennett, Geoff Lloyd, Brian Goodwin, Derek

Coope, George Pyrich, Iain Campbell and Richard Beecham all with 1.

ICCF Individual Events

These continue to prove popular amongst our members and a full list of available events is available at our web site www.scottishcca.co.uk Members should note the substantial reductions to ICCF entry fees effective from 1st January detailed elsewhere in this Bulletin and at our web site.

10th European Team Championship

Unfortunately the official announcement of this new event has been delayed and it is now very likely that the planned start date of 1st November will now be deferred.

Borwell, Alan P (2256)
Elwood, David (1772)
 WVC5 Prelims, 2012
 Scotch Game [C45]
[Notes by George Pyrich]

Alan presently heads the table having scored 8/12 and has very good prospects of securing a place in the Semi-Finals. Here we see Alan secure a quick win with some typically incisive play.

1.e4 e5
2.Nf3 Nc6
3.d4 exd4
4.Nxd4 Nf6
5.Nxc6 bxc6
6.e5 Qe7
7.Qe2 Nd5
8.c4 Ba6

Instead 8...Nb6 9.Nc3 g6 (9...Qe6 10.Qe4 g6 11.Bd2 is Vosahlik - Pugh from the 7th Euro. Teams Final in 2010 which White won brilliantly) 10.Ne4 Bg7 11.Bg5 Qb4+ is unclear.

9.Nd2 g6
10.Nf3 Nb6

10...Bg7 11.Bg5 looks strong for White; and 10...Qb4+ 11.Kd1 Nb6 12.b3 Bg7 as in Siigur - Haraldsson, World Ch. 35 sf's is unclear.

11.b3 Bg7
12.Bg5 Qb4+?!

The Queen exchange seems to only help White whilst 12...Qa3 leaves things unclear as it's not clear how White can develop his pieces.

13.Qd2 Qxd2+
14.Kxd2 h6

15.Be3



15... Nc8?
 Simply 15...d6 ; or 15...0-0-0 both look better.

16.Rd1 d6
17.exd6 cxd6
18.c5 Bxf1
19.Rhxf1 d5

19...0-0 might just be OK although is still good for White.

20.Rfe1! Kd7

20...0-0 21.Bd4 followed by doubling Rooks looks very strong for White.

21.Bd4 Bxd4
22.Nxd4 Re8?

He's now clearly lost and 22...Ne7 instead leaves White well in control after 23.Re5 Rhe8 24.Rde1

23.Rxe8 Kxe8
24.Nxc6

It's now hopeless for Black and so **1-0**



Lloyd, Geoffrey (2287)
Keast, Donald Alwyn (2233)

[A90]
 AUS-SCO 2012
[Notes by George Pyrich]

Another veteran, Geoff Lloyd, scored 2 wins in the friendly match against Australia including the following:

1.d4 f5
2.c4 e6
3.g3 Nf6
4.Nf3 d5
5.Bg2 c6
6.Bf4 Be7?!

6...Bd6 is almost invariably played here.

7.0-0 0-0

8.Nbd2

An alternative was 8.Qc2 when after 8...Qe8 9.Nbd2 Qh5 10.Nb3 Ne4 11.Nc1 g5 12.Bxb8 Rxb8 13.Ne5 Nf6 14.Ncd3 White won on move 30 in Klausen - Cardelli in WS/GMN/027.

8... Ne4
9.Nxe4 fxe4
10.Ne5 Nd7
11.Nxd7 Bxd7
12.Qd2 Be8
13.c5!

Now White simply exerts a squeeze on the q-side whilst Black can achieve little on the other wing.

13... Bg6
14.b4 Bf6
15.a4



15... a6?!
 A needless concession.
16.b5 axb5
17.axb5 cxb5
18.Rxa8 Qxa8
19.Bd6 Rd8
20.Bh3 Bf7
21.e3 Qa4
22.Qb2 Ra8
23.Rb1 g5
24.Qxb5 Qxb5
25.Rxb5 Ra1+
26.Kg2 h5
27.Rxb7 Rc1

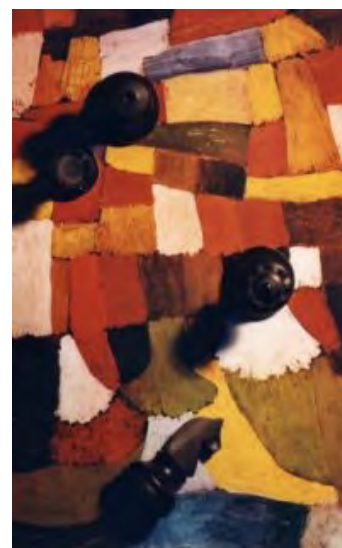
Instead 27...g4 28.Rb8+ Kg7 29.Bxg4 hxg4 30.c6 and White wins immediately.

28.g4 h4
29.Rb8+ Kg7
30.Rb2 Be8

31.f3!
 Eventually allowing the bishop back in the game.

31... Rc3
32.Kf2 exf3
33.Rb7+ Kg8
34.Rb8 Kf7
35.Bf1 Ba4
36.Bb5 Bc2
37.Rb7+ Kg8
38.c6 Be4
39.c7 Rc2+
40.Ke1 f2+
41.Kf1 h3

42.Be2
 Black can now do nothing and so **1-0**



l'arte degli scacchi, gli scacchi nell'arte
 (the art of chess, chess in art)



General Information

Members of the Scottish CCA are eligible to play in ICCF postal, email and webserver tournaments, which cover European and World, Open (O - under 1900), Higher (H - 1900-2100) and Master (M - over 2100) classes. Entries to H or M class events for the first time require evidence of grading strength, or promotion from a lower class. O and H classes have 7 players/section, with M class having 11. It is usually possible to interchange between playing modes when promotion from a class has been obtained.

New World Cup tournaments start every 2-3 years, with 11-player sections of all grading strengths, and promotion to 1/2 finals and final. Winners proceed to the Semi-Finals, and winners of these qualify for a World Cup Final. The entry fee covers all stages, and multiple entries are allowed, though Semi-Finals are restricted to 2 places per individual.

Master and GM Norm tournaments with 13-player sections are available for strong players. Master entry level is fixed ICCF rating of 2300+, (2000 ladies); non-fixed ICCF 2350+ (2050 ladies); or FIDE 2350+ (2050 ladies); while medal winners (outright winners ladies) in national championships are also eligible. GM entry levels are 150 rating points higher. A player can enter only one section per playing mode per year. Section winners who do not achieve norms receive entry to a World Championship Semi-Final.

International numeric notation is the standard for postal events, while PGN is normal for email and webserver play. Playing rules and time limits are provided for each event, and the usual postal limit is 30 days per 10 moves, with 60 days for 10 moves in email and webserver. Players may take up to 30 days leave per calendar year.

Use air mail stickers to all destinations to speed postal play, and be aware that some patience is required, as games may take up to 3 years against opponents in countries with poor mail services. Silent withdrawal is bad etiquette! International CC postcards are recommended, and can be obtained from the SCCA. Email and webserver have speeded up many events, and made it cheaper to play. Generally, you play less email/webserver games simultaneously than postal because of the faster play.

A prerequisite for entry via the SCCA is that the player remains a full member of the SCCA for the duration of the tournament. We wish you great enjoyment from your overseas games, and from making new chess friendships!

Current tournament fees are shown on the Fees page of the SCCA website, and all Scottish players competing in ICCF events have bookmarks from the SCCA site to the relevant ICCF cross-table for easy checking of results. The SCCA international secretary can advise on all aspects of play, how to enter, current entry fees, etc.

Thematic Tournaments

Postal Events 2013

Theme 4/13: Sicilian, Moscow Variation, B51-2

1.e4 c5 2.Nf3 d6 3.Bb5

Entries by 15 September; play starts 1 October

Theme 5/13: Chigorin Defence, D07

1.d4 d5 2.c4 Nc6

Entries by 15 November; plays starts 1 December

Webserver Events 2013

Theme 6/13: Nimzoindian, Rubinstein System, E53-9

1.d4 Nf6 2.c4 e6 3.Nc3 Bb4 4.e3 0-0 5.Bd3 d5 6.Nf3 c5 7.0-0

Entries by 15 October; play starts 1 November

Theme 7/13: Sicilian, Portsmouth Gambit, B30

1.e4 c5 2.Nf3 Nc6 3.b4

Entries by 1 December; plays starts 15 December

Note there are no Email Events in 2013.

News

- ❑ New ICCF Member Federations:
 - ❑ Cape Verde, Zone 4 (Francisco Carapinha)
 - ❑ Venezuela, Zone 2 (César Jesús Reyes Maldonado)
- ❑ Andrew Dearnley (ENG) elected as Marketing Director.
- ❑ Markus Hömske (FRA) appointed as NTTC (Non Title Tournament Commissioner).
- ❑ Jason Bokar (USA) appointed as Help Desk Manager.
- ❑ Neil Limbert (ENG) has resigned from the qualification Commission position after a superb 4-year contribution to ICCF. Any interested parties are invited to contact the General Secretary for more information. in June.
- ❑ Congress 2014 – Sydney – Delegate Brian Jones is already preparing for an Oct 2014 Congress Australia.
- ❑ Congress 2015 – Bulgaria has submitted a non-binding interest in hosting the 2015 in a resort on the Black Sea. However, other Federations are encouraged to submit proposals before Australia.

Further details of all ICCF activities and events; entries to events, and orders for ICCF publications may be obtained via George Pyrich at: international@scottishcca.co.uk

The SCCA Magazine is sponsored by Mackintosh Independent.