



2024/2 Grading List

By Alistair Maxwell

The second ICCF grading list of 2024 is published and new grades are based on 3 months' results reported between 1 Jan and 31 Mar 2024. The grades will apply to internationally graded games starting between 1 Apr and 30 Jun 2024.

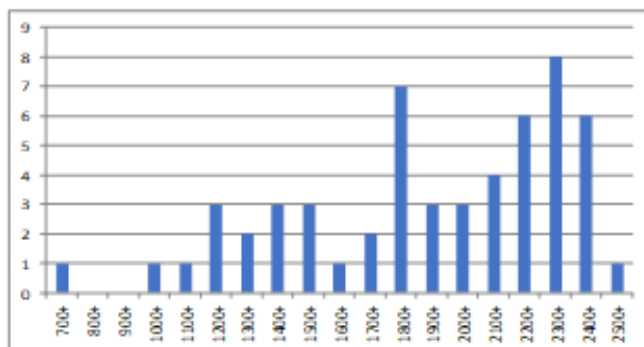
It appears that there were no new norms in the latest rating period.

There were 2 additions to the list, both previously registered under England. This resulted from the demise of BCCA where the admin had been wayward. The players have made the correct decision now!! The most significant rating moves were Ian Marshall (+127), Thomas Anderson (+91), Richard Beecham (+45), Colin Beveridge (+32), and Steve Pettigrew (+23).

New games centurions were Raymond Burrige (2000+) and Robert Montgomery (400) and Gordon Anderson (400+) Highest recorded games this quarter were Martin Hardwick (56), Iain Sneddon (36) and Carlos Almarza Mato (25).

You need to complete 12 ICCF-eligible games to obtain a rating. Fixed ratings are based on at least 30 games and only these are shown below. Rating changes are denoted by arrows. Email grader@scottishhcca.co.uk if you have any queries.

No.	Name	Results	Grade	No.	Name	Results	Grade
317	Almarza Mato, C (CCE)	2542	2116 ↓	584	MacGregor, C A	520	1923 ↓
518	Anderson, G M (CCM, SM)	416	2302 ↑	532	Mackintosh, I (SIM)	863	2410 ↔
	Anderson, T R	72	1792 ↑	216	MacMillen, A N	1518	1655 ↑
	Antunes, A	53	2205 ↑		Major, B	115	1180 ↓
313	Armstrong, J McK	551	1467 ↑	566	Marshall, I H	926	2281 ↑
511	Beecham, C R (SIM)	554	2515 ↑	434	Matheis, T (IM)	321	2450 ↑
599	Bell, A D (IM)	285	2429 ↔		Maxwell, A	75	2060 ↔
501	Bennett, P G (CCM, SM)	513	2378 ↔		Miles, A	106	1231 ↔
481	Beveridge, C (CCM)	837	2336 ↑	598	Montgomery, R S (CCM)	400	2333 ↑
472	Blake, M J (CCM)	975	2386 ↓		Morrison, G J (CCM)	93	2326 ↑
509	Borwell, A P (IM)	1105	2197 ↔		Moss, R	47	1778 ↔
	Bruce, R (CCE)	1122	1877		Munro, P R	101	2156
486	Buchan, A W (CCM)	461	2445 ↓	474	Murden, C (IM)	686	2464 ↑
602	Burrige, R J	2001	1817 ↓	564	Murray, J S	116	1978 ↓
	Carswell, D	53	1584 ↔	603	O'Neill-McAleenan, C	252	1571 ↔
247	Cormack, W H	137	1833 ↓	604	Paine, Prof K A (CCM, SM)	260	2333 ↔
166	Cumming, D R (CCM, SM)	2285	2239 ↓		Pettigrew, S	196	1402 ↑
422	Dawson, Prof A G (CCE)	179	2144 ↔	432	Price, D	534	1983 ↓
478	Dunn, J	552	1261 ↓		Rafferty, F	42	1343 ↔
371	Edney, D	339	1818 ↔		Ross, Derek I	57	1808 ↔
462	Gilbert, R	334	1502 ↓		Sedstrem, A	119	1348 ↔
596	Hardwick, M E	1997	739 ↓	477	Smith, M J (CCE)	134	2239 ↔
548	Kilgour, D A (GM)	379	2287 ↑	439	Sneddon, I (CCM, SM)	797	2417 ↑
260	Knox, A	431	1266 ↔	057	Taylor, A	49	1801 ↔
	Lima, Joao	30	2039 ↔		Taylor, R	82	1425 ↔
264	Lloyd, G (CCM, SM)	1226	2281 ↓		Taylor, W (CCE)	223	2088 ↑
	MacDonald, M	122	1004 ↓	605	Whittaker, I P (CCE)	333	2313 ↓
				480	Wicht, D	82	1890 ↔



Statistical Analysis

Total listed	55
New entrants	2
Deletions (inactive, lapsed or non-members)	0
Grading increases (↑)	16
Grading decreases (↓)	16
Grading static (↔)	21

Top 30 Grades

Beecham, C R (SIM)	2515	Kilgour, D A (GM)	2287
Murden, C (IM)	2464	Lloyd, G (CCM, SM)	2281
Matheis, T (IM)	2450	Marshall, I H	2281
Buchan, A W (CCM)	2445	Cumming, D R (CCM, SM)	2239
Bell, A D (IM)	2429	Smith, M J (CCE)	2205
Sneddon, I (CCM, SM)	2417	Antunes, A	2205
Mackintosh, I (SIM)	2410	Borwell, A P (IM)	2197
Blake, M J (CCM)	2386	Munro, P R	2156
Bennett, P G (CCM, SM)	2378	Dawson, Prof A G (CCE)	2144
Beveridge, C (CCM)	2336	Almarza Mato, C (CCE)	2116
Montgomery, R S (CCM)	2333	Taylor, W (CCE)	2088
Paine, Prof K A (CCM, SM)	2333	Maxwell, A	2060
Morrison, G J (CCM)	2326	Lima, J	2039
Whittaker, I P (CCE)	2313	Price, D	1983
Anderson, G M (CCM, SM)	2302	Murray, J S	1978

Top 10 Rated Games

Almarza-Mato, C (CCE)	2542	Lloyd, G (CCM, SM)	1226
Cumming, D R (CCM, SM)	2285	Bruce, R (CCE)	1122
Burridge, R J	2001	Borwell, A P (IM)	1105
Hardwick, M E	1997	Blake, M J (CCM)	975
MacMillen, A N	1518	Marshall, I H	926

Selected Personal Best Grades 2024/2

	New	Previous		Gain
Beecham, C R (SIM)	2515	2511	2010/3	4
Murden, C (IM)	2464	2462	2024/1	2
Sneddon, I (CCM, SM)	2417	2402	2024/1	15
Beveridge, C (CCM)	2336	2304	2024/1	32
Marshall, I H	2281	2154	2024/1	127
Antunes, A	2205	2199	2024/1	16
Anderson, T R	1792	1777	2023/1	15

Other Notes

Senior International Master (SIM) title norms are held by:
Matheis, T (1), Murden, C (1)

International Master (IM) title norms are held by:
Anderson, G M (1), Bennett, P G (1), Cumming, D R (1),
Sneddon, I (2)

Scottish Master (SM) title norms are held by:
Buchan, A (1), Beveridge, C (1), Morrison, G J (1),
Whittaker, I P (1)

Correspondence Chess Master (CCM) title norms:
Whittaker, I P (1), Taylor, W (1)

Correspondence Chess Expert (CCE) title norms:
Burridge, R J (2).

This list includes a number of our members who are registered with other countries. Members who have played <30 games are not shown.

To check your rating online at any time, go to the ICCF webserver site (www.iccf.com), click on the ICCF Ratings link then complete the search boxes.

A number of useful online rating enquiry facilities are available, including a personal forecasted rating as your results come in.