

Scottish Correspondence Chess Association

Magazine No.132

Winter 2015

- **ICCF Grading List 2016/1**
 - *George analyses the Q1 statistics*
- **2015 Results**
 - *Iain summarises last year's domestic events*
- **Good Form, BadForm**
 - *Peter relates his ups and downs*
- **Games Column**
 - *High-quality analysis from Adrian Hollis Memorial*
- **ICCF Congress, Cardiff**
 - *George reflects on proceedings*
- **International Update**
 - *George and Alan review overseas and veterans' events*

4 Printed Issues
Price £5 per annum



Picture by Derek MacIver



Welcome to the fourth and final edition of the 2015 magazine set. Wet and windy weather reigns here, with a lot of misery being created by local flooding. Just as dismal are the names being cooked up for the storms – if the rain doesn't get you, the banality will.

George Pyrich has analysed the first ICCF rating list of 2016 for us, with some comings and goings as well as a further two players reaching 1000 graded games.

The last magazine of the set traditionally summarises all our domestic results from the preceding season, and this year is no exception. Some fine individual and team performances in there.

Peter Bennett reflects on the vagaries of his form: up, down and completely unaccountable. Sounds familiar, but there's some more artwork from Samuel Bak as consolation.

Our Games Column contains just two games, but the first is a treat – SIMs Mike Donnelly and Richard Beecham combine forces to annotate a wild game from the Adrian Hollis Memorial. Regular contributor Raymond Burrige also chips in with a fine win.

George provides an account of the ICCF Congress held in Cardiff back in August. If that seems a long time ago, we're still waiting for the minutes to be formally published!

George also publishes a fulsome international report with games from members Alan Bell, Eoin Campbell, Alan Borwell, Ken Stewart and Geoff Lloyd.

Our Notices pages contain a reminder of our 2015 Best Game Prize Competition which has a closing date of 31st January – GM David Kilgour has kindly agreed to judge the entries, so please send in your gems by month-end.

There's another quote from Geoff Lloyd under 'The Things People Say' – please send your favourites to keep him company.

Finally, I hope you all had a thoroughly enjoyable Christmas break and all good wishes to you throughout 2016!

SCCA Membership

Annual: £10/year buys you entry to all SCCA domestic events and friendly international matches, plus 4 quarterly e-magazines.

Life: £100 gets you annual membership for the rest of your days (plus a year's worth of printed magazines to try out).

Patron: £125 (+ any further donation you care to make) gets you life membership and your name on something commemorative.

SCCA 100 Club

The 100 Club is an important revenue-earner for the SCCA and it helps us to keep our fees low and/or unchanged year on year. Responsibility for the 100 Club rests with our Treasurer, Gordon Anderson.

Units cost £1 with some members taking one unit while others take as many as 10 units per month. From the Association's perspective paying by Bankers Order is most convenient.

If you don't already subscribe to the 100 club please consider if you can help the SCCA by taking out units and make contact with Gordon whose contact details are shown below.

Recent 100 Club Winners

2015	1st	2nd
December	D Carswell	G M Anderson
November	S G Mackenzie	J Anderson
October	J S Murray	G W G Livie

SCCA Officials

Position	Name	Address	Phone	Email
President	Iain Mackintosh	7 Tullylumb Terrace, Perth PH1 1BA	+44 (0) 1738 623194	president@scottishcca.co.uk
VP & International	George Pyrich	Can Connect Box 206, Avenida America, 04800 Albox, Almeria, Spain	+34 63 4372 729	international@scottishcca.co.uk
Secretary *				secretary@scottishcca.co.uk
Membership	Kevin Paine	47 Park Hill Drive, Frome BA11 2LQ	+44 (0) 1373 467585	membership@scottishcca.co.uk
Treasurer	Gordon Anderson	63 Wellin Lane, Edwalton, Nottingham NG12 4AH	+44 (0) 115 923 1021	treasurer@scottishcca.co.uk
Member	Jim Anderson	162 Fountainbleau Drive, Dundee DD4 8BJ	+44 (0) 1382 501649	jim.anderson@scottishcca.co.uk
Member	Alan Borwell	8 Wheatfield Avenue, Inchtute PH14 9RX	+44 (0) 1828 686556	alan.borwell@scottishcca.co.uk
Member	Alastair Dawson	10 Berry Place, St Andrews KY16 8RG	+44(0) 1334 477236	alastair.dawson@scottishcca.co.uk
Games Editor	Iain Mackintosh	7 Tullylumb Terrace, Perth PH1 1BA	+44 (0) 1738 623194	games@scottishcca.co.uk

NB Secretarial duties will be undertaken by Kevin Paine (enquiries), Jim Anderson (domestic events) and Iain Mackintosh (minutes) pro tem.



2016 ICCF World Championship



ICCF Title Tournaments Commissioner Gian-Maria Tani writes to announce the Preliminaries stage of the 2016 (40th) World Championship.

This event will be played in sections of 13 players (or 15/17 at the organisers' discretion), with entries closing on 15th February and play commencing on 20th March.

Entry must be made through national delegates and each member federation is allowed to nominate entries - SCCA is once again entitled to 3 places in the 2016 cycle (includes Preliminaries and Semi-Finals). Stuart Graham has achieved pre-qualification for the 2016 Preliminaries following his performance in the 35th World Championship.

If you are interested, please contact George Pyrich as soon as possible and before 8th February.

North Atlantic Team Tournament 7



Valentín Costa Trillo of AEAC (Spanish CCF) writes to advise that NAT7 will commence on May 1st, 2016. Team registration closes on February 29th.

13 8-player teams are expected to participate and play will be on webserver with 10/50 time controls. Team selection will probably be influenced by the start of the next ICCF Olympiad, due around the same time. For further information and to indicate your interest, please contact George Pyrich.

ICCF Direct Entry 10th Anniversary Tournament

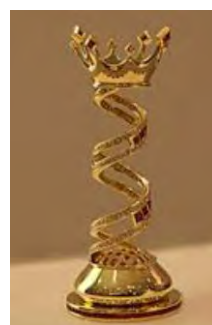


Ian Pheby (ENG), ICCF Direct Entry Commissioner, writes to announce that the DE 10th Anniversary Tournament will commence on April 5th, 2016.

The event is webserver-based and will be organised in preliminary, semi-final and final stages. Preliminary sections will be 9-, 11- or 13-player, depending on entries received, and play is expected to last 18 months. Time control is 10/30, conditionals are permitted and all games will be rated with Title Norms possible. A prize fund of €1,000 will operate.

The event is open to all players who are eligible to enter tournaments via the Direct Entry Programme. The entry fee will be €6.35. Registration closes on March 5th, 2016. For further information please contact George Pyrich.

SCCA Annual Best Game Prize



The SCCA Best Game Prize will once again operate this year, covering games completed during 2015.

The trophy (which won't look like the illustration!) will carry the inscription of its sponsor, Raymond Burridge, i.e.

**The R.J. Burridge Trophy
SCCA Best Game Prize 2015
(winner's name)**

To recap on the rules:

- Entries will be games which finish in a given calendar year (2015 in this case);
- Entries will be restricted to events organised by SCCA or ICCF;
- Only SCCA members can submit their games (wins or draws);
- Games may have been previously published;
- The submission period will close at the end of January 2016;
- The Committee will appoint a judge (who cannot submit a game!);
- The winner will be announced by end-March 2016 and we'll feature the game in a subsequent magazine;
- A trophy miniature and certificate will be awarded to the winner.

GM David Kilgour has now kindly agreed to act as judge and we'll announce the winning entry by end-March.

Please send your games to Iain Mackintosh at president@scottishcca.co.uk – multiple entries are allowed – to reach him by end-January 2016.

SCCA 100 Club



Treasurer Gordon Anderson writes:

A number of members have actively subscribed to the Association's 100 club for a number of years and these contributions are very much appreciated. Recently, 3 long standing subscribers have retired and decided that they will no longer contribute to the 100 club. We urgently need some new subscribers.

If you have not been a subscriber or have previously subscribed but allowed your subscription to lapse, why not take up a unit or two or indeed three units (always happy to accept subscriptions for more units)?

If you are interested please contact Gordon on treasurer@scottishcca.co.uk for more information. The usual method of subscribing is monthly standing order which spreads the annual cost.

The Things People Say



Geoff Lloyd contributes another quote in the spirit of Emanuel Lasker's observation that 'chess would be laughable, were it not so serious.'

An opponent of Geoff's offered the draw thus: 'Since there are many stones on the board is a draw on the early?'

If you've any printable quotes you'd like to share, please send them to

webmaster@scottishcca.co.uk

Fernschach 2016 CC Database



Herbert Bellmann writes to advise that Fernschach offers a CC games database in addition to ICCF and commercial products. In summary:

- Total 900,000 games (from 1991)
- Approximately 7,700 annotated
- Around 700 new annotated games in 2016
- Games from BdF Chess Server and ICCF webserver
- Games from Lechenicher chess server
- Games from many national and international correspondence chess servers
- German Correspondence Chess Federation (BDF) mail, e-mail and fax games

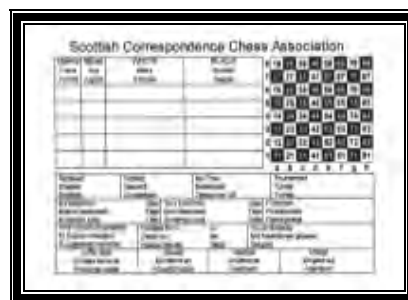
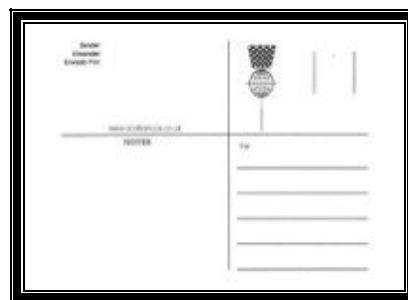
The price is €12 (shipping within Germany) and €15 (shipping elsewhere).

For further details, contact Herbert at:

Herbert Bellmann
On the Brink 11
46399 Bocholt
Germany

Email: hebel57@gmx.de

CC Postcards



The SCCA has a stock of cc postcards showing the SCCA logo and website address. They are suitable for domestic and international use (English, German and Spanish used).

Orders in units of 100 please. The cards are supplied at their production cost (£2.50/100) and p&p is also required.

Orders and payments to Iain Mackintosh at chess@iainmack.co.uk please. Royal Mail prices rose in April 2015, so check current p&p prices with Iain first.



2016/1 Grading List

By George Pyrich

The first ICCF grading list of 2016 is published and new grades are based on 3 months' results reported between 1 September and 30 November 2015. The grades will apply to internationally graded games starting between 1 January and 31 March 2016.

There were five additions to this list – Colin Beveridge, John Dunn, Michael Dyer, A G Stewart and J Thornton, plus three deletions due to inactivity – Roland Fraser, A Sedstrem, and Peter Smith. Membership numbers are retained for easy reinstatement should any previously removed players return to the board.

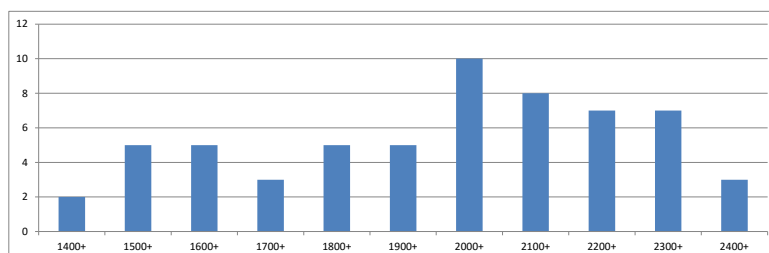
Kevin Paine moved back to 2300+, Raymond Burrridge regained 2100+ and Steve Murray reached 2000 – well done to all of them!

Two more players passed 1000 graded games – Alan Borwell and David Cumming. Raymond Burrridge is now 900+, Andrew Macmillen 800+, Richard Beecham 400, Peter Bennett and Eoin Campbell are both 300+ and Tom Matheis 200+.

Our resident games addicts were again very active, with Raymond Burrridge completing 59 ties, ahead of Andrew Macmillen on 55, Eoin Campbell and David Cumming each with 52 and Martin Hardwick on 34.

You need to complete 12 ICCF-eligible games to obtain a provisional rating (* below). Provisional ratings apply until 30 games have been processed. Rating changes are denoted by arrows. Email grader@scottishcca.co.uk if you have any queries.

No.	Name	Results	Grade	No.	Name	Results	Grade
318	Almarza Mato, C	1008	2168 ↔	596	Hardwick, M E	666	1412 ↓
518	Anderson, G M (SM)	279	2325 ↔	063	Harvey, D	102	2053 ↓
121	Anderson, J	259	1753 ↑	1013	Hilton, S H	133	1650 ↑
049	Armstrong, A	178	1864 ↓	447	Jamieson, I M	82	1918 ↔
313	Armstrong, J McK	308	1610 ↓	548	Kilgour, D A (GM)	324	2299 ↓
511	Beecham, C R (IM)	400	2467 ↑	260	Knox, A	185	1545 ↑
599	Bell, A D (SM)	181	2395 ↓	264	Lloyd, G (SM)	724	2256 ↑
501	Bennett, P G (SM)	312	2364 ↓	471	Macgilchrist, Mrs S	52	2095 ↓
	Beveridge, C	189	2149 ↑	584	MacGregor, C A	379	1915 ↑
509	Borwell, A P (IM)	1006	2291 ↑	532	Mackintosh, I (IM)	642	2405 ↓
424	Burrridge, R J	911	2148 ↑	216	MacMillen, A N	807	1681 ↓
435	Cairney, J	62	2076 ↔	566	Marshall, I H	534	2137 ↑
601	Campbell, E S	338	2120 ↓	434	Matheis, T (IM)	202	2449 ↓
038	Campbell, I S	277	1863 ↓	412	McKinstry, J	89	1523 ↓
	Clark, S L	125	2056 ↓	401	Moir, P J	178	1602 ↓
364	Coope, D W	692	1919 ↑	598	Montgomery, R S	261	2273 ↑
247	Cormack, W H	97	1891 ↓	564	Murray, J S	47	2000 ↑
527	Craig, T J (SM)	372	2323 ↔	440	Neil, C	192	1497 ↑
166	Cumming, D R (SM)	1017	2260 ↓	429	O'Neill-McAleenan, C	126	2054 ↑
422	Dawson, Prof A G	89	2049 ↔	444	Paine, Dr K A	168	2301 ↑
572	Dempster, D	768	1800 ↓	315	Petrie, A	104	1516 ↓
	Dunn, J	193	1576 ↑	432	Price, D	318	1989 ↓
	Dyer, M	103	2077 ↑	048	Pyrich, G D (IM)	955	2124 ↓
371	Edney, D	205	1993 ↓	439	Smith, M J	53	2027 ↑
462	Gilbert, R	89	1781 ↑		Stewart, A G	32	2159 ↑
086	Gillam, S R (SM)	144	2245 ↓	546	Stewart, Dr K W C	169	2107 ↑
551	Giulian, P M (SIM)	473	2398 ↔	1120	Taylor, W	60	2002 ↓
124	Goodwin, B J	298	1871 ↓		Thornton, J	35	1611 ↑
445	Graham, S (SM)	354	2202 ↔	452	Toye, D T	77	1582 ↔
399	Grant, J	44	1734 ↓	530	Watson, J (IM)	149	2300 ↔



Statistical Analysis

Total listed	60
New entrants	5
Deletions (inactive, lapsed or non-members)	3
Full grades (30+ games)	60
Provisional grades (<30 games)	0
Grading increases (↑)	24
Grading decreases (↓)	26
Grading static (↔)	10

Top 30 Grades

Beecham, C R (SIM)	2467	Gillam, S R (SM)	2245
Matheis, T (IM)	2449	Graham, S (SM)	2202
Mackintosh, I (IM)	2405	Almarza Mato, C	2168
Giulian, P M (SIM)	2398	Stewart, A G	2159
Bell, A D (SM)	2395	Beveridge, C	2149
Bennett, P G (SM)	2364	Burridge, R J	2148
Anderson, G M (SM)	2325	Marshall, I H	2137
Craig, T J (SM)	2323	Pyrich, G D (IM)	2124
Paine, Dr K A	2301	Campbell, E S	2120
Watson, J (IM)	2300	Stewart, Dr K W C	2107
Kilgour, D A (GM)	2299	Macgilchrist, Mrs S	2095
Borwell, A P (IM)	2291	Cairney, J	2076
Montgomery, R S	2273	Clark, S L	2056
Cumming, D R (SM)	2260	O'Neill-McAleenan, C	2054
Lloyd, G (SM)	2256	Harvey, D	2053

Top 30 Rated Games

Cumming, D R (SM)	1017	Craig, T J (SM)	372
Almarza-Mato, C	1008	Graham, S (SM)	354
Borwell, A P (IM)	1006	Campbell, E S	338
Pyrich, G D (IM)	955	Kilgour, D A (GM)	324
Burridge, R J	911	Price, D	318
MacMillen, A N	807	Bennett, P G (SM)	312
Dempster, D	768	Armstrong, J McK	308
Lloyd, G (SM)	724	Goodwin, B J	298
Coope, D W	692	Anderson, G M (SM)	279
Hardwick, M E	666	Montgomery, R S	261
Mackintosh, I (IM)	642	Anderson, J	259
Marshall, I H	534	Edney, D	205
Giulian, P M (SIM)	473	Matheis, T (IM)	202
Beecham, C R (SIM)	400	Dunn, J	193
MacGregor, C A	379	Neil, C	192

Other Notes

This list includes a number of our members who are registered with other countries, and members who have played <12 games and have yet to receive a provisional rating. Players registered as SCO with ICCF, but who are not SCCA members, have been filtered out.

To check your rating online at any time, go to the ICCF webserver site (www.iccf-webchess.com), click on the Rating list link then complete the search boxes.

Note that ICCF (Gerhard Binder) has now discontinued support for the Eloquary program, previously available for download from www.iccf.com

The Eloquary software is now incompatible with 64-bit versions of the Windows operating system.

A number of useful online rating enquiry facilities are available at www.iccf-webchess.com



2015 Results

By Iain Mackintosh

Championship

SCO/C2015, ScottishCCA Championship 2015/16

						TD Maxwell, Alistair										Score	Wins	SB	RG	Place		
Rated						1	1	2	2	3	3	4	4	5	5						6	6
1	SCO	620426	Cumming, David R.	2330				½	½	1	½	1	½	1 ^E	1 ^E	1	1	8	6	29.75	0	1
2	SCO	620345	IM Mackintosh, Iain	2437	½	½			1	½	1	.	1	1	1	1	1	7.5	6	28	1	2
3	SCO	620716	Campbell, Eoin S.	2147	½	0	½	0			½	½	½	½	½	1	1	5	2	17.25	0	3
4	SCO	620204	IM Pyrich, George D.	2168	½	0	.	0	½	½			½	½	1	1	1	4.5	2	14	1	4
5	SCO	620440	MacGilchrist, Siegrun	2108	0 ^E	0 ^E	0	0	½	½	½	½				½	½	3	0	10.5	0	5
6	SCO	620410	Goodwin, Brian J.	1952	0	0	0	0	0	0	0	0	0	½	½			1	0	3	0	6

SCO/C2014, Scottish CCA Championship 2014/15

						TD Maxwell, Alistair										Score	Wins	SB	RG	Place		
Rated						1	1	2	2	3	3	4	4	5	5						6	6
1	SCO	620529	Montgomery, Robert S.	2310				½	½	½	½	½	0	1	1	1	½	6	3	26.25	0	1
2	SCO	620716	Campbell, Eoin S.	2000	½	½			½	½	1	½	½	½	½	1	½	6	2	28.25	0	2
3	SCO	629031	Lloyd, Geoffrey	2276	½	½	½	½			½	½	1	½	1	½	½	6	2	27.25	0	3
4	SCO	620426	Cumming, David R.	2313	1	½	½	0	½	½			½	½	½	1	1	5.5	2	26	0	4
5	SCO	620635	Burridge, Raymond John	2048	0	0	½	½	½	0	½	½				½	½	3.5	0	17.5	0	5
6	SCO	620410	Goodwin, Brian J.	1889	½	0	½	0	½	0	0	0	½	½	½			3	0	15.25	0	6

The 2014-15 tournament is complete with Robert Montgomery winning his first title by edging out Eoin Campbell and Geoff Lloyd by virtue of the Baumbach tie-break (most wins). In the 2015-16 event, we are down to the last game where Iain Mackintosh has to draw or win against George Pyrich to tie with or beat leader David Cumming.

Premier

SCO/Prem2015/A, SCCA Premier 2015 A

						TD Paine, Dr. Kevin (IA)						Score	Wins	SB	RG	Place
Rated						1	2	3	4	5	6					
1	SCO	620635	Burridge, Raymond John	1986			1	1	1	1	1	5	5	10	0	1
2	SCO	620424	Anderson, James	1723	0			1	0	1	1	3	3	5	0	2
3	SCO	620454	MacMillen, Andrew N.	1739	0	0			1	1	1	3	3	4	0	3
4	SCO	620713	Gilbert, Robert	1813	0	1	0			0	1	2	2	3	0	4
5	SCO	620603	Armstrong, John M.	1599	0	0	0	1			1	2	2	2	0	5
6	SCO	620578	Petrie, A.	1540	0	0	0	0	0	0		0	0	0	0	6

Only one section this year, with Raymond Burridge winning all his games to register his first entry in our 100% Club.

Open

SCO/Open2015/A, SCCA Open 2015 Section A

					TD Paine, Dr. Kevin (IA)														
Rated					1	1	2	2	3	3	4	4	5	5	Score	Wins	SB	RG	Place
1	SCO	620713	Gilbert, Robert	1813			1	1	1	1	1	1	1	1	8	8	24	0	1
2	SCO	620454	MacMillen, Andrew N.	1739	0	0			1	1	1	1	1	1	6	6	12	0	2
3	SCO	620603	Armstrong, John M.	1599	0	0	0	0			1	1	½	1	3.5	3	4.5	0	3
4	SCO	620578	Petrie, A.	1540	0	0	0	0	0	0			1	½	1.5	1	1.5	0	4
5	SCO	620648	Hardwick, Martin E.	1495	0	0	0	0	0	½	½	0			1	0	2.5	0	5

SCO/Open2015/B, SCCA Open 2015 Section B

					TD Paine, Dr. Kevin (IA)														
Rated					1	1	2	2	3	3	4	4	5	5	Score	Wins	SB	RG	Place
1	SCO	620424	Anderson, James	1723			½	1	1	1	1 ^E	1	1	½	7	6	22.5	0	1
2	SCO	620454	MacMillen, Andrew N.	1739	0	½			1	1	1	1	1	1	6.5	6	16.5	0	2
3	SCO	620578	<u>Petrie, A.</u>	1540	0	0	0	0			1	1	1	1	4	4	5	0	3
4	SCO	211319	Neil, Charles	1549	0	0 ^E	0	0	0	0			1	1	2	2	1	0	4
5	SCO	620648	Hardwick, Martin E.	1495	½	0	0	0	0	0	0	0			0.5	0	3.5	0	5

Back to two Open sections this year, and in the first, Robert Gilbert repeated his 100% Club performance of two years ago. In section B, Jim Anderson prevailed. Andrew Macmillen was runner-up in both cases.

Challengers

2014-15 Cycle	Games	Complete	Ongoing	Points
Armstrong, J McK	8	8	0	2
Burridge, R J	8	8	0	5½
Cumming, D R	6	6	0	6
Davis, A	2	2	0	0
Gilbert, R	8	8	0	4½
Hardwick, M E	4	4	0	0

2015-16 Cycle	Games	Complete	Ongoing	Points
Armstrong, J McK	14	13	1	4
Blake, M	4	2	2	1½
Burridge, R J	18	15	3	11
Cumming, D R	8	8	0	8
Gilbert, R	4	0	4	0
Hardwick, M E	14	12	2	½
Lawrence, S	4	1	3	½
Neil, C	14	11	3	5½

No further games were played in the 2014-15 cycle so, as previously intimated, Raymond Burridge takes gold. The 2015-16 cycle showed a welcome increase in players and games. In gold medal position is Raymond Burridge once more. There are still 9 unfinished games remaining in the cycle, but Raymond will retain his title unless there is a flurry of new games starting before 31 December. Honourable mention should be made of David Cumming who again scored 100% in his 8 games.

Leagues

There was no Postal League due to lack of entries. Three webserver leagues were contested once more, but a total of 20 teams reflected the increasing popularity of this event. The divisional winners were BCCA Diamonds, Hounds of the Scheming Mind C and Civil Service B – congratulations to all of them!

Webserver League Division 1

SCO/WLeague1/15, SCCA Web League Div 1 2015

TD Dawson, A. G.

			1	2	3	4	5	6	7	Score	%	+/-	Team results	FG	RG	Place	
1	+	BCCA Diamonds	2204	█	2.5	2.5	2.5	3.5	2	2.5	15.5	67	8	11	23	1	1
2		Hounds of the Scheming Mind B	2170	1.5	█	2	2	2.5	2.5	2.5	13	54	2	8	24	0	2
3		Hounds of the Scheming Mind A	2282	1.5	2	█	1.5	2	2.5	3	12.5	56	3	6	22	2	3
4	⊗	Perth Correspondants	2134	1.5	2	1.5	█	2	3	2.5	12.5	54	2	6	23	1	4
5	+	Civil Service A	2147	0.5	1.5	1	2	█	3	2	10	43	-3	4	23	1	5
6	+	Social A	2170	2	1.5	1.5	1	1	█	2	9	37	-6	2	24	0	6
7	⊗	Black Knight	2087	0.5	1.5	1	1.5	2	2	█	8.5	36	-6	2	23	1	7

Team	Board 1	Board 2	Board 3	Board 4
BCCA Diamonds	Thompson, B	Mason, I J	Wilkinson, J P	Maguire, G
Hounds A	R Maldonado, C J	Pinchon, F	Laine, J	Hollands, G
Perth Corresp	Borwell, A P	Paine, Dr K A	Harvey, D	Warren, J
Hounds B	Ducharde, A	Björklund, T	Farkas, L	Kjeldsen, K
Civil Service A	Sargent, J M	Lewyk, I	Barber, P	Edney, D
Social A	Vivante-Sowter, J	Ewan, R	Pallett, R	Etherington, J
Black Knight	Bell, A D	Pyrich, G D	Marshall, I H	Dempster, D

Webserver League Division 2

SCO/WLeague2/15, SCCA Web League Div 2 2015

TD Dawson, A. G.

				1	2	3	4	5	6	7	Score	%	+/-	Team results	FG	RG	Place
1		Hounds of the Scheming Mind C	1934	█	2.5	2.5	3	4	4	4	20	83	16	12	24	0	1
2	+	White Rose A	2175	1.5	█	2	3	4	3.5	4	18	75	12	9	24	0	2
3	⊗	Knights of the Board A	2170	1.5	2	█	3	3	3.5	4	17	70	10	9	24	0	3
4	+	BCCA Emeralds	2024	1	1	1	█	3.5	3.5	4	14	58	4	6	24	0	4
5	⊗	Renfrewshire Knights	1829	0	0	1	0.5	█	2.5	3	7	29	-10	4	24	0	5
6	⊗	Brutal Realism	1884	0	0.5	0.5	0.5	1.5	█	2	5	20	-14	1	24	0	6
7	+	Social B	1791	0	0	0	0	1	2	█	3	12	-18	1	24	0	7

Team	Board 1	Board 2	Board 3	Board 4
Hounds C	Williamson, D L	Waller, A	Kasperski, M	Huff, D C
White Rose A	Sutton, A B	Cook, D D	Herriot, B J	Graham, O
Knights Board A	Cumming, D R	Gillam, S R	Price, D	Burridge, R J
BCCA Emeralds	Beveridge, C	Glanville, C M	Gould, I C	Cole, S
Renfrew Knights	Cochrane, R	Macgregor, C A	Gilbert, R	Hilton, S H
Brutal Realism	Taylor, W	Murray, J S	Grant, J	Macmillen, A N
Social B	Rosser, G C	Ash, G	Ross, G J S	Baron, M

Webserver League Division 3

SCO/WLeague3/15, SCCA Web League Div 3 2015

TD Dawson, A. G.

			1	2	3	4	5	6	Score	%	+/-	Team results	FG	RG	Place	
1	+	Civil Service B	1860		2.5	3	3	3.5	4	16	80	12	10	20	0	1
2	+	BCCA Sapphires	1753	1.5		3.5	2.5	3.5	4	15	75	10	8	20	0	2
3	+	White Rose B	1798	1	0.5		2	2.5	4	10	50	0	5	20	0	3
4	+	White Rose C	1777	1	1.5	2		2.5	3	10	50	0	5	20	0	4
5	+	Civil Service C	1757	0.5	0.5	1.5	1.5		3	7	34	-6	2	20	0	5
6	+	BCCA Rubies	1520	0	0	0	1	1		2	10	-16	0	20	0	6

Team	Board 1	Board 2	Board 3	Board 4
Civil Service B	Pickering, P	Twitchell, N H	Bicknell, G	Dick, S L
BCCA Sapphires	Winter, M J	Tibbert, P H	Dudeney, K	Woodhouse, S
White Rose B	Grummit, W	Wood, B	White, Ri	Holt, F
White Rose C	Beckett, P J	Clark, M	Rowley, M	Ward, B
Civil Service C	Pomeroy, R J	Ryan, R	White Ro	Sedstrem, A
BCCA Rubies	Howell, D	Selby, R	Tanner, A	Hardwick, M E

3rd Webserver Open Final A

SCO/Open/3A/f, 3rd SCCA WS Open Final A

TD Pyrich, George D. (IA)

Rated								1	2	3	4	5	6	7	Score	Wins	SB	RG	Place
1	SCO	211558		Bennett, Peter G.					½	½	½	½	1	1	4	2	9.5	0	1
2	SCO	620588	IM	Matheis, Thomas				½		½	½	½	½	1	3.5	1	8.75	0	2
3	SCO	620184	SIM	Beecham, C. Richard				½	½		1	.	½	½	3	1	8.25	1	3
4	SCO	629031		Lloyd, Geoffrey				½	½	0		½	½	½	2.5	0	6.75	0	4
5	SCO	620345	IM	Mackintosh, Iain				½	½	.	½		.	½	2	0	6	2	5
6	BRA	70104		Kover, Prof. Dr. Warner Bruce				0	½	½	½	.		½	2	0	5.5	1	6
7	SCO	620426		Cumming, David R.				0	0	½	½	½	½		2	0	4.75	0	7

3rd Webserver Open Final B

SCO/Open/3B/f, 3rd Scottish CCA WS Open - Final B

TD Pyrich, George D. (IA)

Rated								1	1	2	2	3	3	4	4	5	5	6	6	Score	Wins	SB	RG	Place
1	SCO	620716		Campbell, Eoin S.						1	1	1	½	1	1	1	1	1	½	9	8	38	0	1
2	SCO	210729		Coope, Derek William				0	0			½	½	½	½	1	1	1	1 ^E	6	4	21	0	2
3	SCO	620635		Burridge, Raymond John				½	0	½	½			1	½	½	½	½	½	5	1	22.5	0	3
4	SCO	629036		Edney, David				0	0	½	½	½	0			1	0	1	½	4	2	16	0	4
5	SCO	620522		Cormack, William H.				0	0	0	0	½	½	1	0			½	½	3	1	12	0	5
6	SCO	30129		Dempster, Dave				½	0	0 ^E	0	½	½	½	0	½	½			3	0	14.5	0	6

In the strongly graded Final A, the leader in the clubhouse is Peter Bennett, but he could still be caught by Richard Beecham.

In Final B, Eoin Campbell emerging a convincing winner with a 90% score – very well done!



Good Form, Bad Form

some thoughts on the current state of my webserver chess

By Peter Bennett

We live in the age of the draw. I am currently playing in several tournaments in which over 95% of all the games are drawn. I am only waiting to see the crosstable of a tournament in which there is no decisive game and 13 players share the position of 1= at its conclusion. Then perhaps we should stop playing CC altogether. In such a scenario, the difference between a “good” tournament and a “bad” one will be so slight that we will stop talking about form altogether.

The curious thing is, this is not the way it is happening, at least not to me. My CC form, for some reason, goes up and down like the proverbial yo-yo; and I have few ideas as to why this happens. It all started with the fifth running of the ICCF Veterans World Cup – VWC5. I had just scraped into the VWC4 Semifinal stage from the only preliminary group (pr) in which I had played; so to give myself a slightly better chance of qualifying I entered two sections in VWC5.

The pairings, when they came out, fully justified my decision, as there was a big disparity in the strength of the opposition between the two groups. In VWC5pr29, there were only two players who were higher-graded than I was, I drew my individual games with both of them easily, I overtook both of them in the grading list during the tournament, got three quick wins against lower-order players and became, briefly, favourite to win the section.

So what happened next? My attacks fizzled out against every other player, I dropped a game with White on a stupid “typo” in my own analysis notes and I finished in 6th place with just 7.0/12.0, my worst performance to date in a VWCpr. What a load of rubbish, I thought!

Meanwhile, in VWC5pr03, I was on a hiding to nothing. There were four players who were 50 or more points higher in the grading list than me (and higher than everyone in VWC5pr29). The real worry, however, lay in another statistic (to which I always refer in veterans events): six of my opponents had held historical gradings of 2430 or more (the highest was 2529), more than 140 points higher than mine had ever been, at that stage. I felt like cannon fodder.

So, again, what happened next? Well, I won the event by a full point, with 9.5/12.0; and my seven wins included two which are automatic inclusions in my “best career games” folder against, respectively, the late Gordon Evans (who had been 2398 when I had drawn against him a year earlier) and Marcel van Tricht (a World Championship semi-finalist). To this day, I have no idea how I did it, it was like driving from one side of Glasgow to the other and all the traffic lights being green, it just never happens in normal life.

My next goal was the VWC4 Semi-final in which, as luck would have it, I met my good friend Marcel one again who was, understandably, out for revenge and blew me off the board like a third team rabbit. My biggest disappointment, however, was missing a win against the German player,

Bernd Laube (2368); so I ended up with a shockingly bad result: 9th place.



Most disquieting reflection of all,
was it not bad form to think about
good form?

— James M. Barrie —

In WCCC36, trying to justify my Scottish nomination, I worked very hard and, although I finished 6/15, I was one of only four players to go through the tournament unbeaten. On the strength of this, I had another go in WCCC38, which brings me up to date, as this group is still in progress. Of the seven continuing tournament sections in which I am currently involved, I have hit bad form in three of them and good form in four, viz:

WCCC38pr13. Bad form; but it actually started well. The general rule in stronger events is, make sure you draw with Black, then try to win with White. I very quickly secured draws in all six games with Black, the ideal platform for a strong performance. So I then set about trying to win with White, but found genuine winning advantages in only two games, which I indeed won. I was forced to accept draws in two others; so, in the last two games with White, I threw caution to the wind and went on the attack, looking for non-existent breakthroughs. Ouch! I have overplayed my hand and I am paying the price: I am now heading for my first two losses with White in recent years which have arisen from being outplayed in the middle game. I am also heading for a very disappointing 9/13 result.

European Server Championship. Bad form. I cannot buy a win, even with White. I am heading for my first minus score since I started playing on the webserver.

WS/MN/125. Bad form. Again, I cannot buy a win, even with White. I am likely to conclude the event with a 50% score with 12 draws.

VWC5, Semi-final 07. Good form. I finished in third place, with 7.5/12.0. This won't get me into the Final but my score was only one point short of an IM norm.

European Team Championship, Board 4 for Scotland. Good form. This is the first time I have ever played in a category 6 event, I am the lowest-graded player in the field; but I expect to finish in second or third place with 5.0/10.0, again just one point tantalisingly short of an IM norm.

VWC7pr29. Good form. I have just finished second, with 8.0/12.0 and a qualifying place for the Semi-final.

Scottish Webserver Championship. Good form. I didn't even want to play in this event and would have accepted any offers of draws which might have been forthcoming. But now, having found and exploited an unexpected flaw in David Cumming's Modern Defence (David having performed far better than me, overall, in the last 12 months), I have concluded my games with 4.0/6.0 and a guarantee of at least second place.

So I keep plodding on. Am I on good form? Am I on bad form? Well, actually, both. My chess is a perpetual curate's egg. I am at a complete loss, to understand it at all. Does anyone else have the same problem?

[Ed – another Bennett article and some more chess images from Samuel Bak. You can find these images (and many others) on the University of Minnesota website: <http://www.chgs.umn.edu/museum/responses/bak/chess.html>]



Left:
'Cavalcade'
(oil on canvas)



Right:
'The Designated'
(oil on canvas)



Left:
'Royal Couple'
(oil on canvas)



Right:
'Boards Meeting'
(oil on canvas)



Compliments of the season!

Our main feature is a great struggle from the Adrian Hollis Memorial embellished by superb notes from both players.

White: Donnelly, Mike (2468)

Black: Beecham, Richard (2459)

Adrian Hollis Memorial, 2014

Slav Defence [D10]

[Notes by Mike Donnelly & Richard Beecham]

1.d4 d5
2.c4 c6

MJD: I could trace several games in the Databases with Richard playing the Slav but none against the exchange variation.

3.cxd5 cxd5

4.Bf4

MJD: White waits for Nf6 then can proceed with Nc3 and then decide where the Ng1 goes (f3 or e2).: If 4.Nc3 Nc6 5.Bf4 e5!? Sakaev indicates this is unclear.

4... Nc6

5.e3 Nf6

6.Nc3 Bg4

MJD: Undeservedly unpopular - Sakaev 2012—a fair comment with only 134 games in Databases 2004–2014 with White scoring just 47% .

7.f3

MJD: 7.Qb3 is the main alternative.

7... Bd7

8.Bd3 e6

9.g4

MJD: 9.Bg5 h6 10.Bh4 Be7 11.Nge2 Ne4 12.Bxe7 Nxc3 13.Nxc3 Nxe7 14.f4 Morozevich-Svetushkin, PortoCarras 2011.

9...Rc8

MJD: 9...Bb4 10.Nge2 0-0 11.a3² based on Maceija-Shirov, Warsaw 2010.; MJD: 9...Be7 10.Nge2 0-0N Sakaev-"White needs a lot of time to develop his king-side initiative so Black should not be afraid"- 11.Rc1 Rc8 12.h4 Ne8 13.g5 "the position is very complicated and chances are equal". This position is very similar to the main line game which was based, up to move 12, on some analysis of an otb game played by White about 10 years ago in London.

10.Nge2 Be7

10.Nge2 Be7

SCCA Magazine 132

MJD: This seems new here.

CRB: My 10....Be7 may be new, designed to speed up castling and expose white's King along the f-file after his Kf2.

MJD: 10...Na5 has been played in a small number of games previously.

11.h4 0-0

MJD: If now 11...Na5 12.Rc1 Nc4

13.Rc2 and White gets some

attacking chances after 13...Qa5

14.Kf2 0-0 15.Qg1

12.Kf2

MJD: 12.a3 preventing Nb4 could lead to the following quick finish

12...Ne8 13.Kf2 Bxh4+ 14.Kg2 h6

15.Qc2 Be7 16.Bh7+ Kh8 17.Bxh6

gxh6 18.Rxh6 Kg7 19.Rg6+ Kh8

20.Rh6=;

CRB: Not 12.g5 when after 12...Nh5

13.Bh2 f6 14.Ng3 Be8 15.f4 Mike's

position looks like a Swiss cheese.

12... Ne8

MJD: or 12...Nb4 when White can

progress via 13.Bb1 Ne8 14.a3 Nc6

15.g5 (or 15.Qd3)

13.g5 Nb4

MJD: If instead 13...f6 then White

continues with some pressure via

14.Qb1

14.Bb1 Nc6

MJD: Here Richard commented on the similarity of this game and the game Lipnitsky-Smyslov, USSR ch 1950 published (and vaguely recalled) in Soviet School of Chess by Kotov and Yudovitch.

15.a3 f6



CRB: With 15....f6 I felt I had equalised as White's king is rather exposed in the playground.

16.gxf6

MJD: 16.Qd3 f5 is fine for Black

CRB: this line is an interesting try:

17.b4 a6 18.Ba2 b5 19.Rag1 hoping

that I would miss a lovely move and

play 19...Nd6? as 20.Nxd5! exd5

21.Bxd5+ Kh8 22.h5 Nf7 23.Bxf7

Rxf7 24.d5 gives a winning attack.

19...Nc7! solves the problem.

16... Bxf6

MJD: The most solid. Obscure

positions result from:

16...Rxf6 17.Qd3 Rf5 18.h5 Nf6

19.h6 g5 20.Qd2 gxf4 21.Bxf5 fxe3+

22.Qxe3 exf5 23.Qg5+ Kf7

24.Qg7+; and 16...Nxf6 17.h5 Be8

18.Qd3 Bd6 19.Bg5 Ng4+ 20.Ke1

Qxg5 21.Qxh7+ Kf7

17.h5

MJD: Not 17.Qd3 Bxh4+ 18.Kg2 g6

and White has little compensation for

the pawn.

17... Ne7

MJD: 17...Bh4+ 18.Kg2 Na5 19.Qd3

Rf5 20.Ra2!?! a concept played in the

Lipnitsky-Smyslov game and now if

20...Rxh5 21.Ng3±

18.Ng3

MJD: 18.Bd3 reversing the bishop

and queen as in the Turton Doubling

chess problem theme gets nowhere

after 18...Bc6 19.Qc2 h6 20.Rag1

Kh8 21.Rg4 Nd6=; MJD: 18.Bxh7+

is here useless after 18...Kxh7 19.h6

g5+

18... Rf7

MJD: After 18...Qb6 19.Qc2 is

promising eg 19...g6 (19...h6

20.Qh7+ Kf7 21.Nce2 Qxb2

22.Bxh6 e5 (22...Qxa1 23.Bg6+-)

23.Ra2±) 20.hxg6 hxg6 (20...Nxc6

21.Rxh7+-) 21.Qd2 Nd6 22.Ba2 Nc4

23.Bxc4 Rxc4 24.Nge2 Nf5 25.Rag1

when Black's king is a bit exposed.

19.Qd3 g5

MJD: 19...Nf5 allows White to

snatch a pawn via 20.Nxf5 exf5

21.Nxd5 Bh4+ 22.Kg2

20.hxg6 Nxg6

MJD: 20...hxg6 is also playable

although I had a slight preference for

White after 21.Be5 Qb6 22.Qd2 Nd6

23.Bxf6 Rxf6 24.Ba2 Rcf8 25.f4

21.Bh6

MJD: White must preserve the

bishop for attacking purposes on the

black squares. If instead 21.Nge2

Nxf4 a level game results after

22.Nxf4 Nd6 for if 23.Rxh7 Nf5

24.Rxf7 Kxf7 and it's White's king that's exposed after the coming Qh8.; 21.Rxh7 was also considered but thought not enough compensation resulted after 21...Rxh7 22.Qxg6+ Rg7 23.Qh5

21... Bh4
 MJD: 21...e5 results in a wild position after 22.dxe5 (and also after 22.Ba2 Be6 23.Rag1 Bh4) 22...Bxe5 23.Ba2 Nf6 (and 23...Be6 24.Nge2 Bxc3 25.Nxc3 Rxf3+ 26.Ke2°) for if 24.Nxd5 Ng4+ is good for Black.

CRB: My original intention was to play 21...Nd6!/? The main line runs: 22.Qe2 e5 23.dxe5 (23.Nxd5 exd4 24.Nxf6+ Qxf6 25.Nh5 Qe5 26.exd4 Qxd4+ 27.Be3 Qe5 and Black is better.) 23...Bxe5 24.Ba2 Rc5 25.Bxd5 Rxd5 26.Nxd5 Bg4 27.Nf4 Bxf4 28.exf4 Nxf4 29.Bxf4 Rxf4 30.Qc2 Qd7 31.Raf1 Bxf3 32.Kg1 Nb5 33.Qc5 Qg4 34.Rh3 Qxh3 35.Qg5+ with a perpetual. It is so important to follow a logical series of moves to see where it takes you. This time a dead end.....

22.Qe2

MJD: Surprisingly the natural move 22.Ba2 leaves White with no good move after 22...Nd6—

22... Rc6

MJD: A more controlled line since again 22...e5 produces mayhem after 23.dxe5 Nxe5 24.Bf4 Ng6 25.Bxg6 hxg6 26.Qd3; CRB: Another line (including a queen sac) which leads to a perpetual was: 22...Nd6 23.Kg2 e5 24.Bxg6 hxg6 25.dxe5 Nc4 26.Rad1 g5 27.Nxd5 Nxe5 28.Ne4 Bc6 29.Ndf6+ Qxf6! 30.Nxf6+ Rxf6 31.e4 Rxf3 32.Rhf1 Rg3+ 33.Kh1 Rh3+ etc.

23.Bxg6 hxc6

24.Rag1 e5



CRB: At this point in our game I was becoming totally solipsist, the variations were so complex; Mike and I were like two heavy-weight

boxers going toe to toe neither giving an inch. Just look at this possible line: 24...Ng7 25.Qd3 e5 26.Bxg7 Kxg7 27.dxe5 Bg4 28.f4 d4 29.Nce2 Rfc7 30.Rxh4! Qxh4 31.Rh1 dxe3+ 32.Qxe3 Bh3 33.e6 Rxe6 34.Qxe6 Qxg3+ 35.Kxg3 Bxe6 totally unclear and still no K.O.!

25.dxe5 d4

MJD: Wilder and wilder. Instead White is comfortable after 25...Rh7 26.Bf4 g5 (CRB: more end-to-end stuff with 26...Ng7 27.Qd2 Be6 28.Rxh4 Qxh4 29.e4 Nh5 30.Nxd5 Nxf4 31.Nxf4 Rd7 32.Nd5 Bxd5 33.exd5 Rc5 34.Rh1 Qe7 35.Ne4 Rdx5 36.Qh6 and another perpetual check!) 27.Rxh4 Rxh4 (27...gxh4 28.Nf5+-) 28.Nf1 Rh5 29.Nxd5=; and not 25...Bg4 due to 26.Bf4±

26.exd4

MJD: Intuitively relying on the central passed pawns. Much time was spent on 26.Nb5!/? without coming to a sensible overall conclusion - the position just seems totally unclear. Some lines are:

a) 26...dxe3+ 27.Bxe3 Ng7 28.Nd4 Nh5 29.Nxc6 Bxc6 30.Qc4 Bxg3+

b) 26...Rh7 27.Bf4

b1) 27...Bxg3+ 28.Kxg3 Rxh1 29.Rxh1 g5 30.Nxd4 (30.Qd3 gxf4+ 31.exf4 Ng7 32.Nxd4) 30...gxf4+ 31.Kxf4)

b2) dxe3+ 28.Bxe3 Ng7 29.Nd4 Nf5 30.Nxc6 Bxc6 31.Qc4+ Kh8 32.Rxh4 Rxh4 33.Qc5 Rh2+ 34.Rg2 Rxx2+ 35.Kxg2

c) MJD/CRB: 26...d3! 27.Qxd3 Rxf3+! 28.Kxf3 Bg4+ 29.Kxg4 Qxd3 30.Nd4 (30.Rxh4 Qxb5 31.Bf4 Qd3) 30...Bxg3 31.Kxg3 Rc4 32.Rd1 Qe4 and the game too hard to predict.

26... Bg4

MJD: Around here I commented the game was more like a Kings Gambit rather than one derived from the Exchange Slav.

27.Be3

MJD: 27.d5 Bxf3 28.Qxf3 Qb6+ 29.Kg2 Rxf3 30.Kxf3 Bxg3 31.Rxg3 Qxb2 32.dxc6 Qxc3+ 33.Kf2 Qc2+ 34.Kg1 bxc6 is better for Black.

27...Ng7

MJD: Activating the knight is stronger than: 27...Rxf3+ 28.Qxf3 Bxf3 29.Kxf3 Bxg3 30.Kxg3= (30.Rxg3 Rxc3-+); or 27...Rxc3 28.bxc3 Rxf3+ 29.Qxf3 Bxf3 30.Kxf3±; CRB: Playing the straightforward 27...Bxf3 28.Qxf3 Rxf3+ 29.Kxf3 Bxg3 30.Kxg3 Ng7

31.Rh3 Re6 32.Kh2 Nf5 33.Bf2 Qb6 34.b4 Qa6 35.Rg2 Qc4 36.Ne4 Nxd4 37.Nf6+ Rxf6 also leads to yet another unclear position, so I opted to retain the tension with 27...Ng7!/?

28.d5 Rc8

MJD: 28...Rxc3 was also analysed for a long time and seems to lead to an equilibrium situation after 29.bxc3 Nh5 (29...Qxd5 30.Rxh4 Rxf3+ 31.Ke1 Rf1+ 32.Kxf1 Bxe2+ 33.Nxe2+-) 30.d6 when it's not clear how either side can progress. CRB: A draw comes about after 30...Nxg3 31.Rxg3 Bxf3 32.Qxf3 Bxg3+ 33.Kxg3 Rxf3+ etc.

29.d6

MJD: The other pawn advance 29.e6?! is inaccurate due to 29...Rxf3+ 30.Qxf3 Bxf3 31.Kxf3 Rxc3

CRB: Black wins with: 31...Bxg3 32.Kxg3 Qf6 33.Kg2 Nf5 34.Rh3 Nxe3+ 35.Rxe3 Rf8) 32.bxc3 Qxd5+ 33.Ne4 Qf5+ 34.Bf4 Be7 with an edge but not (34...g5 35.Rxh4 gxh4 36.e7 Qh5+ 37.Kf2+-)

29... Nh5



30.d7!

CRB: Mike finds the lovely deflecting move, forcing me waste a tempo and giving White the time to bring another piece to the defence.

MJD: An important gain of tempo. Instead after 30.e6 White's game collapses after 30...Rxf3+ 31.Qxf3 Bxf3 32.Kxf3 (or 32.e7 Qxd6 33.Rxh4 Qf6) 32...Qf6+

30... Bxd7

MJD: Now White obtains a moments respite. Instead if 30...Rc6 then the game remains balanced following 31.Rxh4 Qxh4 32.Nce4 Rxf3+ 33.Qxf3 Rc2+ 34.Bd2 Bxf3 35.Kxf3 (35.Nf6+ Qxf6 36.exf6 Rxd2+ 37.Kxf3 Nxg3 38.Rxg3 is a less secure line.)

31.Nce4

MJD: Fleeing from the the pin leaves Black better or winning: 31.Qc2 Bxg3+ 32.Rxg3 Nxc3 33.Kxg3 Qe7; 31.Qd3 Rxf3+ 32.Kxf3 Bg4+ 33.Kxg4 Qxd3+-

31... Bg4

MJD: 31...Nxc3 is level after

32.Rxg3 Qe7 (32...Bxg3+

33.Kxg3+-) 33.Rxh4 Qxh4 34.Bg5

Qh2+ 35.Rg2 Qh8 36.Nf6+

32.Rxh4

CRB: The only move to salvation is

32.Rxh4 and after some clever

exchanges Mike secures the draw.

This game reminded me of the old saying "Do not go where the path may lead, go instead where there is no path and leave a trail". Mike and I left a trail....

32... Qxh4

MJD: 32...Rxf3+ 33.Qxf3 Bxf3

34.Rxh5 Bxh5 35.Nxh5 Qh4+

36.Nhg3 Rc2+ 37.Kf3 Rxb2

38.Rc1=

33.Bg5

MJD: Not 33.Rh1 Bh3 34.Bg5 Nxc3

35.Bxh4 Nxe2 36.Bf6 (36.Rxh3 Nf4)

36...Nf4 37.Kg3 Nd5+-

33... Qh2+

34.Rg2 Qh3

35.Nf6+ Nxf6

MJD: 35...Kg7 36.Nxc4+-

36.Bxf6

MJD: 36.exf6 was thought better by Richard but not liked by myself due to the less active bishop and doubled pawns after 36...Bf5

36... Bf5

37.Nxf5 Qxf5

38.Qe3

MJD: 38.Rg5 Rc2 39.Rxf5 Rxe2+

40.Kxe2 gxf5 41.Ke3 Kh7 42.Bg5

Kg6 43.e6 Rc7 44.e7 Rc8

38... Rd7

MJD: 38...Rc6 39.Qh6=; MJD:

38...Rc2+ 39.Kg3=

39.Qb3+ Kf8

MJD: 39...Rf7 40.Qd5=

40.Qb4+

MJD: 40.e6 again fails due to

40...Rd2+ 41.Ke3 Rd5 (but not

41...Rxg2 42.e7+ Ke8 43.Qg8+ Kd7

44.Qxc8+ Kxc8 45.e8Q+=) 42.Qb4+

Rcc5 43.Bd4 Ke8 44.Bxc5 Rd3+

45.Kf2 Rxf3+ mates.

40... Kf7

MJD: 40...Ke8 41.Kg3=; MJD:

40...Kg8 41.Kg3=

41.Qb3+

MJD: Here the game was agreed drawn due to the potential repetition. Both players felt the option of Black playing on was no use and may even risk losing. Despite the material

deficiency White obtains a lot of play from the passed pawns. A few lines from a very extensive analysis: 41.Qb3+ Qe6 42.Qxe6+ Kxe6 43.Rxg6

a) 43...Rh7 44.Ke3 Rh2 45.b3 Rc3+

46.Kf4 Rxb3

a1) 47.Bd8+ Kf7 48.Rf6+ Ke8

49.Bc7 Rxa3 50.Bd6 Rd3 (50...Ra4+

51.Kf5 Rh5+ 52.Ke6 Rh8 53.f4 Ra2

54.f5 Ra2 55.Rg6 R8h6 56.Rxh6

Rxh6+ 57.f6 a5 58.Kf5 Rh1 59.e6=)

51.Ke4 Rd1 52.Kf5 Rh8 53.f4 a5

54.Re6+ Kd7 55.Re7+ Kc6 56.Rc7+

Kb6 57.Rc3 Ka6 58.Ke6=

a2) 47.Bg5+ Kd5 48.Rd6+ (48.e6

Rxa3 49.e7 Rh8 50.Rf6 Rc3 51.Kg4

Rc7 52.f4 Rxe7 53.Rf5+ Kd6

54.Bxe7+ Kxe7 is likely drawn.)

48...Kc5 49.Rd7 Re2 50.Be7+=

b) 43...Rd2+ 44.Kg3 Rxb2 45.Bh8+

Kd5 46.Rd6+ Kc5 47.Bf6 Re8

48.Rd7= (48.f4 Rb3+ 49.Kg4 Rxa3

50.Rd7 b5 51.Kf5 a5 52.Be7+=)

c) 43... Rc2+ 44.Ke3 Rxb2 45.f4 Rb1

46.Bh4+ Kd5 47.Kf3 Rf1+ 48.Bf2

b6 (48...b5 49.Ra6 Rh1 50.a4 Rh3+

51.Kg4 Ra3 52.axb5 Rxa6 53.bxa6=)

49.a4 Ra1 (49...Rd8 50.Rg7 Rc8

51.Rd7+ Ke6 52.Rd6+ Kf7 53.Rd2

Rc4 54.a5=) 50.Bh4 Rxa4

(50...Ra3+ 51.Kg4) 51.e6=

1/2-1/2



White: Burrige, Raymond (2033)

Black: Gronroos, Jukka (1809)

EU/PC-OR/019, 2015

Ruy Lopez Chigorin Defence [C99]

[Notes by Raymond Burrige]

1.e4 e5

2.Nf3 Nc6

3.Bb5 a6

4.Ba4 Nf6

5.0-0 Be7

6.Re1 b5

7.Bb3 d6

8.c3 0-0

9.h3 Na5

This the Chigorin Defence - one of four main variants Black has here.

10.Bc2 c5

11.d4 Qc7

Again, one of four choices for Black.

12.Nbd2 cxd4

13.cxd4 Nc6

14.Nb3 a5

15.Be3 a4

16.Nbd2 Nb4

17.Bb1 Bb7

Or 17...Bd7 18.a3 etc.

18.a3 Nc6

19.Ba2 Ba6

20.Nf1 Rac8

21.Ng3 exd4

This, followed by exchange of knights, surrenders control of the centre to especially the d5 and f5 squares.

22.Nxd4 Nxd4

23.Bxd4 Nd7?

This allows the following combination: Other moves aren't much better, for example: 23...Bb7 24.Nf5 Kh8 25.Qd3 Ne8 26.Qxb5 or; 23...Qd7 24.Bxf6 Bxf6 25.e5 Bh4 26.e6 or; 23...g6 24.Qd2 Nd7 25.Nf5 gxf5 26.Qh6 Ne5 27.exf5 Rfe8 28.Re3 and now back to the game.



24.Bxg7! Kxg7

25.Nf5+ Kh8

26.Nxe7 Rcd8

27.Rc1

Obtaining control of the c-file (and later the 7th rank) and after his next move Nd5 attacking his queen which then eyes the holes in Black's kingside.

27... Nc5

28.Nd5 Qa7

29.Nf6 Qe7

30.Nxh7 Ne6

If 30...Kxh7 then 31.Qh5+ followed by Re3-g3.

31.Qh5 Kg8

32.Qh6 f6

33.Rc7!

At last taking control of the magical 7th rank.

33... Rd7

34.Bxe6+ Qxe6

35.Re3 Rff7

36.Rg3+ Rg7

37.Rxg7+ Rxg7

38.Qxg7#

1-0





44th ICCF Congress – Cardiff 2015

By George Pyrich

The 2015 ICCF Congress, hosted by the Welsh Correspondence Chess Federation, was held in the Mercure Holland House Hotel, in the city centre close to many places of local interest including the Millennium Stadium and Cardiff Castle. The Welsh Correspondence Chess Federation, a small organisation but led by a small but very enthusiastic team of volunteers was founded and formally recognised by ICCF in 2012. The history of Correspondence Chess in Wales dates back to the 19th century when a first match between the Clubs of Cardiff and Bristol was recorded in 1860.



ICCF President, Eric Ruch, who acknowledged and thanked the members of the Congress Organising Committee, outlined the many highly significant achievements accomplished during the previous 4 years (part of the business scheduled for the congress was the election of a new Executive Board for a new 4 year term) including the first ever extensive player survey conducted by ICCF (where a large majority expressed satisfaction for all the services provided), the unification of the ICCF website and server and the implementation of a new modern design, the globalisation of the server whereby many languages may be used and games played on many modern devices including tablets and smartphones and the continuing development of the server.

Eric then outlined some of the important matters to be considered by the Congress which included the possible future implementation of specific ICCF laws of correspondence chess designed to increase the leadership of ICCF further over the world of correspondence chess, further modernisation of these rules with refinements of the roles and duties of Tournament Directors and Organizers and the continuation of on-going development of the server with the specific aims of increasing its potential with the aims of making CC more attractive not only for current and potential future players but also potential sponsors. By means of analogy, Eric provided a quotation by Henry Ford, “if we’d asked people what they wanted, they’d have said faster horses”. Thereafter, the ICCF President, calling the Congress to order, then formally opened the Congress.

The congress then noted that, of the total of 86 persons attending the Congress, a total of 47 of ICCF’s 56 member federations were represented, 25 of whom provided delegates and 22 others registering representatives by proxy. Our Scottish delegation comprised George Pyrich, Gordon Anderson and Kevin Paine. The main items considered by the Congress were as follows:

Congress Awards

Following the unanimous adoption of the 2014 Congress Minutes, business began with the presentation of numerous awards which included 4 Bertl von Massow medals (1 Gold and 3 Silver) in recognition and appreciation of length of service (15 and 10 years respectively) by various officials to ICCF and the traditional engraved silver plate to the 26th World Champion, Ron Langeveld (NED), Additionally medals were presented to the winners of the ICCF 16th Olympiad (France), the 15th World Cup Final (Dr. K. Sivic (SLO)), the 2nd Junior World Cup Final (Christoph Tiemann (GER)), the 1st Chess 960 World Cup (Fabian Stanach (POL)) 11th and also the winning teams in ICCF Champions League 5. Finally under this item Congress formally approved Individual Title Awards to those who had met the qualifications criteria, notably 2 GM’s, 14 SIM’s, 43 IM’s, 4 LGM’s and 5 LIM’s (unfortunately there were no awards to any Scots players).



Cardiff Castle

Executive Board Elections

Thereafter Elections were held to the Executive for the next 4 year period to 2019. Rather disappointingly, only 1 of the 7 posts was contested (the incumbent was re-elected).

- Eric Ruch (FRA) - President
- Michael Millstone (USA) - General Secretary
- George Pyrich (SCO) - Finance Director
- Frank Geider (FRA) - World Tournament Director
- Andrew Dearnley (ENG) - Marketing Director
- Austin Lockwood (WLS) - Services Director
- Josef Mrkvička (CZE) - Auditor

ICCF Finance

A deficit of some 37,985 euros was recorded for 2014, significantly more than the budgeted 14,130. There were several significant factors however: the extraordinary costs associated with the previous year's congress in Australia, expenditure of some 14,500 in excess of budget on Development of the ICCF Webserver and a reduction from the previous year in the amount of fees received in respect of tournament entries of some 15,000 following the significant reductions in charges introduced from 1 January 2014. Nevertheless ICCF's Finances remain very healthy with reserves (almost all cash) in excess of 275,000 euros. In view of this situation the congress approved small reductions in charges for selective most popular events (Promotion Tournaments and World Cups) with effect 1 January 2016.



Millenium Stadium Cardiff

ICCF Titles

After some discussion the Congress approved by narrow majority proposal presented by Welsh Federation regarding the introduction of "Non Gender Specific Versions of Ladies Titles" with norms available (subject to qualifications criteria) in ICCF events starting after 1 January 2016. It was agreed that there will be two new titles, "Correspondence Chess Expert" and "Correspondence Chess Master" (or other suitable names to be discussed, for example "Candidate Master"); these titles will not be gender-specific and will have exactly the same performance requirements as the current LIM and LGM titles. These new titles are to be available to all players regardless of gender with the inequality associated with gender specific titles removed and also broadly align ICCF with FIDE in conceptual terms of the FIDE Master and Candidate Master titles. Potentially the achievement of titles will be opened to a wider group of players and any female player earning the CCE or CCM title may opt to have the equivalent LIM or LGM shown on her certificate and medal for the next five years.

Finally the CCE and CCM titles will be awarded automatically by the server when the required norms are achieved, including a downloadable certificate. Medals and certificates signed by the ICCF President and General Secretary for the new titles will only be available for presentation at Congress to players who are able to attend Congress in person, or, are female (this should apply for the next five years).

Under this plan the current LIM and LGM titles will be discontinued to be replaced by a non-gender specific version of ladies titles, specifically two new titles. For the next 5-years, ladies earning qualifications for the new title may elect to receive the equivalent ladies title.

ICCF Webserver

The Services Director reported on the large number of developments and improvements carried out during the last year to the Webserver including the facility that the server now handles flag falls (including forfeits under playing rule 3b) automatically for all ICCF events started after 1.1.2015; additionally certain 'dead' positions now trigger an automatic draw and most deterministic claims (for example threefold repetition, tablebase claims, etc.) are handled automatically without the need for TD intervention. Additionally the requirement for claims to be entered by team captains in team events has been removed from the server with all claims now made by players.

The Congress also considered plans for a large number of further refinements to the server during the coming year, approving a budget of 30,000 euros in respect of these developments.

ICCF Marketing

The Congress noted the numerous developments and future plans presented by the Marketing Director. Firstly he reported that great strides had been made with the partnership with New in Chess who will now offer sponsorship in terms of prizes for some ICCF events and are currently supplying player photograph prizes from their online shop. A first ever commercial mailing was sent during the year on behalf of New in Chess to all ICCF players featuring a NIC yearbook subscription offer. In future two or three mailings will take place every year from NIC with special offers.



George accepts certificates as proxy for Sweden

Plans were outlined to further develop ICCF's relations with ChessBase in the coming year in order to establish a

partnership similar to that presently with NIC. The Congress noted the new sponsorship of the Champions League by Chessdom and also the new tablebase access deal between Convekta and ICCF with regard to Tournament Directors being able to verify tablebase claims. The current arrangement with Your Move to sponsor the ICCF Promotion tournaments will be reviewed during the coming year.

Additionally an ICCF Mail Tool System whereby, amongst other facilities, National Federations could distribute mailings to members had been introduced during the year as well as numerous other new features including the ICCF Player Photographs feature allowing players to post their photographs on the webserver. Finally plans were outlined for a number of new features including an ICCF Hall of Fame and a Player Achievement page.



Delegates at the Conference Banquet

ICCF Rules

Mercifully this item proved rather less contentious than in previous years! Amongst items approved were the reintroduction of conditional moves in webserver games and the introduction of a new Arbiters Manual as well as modifications to the qualifications requirements for ICCF Arbiters.

Several other items including the elimination of the “Free Day Calculation” (introduction of a 24 clock), restrictions upon “Accumulated Time” (time carried forward), “Elimination of Normal Leave Restriction” (permitting unused leave to be carried forward), and “Equitable Normal Leave Allocation” (leave based upon tournament starts dates not calendar years) were referred to a Working Group which will deliver a Report next year!

ICCF Honorary Membership and Lifetime Achievement Awards

The Congress gave approval to a proposal that the current “unwritten rule” that Honorary Membership of the ICCF is awarded to players for 25 years of outstanding service and distinction to the ICCF, or earlier if Congress considers the recipient to be deserving of Honorary Membership be amended that instead formal adoption occurs when these requirements are made.

Similarly the current “unwritten rule” that the Lifetime Achievement Award is awarded to players for 50 years of outstanding service and distinction to ICCF also be amended so that formal adoption of the award be for 35 years of exceptional service and distinction to the ICCF, or earlier if Congress considers the recipient to be deserving of this award.

Future Congresses

The congress confirmed the time-table for the 2016 Congress in Bremen, Germany (14 to 20 August).

Congress Activities

During the week there was the usual programme of chess activities – an ICCF team was able to win a friendly match against a Welsh Chess Union team in the traditional match against local Congress hosts, winning 8½-6½, and a field of 22 participated the customary Blitz Tournament won jointly by Dmitrijus Chocenska (LTU) ahead of Walter Braun (AUT) and Nikolay Poleschuk (RUS).



George draws against David James in the ICCF-WCU match

The customary Congress Excursion visited the Blaenavon World Heritage Centre and Ironworks, Big Pit National Coal Museum (where more adventurous delegates were able to go underground) and the Rhymyne Brewery Visitor Centre.



Blaenavon

All in all, this was a truly memorable Congress held in a beautiful modern yet historic city with excellent facilities provided by gracious and generous hosts.



10th European Team Championship

EU/TC10/sf2, 10th European Team Championship - Semifinal 2

TD Glaser, Karel (IA)

			1	2	3	4	5	6	7	8	9	10	11	Score	%	+/-	Team results	FG	RG	Place	
1		Estonia	2427	█	4.5	4	5	4.5	4	5	5.5	4	4.5	3	44	57	11	15	77	3	1
2		Romania	2455	3.5	█	3.5	4.5	4	4	4.5	4.5	5	5.5	4	43	55	9	13	77	3	2
3		Ukraine	2415	4	4.5	█	3	4	3	4.5	4.5	5	4.5	5	42	56	9	14	75	5	3
4		Portugal	2372	3	2.5	4	█	4	5.5	4	5	4	4	5	41	53	6	11	76	4	4
5		Bulgaria	2420	3.5	4	4	4	█	4	4	3.5	5	3.5	5	40.5	50	1	9	80	0	5
6		Netherlands	2389	4	4	3	2.5	4	█	4	3.5	4.5	4.5	4.5	38.5	50	0	10	77	3	6
7		Denmark	2340	3	3.5	3.5	3	4	4	█	3.5	3.5	5.5	4	37.5	48	-3	5	78	2	7
8		Lithuania	2361	2.5	2.5	3.5	3	4.5	3.5	4.5	█	4	5.5	2.5	36	47	-3	7	75	5	8
9		Turkey	2383	4	3	2	3	3	3.5	4.5	3	█	4	3.5	33.5	44	-8	4	75	5	9
10		Belgium	2360	2.5	2.5	3.5	4	4.5	3.5	2.5	2.5	3	█	4.5	33	42	-12	5	78	2	10
11		Scotland	2327	3	3	2	3	3	3.5	3	3.5	3.5	3.5	█	31	43	-10	0	72	8	11

Disappointingly the team remains in bottom place following a few more losses. Although the team still has 8 games to finish any hopes of qualification expired some ago.

Current Friendly Internationals

GB/TriNat/2015, British Tri-Nations 2015

TD Ylönen, Olli

				1	2	3	Score	%	+/-	Team results	FG	RG	Place
1		Wales	2015	█	6.5	8	14.5	55	3	0	26	14	1
2		England	2145	6.5	█	7.5	14	58	4	0	24	16	2
3		Scotland	2018	5	3.5	█	8.5	35	-7	0	24	16	3

With 60% games completed our team presently has 8½ points and languishes in 3rd spot. As in the first such event, our Welsh friends hold a narrow lead over England.

Start	Boards	Opponents	Mode	For	Against	Void	Result
Oct 2015	25	Australia		2½	3½		
May 2015	25	Netherlands	Server	9	15		
Apr 2015	9	Natcor	Server	7½	7½		
Jan 2015	20	Wales	Server	18½r	18½		
Dec 2014	27	Iceland	Server	14½	36½		loss
Nov 2014	25	Switzerland	Server	11½	36½		loss
May 2014	25	Venezuela	Server	18	32		loss
Mar 2014	23	France	Server	10	36		loss

A return match over 25 boards against Australia has now started and we plan to start another new match against USA early in the new year. Our numerous current matches continue as before.

6th ICCF Champions League

Play is now well underway in these new events with both our teams playing solidly. In Group 17 the Lewis Chessmen stand second on 48% with 1 game unfinished, but could still be caught by chasing teams. The Scottish Claymores in Group 19 sit fourth with 3 games to finish but still have an outside chance of improving their position.

CL/2015/PL17, Promotional League 2015 Gr17

		TD Jansen, Joop (IA)					Score	%	+/-	Team results	FG	RG	Place
		1	2	3	4	5							
1	The Black Knights	2209	5.5	4.5	5	3.5	18.5	66	9	6	28	4	1
2	Lewis Chessmen	2320	2.5	3.5	4.5	4.5	15	48	-1	4	31	1	2
3	64for4	2302	1.5	4.5	2.5	3	11.5	47	-1	2	24	8	3
4	LOS IMPERTERRITOS	2148	3	3.5	1.5	3.5	11.5	42	-4	0	27	5	4
5	Rochade 5171 Chessfriends	2134	2.5	2.5	3	3.5	11.5	44	-3	0	26	6	5

CL/2015/PL19, Promotional League 2015 Gr19

		TD Martín Sánchez, Carlos					Score	%	+/-	Team results	FG	RG	Place
		1	2	3	4	5							
1	WE BREAK FOR GAMBITS!	2314	4	4	5	7.5	20.5	68	11	6	30	2	1
2	Volga - Moscow	2285	3	3	4.5	5.5	16	59	5	4	27	5	2
3	Memento Gambit	2192	3	3	3.5	6	15.5	59	5	2	26	6	3
4	Scottish Claymores	2211	3	3.5	3.5	5	15	51	1	2	29	3	4
5	CCI II	2069	0.5	0.5	0	1	2	7	-22	0	26	6	5

Adrian Hollis Memorial

MT-Hollis, Adrian Hollis Memorial

						TD Limbert, Neil (IA)											Score	Wins	SB	RG	Place
						1	2	3	4	5	6	7	8	9	10	11					
1	ENG	211305	GM	Robson, Nigel	2602	½	½	½	1	1	½	1	1	1	1	½	8	6	36.5	0	1
2	SCO	620184	SIM	Beecham, C. Richard	2459	½	½	½	½	1	0	½	½	½	1	5.5	2	25.75	0	2	
3	ENG	210773	GM	Hall, Richard V. M.	2640	½	½	½	1	0	½	½	½	½	1	5.5	2	25.75	0	2	
4	ENG	211500	SIM	Burne, Nigel G.	2489	0	½	½	½	½	½	½	1	.	1	5	2	22.25	1	4	
5	ENG	211655	SIM	Williamson, Harvey D.	2508	0	½	0	½	½	½	½	1	1	½	5	2	21.5	0	5	
6	ENG	211431	GM	Pugh, John	2472	½	0	1	½	½	½	½	½	½	½	5	1	24.5	0	6	
7	ENG	210300	SIM	Pegg, Russell M.	2471	0	1	½	½	½	½	½	½	½	½	5	1	23.25	0	7	
8	ENG	210405	SIM	Donnelly, Dr. Mike J.	2468	0	½	½	½	½	½	½	½	½	½	4.5	0	20.75	0	8	
9	ENG	210701	SIM	Rhodes, John D.	2413	0	½	½	0	0	½	½	½	½	1	4	1	17.5	0	9	
10	ENG	210425	GM	Brookes, John G.	2511	0	½	½	.	0	½	½	½	½	½	3.5	0	16.25	1	10	
11	ENG	210217	SIM	Timson, Paul F.	2506	½	0	0	0	½	½	½	½	0	½	3	0	15.5	0	11	

SIM Richard Beecham shares second spot with GM Richard Hall with only one result remaining.

Bell, Alan D (2406)

Hebels, Albert (2421)

CL/2015/PL17, 2015

Sicilian, 3.Bb5 [B31]

[Notes by George Pyrich]

Alan Bell had a seemingly effortless win against a strong Belgian opponent.

1.e4 **c5**

2.Nf3 **Nc6**

3.Bb5 **g6**

4.Bxc6 **bxc6**

4...dxc6 is the other and better option.

5.0-0 **Bg7**

6.Re1 **d6**

Another set up is 6...Nh6 as in Kristol - Baumbach, 11th World Ch.

Final 1994, going: 7.c3 0-0 8.d4 cxd4 9.cxd4 d6 10.Nc3 f6=

7.e5 **d5**

7...Bg4 8.h3 Bxf3 9.Qxf3 Bxe5

10.Qxc6+ Kf8 is maybe ok for

Black.

8.h3 **Nh6**

9.Nc3 **f6**

10.exf6 **Bxf6**

11.Na4 **Nf5**

12.Nxc5 **Qd6**

13.Nd3



With a safe extra pawn.

13... **0-0**

14.Nde5 **c5**

15.d3 **Nd4**

16.c3 Nxf3+
 17.Nxf3 Bf5
 18.Bh6 Rfc8
 19.Qd2 e5
 20.Re2

White simply builds up his position whilst Black's bishop pair can do nothing.

20... c4
 21.dxc4 Rxc4
 22.Rd1 Rd8
 23.Bg5 Re4
 24.Bxf6 Qxf6
 25.Re3 Rxe3
 26.Qxe3 Bc2
 27.Re1 e4
 28.Nd4 Ba4



29.b3
 And the rest is easy for White.

29... Bd7
 30.Rd1 Rf8
 31.Nc2 Be6
 32.Nb4 Qf7
 33.Qd4 a5
 34.Nxd5 e3
 35.fxe3 Bxh3
 36.Rd2 Be6
 37.Nf4 Bf5
 38.Rf2 Bc8
 39.Nd3

1-0



Campbell, Eoin S (2193)

Hoch, Dieter (2157)

CL/2015/PL19, 2015

Benko Gambit [A58]

[Notes by George Pyrich]

Eoin Campbell won smoothly with this effort.

1.d4 Nf6
 2.c4 c5
 3.d5 b5
 4.cxb5 a6
 5.bxa6 e6!?

Perhaps surprisingly Black scores reasonably well with this in the ICCF Server database. Either 5...g6; or 5...Bxa6 are instead almost invariably played.

6.Nc3 exd5
 7.Nxd5 Nxa6
 8.Bg5

Instead 8.e4 Bb7 9.Bc4 Nb4 10.Nxb4 Qa5 and Black drew without too much difficulty in Borisovs - Hauser, MN/112.

8... Be7
 9.Nxe7 Qxe7
 10.Nf3 0-0
 10...h6 11.Bh4 0-0 12.e3 d5 comes to much the same thing.
 11.e3 Rd8
 12.Be2 h6
 13.Bh4 d5
 14.0-0 g5
 15.Bg3 Ne4



16.a3
 16.Nd2 looks normal 16...Nxc3 17.hxg3 Bf5 when Black seems fine. White has seen a little deeper.

16... h5?!
 Playing into White's hands. 16...Bf5 17.Rc1 Nc7 was better.
 17.h3!?

This may look dubious but White will get the half open f-file.

17... Nxc3
 18.fxc3 g4
 Maybe 18...Bf5 hoping to play Be4.

19.Nh4 Nc7
 19...Qxe3+ 20.Kh2 Rb8 21.Qc2 Qe5 22.Nf5 and White is very clearly better.

20.Kh2 Re8
 21.Bd3! Qd6
 22.Qc2
 Ignoring the pawn at e3 - Black's king side weaknesses won't go away.

22... gxh3
 23.gxh3 Rxc3
 24.Qf2 Qe6
 25.Ng2 Re5
 26.Nf4 Qd7



27.Rae1! Rxe1
 28.Rxe1 c4
 29.Bc2 d4
 30.Re5 Qd8
 31.h4 f6
 32.Nxh5 Ra6
 32...fxe5 loses immediately to 33.Bh7+!! Kxh7 34.Qf7+
 33.Rc5 Rd6
 34.Ba4 Qe7
 35.Rxc4 d3



36.Rxc7!
 A final flourish to finish it off.

36... Qxc7
 37.Bb3+ Kf8
 38.Nxf6 Qb7
 39.Bd5 Qf7
 What?!
 40.Nh7+
 1-0



Carlsen, Torben IM (2022)

Borwell, Alan IM (2250)

VWC7 - PG33, 2014

Queen's Indian [E17]

[Notes by Alan Borwell]

My IM opponent in this game sent me many messages and amusing stories and it was a pleasure to play him. Although I scored 4 wins and

no losses in the group, it was not quite enough to gain a place in the Semis!

- | | |
|---------|------|
| 1.e4 | c5 |
| 2.c3 | Nf6 |
| 3.e5 | Nd5 |
| 4.d4 | cxd4 |
| 5.Nf3 | Nc6 |
| 6.Bc4 | Nb6 |
| 7.Bb3 | g6 |
| 8.cxd4 | Bg7 |
| 9.d5 | Nxe5 |
| 10.Nxe5 | Bxe5 |
| 11.Bh6 | Bxb2 |
| 12.Nd2 | d6 |

Tempting to take rook but White's 2 bishops and queen and easier development would compensate.

Two pawn advantage is good return from opening!

- | | |
|--------|-----|
| 13.Rb1 | Be5 |
| 14.f4 | Bc3 |
| 15.Rc1 | Bb2 |
| 16.Rc2 | Ba3 |
| 17.Ne4 | Bf5 |
| 18.Qd4 | |

Now Black has interesting choice of 3 possible moves ie Bxe4, Rg8 or f6

- | | |
|---------------------------|---------------|
| 18... | Bxe4 |
| 19.Qxe4 | |
| 19.Qxh8+ Kd7 | 20.Qxd8+ Rxd8 |
| 21.Re2 Bb4+ | 22.Kf2 Bd3 |
| 23.Rc1 Bxe2 | 24.Kxe2 Ba3 |
| and Black is much better. | |
| 19... | Bc5 |
| 20.Ke2 | Qd7 |
| 21.Kf3 | 0-0-0 |
| 22.Rb1 | Kb8 |
| 23.a4 | f5 |
| 24.Qe1 | Nxa4 |
| 25.Qa5 | Nb6 |
| 26.Ra1 | Nc8 |
| 27.Kg3 | |



Black has several candidate moves eg a6, Qc7, Rhg8, Qe8, Bb6 etc.

- | | |
|--------|-----|
| 27... | a6 |
| 28.Bc4 | Qc7 |
| 29.Qa2 | Nb6 |

- | | |
|---------|------|
| 30.Bd3 | Rd7 |
| 31.Rb1 | Rc8 |
| 32.h3 | Qd8 |
| 33.Rcb2 | Qh8 |
| 34.Rxb6 | Bxb6 |
| 35.Rxb6 | Rc3 |
| 36.Rb3 | |

Now a5, Rdc7, Rxb3, Qd4 or even b5 or Ka7 appear to be advantageous, but which is best !?

- | | |
|---------|------|
| 36... | Rdc7 |
| 37.Kh2 | Rxb3 |
| 38.Qxb3 | Rc3 |
| 39.Qb1 | Ra3 |
| 40.Be2 | Qd4 |
| 41.Bg5 | |

- | | | | | |
|--------------|--------------|--------------|-------------|--------------|
| 41.Bf3 Rxf3 | 42.gxf3 Qf2+ | 43.Kh1 Qxf3+ | 44.Kh2 Qf2+ | 45.Kh1 Qh4 |
| 46.Bg7 Qxh3+ | 47.Kg1 Qg3+ | 48.Kh1 Qxf4 | 49.Qe1 Qe4+ | 50.Qxe4 fxe4 |
| 51.Bf8 Kc7 | 52.Bxe7 a5 | 53.Bg5 a4 | 54.Bc1 b5 | 55.Kg2 b4 |
| 56.Kf1 Kb6 | 57.Ke2 Kc5 | 58.Kd2 h5 | 59.Bb2 Kxd5 | |

- | | |
|--------|------|
| 41... | Ra1 |
| 42.Qc2 | a5 |
| 43.Qd3 | Qxd3 |

After the Q exchange, the Black R and two connected passed pawns are better than unco-ordinated bishops.

- | | |
|---------|------|
| 44.Bxd3 | a4 |
| 45.Bxe7 | Kc7 |
| 46.Bf6 | Ra2 |
| 47.Bc4 | Rc2 |
| 48.Bd3 | Rc5 |
| 49.g4 | Rxd5 |
| 50.Bc4 | Rd2+ |
| 51.Kg3 | d5 |
| 52.Bc3 | Rc2 |
| 53.Be5+ | Kc6 |
| 54.Bf1 | Rc1 |
| 55.Bd3 | a3 |
| 56.Kf2 | |

- | | | | |
|---------|------|------------|------------|
| 56.gxf5 | gxf5 | 57.Bxf5 a2 | 58.Kf2 Kc5 |
| 59.Bd3 | d4 | wins. | |

- | | |
|-------|----|
| 56... | a2 |
|-------|----|



- | | |
|---------|------|
| 57.gxf5 | gxf5 |
| 58.Ke3 | Re1+ |
| 59.Be2 | a1Q |
| 60.Bxa1 | Rxa1 |

- | | |
|--------|------|
| 61.Bh5 | Kc5 |
| 62.Bf7 | Ra3+ |
| 63.Kd2 | Rxh3 |
| 64.Be6 | Kc4 |



Black has to decide which of his 3 passed pawns should be pushed - rook could always be exchanged with bishop.

- | | | |
|--------------|--------------|------------|
| 64...h5 | 65.Bxf5 Ra3 | 66.Ke1 h4 |
| 67.Kf1 h3 | 68.Kf2 b5 | 69.Bg4 b4; |
| 64...Rf3 | 65.Bxf5 h5 | 66.Bg6 h4 |
| 67.f5 h3 | 68.Ke2 Rg3 | 69.Bh5 h2 |
| 70.Bf3 Rxf3 | 71.Kxf3 h1Q+ | 64...Kd4 |
| 65.Bxf5 Rh2+ | 66.Kc1 Kc3 | 67.Kd1 |
| d4 | 68.Bg4 d3 | 69.Ke1 d2+ |
| 70.Kf1 Kc2 | 71.Bf3 Kd3 | 72.f5 Ke3 |
| 73.Bg4 Rf2+ | 74.Kg1 Rf3 | |
| 65.Ke2 | Rh5 | |
| 66.Kd1 | b5 | |
| 67.Bd7 | b4 | |

0-1



Borwell, Alan IM (2279)
Lanz Calavia, Jose IM (2042)
Champions League 2015 PL17
Sicilian Dragon [B78]
[Notes by Alan Borwell]

The Champions League arrangements were changed for this new cycle with different time limit, no leave allowed and changed promotion arrangements. Having played (and lost) one game after trying a silly opening, this result just gave me a "plus score" for The Lewis Chessmen team.

- | | |
|--------|------|
| 1.e4 | c5 |
| 2.Nf3 | d6 |
| 3.d4 | cxd4 |
| 4.Nxd4 | Nf6 |
| 5.Nc3 | g6 |
| 6.Be3 | Bg7 |
| 7.f3 | 0-0 |
| 8.Qd2 | Nc6 |

9.Bc4 Bd7
 10.0-0-0 Rc8
 11.Bb3 Ne5
 12.Kb1 a6
 13.h4 h5
 14.g4 hxg4
 15.h5 Nxh5
 16.Rdg1 Qa5
 17.Bh6

All of this has been played before but it has been generally better for White - David Kilgour has had two losses with Black in this variation.

17... Bf6



18.fxg4 Bxg4
 19.Bf4 Nxf4
 20.Qxf4 Rxc3
 The only real try for Black.
 21.bxc3 Qxc3
 22.Qh6 Re8
 23.Rxg4 e6
 24.Rf4 Nc4
 25.Bxc4 Qxd4
 26.Rxf6! Qxf6
 27.a3 Qg7
 28.Qh4 Qe5
 29.Bd3 Kf8
 30.Qf2 Rd8
 31.Qb6 Rd7
 32.Qa7 d5
 33.Qc5+ Qd6
 34.Qd4 e5
 35.Qf2 Ke7
 36.exd5 Qxd5
 37.Qh4+ Kd6
 38.Bc4 Qf3
 39.Qh8 Kc6
 40.Ka2 Qc3
 41.Bb3 Kb6
 42.Qf6+ Qc6
 42...Ka7 43.Qf2+ Qd4 44.Qxd4+
 exd4 maybe offers Black more hope of eliminating the White pawns and securing the draw.
 43.Rf1 Qxf6
 44.Rxf6+ Kc5
 45.Bxf7 g5
 46.c3 g4
 47.Rf5 Kd6

48.Bg6 Re7
 49.Rg5 e4
 50.Rxg4 e3



51.Rg1 Rg7
 51... Ke5 looks the better positional try.
 52.Rd1+ Kc5
 53.Bd3 Rd7
 54.Kb3 Rf7
 55.Rh1 Rd7
 56.Rh5+ Kb6
 57.Kc4 Rg7
 58.Re5 Rg4+
 59.Kb3 Rg3
 60.c4 Rh3
 61.Kc3 Kc6
 62.Kd4

1-0



White: Stewart, Dr. Ken (2095)
 Black: Bevan, Peter (2040)
 SCO-WLS 2015
 Nimzo-Indian Rubinstein [E49]
[Notes by Iain Mackintosh]

Ken Stewart has been representing Scotland in friendly internationals since the inception of the SCCA. Here is a game from the recent match against Wales.

1.d4 e6
 2.c4 Nf6
 3.Nc3 Bb4
 4.f3
 A lesser-trodden path, but with a decent score for White.
 4... d5
 5.a3 Bxc3+
 6.bxc3 c5
 7.cxd5 exd5
 7...Nxd5 is more common.
 8.e3 0-0
 9.Bd3 Re8
 10.Ne2 b6
 11.0-0 Ba6

12.Ng3 Bxd3
 13.Qxd3 Nc6
 14.Bb2 a6N
 It looks pretty level after the opening exchanges.
 15.e4 Na5
 16.Rae1 b5



17.e5!
 White begins his attack, based on a pawn wedge and active piece play.
 17... Nd7
 18.f4 Qb6
 19.Bc1 Nc4
 20.Kh1 f6
 21.Qf3 cxd4
 22.cxd4
 22.Qxd5+ Qe6 23.Qxe6+ Rxe6
 24.cxd4 is also strong for White.
 22... Qb7
 23.Qg4 Kh8
 24.e6 Ndb6
 25.f5 Rac8
 26.Rf4 Re7
 27.Kg1
 Safety first. 27.Ref1! intending Qh3 and Rh4 looks more forcing.
 27... Nd7
 28.Rd1 Nf8
 29.Nh5 a5
 30.Rf3 b4
 Black tries to muster some counterplay...
 31.axb4 axb4
 32.Rb3 Rec7



33.Bf4+-
 ...but it's easily nullified by White who sets up a winning position.
 An interesting alternative was 33.Bh6! gxf6 34.Rg3 Nxe6 (forced) 35.fxe6 Nd6 36.Nxf6+-
33... Re7
34.Rdb1 Qa7
35.Qd1 Rb7
36.Rxb4 Rxb4
37.Rxb4 g5
 One last shot by Black.
38.Bc1 Nd6
39.Bb2 Nxf5
40.Qf3 Ng7
41.Nxf6 Rd8
42.Nxd5 Nfxe6
43.Ne3 h5
44.Qb7 Rd7
45.Qxa7 Rxa7
46.d5 Nf4
47.Nf5 Kh7



48.Rxf4! Kg6
49.Nxg7 gxf4
50.d6

A nice finish by White, who played very well throughout.

1-0



White: Lloyd, Geoff (2259)
Black: Haraldsson jun., Haraldur (2381)
 ISL-SCO 2014
 King's Indian Classical [E98]
 [Notes by Iain Mackintosh]

1.d4 Nf6
2.c4 g6
3.Nc3 Bg7
4.e4 d6
5.Nf3 0-0
6.Be2 e5
7.0-0 Nc6
8.d5 Ne7
9.Ne1 Ne8
10.Be3 f5

11.f3 c5
12.Nd3 Nf6
13.b4 b6
14.a4 Rb8N
15.a5±

White emerges after the book moves with a decent positional plus.

15... fxe4
16.fxe4 cxb4!?

Black takes the initiative, aiming to create pawn runners on the a- and b-files.

17.Nxb4 bxa5
18.Nd3 Rb4
19.Nxb4 axb4
20.Nb5 Nxe4



20...a6 traps the White knight, but after 21.Nxd6 Qxd6 22.c5! White's pawns are very strong.

21.Rxf8+ Bxf8
22.Qb1

22.Bxa7 is also good for White after 22...Nf5 23.Bd3 Nc5 24.Bxf5 Bxf5 25.Bxc5 dxc5

22... Nc3
23.Nxc3 bxc3
24.g4! a6

25.Qd3 h5
 White is turning the screw, and the Black pieces lack freedom of movement.

26.h3 hxg4
27.hxg4 Kg7
28.Qxc3 Ng8
29.Kg2 Be7
30.Rh1 Nf6?!

30...Bh4 seems preferable.

31.Bg5 Nh7
32.Bh6+ Kh8



33.c5!

The final push from White.

33... dxc5
34.Qxe5+ Bf6
35.Qe4 Bb7
36.Bf3 Qd7
37.Rb1 Bg7
38.Bxg7+ Kxg7
39.Qe5+

39.Qe5+ Kg8 40.Rxb7 Qxb7 41.d6 and the roof has fallen in]

1-0



Pine Marten in Heather by Peter Cairns of northshots.com

Season's Greetings from SCCA to chessplayers everywhere!



General Information

ICCF is the International Correspondence Chess Federation. ICCF was founded in 1951 as a reincarnation of the ICCA (International Correspondence Chess Association), itself founded in 1945 as successor to the IFSB (Internationaler Fernschachbund), founded in 1928.

ICCF organises a huge variety of tournaments for individual and team play; operates a worldwide rating system and awards GM, SIM and IM titles to male and female players to recognise strength and performance. Most play is based now on the ICCF webserver, with a residue of postal and email events. Principal tournaments are:

World Individual (www.iccf-webchess.com)

- World Championship. Annual cycles progress through preliminary, semi-final, candidate and final stages.
- World Cups. These include Adult, Junior and the highly popular Veterans events.
- Norm Tournaments. For aspiring IM, SIM and GM players, categorised by rating strength.
- Promotion Tournaments. For middle-strong players, spanning Open, Higher and Master classes.
- Aspirer Tournaments. For beginners and lower-graded players.
- Thematic Tournaments. Organised by opening variations (see opposite).

World Team (www.iccf-webchess.com)

- Olympiads. National team event, 6-player teams, played to a very high standard.
- Champions League. National, cross-national and scratch 4-player teams, several divisions.

European Zone (www.iccf-europa.com)

- European Individual Championship.
- European National Team Championship.

Other

- Friendly Internationals. ICCF member organisations play team events, usually 2 games per player.
- Invitation/Memorial Events. To commemorate anniversaries and deceased officials and players.
- Chess 960. New events featuring Fischer/Random chess opening positions.

SCCA members are eligible to enter all ICCF events, though Scottish nationality is required for national representation.

Current tournament fees are shown on the Fees page of the SCCA website, and all Scottish players competing in ICCF events have bookmarks from the SCCA site to the relevant ICCF cross-table for easy checking of results.

Thematic Tournaments

Postal Events 2016

Theme 1/16: Budapest Gambit, A51

1.d4 Nf6 2.c4 e5

Entries by 15 January; play starts 2 February

Theme 2/16 - Queen's Indian, E18

1.d4 Nf6 2.c4 e6 3.Nf3 b6 4.g3 Bb7 5.Bg2 Be7 6.O-O O-O 7.Nc3 Ne4

Entries by 15 April; play starts 1 May

Webserver Events 2016

Theme 2/16 - Scottish, C45

1.e4 e5 2.Nf3 Nc6 3.d4 exd4 4.Nxd4 Bc5 5.Nxc6 Qf6

Entries by 15 February; play starts 1 March

Theme 3/16 - King's Indian, Fianchetto Var., E61

1.d4 Nf6 2.c4 g6 3.g3 Bg7 4.Bg2 d6 5.Nf3 O-O 6.O-O

Entries by 1 April; play starts 15 April

Note there are no Email Events in 2016.

News

- ❑ The ICCF webserver was updated on 14th December, with the main changes being the new TD Manual; changes to draw offer etiquette; title norms and awards now reflect agreements reached at the Cardiff Congress; online voting in advance of the Bremen Congress.
- ❑ ICCF and ChessBase have signed a partnership agreement which will result in CC articles appearing on the ChessBase News page, and CB sponsorship of one or more major Open tournaments, e.g. World Cup.
- ❑ Congratulations to GM Ljubičić, Ing. Leonardo (CRO) who has become the 28th ICCF World Champion. He has scored 10 points from 16 games and cannot be overtaken.
- ❑ Marco Caressa (ITA) has been re-elected as Director for Zone 1 (Europe).
- ❑ ICCF Congress minutes have still to be published. We'll summarise the main points when available.

Further details of all ICCF activities and events; entries to events, and orders for ICCF publications may be obtained via George Pyrich at: international@scottishcca.co.uk

The SCCA Magazine is sponsored by Mackintosh Independent.